

**Proposed Go-Kart Complex Design for Agodi Gardens, Ibadan, Oyo State, Nigeria
(Site Planning Criteria for Go-Kart complex Design)**

Daniel Oluwatimilehin OGUNSEEMI

LCU/PG/005097

**Being an MSc Thesis Submitted to the Department of Architecture, Faculty of Environmental
Design and Management, Lead City University, Ibadan, Oyo State, Nigeria**

In Partial Fulfilment of the Requirements for the Award of Master Degree (MSc) in Architecture

Certification

This is to certify that Daniel Oluwatimilehin OGUNSEEMI with matriculation number LCU/PG/005097 carried out this research work titled “Site Planning criteria in Go-Kart Complex Design” in the Department of Architecture, Faculty of Environmental Design and Management, Lead City University, Ibadan, Oyo state, for the award of Master Degree (MSc) in Architecture and that this has not been previously submitted.

.....

Arc. Olaniyan Martins
(Supervisor)

.....

Date

.....

Dr. (Arc.) Oludare Obaleye
(Head of Department)

.....

Date

Dedication

This research is dedicated to God for his grace and guidance.

Lead City University Ibadan DO NOT COPY

Acknowledgement

I would like to express my heartfelt gratitude to the management of Lead City University (LCU) and the Postgraduate Graduate College for providing me with invaluable opportunities and for creating a beneficial supportive academic environment that has greatly contributed to my growth and success.

I extend my warm appreciation to the academic staffs of the Department of Architecture, most especially, my project supervisor, Arc. Olaniyan Martins. His steadfast guidance, constructive feedback, and invaluable mentorship have been pivotal in shaping this thesis. I am equally appreciative of Dr. (Arc.) Adedire Funmilayo for her invaluable guidance and assistance. To the Head of Department, Dr. (Arc.) Obaleye Oludare and the esteemed lecturers of the Department of Architecture who have taught me throughout this program and has been of tremendous help, your leadership, wisdom and dedication have profoundly enriched my academic pursuits beyond measure, and for that, I am truly grateful.

I am deeply indebted to my parents, Mr. and Mrs. Ogunseemi, and my siblings, whose solid and constant support in all aspects of my life has been the cornerstone of this achievement. Lastly, but certainly not least, I extend my sincere gratitude to my friends and colleagues, particularly the *Serious Guys Group*, whose encouragement and amity have been instrumental in this journey.

Above all, with profound gratitude and humility, I offer my heartfelt thanks to the Almighty. His infinite mercy, boundless grace, constant provision, unwavering favor and protection have illuminated my path throughout this academic journey. I am deeply grateful for the gift of life, which has allowed me to reach this milestone with a sense of grace and fulfillment.

Even though the above-mentioned institutions and persons have assisted in the process of this research work, I alone stand responsible for the errors, if any, found in the work.

Abstract

The design of go-kart complexes requires careful site planning to ensure optimal performance, safety, and user enjoyment. This thesis investigates the essential criteria for effective site planning in go-kart complex design, drawing on a thorough review of relevant literature, industry standards, and case studies. Key elements examined include site selection, track configuration, safety protocols, and ancillary infrastructure. The research underscores the importance of environmental considerations, accessibility, and adherence to zoning regulations in the planning process. Additionally, the integration of technological innovations is explored to enhance design and operational efficiency. This study aims to establish a comprehensive framework to guide architects, engineers, and developers in creating sustainable, safe, and engaging go-kart facilities. The findings provide critical insights into balancing technical requirements with user experience, contributing to the advancement of recreational motorsport infrastructure.

Keywords: Environmental Considerations, Go-kart Complex, Safety Features, Site Planning & Track Layout.

Word count: 131 words.

Table of Contents

Content	Page
Certification	ii
Dedication	iii
Acknowledgement	iv
Abstract	v
Table of Contents	vi
List of Table	xiv
List of Figures	xv
List of Plates	xvii
Chapter One: Introduction	
1.1 Background to Study	1
1.2 Problem Statement	2
1.3 Research Aim and Objectives	2
1.4 Research Questions	3
1.5 Significance of Study	3
1.6 Scope of Study	3
1.7 Limitations of the Study	4
1.8 Operational Definition of Terms	4

Chapter Two: Literature Review

2.1	Conceptual Review	6
2.1.1	Site Planning	6
2.1.1.1	Brief History of Site Planning	6
2.1.1.2	Principles of Site Planning	7
2.1.1.3	Criteria of Site Planning	8
2.1.2	Site Planning in Recreational Facilities	9
2.1.3	Go-Kart Complex	9
2.1.3.1	Brief History and Evolution	10
2.1.3.2	Types of Go-Kart Complexes	11
2.1.3.3	Categories of Go-Kart Complexes	12
2.2	Key Design Considerations	13
2.2.1	Safety Measures	13
2.2.1.1	Emergency Access	13
2.2.1.2	Lighting	14
2.2.1.3	Fencing and Barriers	14
2.2.1.4	Fire Safety Measures	15
2.2.1.5	Surveillance Systems	15
2.2.2	Track Layout and Dimensions	16
2.2.3	Spectator Areas	17
2.2.3.1	Viewing Stands and Seating	17
2.2.3.2	Amenities for Spectators	18

2.2.4	Environmental Factors	18
2.2.4.1	Noise Control and Pollution	19
2.2.4.2	Air Quality	19
2.2.4.3	Water Management	20
2.2.4.4	Waste Management	20
2.2.4.5	Vegetation Preservation	21
2.3	Empirical Review	21
2.3.1	Benefits, Importance, and Challenges	21
2.3.1.1	Benefits of Well-Planned Site Selection and Design	21
2.3.1.2	Importance of Site Planning Criteria for Go-Kart Complexes	22
2.3.1.3	Challenges in Site Selection and Planning	23
2.3.2	Factors Influencing Site Selection	23
2.3.2.1	Location and Accessibility	23
2.3.2.2	Land Availability	24
2.3.2.3	Zoning Regulations	25
2.3.2.4	Surrounding Land Uses	25
2.3.2.5	Infrastructure	26
2.3.2.6	Utilities	26
2.3.2.7	Waste Management	27
2.3.3	Site Analysis	27
2.3.3.1	Topography	28
2.3.3.2	Soil Conditions	28
2.3.3.3	Existing Infrastructure Assessment	29

2.3.4	Zoning Regulations	29
2.3.4.1	Zoning Classification	30
2.3.4.2	Permitted Uses	30
2.3.4.3	Zoning Changes or Variances	31
2.3.5	Regulatory Compliance and Permitting	31
2.3.5.1	Building Codes	31
2.3.5.2	Environmental Regulations	32
2.3.5.3	Health and Safety Standards	32
2.3.5.4	Permitting Process	33
2.3.6	Site Planning Strategies	33
2.3.6.1	Layout Design and Configuration	34
2.3.6.2	Infrastructure	38
2.3.6.3	Parking and Circulation Considerations	39
2.3.6.4	Landscaping and Aesthetics	40
Chapter Three:	Research Methodology	
3.1	Research Design	41
3.2	Case Study Selection	41
3.3	Framework Analysis Criteria	42
3.3.1	Location and Accessibility:	42
3.3.2	Site Size and Configuration:	42
3.3.3	Zoning and Regulatory Compliance:	42
3.3.4	Safety and Security:	43

3.3.5	Environmental Impact:	43
3.3.6	User Experience and Amenities:	43
3.3.7	Operational Considerations:	43
3.3.8	Future Expansion and Flexibility:	43
3.4	Case Study Analysis	44
3.4.1	Case Study One - Dallas Karting Complex	44
3.4.1.1	Project Information	44
3.4.1.2	Facility Description	45
3.4.1.3	Spatial Accommodation	46
3.4.1.4	Framework Analysis	47
3.4.1.5	Appraisals	48
3.4.2	Case Study Two - Track House Motorplex	48
3.4.2.1	Project Information	48
3.4.2.2	Facility Description	49
3.4.2.3	Spatial Accommodations	50
3.4.2.4	Framework Analysis	51
3.4.2.5	Appraisals	52
3.4.3	Case Study Three - Orlando Kart Center	52
3.4.3.1	Project Information	52
3.4.3.2	Facility Description	53
3.4.3.3	Spatial Accommodation	54
3.4.3.4	Framework Analysis	55

3.4.3.5	Appraisals	56
3.4.4	Case Study Four - K1 Speed (Outdoor Track)	56
3.4.4.1	Project Information	56
3.4.4.2	Facility Description	57
3.4.4.3	Spatial Accommodation	57
3.4.4.4	Framework Analysis	57
3.4.4.5	Appraisals	58
3.4.5	Case Study Five - Buckmore Park Kart Circuit	59
3.4.5.1	Project Information	59
3.4.5.2	Facility Description	60
3.4.5.3	Spatial Accommodation	62
3.4.5.4	Framework Analysis	62
3.4.5.5	Appraisals	62
3.4.6	Case Study Six - Rye House Kart Raceway	62
3.4.6.1	Project Information	62
3.4.6.2	Facility Description	64
3.4.6.3	Spatial Accommodation	64
3.4.6.4	Framework Analysis	65
3.4.6.5	Appraisals	66
3.4.7	Case Study Seven - Bush Riders Go-Karting	66
3.4.7.1	Project Information	66
3.4.7.2	Facility Description	66
3.4.7.3	Spatial Accommodation	68

3.4.7.4	Framework Analysis	68
3.4.7.5	Appraisals	68
3.4.8	Case Study Eight – Go Kart Arena (Pentorise)	69
3.4.8.1	Facility Description	69
3.4.8.2	Framework Analysis	70
3.4.8.3	Appraisals	72
3.5	Case studies Adoptions	73
Chapter Four:	Site Analysis and Design Synthesis	
4.1	The Study Area	74
4.1.1	Site Location	75
4.1.2	Site Selection Criteria	76
4.1.3	Site Analysis	79
4.2	Project Analysis and Design Synthesis	81
4.2.1	Brief Analysis	81
4.2.2	Brief Development	82
4.2.3	Design Considerations	82
4.2.4	Conceptual Development	85
4.2.5	Functional Relationship	86
4.2.6	Space Allocation/Schedule of Accommodation	88
4.2.7	Construction Methods and Materials	89

4.2.8	Building Services	90
4.2.8.1	Heating, Ventilation, and Air Conditioning (HVAC) and Mechanical Systems	90
4.2.8.2	Electrical Systems	91
4.2.8.3	Plumbing and Sanitary Systems	91
4.2.8.4	Fire Protection and Life Safety Systems	91
4.2.8.5	Communications and Security Systems	92
4.2.8.6	Technology Integration	92
4.2.8.7	Sustainability and Energy Management	92
4.2.8.8	Accessibility and Universal Design	93
Chapter Five: Conclusion and Recommendation		
5.1	Project Appraisal	94
5.1.1	Strengths of the Project	95
5.2	Conclusion	95
5.3	Recommendations	96
References		97
Appendices		113
Bio-data		120
The University Compliance Certification		123

List of Table

Table	Title	Page
4.1	Spatial Program	88

Lead City University Ibadan DO NOT COPY

List of Figures

Figures	Title	Page
2.1	Site Planning of a Go kart Track	10
2.2	Indoor Go-Kart Complex	11
2.3	Outdoor Go-kart Complex	12
3.1	Dallas Karting Complex	44
3.2	Aerial Site View of Dallas Karting Complex	45
3.3	Dallas Karting Complex	46
3.4	Safety Barrier of Dallas Karting Complex	47
3.6	Track Layout of Track House Motorplex	49
3.7	Track House Motorplex Go-Karts	50
3.8	Track House Motorplex	51
3.9	Track House Motorplex	51
3.10	Orlando Kart Center	53
3.11	Orlando Kart Center Go-Karts	54
3.12	Orlando Kart Center Go-Karts	54
3.13	Track Design and Safety of Orlando Kart Center	55
3.14	K1 Speed (Outdoor Track)	56
3.15	K1 Speed (Outdoor Track)	57
3.16	Safety Barrier of K1 Speed (Outdoor Track)	58
3.17	Buckmore Park Kart Circuit	59
3.18	Aerial View of Buckmore Park Kart Circuit	59
3.19	Aerial View of Buckmore Park Kart Circuit	60
3.20	Buckmore Park Kart Circuit	61

3.21	Track Configuration at Buckmore Park Kart Circuit	61
3.22	Rye House Kart Raceway	63
3.23	Rye House Kart Raceway Aerial View	63
3.25	Rye House Kart Raceway Track	65
3.26	Bush Riders Go-Karting	67
3.27	Bush Riders Go-Karting Track Configuration	67
3.28	Bush Riders Go-Karting Track Configuration	68
3.29	Picture Showing Go-Karts at Go Kart Arena (Pentorise)	69

Lead City University Ibadan DO NOT COPY

List of Plates

Plates	Title	Page
3.1	Picture Showing Safety Barrier at Go Kart Arena (Pentorise)	70
3.2	Picture Showing the Track Layout at Go Kart Arena (Pentorise)	71
3.3	Picture Showing the Safety Barrier at Go Kart Arena (Pentorise)	72
4.1	Picture Showing Site Location	75
4.2	Picture Showing Site Location (Blow Out)	76
4.3	Site Analysis	79
4.4	Conceptual Design	86
4.5	Site Zoning	87
4.6	Bubble Diagram	87
4.7	Spatial Requirements	88

Lead City University Ibadan DO NOT COPY

Chapter One

Introduction

1.1 Background to Study

Go-karting, over the past few decades has transitioned from a niche motorsport to a global recreational phenomenon significantly expanding the landscape of leisure activities. Within the dynamic realm of motorsports and leisure activities, go-karting has emerged as a widely embraced and accessible pursuit, captivating enthusiasts of diverse demographics. The resurgence of interest in motorsports has led to an increase in the construction of go-kart complexes, highlighting the need for well-planned facilities that meet modern standards.

Site planning involves the comprehensive arrangement of land, facilities, and infrastructure to optimize functionality, safety, and aesthetic appeal. A go-kart complex refers to a specialized recreational facility designed for kart racing, encompassing tracks, spectator areas, and ancillary services. The evolution of go-karting has introduced new dimensions, intertwining technological advancements with the visceral thrill of racing (Rowland, 2018). Go-kart complexes are not merely venues for competition; they serve as hubs for community engagement, training grounds for aspiring racers, and entertainment spaces for spectators (Zaremba, 2021). The design and planning of go-kart complexes necessitate a thorough understanding of site planning principles and criteria crucial to ensuring safety, enhancing user experience, and maximizing operational efficiency. This includes considering factors such as track design, safety barriers, spectator areas, and support facilities like parking and maintenance zones (Yost, 2018).

In light of this, understanding the intricate relationship between the foundational principles of site planning and the multifaceted nature of go-karting is paramount. The intricate interplay of safety,

functionality, and aesthetic considerations demands a comprehensive understanding of the parameters governing the development of these facilities. The absence of standardized guidelines poses challenges for both industry professionals and enthusiasts, calling for an in-depth exploration into the fundamental aspects of site planning for go-kart complexes (International Karting Federation, 2020).

By delving into these aspects, this study aims to contribute valuable insights to the fields of architecture, urban planning, and motorsports, and bridge the global and local perspectives. This research will not only address the current gaps in knowledge but also provide a framework for developing go-kart facilities that are safe, efficient, and enjoyable for all users (Mangles, 2019).

1.2 Problem Statement

The dynamic nature of go-karting is coupled with the lack of universally recognized site planning criteria. Despite the growing interest in go-karting, many complexes face challenges due to inadequate site planning. Issues such as safety hazards, poor user experience, and operational inefficiencies often arise from suboptimal designs. Tracks with improper layouts, insufficient spectator facilities, and neglect of environmental considerations can undermine the success of a go-kart complex. There is an urgent need to establish comprehensive site planning criteria to address these challenges and support the development of high-quality go-kart facilities.

1.3 Research Aim and Objectives

The aim of this study is to establish a comprehensive set of site planning criteria for the design and development of go-kart complexes, fostering safety, accessibility, and an enriched user experience.

The specific objectives of the study are:

- i. To identify and analyze key site planning criteria embedded in successful go-kart complexes designs.

- ii. To assess the impact of these site planning criteria on safety, functionality, and the overall user experience within go-karting facilities.
- iii. To formulate practical guidelines based on the identified site planning criteria to enhance the design and planning of go-kart complexes.

1.4 Research Questions

In order to guide the research, the study will address the following questions:

- i. What pivotal site planning criteria are embedded in successful go-kart complex designs?
- ii. How do this site planning criteria impact safety, functionality, and the overall user experience within go-karting facilities?
- iii. What practical guidelines can be derived from the identified site planning criteria to enhance go-kart complex design?

1.5 Significance of Study

This research holds paramount significance as it addresses a gap in the literature regarding the site planning of go-kart complexes, and contributes valuable insights to the fields of architecture, urban planning, designers, regulatory bodies, motorsports industry and the broader community of go-karting enthusiasts by merging global best practices with localized considerations in creating purposeful and safe go-kart complexes.

By unraveling the intricacies of site planning criteria, the study aims to contribute to the establishment of standardized guidelines, promoting the creation of go-kart complexes and will also serve as a valuable resource for educational institutions and training programs focused on recreational facility design.

1.6 Scope of Study

This research focuses on a comprehensive analysis of existing go-kart arena designs, with a specific emphasis on site planning criteria. The scope includes an in-depth review of existing literature, exploration of case studies, and the subsequent development of guidelines based on the identified criteria. While the study focuses primarily on go-kart complexes, the findings may be applicable to other types of recreational motorsport facilities. The geographic scope is not limited to a specific region, allowing for a broad application and relevance of the findings.

1.7 Limitations of the Study

While this study aims to be comprehensive, it is subject to certain limitations. The study may face limitations such as restricted access to detailed proprietary information from existing go-kart complex operators and variations in regulatory standards across different regions. Additionally, the diversity of user preferences and environmental conditions may pose challenges in generalizing the findings. Despite these limitations, the study aims to provide vigorous and applicable site planning criteria that can be adapted to various contexts.

1.8 Operational Definition of Terms

Go-kart Complex: A facility designed for go-kart racing and related activities, including the track, pit areas, spectator zones, and support infrastructure for the purpose of recreational driving.

Site Planning: The process of arranging and designing the physical layout of a go-kart complex, including the track, buildings, and other amenities to achieve specific functional and aesthetic objectives.

Site Planning Criteria: Specific and comprehensive sets of guidelines and standards governing the layout, design, and development of go-kart complexes.

Track Layout: The design and configuration of the go-kart racing track, including its shape, length, turns, and elevation changes.

Safety Features: Elements incorporated into the design of the go-kart complex to prevent accidents and ensure the safety of participants and spectators, such as barriers, run-off areas, and safety signage.

Safety Standards: Established regulations and protocols aimed at ensuring the well-being and security of participants and spectators during go-karting events.

User Experience: The degree to which users' expectations and satisfaction are met using the go-kart complex, including accessibility and engagement.

Environmental Sustainability: Practices that minimize the environmental impact of a go-kart complex, including resource conservation and eco-friendly design elements.

Urban Integration: The seamless incorporation of go-kart complex into urban landscapes, considering factors such as accessibility, aesthetics, and community impact.

Chapter Two

Literature Review

2.1 Conceptual Review

2.1.1 Site Planning

Site planning is a comprehensive process that involves the strategic organization of land use, considering both natural and built environments to create functional, sustainable, and aesthetically pleasing spaces (Groat & Wang, 2021). It involves the placement of buildings, circulation systems, and open spaces in a manner that facilitates functional and aesthetic needs while considering environmental, regulatory, and social factors (McBride & Stein, 2021). Site planning includes arranging and designing of buildings, infrastructure and open spaces optimizing land use (Hester & Miles, 2022). It integrates various disciplines including architecture, landscape architecture, urban planning, and engineering to ensure that the land use is efficient, sustainable, and meets the needs of its users (American Planning Association, 2021).

2.1.1.1 Brief History of Site Planning

The origins of site planning can be traced back to ancient civilizations such as Mesopotamia, Egypt, and the Indus Valley, where early humans known as early urban planner developed settlements with considerations for essential resources such as water access, defense mechanisms, agricultural and devised systematic layouts for cities, including residential, commercial, and public spaces (Hall, 2023). The Greeks and Romans further advanced site planning with their development of city grids, public forums, and aqueduct systems. During the Renaissance, site planning saw a revival of classical

principles with an emphasis on symmetry, proportion, and aesthetics, as evidenced in the planning of cities like Venice and Florence (Calthorpe & Fulton, 2022).

Site planning has evolved significantly from ancient civilizations, where it primarily focused on practical aspects such as defense and agriculture, to contemporary practices that emphasize sustainability, community well-being, and environmental integration. In the 19th and 20th centuries, the Industrial Revolution and subsequent urbanization brought new challenges and innovations in site planning, including the development of zoning laws and the incorporation of green spaces (Davies, 2020). Today, site planning integrates advanced technologies such as Geographic Information Systems (GIS) and computer-aided design (CAD) to address contemporary issues like sustainability, climate resilience, and urban sprawl (Wang & Li, 2021).

2.1.1.2 Principles of Site Planning

Key principles of site planning include:

- i. Functionality:** Creating spaces that serve their intended purpose effectively. This involves considering the needs of users, the flow of activities, and the integration of different site elements to create a coherent and practical space (Talen, 2020).
- ii. Aesthetics:** Designing visually appealing environments. This includes the design of buildings, landscapes, and public spaces to enhance the user experience and contribute to the overall attractiveness of the site (Jacobs, 2022).
- iii. Sustainability:** Incorporating environmentally friendly practices to minimize ecological impact. This involves using sustainable materials, incorporating renewable energy sources, and ensuring that the site design supports biodiversity and reduces resource consumption (Smith & Taylor, 2021).

- iv. **Accessibility:** Ensuring easy and safe access for all users, including those with disabilities (Nguyen & Fahim, 2020).
- v. **Safety:** Implementing measures to protect users from hazards. This includes incorporating features such as proper lighting, emergency access routes, and safe pedestrian pathways to ensure the well-being of all users (Wang, 2023).

2.1.1.3 Criteria of Site Planning

Site planning criteria extend the principles by providing specific measures and guidelines for evaluating and selecting sites. These criteria help planners evaluate potential sites and design spaces that meet various functional, environmental, and regulatory requirements (Berke & Campanella, 2023).

Key criteria include:

- i. **Environmental Impact:** Assesses the potential environmental effects of the development. This includes evaluating impacts on natural resources, biodiversity, and local ecosystems, and implementing measures to mitigate negative effects (Gibson, 2020).
- ii. **Regulatory Compliance:** Involves ensuring that the site development complies with local zoning laws, building codes, and other regulatory requirements. Compliance with regulations is crucial to avoid legal issues and ensure the smooth implementation of the project (Li et al., 2022).
- iii. **Economic Feasibility:** Evaluating cost implications and financial viability (Timmons & Flores, 2021).
- iv. **Land Use Compatibility:** Ensures that the proposed development is compatible with surrounding land uses. This includes considering the impacts on neighboring properties and ensuring that the development fits within the broader community context (Oliver, 2021).

- v. **Accessibility:** Involves evaluating the site's connectivity to transportation networks, including roads, public transit, and pedestrian pathways. Good accessibility ensures that the site is easy to reach for users, which is particularly important for public and commercial spaces (Gordon, 2020).
- vi. **Infrastructure Availability:** Examines the availability of necessary infrastructure, such as water, electricity, sewage, and telecommunications. Adequate infrastructure is essential for the site's functionality and sustainability (Chen & Wu, 2022).

2.1.2 Site Planning in Recreational Facilities

Recreational facilities are designed to accommodate leisure activities and promote community engagement. Effective site planning in recreational contexts ensures that facilities are accessible, safe, and environmentally sustainable (Anderson & Vavra, 2021). This process includes analyzing site characteristics, evaluating potential impacts on surrounding areas, and designing facilities that enhance user experience while respecting natural ecosystems.

In recreational facility planning, Alexander et al. (1977) introduced the concept of "pattern language," which outlines common solutions to recurring design problems. This concept is particularly relevant to go-kart complex design, where patterns of circulation, activity zones, and safety measures must be carefully integrated. Site planning for recreational facilities like go-kart complexes requires special attention to unique factors that influence both the functionality and user experience (Smith & Tews, 2021).

2.1.3 Go-Kart Complex

Go-karting is a popular motorsport and recreational activity that requires careful planning and design to ensure safety, functionality, and enjoyment (Nemecek, 2022). The goal is to establish a comprehensive understanding of the key factors involved in designing an effective go-kart complex.



Figure 2.1: Site Planning of a Go kart Track

Source: (<https://www.flickr.com/photos/9859321@N08/>)

Site planning is a multidisciplinary process that integrates urban design principles with environmental considerations to optimize the spatial organization of built environments. In the case of recreational facilities like go kart complexes, effective site planning ensures optimal functionality and enhances user experience (Richards, 2023).

A go-kart complex is a recreational facility designed specifically for kart racing, featuring tracks of varying configurations and support facilities that cater to both participants and spectators. The primary components of a go-kart complex include the race track, pit area, maintenance facilities, spectator stands, and amenities like restrooms, food stalls, and parking lots (Phillips & Turner, 2023).

2.1.3.1 Brief History and Evolution

Go-karting originated in the United States in the late 1950s, with Art Ingels, a race car builder, credited with creating the first go-kart in 1956, as a leisure activity and quickly evolved into a competitive sport.

Initially, tracks were simple and rudimentary, but over time, go-karting evolved into a structured sport with established regulations and standards. The development of go-karting tracks and complexes mirrored this evolution, advancements in technology and increased popularity have led to transitioning from informal dirt tracks to sophisticated track designs and enhanced safety measures (Walker, 2021). Today, go-kart complexes range from small indoor tracks to large outdoor facilities, catering to a wide range of participants from casual racers to professional competitors (Jackson & Lee, 2022).

2.1.3.2 Types of Go-Kart Complexes

Go-kart complexes with distinct features and considerations can be broadly categorized into:

- i. **Indoor Go-Kart Complexes:** These are typically located within large buildings or warehouses, allowing for year-round operation regardless of weather conditions. Indoor tracks are usually smaller and designed with tight turns and short straights to maximize the use of space. The controlled environment of indoor complexes offers consistent track conditions, making them ideal for beginners and casual racers (Brown, 2023).

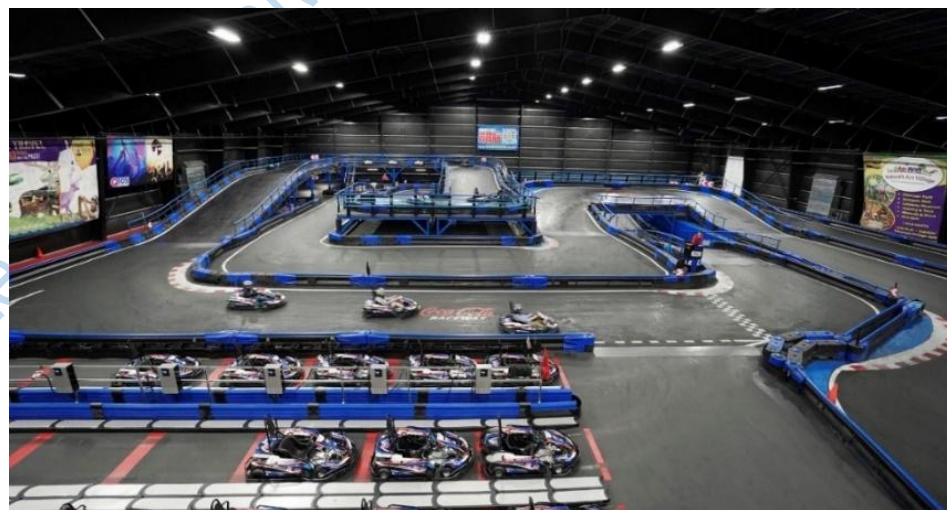


Figure 2.2: Indoor Go-Kart Complex

Source: (<https://superchargedracing.com/indoorkarting/>)

- ii. **Outdoor Go-Kart Complexes:** Outdoor complexes are larger and incorporate natural terrain features, providing a more varied and challenging racing experience. These tracks often include long straights, sweeping curves, and elevation changes. Outdoor complexes can host larger events and accommodate more participants, making them suitable for competitive racing and professional events. However, they are subject to weather conditions, which can affect track usability and safety (Simpson, 2023).



Figure 2.3: Outdoor Go-kart Complex

Source: (<https://midlandkarting.co.uk/sponsorship/>)

- iii. **Hybrid Tracks:** Combining elements of both indoor and outdoor tracks for versatility (Kennedy & Zhang, 2022).

2.1.3.3 Categories of Go-Kart Complexes

Go-kart complexes can be further categorized based on their intended use and user demographics:

- i. **Leisure Complexes:** Designed for casual racers and families, these facilities prioritize fun and accessibility. They often feature shorter, simpler tracks and a range of amenities such as arcades and food courts (Morgan & Kaye, 2021).
- ii. **Competitive Complexes:** These are designed for serious racers and often host professional competitions. They feature longer, more complex tracks with technical sections that challenge drivers' skills (Harris, 2022).

2.2 Key Design Considerations

2.2.1 Safety Measures

2.2.1.1 Emergency Access

Planning for emergency access involves ensuring quick and unobstructed access for emergency vehicles and personnel critically. This includes designated lanes, clearly marked entry and exit points, wide pathways, strategic placement of emergency response equipment and clear signage (National Fire Protection Association, 2016). This ensures quick and efficient responses to any incidents that may occur within the complex. Key considerations include:

- i. **Clearly Marked Entry and Exit Points:** These should be easily identifiable and accessible from main roads. Signage should be visible and informative to guide emergency responders (FEMA, 2021).
- ii. **Wide Pathways:** Pathways within the complex should be wide enough to accommodate emergency vehicles. This includes ensuring that there are no obstructions, such as parked cars or barriers, that could impede access (National Fire Protection Association, 2022).
- iii. **Strategic Placement of Emergency Equipment:** Fire extinguishers, first aid kits, and emergency phones should be placed at regular intervals throughout the complex. This ensures

that help is always within reach, reducing response times in case of an emergency (American Red Cross, 2023).

2.2.1.2 Lighting

Proper illumination enhances visibility, ensuring safe driving conditions and reducing accidents, especially for nighttime operations (Illuminating Engineering Society, 2019). Important aspects include:

- i. **Track Lighting:** High-intensity lights should be installed along the track to illuminate the racing surface, corners, and barriers. This helps drivers navigate the track safely and avoid collisions (Illuminating Engineering Society, 2023).
- ii. **Spectator and Facility Lighting:** Areas such as spectator stands, parking lots, and walkways should be well-lit to ensure the safety and security of visitors. Proper lighting in these areas prevents accidents and deters criminal activity (U.S. Department of Energy, 2022).

2.2.1.3 Fencing and Barriers

Robust fencing and barriers prevent unintended exits from the track, protecting both participants and spectators (International Karting Federation, 2020). Effective fencing and barrier systems should:

- i. **Absorb Impact:** Barriers should be designed to absorb the impact of a collision, minimizing the risk of injury to drivers and damage to karts. Materials such as tire walls, Tecpro barriers, and Armco barriers are commonly used for this purpose (Racecar Engineering, 2021).
- ii. **Prevent Exit:** Fences should be high and sturdy enough to prevent karts from exiting the track area. This protects spectators and staff from the risk of being hit by a kart (International Karting Federation, 2020).

- iii. **Segregate Areas:** Fencing can also be used to segregate different areas of the complex, such as the track, pit area, and spectator zones. This helps manage the flow of people and enhances safety by preventing unauthorized access to restricted areas (FIA, 2023).

2.2.1.4 Fire Safety Measures

Incorporating fire extinguishers, sprinklers, and clear evacuation routes are essential to manage fire hazards. Developing and practicing emergency evacuation plans and conducting regular fire drills are also crucial components. These measures ensure preparedness and quick response in case of fire incidents (Occupational Safety and Health Administration, 2015). Key components of a comprehensive fire safety strategy include:

- i. **Fire Extinguishers:** These should be placed at strategic locations throughout the complex, including the track area, pit area, and spectator stands. Extinguishers should be regularly inspected and maintained to ensure they are in working condition (National Fire Protection Association, 2022).
- ii. **Sprinkler Systems:** In indoor complexes, sprinkler systems can provide automatic fire suppression in the event of a fire. These systems should be designed and maintained in accordance with local fire safety regulations (Fire Protection Research Foundation, 2023).
- iii. **Fire Alarms:** Installing fire alarms ensures that any outbreak of fire is quickly detected and communicated to all occupants of the complex. Regular drills and maintenance checks should be conducted to ensure the system's effectiveness (American National Standards Institute, 2021).

2.2.1.5 Surveillance Systems

Surveillance systems help monitor activities within the complex, ensuring safety and security. These systems can deter misconduct, provide evidence in case of incidents, and aid in emergency responses.

Installing CCTV and other monitoring systems enhances security and helps in managing emergencies effectively (Security Industry Association, 2018). Key considerations include:

- i. **CCTV Cameras:** Closed-circuit television (CCTV) cameras should be strategically placed to cover key areas such as the track, pit area, spectator stands, and parking lots. High-resolution cameras ensure clear footage for monitoring and review (Security Industry Association, 2022).
- ii. **Monitoring Stations:** Surveillance footage should be monitored in real-time by trained personnel. This allows for quick response to any suspicious or dangerous activity (Bureau of Justice Assistance, 2021).
- iii. **Recording and Storage:** Surveillance systems should have sufficient storage capacity to retain footage for a reasonable period, typically 30 days. This ensures that any incidents can be reviewed and investigated if necessary (IEEE, 2020).

2.2.2 Track Layout and Dimensions

Effective layout design and configuration are critical for the successful operation of a go-kart complex.

- i. **Track Layout:** Designing the track layout involves considering factors such as length, width, turns, and elevation changes to create an exciting and challenging course. Ensuring adequate track width and appropriate banking of turns enhances safety and performance. Wider tracks allow for overtaking, while banked turns reduce the risk of skidding (Go-Kart Racing Association, 2023).
- ii. **Surface Materials:** Choosing the right surface materials for the track affects grip, durability, and maintenance. Asphalt or concrete surfaces are commonly used for their durability and smoothness (American Society for Testing and Materials, 2022).

- iii. **Safety Features:** Incorporating safety features, such as barriers, runoff areas, and emergency exits, is essential for protecting drivers and spectators. Regular maintenance of these features is necessary to ensure their effectiveness (International Karting Commission, 2021).
- iv. **Ancillary & Support Facilities:** Strategically locating support facilities, such as administrative offices, restrooms, and food outlets, enhances operational efficiency and visitor convenience. Ensuring easy access to these facilities is essential (International Facility Management Association, 2023).
- v. **Circulation:** Planning for smooth and efficient circulation of visitors, staff, and vehicles is crucial for reducing congestion and ensuring safety. This includes designing clear pathways and signage (Architectural Digest, 2021).

2.2.3 Spectator Areas

2.2.3.1 Viewing Stands and Seating

Providing comfortable and safe viewing areas for spectators, with clear sightlines to the track, is crucial. This includes grandstands, bleachers, and VIP areas (Doran & Pringle, 2023). They should be designed with safety and accessibility in mind, ensuring that all spectators, including those with disabilities, can enjoy the events. Key considerations include:

- i. **Viewing Stands:** These should be strategically placed to offer the best views of the track. Elevated stands provide clear sightlines, allowing spectators to follow the action easily.
- ii. **Seating:** Comfortable seating with adequate legroom and back support enhances the spectator experience. Options can range from basic bleachers to more sophisticated seating with individual seats and armrests.

- iii. **Capacity:** The capacity of spectator areas should match the expected number of visitors. This includes planning for peak events and ensuring that there is enough space for everyone to watch comfortably (Doran & Pringle, 2023).

2.2.3.2 Amenities for Spectators

Providing amenities for spectators enhances their overall experience and encourages repeat visits. Key amenities include:

- i. **Restrooms:** Clean and accessible restrooms should be conveniently located near spectator areas. They should be sufficient in number to handle peak crowds and maintained regularly (National Restaurant Association, 2021).
- ii. **Food and Beverage Outlets:** Offering a variety of food and beverage options enhances the visitor experience. These outlets should be conveniently located and comply with health and safety regulations (Food Safety and Inspection Service, 2022).
- iii. **Merchandise Shops:** Retail areas selling souvenirs, racing gear, and other merchandise can provide additional revenue and enhance the visitor experience. These shops should be easily accessible and well-stocked with popular items (Retail Merchandising Association, 2023).
- iv. **Accessibility for Disabled Spectators:** Ensuring that facilities are accessible to disabled visitors is both a legal requirement and a key aspect of inclusive design. This includes providing ramps, accessible restrooms, and designated seating areas (Disability Rights Education & Defense Fund, 2020).

2.2.4 Environmental Factors

2.2.4.1 Noise Control and Pollution

Implementing noise barriers, strategic track placement, using electric karts and operational limitations can reduce noise pollution, minimizing the impact on surrounding areas. Key measures include:

- i. **Sound Barriers:** Installing sound barriers or berms around the track can help reduce noise levels. These barriers can be made of materials such as earth, concrete, or specialized acoustic panels (Environmental Protection Agency, 2022).
- ii. **Vegetation:** Planting trees and shrubs around the complex can help absorb sound and create a natural buffer. This not only reduces noise but also enhances the aesthetic appeal of the site (Landscape and Urban Planning, 2021).
- iii. **Operational Controls:** Limiting the hours of operation and implementing noise restrictions during certain times can help minimize the impact on neighboring areas. Regular maintenance of karts and track surfaces can also reduce noise levels (Journal of Environmental Management, 2023).

2.2.4.2 Air Quality

Emissions from go-kart engines contribute to air pollution. Electric go-karts or those using cleaner fuel options can reduce the environmental footprint (Anderson, 2020). Maintaining good air quality, especially in indoor tracks, is critical. This can be achieved through proper ventilation and air purification systems. Measures to improve air quality include:

- i. **Emission Controls:** Implementing emission controls on karts, such as catalytic converters and regular maintenance, can reduce harmful emissions. Encouraging the use of electric or hybrid karts can also improve air quality (American Lung Association, 2023).

- ii. **Ventilation:** Ensuring proper ventilation in indoor complexes helps maintain air quality. This includes installing ventilation systems that circulate fresh air and remove pollutants (Zheng & Liu, 2021).
- iii. **Green Spaces:** Incorporating green spaces and vegetation within the complex can help improve air quality by absorbing pollutants and producing oxygen (Environmental Science & Technology, 2021).

2.2.4.3 Water Management

Effective water management strategies, including drainage systems and water recycling, are essential to prevent flooding and conserve resources. Key strategies include:

- i. **Stormwater Management:** Designing systems to capture and treat stormwater runoff can prevent pollution and reduce the risk of flooding. This includes using permeable pavements, retention ponds, and bioswales (Journal of Sustainable Water Resources, 2023).
- ii. **Water Conservation:** Implementing water conservation measures, such as low-flow fixtures and irrigation systems, can reduce water usage. Reusing greywater for landscaping and non-potable purposes can also contribute to conservation efforts.
- iii. **Wastewater Treatment:** Ensuring that wastewater is properly treated before being released into the environment is essential for preventing pollution. This includes installing septic systems or connecting to municipal sewage systems where available (United States Geological Survey, 2018).

2.2.4.4 Waste Management

Effective waste management includes recycling programs, proper disposal practices, and minimizing waste generation through design and operation. Key components include:

- i. **Recycling Programs:** Implementing recycling programs for materials such as plastic, metal, and paper helps reduce waste and promote sustainability. Clearly marked recycling bins should be placed throughout the complex (Waste Management, 2021).
- ii. **Waste Disposal:** Ensuring that waste is disposed of properly and in accordance with local regulations helps prevent environmental contamination. This includes using designated waste disposal areas and engaging licensed waste management services (Journal of Hazardous Materials, 2023).
- iii. **Minimizing Waste:** Designing the facility to minimize waste generation, such as using durable materials and reducing packaging, helps promote sustainability and reduce environmental impact (Green Building Council, 2022).

2.2.4.5 Vegetation Preservation

Incorporating existing vegetation into the site plan and adding green spaces can enhance the aesthetic appeal and contribute to environmental sustainability. Key considerations include:

- i. **Tree Preservation:** Protecting existing trees during construction and incorporating them into the site design helps maintain biodiversity and provides shade and aesthetic value.
- ii. **Native Plants:** Using native plants in landscaping reduces the need for irrigation and maintenance, supports local wildlife, and promotes ecological balance.
- iii. **Green Roofs and Walls:** Incorporating green roofs and walls into buildings can provide insulation, reduce stormwater runoff, and enhance the visual appeal of the complex (Urban Forestry & Urban Greening, 2023).

2.3 Empirical Review

2.3.1 Benefits, Importance, and Challenges

2.3.1.1 Benefits of Well-Planned Site Selection and Design

Well-planned site selection and design offer numerous benefits, including:

- i. Enhanced User Experience:** Thoughtful site design creates a functional and aesthetically pleasing environment, enhancing the overall user experience. This can lead to increased visitor satisfaction and repeat visits (O'Connor & Reddy, 2022).
- ii. Operational Efficiency:** Efficient site planning optimizes the use of space and resources, reducing operational costs and improving the overall functionality of the complex (Horner & Mason, 2022).
- iii. Environmental Sustainability:** Incorporating sustainable practices in site planning minimizes environmental impact, conserves resources, and promotes ecological health (Green & Harris, 2023).
- iv. Economic Viability:** A well-designed site can attract more visitors and events, boosting revenue and contributing to the economic viability of the complex (Marsh & Lawson, 2023).

2.3.1.2 Importance of Site Planning Criteria for Go-Kart Complexes

Site planning criteria are crucial for ensuring the successful development and operation of go-kart complexes. Key reasons include:

- i. Safety:** Adhering to site planning criteria ensures that safety measures are incorporated into the design, protecting drivers, spectators, and staff (Bates & Jenkins, 2021).
- ii. Compliance:** Following planning criteria helps ensure that the complex complies with local regulations, avoiding legal issues and ensuring smooth operation (Fisher et al., 2020).
- iii. Functionality:** Proper site planning creates a functional layout that meets the needs of users and optimizes the use of space and resources (Friedman, 2022).

- iv. **Environmental Protection:** Incorporating environmental considerations into site planning helps minimize the impact on natural resources and promotes sustainability (Martin & Clark, 2022).

2.3.1.3 Challenges in Site Selection and Planning

Despite the benefits, there are several challenges associated with site selection and planning for go-kart complexes:

- i. **Land Availability:** Finding suitable land that meets all the criteria for a go-kart complex can be challenging, particularly in urban areas where land is limited and expensive (Morgan & Lee, 2022).
- ii. **Regulatory Hurdles:** Navigating zoning laws, building codes, and environmental regulations can be complex and time-consuming, requiring significant expertise and resources (Wilson & Brown, 2023).
- iii. **Community Opposition:** Proposed developments can face opposition from local communities concerned about noise, traffic, and environmental impact. Engaging with stakeholders and addressing their concerns is crucial for successful planning (Russell, 2020).
- iv. Cost management is also a significant challenge, as initial investments can be substantial (Carson & Waller, 2022).

2.3.2 Factors Influencing Site Selection

Site selection criteria involve a set of guidelines and requirements used to evaluate and choose suitable locations for development. These criteria ensure that the chosen site meets all necessary standards for functionality, safety, and sustainability.

2.3.2.1 Location and Accessibility

The location and accessibility of the site are critical factors in site selection. Key considerations include:

- i. Proximity to Target Market:** The site should be conveniently located for the target audience, ensuring easy access for visitors. This includes considering the distance from population centers and major transportation routes (Scott et al., 2022).
- ii. Transportation Network:** Good connectivity to roads, public transit, and airports enhances accessibility and convenience for visitors. This includes evaluating traffic patterns and potential congestion (Larsen & Ahmed, 2023).
- iii. Parking Facilities:** Adequate parking is essential for accommodating visitors' vehicles. This includes considering the number of spaces, layout, and accessibility of parking areas (Evans & Patel, 2020).

2.3.2.2 Land Availability

Land availability and suitability are crucial factors in site selection. Key considerations include:

- i. Size and Shape:** The site should be large enough to accommodate all necessary facilities, including the track, spectator areas, and support buildings. The shape of the land should also be conducive to efficient layout and design (Peters & Owens, 2022).
- ii. Topography:** The topography of the site affects construction costs and design feasibility. Flat or gently sloping land is generally preferred for ease of construction and drainage (Wright et al., 2021).
- iii. Soil Conditions:** Soil conditions influence the stability and suitability of the site for construction. Conducting soil tests can help identify any potential issues and determine the need for special foundations or earthworks (Greenfield & Johnson, 2023).

2.3.2.3 Zoning Regulations

Understanding and complying with local zoning laws and land-use regulations is essential. Zoning regulations play a critical role in site selection. Key considerations include:

- i. **Zoning Classification:** The site's zoning classification determines the types of uses permitted. It is essential to ensure that the proposed go-kart complex is allowed under the current zoning regulations (Fox, 2020).
- ii. **Permitted Uses:** Understanding the permitted uses within the zoning classification helps ensure that all planned activities and facilities are compliant. This includes evaluating any restrictions on operating hours, noise levels, and building heights (Evans & Fisher, 2021).
- iii. **Zoning Changes or Variances:** In some cases, it may be necessary to seek zoning changes or variances to accommodate the go-kart complex. This process can be lengthy and requires engagement with local planning authorities (Andrews & Chang, 2022).

2.3.2.4 Surrounding Land Uses

The compatibility of surrounding land uses, such as residential areas, commercial zones, and other recreational facilities, can impact the site's suitability. Key considerations include:

- i. **Residential Areas:** Proximity to residential areas requires careful consideration of noise, traffic, and operating hours to minimize impact on residents (Allen & King, 2023).
- ii. **Commercial and Industrial Areas:** Being located near commercial and industrial areas can provide synergies and complementary uses, such as attracting corporate events or partnerships with nearby businesses (Harper & Lewis, 2021).

- iii. **Open Spaces and Recreational Areas:** Proximity to other recreational facilities can enhance the attractiveness of the go-kart complex and provide opportunities for joint marketing and promotions (Bohman & Nilsson, 2021).

2.3.2.5 Infrastructure

Transportation Network

The transportation network is a critical component of the site's infrastructure. Key considerations include:

- i. **Road Access:** The site should have good road access, including well-maintained roads that can handle the expected traffic volume. This includes evaluating the need for road improvements or new access points.
- ii. **Public Transit:** Availability of public transit options, such as buses or trains, enhances accessibility for visitors who do not drive. This includes considering the distance to the nearest transit stops and the frequency of service.
- iii. **Pedestrian and Bicycle Access:** Providing safe and convenient pedestrian and bicycle access can attract more visitors and reduce the demand for parking. This includes evaluating the availability of sidewalks, bike lanes, and secure bike parking (Lewis & Martin, 2022).

2.3.2.6 Utilities

Adequate utilities are essential for the functioning of the go-kart complex. Key considerations include:

- i. **Water Supply:** Ensuring a reliable and sufficient water supply is crucial for maintaining facilities, landscaping, and fire safety. This includes evaluating the availability and capacity of existing water infrastructure (Adams & Chen, 2020).

- ii. **Electricity Supply:** A stable and sufficient electricity supply is necessary for powering lighting, equipment, and other facilities. This includes assessing the capacity of the local grid and the need for any upgrades.
- iii. **Sewage and Wastewater Management:** Proper sewage and wastewater management is essential for health and hygiene. This includes evaluating the availability of municipal sewage services or the need for on-site treatment systems (Montanari & Radwan, 2023).

2.3.2.7 Waste Management

Effective waste management is critical for maintaining a clean and sustainable site. Key considerations include:

- i. **Waste Collection and Disposal:** Implementing a robust waste collection and disposal system ensures that all waste is properly managed. This includes providing adequate waste bins and ensuring regular collection services.
- ii. **Recycling Programs:** Establishing recycling programs helps reduce waste and promote sustainability. This includes providing recycling bins and educating visitors and staff on proper recycling practices.
- iii. **Hazardous Waste Management:** Proper management of hazardous waste, such as used oils and chemicals, is essential for environmental protection. This includes ensuring that such waste is stored and disposed of according to regulations (Singh & Kumar, 2021).

2.3.3 Site Analysis

Site analysis involves a comprehensive evaluation of the physical, environmental, and socio-economic characteristics of a potential site. This process identifies the strengths, weaknesses, opportunities, and threats associated with the site. It encompasses the following:

2.3.3.1 Topography

The topography of the site affects construction feasibility and costs. A relatively flat site minimizes grading work, reducing construction expenses. Key considerations include:

- i. **Slope:** Steep slopes can increase construction costs and pose challenges for building and infrastructure development. Gently sloping or flat land is generally preferred for ease of construction and drainage.
- ii. **Elevation:** The site's elevation can influence its exposure to wind, flooding, and other environmental factors. Higher elevations may offer better views and reduced flood risk but can also be more exposed to wind.
- iii. **Natural Features:** Incorporating natural features, such as hills, valleys, and water bodies, into the site design can enhance its aesthetic and recreational value. However, these features may also pose challenges for construction and require careful planning (Feng & Wang, 2022).

2.3.3.2 Soil Conditions

Soil conditions affect the stability and suitability of the site for construction. Key considerations include:

- i. **Soil Type:** Different soil types have varying load-bearing capacities and drainage characteristics. Conducting soil tests can help determine the suitability of the soil for construction and identify any need for special foundations or soil stabilization.

- ii. **Drainage:** Proper drainage is essential for preventing waterlogging and erosion. Evaluating the site's natural drainage patterns and implementing appropriate measures, such as grading and drainage systems, can help manage water effectively.
- iii. **Contamination:** Assessing the site for potential contamination from previous uses, such as industrial activities, is crucial for ensuring safety and environmental compliance. Remediation measures may be required if contamination is detected (Zhang & Chen, 2021).

2.3.3.3 Existing Infrastructure Assessment

Evaluating the existing infrastructure helps determine the need for upgrades or new installations. Key considerations include:

- i. **Roads and Access:** Assessing the condition and capacity of existing roads and access points helps identify any need for improvements or new access routes. This includes evaluating traffic patterns and potential congestion.
- ii. **Utilities:** Evaluating the availability and capacity of existing utilities, such as water, electricity, and sewage, helps determine the need for upgrades or new installations. This ensures that the site has adequate infrastructure to support the proposed development.
- iii. **Communications:** Ensuring that the site has reliable communication infrastructure, such as telephone and internet services, is essential for the functioning of the complex. This includes evaluating the availability of high-speed internet and mobile network coverage (Lindstrom & Hilty, 2020).

2.3.4 Zoning Regulations

Zoning regulations are laws that define how land within certain areas can be used. These regulations control the physical development of land and the kinds of uses allowed (Mumford, 1961).

2.3.4.1 Zoning Classification

Zoning classification categorizes land into different zones such as residential, commercial, industrial, and recreational. Each zone has specific regulations that dictate permissible activities and development standards.

- i. **Residential, Commercial, Industrial Zones:** Understanding the zoning classification helps ensure that the proposed go-kart complex is permissible. For example, the complex may need to be located in a commercial or recreational zone rather than a residential area.
- ii. **Mixed-Use Zones:** Some areas may be zoned for mixed-use, allowing a combination of residential, commercial, and recreational activities. This can provide greater flexibility in site selection and development (Gallagher & McPherson, 2020).

2.3.4.2 Permitted Uses

Understanding the permitted uses within a zone is essential to ensure that the go-kart complex complies with local regulations. This includes activities, structures, and operational guidelines.

- i. **Primary and Secondary Uses:** Identifying primary and secondary uses helps determine the full range of activities and facilities that can be developed. This includes evaluating any restrictions on ancillary uses, such as retail or food services.
- ii. **Conditional Uses:** Some uses may be conditionally permitted, requiring additional approvals or adherence to specific conditions. Understanding these conditions is essential for planning and development (Gallagher & McPherson, 2020).

2.3.4.3 Zoning Changes or Variances

Sometimes, it may be necessary to apply for zoning changes or variances to accommodate the go-kart complex. This process involves engaging with local authorities and the community to secure approval.

- i. **Rezoning:** Applying for rezoning involves changing the site's zoning classification to permit the intended use. This process requires engaging with local planning authorities and may involve public hearings.
- ii. **Variances:** Seeking variances involves requesting exceptions to specific zoning requirements, such as building height or setback restrictions. This process also requires approval from local authorities and may involve demonstrating that the variance is necessary and will not negatively impact the community (Gallagher & McPherson, 2020).

2.3.5 Regulatory Compliance and Permitting

Regulatory compliance involves adhering to all relevant laws and regulations governing construction and operation. Permitting is the process of obtaining official approval to develop and operate a facility (International Code Council, 2021).

2.3.5.1 Building Codes

Building codes are standards that regulate the design, construction, and occupancy of buildings. Building codes set standards for construction and safety.

- i. **Structural Safety:** Ensuring that all structures, including buildings and track elements, comply with structural safety standards is essential for preventing accidents and ensuring durability (American Society of Civil Engineers, 2020).
- ii. **Fire Safety:** Implementing fire safety measures, such as fire-resistant materials, sprinkler systems, and emergency exits, is crucial for protecting visitors and staff (National Fire Protection Association, 2022).

- iii. **Accessibility:** Ensuring that the site and facilities are accessible to individuals with disabilities is required by law and enhances the inclusivity of the complex (U.S. Access Board, 2020).

2.3.5.2 Environmental Regulations

Environmental regulations aim to protect natural resources and public health. Compliance involves conducting environmental impact assessments and implementing mitigation strategies (Environmental Protection Agency, 2022).

- i. **Pollution Control:** Implementing measures to control air, water, and noise pollution helps ensure compliance with environmental standards and protects the local environment (Environmental Law Institute, 2023).
- ii. **Habitat Protection:** Ensuring that the development does not harm local wildlife habitats or endangered species is essential for compliance with environmental regulations (World Wildlife Fund, 2021).
- iii. **Resource Management:** Implementing sustainable practices, such as water conservation and waste reduction, helps minimize the environmental impact of the complex (Global Environmental Facility, 2021).

2.3.5.3 Health and Safety Standards

Health and safety standards ensure the well-being of workers and visitors. These include regulations on occupational safety, sanitation, and emergency (Occupational Safety and Health Administration, 2022).

- i. **Safety Equipment:** Providing necessary safety equipment, such as helmets and protective gear, for participants helps prevent injuries (Go Kart Safety Institute, 2022).

- ii. **Emergency Procedures:** Establishing and training staff on emergency procedures, such as first aid and evacuation plans, is crucial for responding effectively to incidents (National Safety Council, 2022).
- iii. **Regular Inspections:** Conducting regular inspections of the track, facilities, and equipment helps identify and address potential hazards (International Karting Commission, 2023).

2.3.5.4 Permitting Process

The permitting process involves obtaining the necessary approvals to develop and operate the go-kart complex (Planning Institute of Australia, 2022).

- i. **Building Permits:** Obtaining building permits is required for constructing new facilities or making significant alterations to existing ones. This involves submitting detailed plans and complying with building codes (National Building Codes Commission, 2022).
- ii. **Environmental Permits:** Securing environmental permits ensures compliance with regulations protecting air, water, and soil quality. This may involve conducting environmental impact assessments and implementing mitigation measures (Environmental Protection Agency, 2023).
- iii. **Operational Permits:** Obtaining operational permits is necessary for running the go-kart complex, including permits covering aspects like safety inspections and business licensing for specific activities, such as hosting events or serving food and beverages (Small Business Administration, 2021).

2.3.6 Site Planning Strategies

Site planning strategies involve the application of best practices and innovative approaches to systematic design and developing of a site. These strategies aim to optimize functionality, sustainability, and user experience (Schodek et al., 2020).

2.3.6.1 Layout Design and Configuration

The layout and configuration of a go-kart complex must consider factors such as space utilization, safety, and visitor flow. Strategic placement of tracks, facilities, and amenities enhances operational efficiency and user satisfaction.

2.3.6.1.1 Track Layout and Configuration Specifics

I. Configurations

Track configurations are critical to the performance and safety of go-kart complexes. Track configurations provide a mix of straightaways and curves to challenge drivers while maintaining safety standards. Variations in elevation can add complexity. Different configurations offer varied racing experiences and cater to different skill levels. Common track configurations include:

- i. **Oval Tracks:** These tracks feature a simple, circular layout with smooth, continuous turns. They are easy to navigate and ideal for beginners and casual racers (Cohen & Harrison, 2022).
- ii. **Road Courses:** These tracks mimic real roadways with a mix of straight sections, sharp turns, and elevation changes. They provide a more challenging and engaging racing experience for skilled drivers (Bennett, 2020).
- iii. **Sprint Tracks:** These are shorter tracks designed for quick, intense races. They often include a series of tight turns and short straights, testing the driver's skill and reflexes (Peters & Evans, 2021).

- iv. **Endurance Tracks:** These longer tracks are designed for endurance racing, featuring a mix of fast straights and technical sections. They test both the driver's skill and the kart's durability over extended periods (Thompson, 2021).

II. Dimensions

Tracks should be wide enough to allow safe overtaking and have surfaces that provide good traction and durability. Proper track dimensions and design considerations are essential for ensuring safety and optimizing the racing experience. Key aspects include:

- i. **Track Width:** The width of the track should accommodate multiple karts racing side by side. Standard dimensions for track widths range from 6 to 10 meters, providing enough space for overtaking and safe navigation (Tavares et al, 2021).
- ii. **Banking:** Banking refers to the inclination of the track, which can enhance safety and speed. Proper banking design reduces the risk of skidding and improves kart handling. Incorporating appropriate banking is essential for a safe and exciting racing experience (Johnson, 2022).
- iii. **Track Length:** The length of the track varies depending on the type of racing and available space. Tracks can range from 300 meters for indoor sprint tracks to over 1 kilometer for outdoor endurance tracks (Zhu et al., 2023).
- iv. **Turn Radius:** The radius of turns should be designed to challenge drivers while maintaining safety. Tight turns require lower speeds and greater skill, while wider turns allow for higher speeds (Garcia, 2020).
- v. **Elevation Changes:** Incorporating elevation changes adds complexity and excitement to the track. Proper grading and banking help manage these changes and ensure safe navigation (Harris, 2021).

- vi. **Track Surface Materials:** Selecting durable and appropriate materials for the track surface to ensure longevity and safety. The choice of surface material affects the track's durability and driving conditions. Asphalt and concrete are commonly used materials, offering a smooth driving surface and good traction (Baker & Thorne, 2023).

2.3.6.1.2 Safety Features

Safety is paramount in go-kart track design. Incorporating barriers, runoff areas, and emergency exits to enhance safety and to minimize accidents. Barriers should be made of impact-absorbing materials, and run-off areas should be spacious enough to safely decelerate out-of-control karts (IKF, 2021; NKA, 2020).

I. Barrier and Containment Systems

- i. **Protex Karting Barrier:** Designed with patented shock-absorbing characteristics, ensuring a sleek yet functional safety barrier that reduces the impact during collisions (Kart1, 2024).
- ii. **Custom-Manufactured Barricades:** These plastic barricades are recommended for their flexibility, portability, and ability to deflect upon impact, making them an ideal choice for go-kart track safety (OTW Safety, 2024).
- iii. **Containment System Standards:** Tracks must adhere to ASTM F2007 Standard Practice requirements, ensuring containment or barrier systems are at the same height as the kart to prevent overturning and minimize injury risks.
- iv. **Tire Containment Systems:** Should not have rims in the center to avoid additional hazards, and track bridges must include a secondary containment system for added safety (OTW Safety, 2024).

- II. Runoff Areas:** Runoff areas provide space for karts to slow down safely if they leave the track. These areas are typically designed with gravel or other materials to reduce speed. Incorporating sufficient runoff areas is essential for safety (National Association of Racing, 2019).
- III. Emergency Exits and Evacuation Routes:** Emergency exits and evacuation routes are critical for safety. They ensure that people can quickly and safely leave the complex in case of an emergency. Planning for these routes enhances the overall safety of the facility (Cheung, 2001).
- IV. Kart Maintenance and Safety Checks:** Go-karts should meet safety standards regarding speed limits, structural integrity, and braking systems. Regular maintenance and safety checks of the karts are essential for ensuring safe operation. Key considerations include:
- i. Inspection and Maintenance:** Conducting regular inspections and maintenance of karts helps identify and address any mechanical issues. This includes checking brakes, tires, steering, and engines.
 - ii. Safety Equipment:** Ensuring that all karts are equipped with necessary safety features, such as seat belts, roll cages, and kill switches, helps protect drivers in the event of an accident.
 - iii. Pre-Race Checks:** Performing pre-race safety checks on all karts ensures that they are in good working condition before each race. This includes checking fuel levels, tire pressure, and brake function (Harris, 2021).
- V. Safety Gear and driver safety training:** Mandatory use of safety gear such as helmets, gloves, and seat belts are essential. Providing safety training for drivers is crucial for preventing accidents and promoting safe driving behavior. Key components of driver safety training include:

- i. **Safety Briefings:** Conducting safety briefings before each race ensures that all drivers are aware of the rules, track layout, and safety procedures. This includes explaining the proper use of safety equipment and signaling systems.
- ii. **Driving Techniques:** Teaching proper driving techniques, such as braking, cornering, and overtaking, helps drivers navigate the track safely and reduce the risk of accidents.
- iii. **Emergency Procedures:** Training drivers on emergency procedures, such as what to do in the event of a collision or kart malfunction, helps ensure a quick and effective response to incidents (Miller, 2017).

2.3.6.2 Infrastructure

Infrastructure refers to the basic physical and organizational structures needed for the operation of the complex. This includes both on-site and off-site infrastructure, such as roads, utilities, and facilities that support the overall function and accessibility of the site.

2.3.6.2.1 Ancillary Facilities

Ancillary facilities are supplementary buildings and spaces that support the main operations of a complex.

- i. **Administrative Offices:** Spaces for management and operational staff. They house staff and provide spaces for meetings and administration. These offices should be conveniently located and equipped with necessary resources to aid support efficient management.
- ii. **Training Rooms and Classrooms:** Areas for training drivers and conducting educational programs. These facilities should be designed to accommodate various training needs, providing versatile spaces for various activities.
- iii. **Food and Beverage Outlets:** Providing refreshments for visitors and participants. These outlets should be strategically located and offer a variety of options.

- iv. **Retail and Merchandise Areas:** Selling racing gear and memorabilia.
- v. **First Aid and Medical Facilities:** Ensuring immediate medical assistance is available (Williams & Lee, 2022).

2.3.6.2.2 Support Facilities

Support facilities include essential services that ensure the smooth operation of the complex. These facilities provide necessary infrastructure and amenities for participants, spectators, and staff.

- i. **Parking Lots:** Adequate parking for visitors and staff. The layout should ensure easy access and safe pedestrian movement.
- ii. **Restrooms and Facilities:** Clean and accessible restrooms. These facilities should be regularly maintained and located throughout the complex.
- iii. **Ticket Booths and Reception Area:** Points for ticket sales and first point of contact for reception. These areas should be well-designed and staffed.
- iv. **Spectator Areas:** Comfortable and accessible viewing areas.
- v. **Storage and Maintenance Areas:** Secure storage for equipment and maintenance facilities. These areas should be secure and well-organized (Anderson et al., 2021).

2.3.6.3 Parking and Circulation Considerations

Effective parking and circulation plans ensure smooth traffic flow and accessibility. This includes designing parking layouts, entry and exit points, and pedestrian pathways.

- i. **Parking Layout:** Designing an efficient parking layout maximizes space and minimizes congestion. This includes considering the needs of different types of vehicles, such as cars, buses, and motorcycles.
- ii. **Pedestrian Pathways:** Providing clear and safe pedestrian pathways enhances visitor safety and convenience. These pathways should be well-marked and accessible.

- iii. **Traffic Flow:** Planning for smooth traffic flow within the complex reduces the risk of accidents and congestion. This includes designing appropriate entry and exit points and ensuring clear signage (Chen, 2020).

2.3.6.4 Landscaping and Aesthetics

Incorporating landscaping enhances the visual appeal and environmental quality of the site. Aesthetic considerations include green spaces, plantings, and architectural harmony.

- i. **Vegetation and Green Spaces:** Incorporating vegetation and green spaces enhances the visual appeal and provides areas for relaxation. This includes selecting appropriate plants and maintaining the landscape.
- ii. **Hardscaping:** Designing hardscaping elements, such as walkways, seating areas, and decorative features, adds to the functionality and aesthetics of the site. These elements should be durable and well-integrated into the overall design.
- iii. **Visual Design:** Ensuring that the visual design of buildings and facilities is attractive and cohesive enhances the overall experience. This includes considering architectural styles, color schemes, and signage (Nguyen & Patel, 2022).

Chapter Three

Research Methodology

3.1 Research Design

Methodology delineates the systematic approach through which a researcher intends to address their research inquiries. It serves as a structured plan designed to ensure the reliability and validity of the study's findings. Research methodology, therefore, encompasses the specific strategies, processes, or techniques utilized within this framework to gather and analyze data, fostering a deeper understanding of the subject matter (Indeed Editorial Team, 2024).

The study adopts a qualitative research methodology, specifically deploying a case study approach. The qualitative paradigm was employed to delve deeply into the nuances and complexities of the phenomena under investigation to explore how these criteria are implemented in real-world go kart complex projects and their impact on the overall design and user experience. By selecting case studies as the primary methodological lens, the research aims to facilitate a comprehensive understanding of the subject matter from multiple perspectives.

3.2 Case Study Selection

Eight case studies were selected to ensure a comprehensive analysis of the research topic. The cases include six foreign and two local examples to provide a diverse perspective. The selection criteria included:

- a) Relevance to the research question.
- b) Availability of comprehensive data online.
- c) Diversity in geographic and socio-economic contexts.

The selected case studies include both local and foreign cases to allow for a comparative analysis, enhancing the understanding of different contexts and practices. This diversity helps in identifying common patterns and unique factors influencing the study's objectives.

3.3 Framework Analysis Criteria

The selected case studies will be evaluated based on the specific criteria, which serve as the framework for this analysis. This is in line with several other similar studies that operationalized these variables:

3.3.1 Location and Accessibility:

1. Proximity to target demographic areas.
2. Access to major roads or highways for ease of transportation.
3. Availability of parking facilities for visitors.

3.3.2 Site Size and Configuration:

1. Sufficient space for the go karts track layout and associated facilities (e.g., pit area, spectator stands, administration building).
2. Consideration of site topography and terrain for optimal track design.

3.3.3 Zoning and Regulatory Compliance:

1. Adherence to local zoning regulations and land use policies.
2. Compliance with safety codes and standards for recreational facilities.

3.3.4 Safety and Security:

1. Implementation of safety measures such as barriers, fencing, and safety zones to prevent accidents and injuries.
2. Adequate lighting for night-time operations.
3. Emergency access routes and facilities for medical assistance.

3.3.5 Environmental Impact:

1. Minimization of environmental disturbance through sustainable site design practices (e.g., stormwater management, landscaping).
2. Consideration of noise pollution mitigation measures.

3.3.6 User Experience and Amenities:

1. Design of the track layout to provide engaging and challenging driving experiences.
2. Provision of amenities for visitors such as restrooms, concessions, and viewing areas.
3. Accessibility features for individuals with disabilities.

3.3.7 Operational Considerations:

1. Efficient circulation patterns for vehicles, visitors, and staff within the facility.
2. Integration of technology for timing systems, safety monitoring, and customer engagement.

3.3.8 Future Expansion and Flexibility:

1. Design flexibility to accommodate future expansion or modifications to the facility.
2. Consideration of long-term operational needs and growth potential.

By employing this comprehensive framework, these criteria will serve as guiding principles for the planning and design of go kart complexes, ensuring that the facilities are safe, accessible, sustainable, and enjoyable for users while complying with regulatory requirements and operational considerations.

3.4 Case Study Analysis

3.4.1 Case Study One - Dallas Karting Complex



Figure 3.1: Dallas Karting Complex

Source: (<https://1073kissfmtexas.com/fastest-go-karts-in-texas/>)

3.4.1.1 Project Information

The Dallas Karting Complex, situated in Caddo Mills, Texas, USA, is an impressive outdoor karting facility which was commissioned in 2011. The track stretches 1,448 meters in length and spans 9 meters in width. It features a challenging layout with eight (8) strategically placed turns and corners.

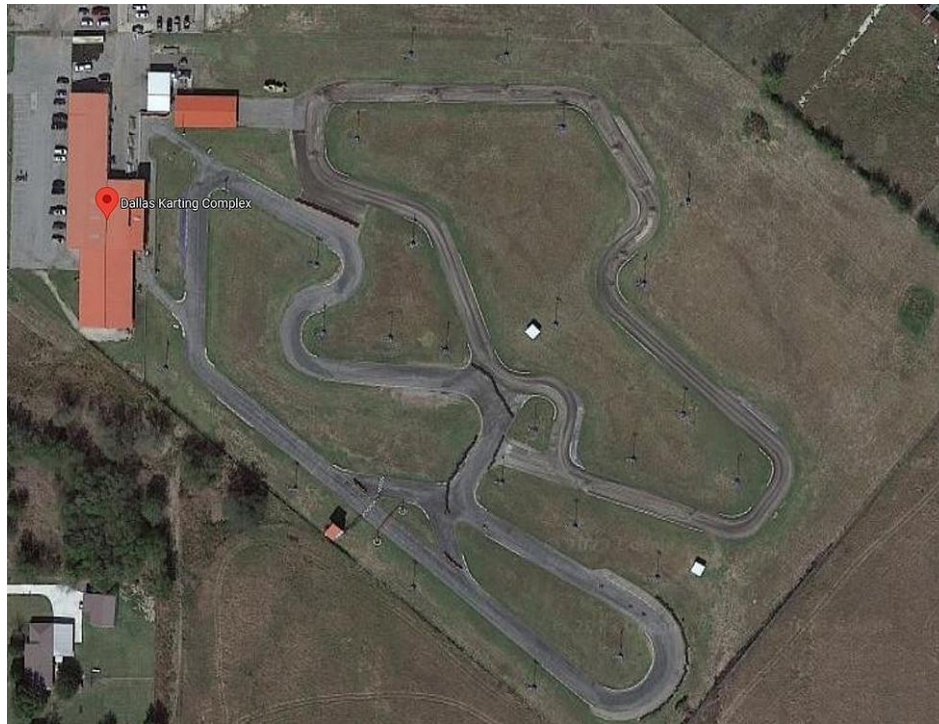


Figure 3.2: Aerial Site View of Dallas Karting Complex

Source: (<https://1073kissfmtexas.com/fastest-go-karts-in-texas/>)

3.4.1.2 Facility Description

- Dallas Karting Complex stands as a prominent outdoor karting facility in Texas, offering meticulously designed track layout with various configurations, top-notch facilities, and a vibrant racing community for karting enthusiasts to enjoy.
- Dallas Karting Complex prioritizes participant safety with safety barriers, trackside marshals, and comprehensive safety protocols to ensure a secure racing environment for all.
- The facility offers state-of-the-art amenities, including covered viewing areas, a pro shop offering karting equipment and accessories, and a cafe/snack bar serving refreshments for participants and spectators.

- The complex hosts a variety of karting events, including arrive-and-drive sessions, racing leagues, corporate events, and karting schools, catering to karting enthusiasts of all ages and skill levels.



Figure 3.3: Dallas Karting Complex

Source: (<https://1073kissfmtexas.com/fastest-go-karts-in-texas/>)

3.4.1.3 Spatial Accommodation

The facility offers amenities such as track layout, pit area, spectator area, a pro shop, café/snack bar, conference facilities, meeting rooms, toilets & shower facilities.

3.4.1.4 Framework Analysis



Figure 3.4: Safety Barrier of Dallas Karting Complex

Source: (<https://1073kissfmtexas.com/fastest-go-karts-in-texas/>)

- i. **Track Design and Safety:** Dallas Karting Complex's track layout and safety measures align with the site planning criteria for go-kart complex design. The track's design incorporates features such as challenging corners, fast straights, and safety barriers, providing an engaging and safe racing experience for participants.
- ii. **Amenities Integration:** The integration of amenities such as covered viewing areas, a pro shop, and a cafe/snack bar enhances the overall visitor experience and promotes social interaction among participants and spectators, aligning with the site planning criteria's emphasis on amenities integration.
- iii. **Community Engagement:** Dallas Karting Complex actively engages with the local community through outreach programs, educational initiatives, and charitable events, contributing to positive community relations and promoting karting as a recreational and competitive sport. This aspect relates to the site planning criteria's consideration of community engagement and involvement in the design and operation of go-kart complexes.

3.4.1.5 Appraisals

Highlighted key design features of the Dallas Karting Complex that could be effectively applied to similar projects include the following:

- i. Accessibility for all users.
- ii. Adequate track configuration.
- iii. Adoption of safety measures.
- iv. Provision of amenities.

3.4.2 Case Study Two - Track House Motorplex



Figure 3.5: Track House Motorplex

Source: (<https://trackhousemotorplex.com/race-now/>)

3.4.2.1 Project Information

The Track House Motorplex, situated in Mooresville, North Carolina, United States, is an impressive outdoor karting facility designed by Studio Dromo and was commissioned in 2012. The track stretches

1,126 meters in length and spans 9 meters in width. It features a challenging layout with eleven (11) strategically placed turns and corners.

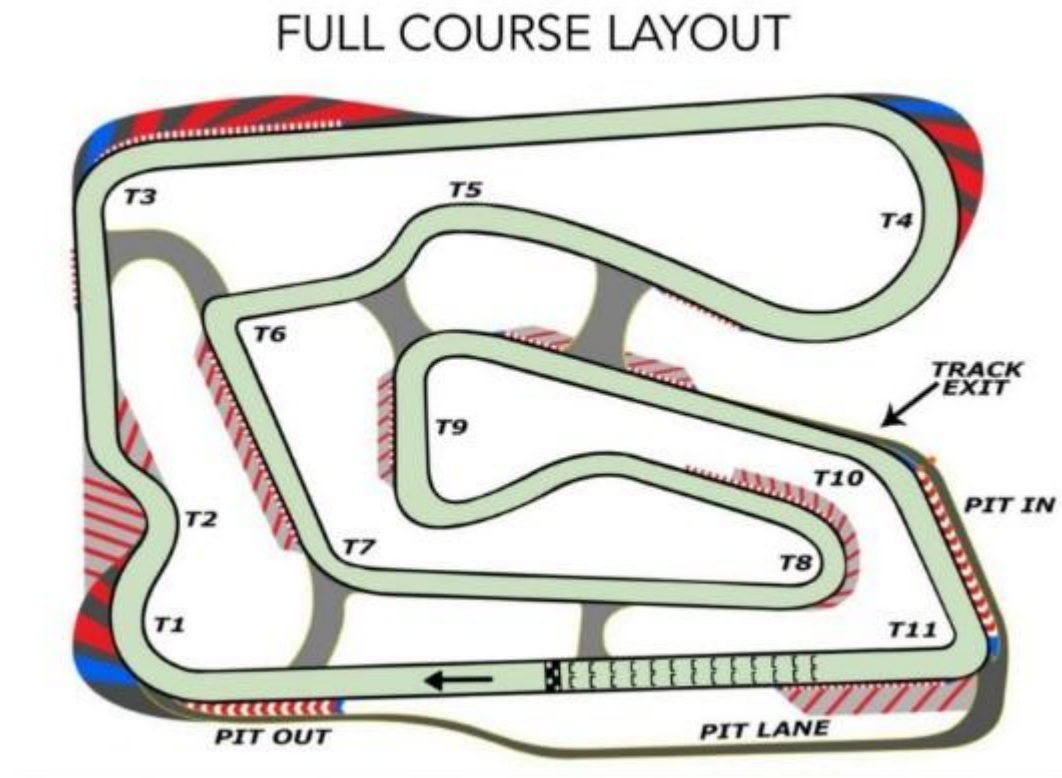


Figure 3.6: Track Layout of Track House Motorplex

Source: (<https://trackhousemotorplex.com/race-now/>)

3.4.2.2 Facility Description

- Modeled after a famous and historic kart track “Kartdromo Parma circuit” in Parma, Italy.
- The complex features a challenging track layout with high-speed straights, technical turns, and elevation changes, providing an exhilarating experience for drivers of all skill levels.
- Spectators can enjoy the action from designated viewing areas and bleachers strategically positioned around the track.
- The Centurion GX390 Karts are engineered specifically for safety, reliability and speed with excellent racing qualities enjoyed by racing enthusiasts around the world.

- In addition to the racing track, Track house Motorplex has a 222/9m² indoor meeting space to accommodate groups of all kinds.



Figure 3.7: Track House Motorplex Go-Karts

Source: (<https://trackhousemotorplex.com/race-now/>)

3.4.2.3 Spatial Accommodations

The facility offers amenities such as track layout, pit area, spectator area, pro shop, snack bar, event spaces for private parties & corporate events and parking facilities.

3.4.2.4 Framework Analysis



Figure 3.8: Track House Motorplex

Source: (<https://trackhousemotorplex.com/race-now/>)



Figure 3.9: Track House Motorplex

Source: (<https://trackhousemotorplex.com/race-now/>)

- i. **Environmental Considerations:** Site planning included strategies to minimize environmental impact, such as erosion control, native landscaping, and stormwater management.
- ii. **Track Design and Safety:** Designing outdoor tracks requires careful consideration of terrain, track surface, and safety barriers to ensure optimal racing conditions and participant safety. As an outdoor facility, Track House Motorplex likely prioritizes track layout to make the most of the natural terrain while ensuring safety. Considerations may include elevation changes, banking on turns, and runoff areas.
- iii. **Spectator Amenities:** Spectator areas, viewing platforms, and amenities such as seating, bleachers, shade structures, and concessions integrated into the site plan to provide spectators with comfortable viewing options while enjoying the outdoor racing experience.

3.4.2.5 Appraisals

Highlighted key design features of the Track House Motorplex that could be effectively applied to similar projects include the following:

- i. Utilization of existing green spaces.
- ii. Environmental sustainability.
- iii. Intuitive navigation.
- iv. Integrated safety features.

3.4.3 Case Study Three - Orlando Kart Center

3.4.3.1 Project Information

The Orlando Kart Center, situated in Orlando, Florida, United States, is an impressive outdoor karting facility which was commissioned in 2009. The track stretches 1,287 meters in length and spans 9 meters in width. It features a challenging layout with twelve (12) strategically placed turns and corners.



Figure 3.10: Orlando Kart Center

Source: (<https://www.orlandomeeting.com/listing/orlando-kart-center/52648/>)

3.4.3.2 Facility Description

- Orlando Kart Center is a renowned outdoor go-kart complex located in the heart of Orlando, Florida.
- The facility features a variety of tracks catering to different skill levels, including a challenging main track for experienced drivers and a junior track for younger participants.
- Safety is a top priority at Orlando Kart Center, with advanced safety barriers, marshals stationed around the track, and thorough safety briefings provided to all drivers.
- Spectators can enjoy the action from shaded viewing areas, while amenities such as a snack bar and arcade add to the overall experience.



Figure 3.11: Orlando Kart Center Go-Karts

Source: (<https://www.orlandomeeting.com/listing/orlando-kart-center/52648/>)



Figure 3.12: Orlando Kart Center Go-Karts

Source: (<https://www.orlandomeeting.com/listing/orlando-kart-center/52648/>)

3.4.3.3 Spatial Accommodation

The facility offers amenities such as track layout, pit area, spectator area, pro shop, café & snack bar, arcade, meeting room/event spaces for private parties & corporate events and parking facilities.

3.4.3.4 Framework Analysis



Figure 3.13: Track Design and Safety of Orlando Kart Center

Source: (<https://www.orlandomeeting.com/listing/orlando-kart-center/52648/>)

- i. **Track Design and Safety:** Orlando Kart Center's site planning prioritizes track design and safety measures, including the layout of multiple tracks catering to different skill levels and the implementation of advanced safety barriers and protocols to ensure a safe racing environment.
- ii. **Amenities Integration:** The facility integrates amenities such as shaded viewing areas, a snack bar, and an arcade to enhance the overall visitor experience, promoting social interaction and providing comfort for spectators.
- iii. **Accessibility and Inclusivity:** Orlando Kart Center's site planning includes provisions for accessibility, ensuring that all visitors, regardless of ability, can participate in and enjoy the karting experience.

3.4.3.5 Appraisals

Highlighted key design features of the Orlando Kart Center that could be effectively applied to similar projects include the following:

- i. Safety and security.
- ii. Innovation and technology.
- iii. Accessibility and Inclusivity.
- iv. Operational efficiency.

3.4.4 Case Study Four - K1 Speed (Outdoor Track)

3.4.4.1 Project Information

The K1 Speed, situated in Carlsbad, California, United States, is an impressive outdoor karting facility designed by Rocky Moran, Jr. and was commissioned in 2022. The track stretches 274 meters in length and spans 9 meters in width. It features a challenging layout with ten (10) strategically placed turns and corners.



Figure 3.14: K1 Speed (Outdoor Track)

Source: (<https://www.k1circuit.com/gallery/>)

3.4.4.2 Facility Description

- K1 Speed is a popular indoor karting chain that also offers outdoor karting at select locations, including the Carlsbad, California facility.
- The outdoor track at K1 Speed Carlsbad features a fast-paced layout with challenging corners and elevation changes, providing an adrenaline-pumping experience for racers.
- Safety is paramount, with state-of-the-art barriers and safety protocols in place.
- The facility also offers amenities making it a popular destination for karting enthusiasts and corporate events alike.

3.4.4.3 Spatial Accommodation

The facility offers amenities such as track layout, pit area, spectator area, café, arcade games, meeting room/event spaces for private & corporate events and parking facilities.

3.4.4.4 Framework Analysis



Figure 3.15: K1 Speed (Outdoor Track)

Source: (<https://www.k1circuit.com/gallery/>)



Figure 3.16: Safety Barrier of K1 Speed (Outdoor Track)

Source: (<https://www.k1circuit.com/gallery/>)

- i. **Track Design and Safety:** The site planning at K1 Speed Carlsbad focuses on track design and safety, with the outdoor track featuring a challenging layout and state-of-the-art safety barriers to provide a thrilling yet safe racing experience for participants.
- ii. **Operational Efficiency:** K1 Speed's site planning emphasizes operational efficiency, with amenities such as a cafe, arcade games, and private event spaces catering to diverse customer needs and maximizing revenue potential within the complex.

3.4.4.5 Appraisals

Highlighted key design features of the K1 Speed Carlsbad that could be effectively applied to similar projects include the following:

- i. Land use efficiency.
- ii. Enhanced user experience.
- iii. Proximity.
- iv. Design flexibility.

3.4.5 Case Study Five - Buckmore Park Kart Circuit

3.4.5.1 Project Information

The Buckmore Park Kart Circuit, situated in Maidstone Road, Chatham, Kent (about 40 miles southeast of central London), is an impressive outdoor karting facility designed by Studio Loci Landscape Architects and was commissioned in 1963. The track stretches 1,1290 meters in length and spans 9 meters in width. It features a challenging layout with thirteen (13) strategically placed turns and corners.



Figure 3.17: Buckmore Park Kart Circuit

Source: (<https://elitekartingseries.co.uk/tracks/buckmore-park>)



Figure 3.18: Aerial View of Buckmore Park Kart Circuit

Source: (<https://elitekartingseries.co.uk/tracks/buckmore-park>)

3.4.5.2 Facility Description

- Buckmore Park Kart Circuit is one of the UK's premier outdoor go-karting venues, widely considered to be one of the best outdoor Karting tracks in the UK.
- Located in the picturesque countryside of Kent (South East of England).
- The outdoor track features a challenging layout with a range of twists, fast straights, technical corners, and elevation changes, providing an exhilarating racing experience for participants.
- The track was extended in 1999 to its current 1200 length although it has a number of different possible circuit layouts.
- The circuit offers a variety of karting experiences for all ages and skill levels, including arrive-and-drive sessions, corporate events, and racing championships.
- The pit lane and pit facilities are next to the major car park at the back of the circuit and this means that the drivers are a little remote from the briefing room, toilets and cafeteria that are situated near the start / finish line.



Figure 3.19: Aerial View of Buckmore Park Kart Circuit

Source: (<https://elitekartingseries.co.uk/tracks/buckmore-park>)



Figure 3.20: Buckmore Park Kart Circuit

Source: (<https://elitekartingseries.co.uk/tracks/buckmore-park>)



Figure 3.21: Track Configuration at Buckmore Park Kart Circuit

Source: (<https://elitekartingseries.co.uk/tracks/buckmore-park>)

3.4.5.3 Spatial Accommodation

The facility offers amenities such as track layout, pit area, spectator area, café, Clubhouse, Briefing Room, changing room, cafeteria & toilets.

3.4.5.4 Framework Analysis

- i. **Track Design and Safety:** Buckmore Park's site planning prioritizes track design and safety, with a well-maintained circuit layout, safety barriers, and marshals ensuring a safe and enjoyable racing environment.
- ii. **Spectator Amenities:** The venue offers amenities such as covered viewing areas, spectator seating, and a cafe/bar, allowing spectators to comfortably enjoy the racing action while socializing with friends and family.
- iii. **Community Engagement:** Buckmore Park actively engages with the local community through school programs, youth karting initiatives, and charity events, fostering positive relationships and promoting karting as a recreational and competitive sport.

3.4.5.5 Appraisals

Highlighted key design features of the Buckmore Park Kart Circuit that could be effectively applied to similar projects include the following:

- i. Rich heritage in motorsport.
- ii. Scenic outdoor track featuring picturesque racing environment.
- iii. Well optimized layout.
- iv. Integration to surrounding landscape.

3.4.6 Case Study Six - Rye House Kart Raceway

3.4.6.1 Project Information

The Rye House Kart Raceway, situated in Hoddesdon, Hertfordshire (about 20 miles north of central London), is an impressive outdoor karting facility which was commissioned in 1934. The track stretches 900 meters in length and spans 9 meters in width. It features a challenging layout with eight (8) strategically placed turns and corners.



Figure 3.22: Rye House Kart Raceway

Source: (<https://www.rye-house.co.uk/race-track-resurfaced/>)



Figure 3.23: Rye House Kart Raceway Aerial View

Source: (<https://www.rye-house.co.uk/race-track-resurfaced/>)

3.4.6.2 Facility Description

- Rye House Kart Raceway is a popular outdoor karting venue located just outside of London.
- The circuit is one of the oldest in the country
- The complex features multiple outdoor tracks catering to various skill levels and age groups, including a challenging international circuit and a dedicated junior track for younger drivers.
- The venue hosts a range of karting events, from casual arrive-and-drive sessions to competitive racing leagues and corporate events.
- Rye House Kart Raceway is known for its professional facilities, well-maintained tracks, and experienced staff, making it a favorite destination for karting enthusiasts and professional racers alike.



Figure 3.24: Rye House Kart Raceway

Source: (<https://www.rye-house.co.uk/race-track-resurfaced/>)

3.4.6.3 Spatial Accommodation

The facility offers amenities such as track layout, pit area, spectator area, cafeteria, café & bar, conference facilities, meeting rooms, toilets & shower facilities.

3.4.6.4 Framework Analysis



Figure 3.25: Rye House Kart Raceway Track

Source: (<https://www.rye-house.co.uk/race-track-resurfaced/>)

- i. **Track Design and Safety:** Rye House Kart Raceway prioritizes track design and safety, with carefully designed circuits, safety barriers, and trackside marshals ensuring a safe and enjoyable racing experience for participants.
- ii. **User Experience:** The venue offers amenities such as covered spectator areas, hospitality suites, and a cafe/bar, enhancing the overall customer experience and promoting social interaction among participants and spectators.
- iii. **Community Engagement:** Rye House Kart Raceway actively engages with the local community through outreach programs, school partnerships, and charity fundraisers, contributing to positive community relations and promoting karting as a family-friendly recreational activity.

3.4.6.5 Appraisals

Highlighted key design features of the Rye House Kart Raceway that could be effectively applied to similar projects include the following:

- i. Standard track configuration.
- ii. Adoption of safety measures.
- iii. Provision of amenities.
- iv. Operational efficiency.

3.4.7 Case Study Seven - Bush Riders Go-Karting

3.4.7.1 Project Information

The Bush Riders Go-Karting, situated in River Plate Park, Kur Mohammed, Abuja, Nigeria, is an impressive outdoor karting facility. The track stretches 500 meters in length and spans 6 meters in width.

3.4.7.2 Facility Description

- The outdoor track features challenging elements such as hairpin turns, banked corners, and straightaways, providing an exciting racing experience for participants of all ages.
- The facility offers state-of-the-art amenities and well-maintained tracks.
- A safe haven for racing in a safe and controlled environment.



Figure 3.26: Bush Riders Go-Karting

Source: (<https://nigeria.tortoisepath.com/place/bush-riders-go-karting/>)



Figure 3.27: Bush Riders Go-Karting Track Configuration

Source: (<https://nigeria.tortoisepath.com/place/bush-riders-go-karting/>)

3.4.7.3 Spatial Accommodation

The facility offers amenities such as track layout, seating area, a pro shop, café/snack bar, toilets & shower facilities.

3.4.7.4 Framework Analysis



Figure 3.28: Bush Riders Go-Karting Track Configuration

Source: (<https://nigeria.tortoisepath.com/place/bush-riders-go-karting/>)

- i. **Track Layout and Safety:** Site planning involves designing tracks with varied features to challenge drivers while incorporating safety measures such as barriers and runoff areas.
- ii. **Environmental Impact:** Implementing sustainable practices such as landscaping with native plants and minimizing stormwater runoff mitigates the facility's environmental footprint.
- iii. **Operational Efficiency:** Layout optimized for efficient traffic flow and operational functionality.

3.4.7.5 Appraisals

Highlighted key design features of the Bush Riders Go-Karting that could be effectively applied to similar projects include the following:

- i. Smooth traffic flow.
- ii. Preservation and integration of green spaces.
- iii. Provision of safety infrastructure.

3.4.8 Case Study Eight – Go Kart Arena (Pentorise)

The Go Kart Arena (Pentorise), situated in Bodija, Ibadan, Oyo state, Nigeria, is an impressive outdoor karting facility. The track used is a repurposed asphalt filled space for outdoor events and parking when facility is congested.



Figure 3.29: Picture Showing Go-Karts at Go Kart Arena (Pentorise)

Source: (<https://meiza.ng/five-places-you-must-experience-in-ibadan/>)

3.4.8.1 Facility Description

- Located at Independence Square, Awolowo Road, Bodija, Ibadan, Oyo State, Nigeria.
- A Recreational and event center standing as Central attraction offering go-karting activities with safety equipment provided.

- Equipped with spaces for various video games, board games, catering to different age groups and suitable for group activities.
- Lively and family-friendly environment, suitable for both adults and children.
- On-site dining options, Multiple halls & Ample parking space, making it convenient for visitors and event attendees.



Plate 3.1: Picture Showing Safety Barrier at Go Kart Arena (Pentorise)

Source: Field work (2024)

3.4.8.2 Framework Analysis

- i. **Location and Accessibility:** Easy access from major roads and proximity to target demographics. This prime location near a major road ensures high visibility and accessibility for visitors, aligning well with site planning criteria that emphasize ease of access .
- ii. **Spatial Organization:** The arena integrates multiple activities such as go-karting, and video gaming within a single complex. This multi-functional use of space maximizes the site's

potential and enhances user experience by providing diverse entertainment options. The inclusion of event halls and ample parking further supports a well-organized spatial layout .

- iii. **User Experience and Comfort:** The arena’s vibrant atmosphere, coupled with facilities like a bar and restaurant, ensures that visitors have a comfortable and enjoyable time. The design of the interior spaces, including event halls with air conditioning, contributes to a comfortable environment .
- iv. **Parking and Circulation:** The facility provides ample parking space, which is crucial for accommodating the influx of visitors, especially during events. The strategic layout ensures smooth internal circulation, reducing congestion and enhancing the overall visitor experience
- v. **Flexibility and Adaptability:** The Pentorise Go Kart Arena’s ability to host diverse activities and events showcases its flexibility. This adaptability is a key component of effective site planning, ensuring that the facility can cater to changing needs and future growth .



Plate 3.2: Picture Showing the Track Layout at Go Kart Arena (Pentorise)

Source: Field work (2024)

3.4.8.3 Appraisals

Highlighted key design features of the Go Kart Arena that could be effectively applied to similar projects include the following:

- i. Strategic Location and accessibility of Amenities.
- ii. Multi-functional use of space.
- iii. User safety and comfort.
- iv. Amenities of services provided.



Plate 3.3: Picture Showing the Safety Barrier at Go Kart Arena (Pentorise)

Source: Field work (2024)

A number of shortcomings were identified from the analysis of the Go Kart Arena. These shortcomings include:

- i. Lack of technology integration.

- ii. Temporary track layout.
- iii. Deficient barrier protection.
- iv. Inadequate spectator amenities.
- v. Poor landscape integration.

3.5 Case studies Adoptions

The proposed go-kart complex design will incorporate the following pivotal design elements and considerations derived from the analysis of the case studies.

1. Accessibility & inclusivity.
2. Innovation & technology.
3. Wayfinding and signages.
4. Provision of adequate amenities.
5. Safety & security features.
6. Layout optimization.
7. Preservation & integration of green spaces.
8. Design Adaptability and flexibility.
9. Adherence to standard facility configuration.
10. Operational efficiency.
11. Facility Proximity.
12. Aesthetic.

Chapter Four

Site Analysis and Design Synthesis

4.1 The Study Area

Oyo State, located in the southwestern part of Nigeria, is one of the 36 states of the country. It is known for its rich cultural heritage, historical significance, and economic activities. The state capital is Ibadan, which is also the largest city in the state and one of the most populous cities in Africa. Oyo State covers an area of approximately 28,454 square kilometers. It is bordered by Kwara State to the north, Osun State to the east, Ogun State to the south, and the Republic of Benin to the west. The state features a mix of savannah and rainforest, providing a diverse ecosystem.

The climate is tropical, with a distinct wet and dry season. The wet season typically spans from April to October, while the dry season lasts from November to March. Average annual rainfall varies between 1,200 mm in the southern parts to about 1,000 mm in the northern parts. Temperatures range from an average high of 31°C (88°F) to a low of 21°C (70°F). The predominant ethnic group is the Yoruba, and Yoruba is the most widely spoken language. The people of Oyo State are known for their rich cultural traditions, including festivals, music, dance, and art. The state is also home to several historical landmarks, such as the ancient Oyo Empire, which played a significant role in the history of the Yoruba people. Oyo State has a diverse economy with agriculture being a major sector.

Ibadan, the capital city of Oyo State, is the third most populous city in Nigeria, following Lagos and Kano. As a key cultural, economic, and educational hub, Ibadan spans approximately 3,080 square kilometers and is home to over 3 million people. The city is supported by a well-developed infrastructure network, and its economy is diverse, with substantial contributions from agriculture, commerce, and industry. Ibadan is also rich in cultural and recreational attractions, including notable tourist sites such as Agodi Gardens, a popular park known for its serene environment; the University of

Ibadan Zoological Garden, which houses a variety of animal species; Cocoa House, the first skyscraper in West Africa; and Bower's Tower, a historical monument that offers panoramic views of the city. Given its population, economic activity, and vibrant recreational landscape, Ibadan presents a promising location for a go-kart complex with proper planning and execution.

4.1.1 Site Location

The site of the Proposed Go-Kart Complex is located beside Agodi Gardens, Ibadan, Oyo State.



Plate 4.1: Picture Showing Site Location

Source: Field work (2024)



Plate 4.2: Picture Showing Site Location (Blow Out)

Source: Field work (2024)

4.1.2 Site Selection Criteria

Selecting an ideal site for a go-kart complex is crucial, as it involves assessing various factors to significantly influence the facility's functional use and overall success. To determine the most suitable site, it was evaluated based on the following selection criteria:

i. Accessibility

- a) Proximity to Major Roads:** The site is located near major road networks, ensuring easy access for visitors coming from different parts of the city and beyond.
- b) Public Transport:** The area is well-served by public transportation, including buses and taxis, which makes it convenient for a broad demographic of visitors.

ii. Demographics and Market Potential

- a) **Population Density:** Agodi Gardens is situated in a densely populated area of Ibadan, which ensures a substantial local customer base.
- b) **Target Audience:** The location is frequented by families, young adults, and tourists, aligning well with the typical demographic interested in go-karting activities.

iii. Existing Infrastructure

- a) **Parking Facilities:** Agodi Gardens already has established parking facilities, which can accommodate the expected increase in visitors to the go-kart complex.
- b) **Utilities and Amenities:** The site is equipped with essential utilities such as electricity, water supply, and sanitation facilities, reducing the initial setup costs.

iv. Complementary Attractions

- a) **Synergy with Agodi Gardens:** The gardens offer a range of activities such as picnicking, horse riding, and other recreational pursuits, providing a holistic entertainment experience. The addition of a go-kart complex will enhance the overall appeal of the destination.
- b) **Tourist Attraction:** As a well-known tourist site, Agodi Gardens attracts a significant number of visitors, both locals and tourists, increasing the footfall for the go-kart complex.

v. Environmental and Social Considerations

- a) **Environmental Impact:** The area within Agodi Gardens can be assessed for minimal environmental disruption. Proper planning can ensure the preservation of green spaces and compliance with environmental regulations.

- b) **Community Support:** Engaging with the local community and stakeholders can ensure support for the project, addressing any concerns and highlighting the benefits of increased tourism and job opportunities.

vi. **Economic Viability**

- a) **Cost of Land and Development:** The cost of developing the go-kart complex within Agodi Gardens is likely to be lower compared to acquiring and developing a completely new site. Leveraging existing infrastructure can also reduce expenses.
- b) **Revenue Potential:** The location's high visitor traffic and established reputation suggest strong revenue potential from ticket sales, concessions, and events.

vii. **Safety and Security**

- a) **Safe Environment:** Agodi Gardens is known for its safe and family-friendly environment, making it an ideal location for a recreational facility like a go-kart complex.
- b) **Emergency Services:** Proximity to hospitals, fire stations, and police services ensures that any emergencies can be promptly addressed, ensuring visitor safety.

viii. **Regulatory and Zoning Compliance**

- a) **Zoning Laws:** The proposed location within Agodi Gardens must comply with local zoning regulations for recreational and commercial activities. Preliminary assessments indicate that this area is suitable for such developments.
- b) **Government Support:** Collaborating with local government authorities can facilitate the necessary approvals and support for the project, ensuring a smooth development process.

4.1.3 Site Analysis



Plate 4.3: Site Analysis

Source: Field work (2024)

The site plays a pivotal role in any design proposal, significantly influencing the project's tangible development and ultimate outcome. Its environmental and geographical features, including micro-climate, topography, temperature, humidity, and vegetation, are critical determinants of its suitability. Factors such as proximity to water bodies, access points, existing vegetation, local climate conditions, and utility infrastructure profoundly shape the layout of the building. Additionally, the site's adjacency to surrounding features impacts the design's aesthetics, functional layout, and economic feasibility. Conducting a thorough site analysis ensures that the design aligns seamlessly with its objectives,

effectively integrating with the site's natural and built environment while reflecting and enhancing its unique characteristics.

i. Site Accessibility

The selected site offers optimal accessibility for both vehicular and pedestrian traffic strategically situated at Agodi gardens in Ibadan, it benefits from its proximity to major roads and connectivity with the city's transportation network enhancing convenience.

ii. Proximity to Public Utilities

The site has access to essential infrastructure, ensuring operational efficiency, including well-maintained roads, reliable electricity supply, potable water systems, advanced telecommunications, and full-bodied security arrangements.

iii. Drainage and Topography

Characterized by a steep slope, the site's topography minimizes the necessity for extensive land alterations, thereby reducing construction costs and facilitating efficient site development. Design considerations will include strategic management of rainwater flow to designated collection points, ensuring effective drainage and sustainable water management practices.

iv. Vegetation

The site is densely covered with a variety of vegetation, including tall grasses, shrubs, and large trees. While preserving the natural landscape's integrity, necessary clearing will prepare the area for construction activities capitalizing on the site's greenery.

v. Soil Condition

With a foundation of firm laterite soil, the site offers ideal conditions for construction and landscaping endeavors. The absence of rocky formations further underscores the site's suitability for sustainable development initiatives.

vi. Wind Direction

The site is influenced by prevailing north-east and south-west trade winds, the site experiences distinct varying climatic conditions. Design strategies will optimize natural ventilation to capitalize on these wind patterns, promoting airflow throughout the complex and minimizing reliance on mechanical cooling systems.

vii. Sunlight and Temperature

Efficient solar gain and temperature management are critical for powering and maintaining the go-kart complex. The strategic orientation of buildings will mitigate excessive heat gain, while strategically positioned solar panels maximize the capture of solar radiation throughout the day.

viii. Water Bodies

The presence of water bodies at the proposed site is a significant asset as it enriches its environment, offering aesthetic beauty, recreational opportunities, and potential micro-climatic benefits. Careful integration into the design ensures sustainability and enhances an engaging environment while preserving ecological integrity.

4.2 Project Analysis and Design Synthesis

4.2.1 Brief Analysis

Ibadan, as one of Nigeria's largest cities and a major economic hub in Oyo State, is experiencing rapid urbanization and population growth. The city's expansion has intensified the demand for accessible and engaging leisure facilities. Existing recreational options often struggle to meet the diverse needs of

Ibadan's residents, particularly in providing high-quality, family-friendly entertainment as they lack the modern amenities and safety standards expected by residents and visitors alike.

This gap in recreational offerings underscores the opportunity to introduce a go-kart complex that not only fulfills the city's entertainment needs but also contributes positively to its social and economic landscape. The popularity of go-karting, known for its adrenaline-pumping experience and suitability for various age groups, presents a compelling opportunity to capture this market demand effectively.

The project will focus on optimizing land use within a centrally located site in Ibadan. By integrating innovative and modern amenities, the complex aims to set a new standard in recreational facilities in Oyo State.

4.2.2 Brief Development

In reviewing seven case studies within this study, several common shared spaces consistently emerged. These spaces were meticulously analyzed to determine their required standards and specific functions within the framework of a go-kart complex. These spaces include:

- | | |
|-------------------|-------------------------------------|
| i. Track Layout | ii. Kart Storage & Maintenance Area |
| iii. Pit Area | iv. Ancillary & Support Facilities |
| v. Spectator Area | vi. Safety Buffer Zone |

4.2.3 Design Considerations

In the design of proposed mixed-use development in Muri Okunola, Victoria Island, Lagos, meticulously incorporated a range of design considerations to ensure a holistic, sustainable, and user-centric environment. Here's how each consideration was integrated:

i. Security

- a) Implementing robust security measures such as perimeter fencing, CCTV surveillance, and controlled access points to ensure the safety of visitors and staff.
 - b) Designing clear emergency exits and procedures, and integrate lighting for nighttime security.
- ii. Aesthetics**
- a) Creating a visually appealing facade and interior design that reflects the excitement and dynamic nature of go-karting.
 - b) Using vibrant colors and modern architectural elements to enhance the overall experience.
- iii. Accessibility**
- a) Ensuring easy access for all visitors, including those with disabilities, through ramps, elevators, and designated parking spaces.
 - b) Designing pathways and entrances that are clear and spacious to accommodate high visitor traffic.
- iv. Wind Orientation**
- a) Orientating the building and outdoor areas to minimize wind impact on the tracks and spectator zones.
 - b) Considering windbreaks or landscaping features to mitigate wind effects on the racing experience.
- v. Safety**
- a) Prioritize safety with well-designed tracks, barriers, and safety zones that meet or exceed industry standards.
 - b) Providing adequate signage, safety briefings, and trained staff to oversee operations.
- vi. Landscape Integration**

- a) Integrating landscaping elements such as green spaces, trees, and natural features to enhance the overall ambiance and environmental sustainability.
- b) Using landscaping to buffer noise, improve air quality, and create attractive outdoor seating areas.

vii. Functionality

- a) Designing the layout to optimize operational efficiency, with clear divisions between racing tracks, pit areas, spectator zones, and support facilities like cafes and restrooms.
- b) Ensuring flexibility in layout to accommodate various racing configurations and event setups.

viii. Color & Material Selection

- a) Choosing durable materials that can withstand high traffic and frequent use, such as high-quality flooring and seating options.
- b) Using colors that are energetic and promote a sense of excitement, while also considering maintenance requirements.

ix. Circulation

- a) Planning for efficient circulation paths for visitors, staff, and emergency services, minimizing congestion during peak times.
- b) Designating separate paths for pedestrians and service vehicles to ensure smooth operation.

x. Environmental Comfort/Climate Responsiveness

- a) Incorporating shading devices, natural ventilation strategies, and climate control systems to ensure comfort for visitors throughout the year.
- b) Using sustainable building materials and energy-efficient systems to reduce environmental impact.

xi. Adaptability

- a) Designing the complex with modular or flexible spaces that can adapt to future technological advancements or changes in user preferences.
- b) Allowing for phased expansions or modifications to accommodate growth and evolving needs.

xii. Wayfinding

- a) Implementing clear signage, maps, and digital displays to guide visitors to different areas within the complex.
- b) Ensuring intuitive wayfinding to enhance visitor experience and reduce confusion.

These considerations aim to create a well-rounded design for a go-kart complex that prioritizes safety, functionality, sustainability, and an engaging visitor experience.

4.2.4 Conceptual Development

The guiding concept of "curves" forms the foundation of the go-kart complex design, reflecting the natural fluidity of movement integral to both racing and human experience. Curves convey continuity, softness, and rhythm, embodying the dynamism of speed and motion. By embracing curves, the design creates a harmonious flow, not only aesthetically but also functionally, leading to an engaging and lively environment. This approach aligns with a deeper psychological response, curved forms are often perceived as more inviting and energetic compared to rigid, angular shape, encouraging interaction and exploration. Inspired by nature's curved designs from flowing rivers to rolling hills creating a visual language, the complex integrates these forms to mirror the pulse of go-karting. Ultimately, the goal is for the entire complex to exude energy, fluidity, and excitement, creating a space that not only reflects but amplifies the thrill of motion, leaving visitors with an immersive and memorable experience.

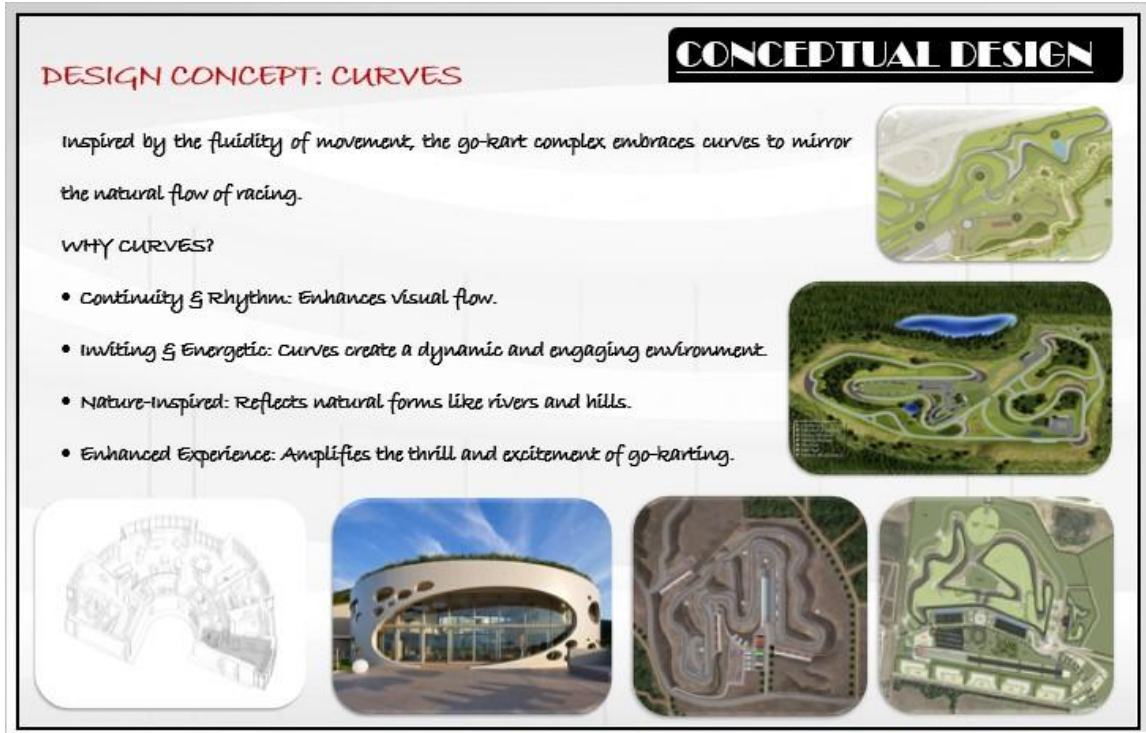


Plate 4.4: Conceptual Design

Source: Field work (2024)

4.2.5 Functional Relationship

The functional relationship chart clarifies the connections between various spaces within the facility. This visual mapping helps designers promptly identify interconnected areas and isolated ones. It enables strategic placement of related spaces close to each other while ensuring unrelated spaces are appropriately isolated. Moreover, the chart aids in zoning decisions and optimizes design functionality by ensuring spaces are logically and efficiently organized.

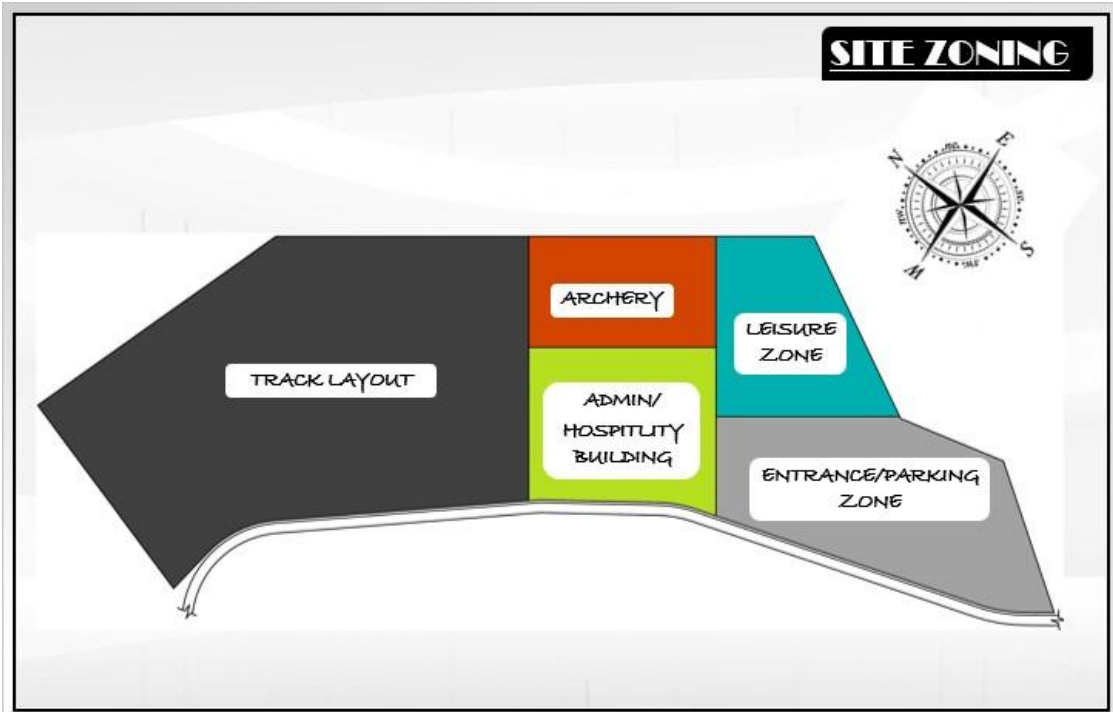


Plate 4.5: Site Zoning

Source: Field work (2024)

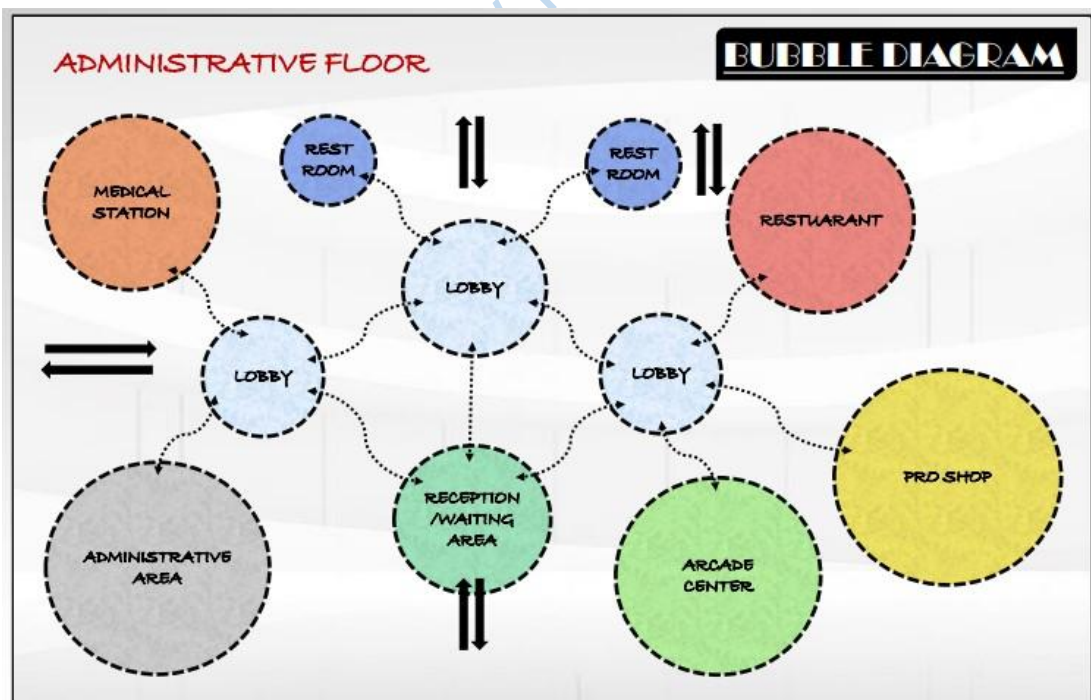


Plate 4.6: Bubble Diagram

Source: Field work (2024)

4.2.6 Space Allocation/Schedule of Accommodation

SPACE PROVISIONS		SPATIAL REQUIREMENTS	
Administrative Floor		On Site	
• Reception		• Administrative Building	
• Offices		• Hospitality (Accommodation)	
• Conference room		• Spectator Area	
• First aid station	• Pro shop	• Kart Storage	• Track Layout
	• Cafeteria		• Archery Range
	• Arcade center		• Leisure Area
	• Conveniences		• Parking Facilities

Plate 4.7: Spatial Requirements

Source: Field work (2024)

Table 4.1: Spatial Program

Source: Field work (2024)

ON SITE SPACE PROVISIONS			SPATIAL PROGRAM
S/N	SPACES	PURPOSE	AREA(m ²)
1	Administrative Building	Manage operations, customer service, and staff facilities.	2185m ²
2	Hospitality	Provide lodging and accommodation for visitors.	2185m ²
3	Spectator Area	viewing area for races and events.	1083m ²
4	Kart Storage & Track Layout	Store and maintain go-karts; design of track.	72,781m ²
5	Archery Range	Provide space for archery practice.	13,024m ²
6	Leisure Area	Recreational and relaxation space.	15,879m ²
7	Parking Facilities	Provide parking for visitors and staff.	27,511m ²

4.2.7 Construction Methods and Materials

The construction methods and materials utilized for the different elements of the complex are delineated as follows:

i. Foundation and Structure

- a) Use of reinforced concrete for the foundation to ensure stability and withstand heavy loads from the racing tracks and spectator areas.
- b) Steel framing for the main structure to provide flexibility in layout design and structural integrity.

ii. Exterior Cladding

- a) Opted for durable and weather-resistant materials such as metal panels or high-quality composite cladding to protect against the elements and minimize maintenance needs.
- b) Use of architectural features and color schemes that reflect the energetic and dynamic nature of go-karting, enhancing the visual appeal of the complex.

iii. Roofing System

- a) High-performance roofing system with insulated panels to regulate internal temperatures and reduce energy consumption.
- b) Considered skylights or solar panels to maximize natural light and promote sustainability.

iv. Interior Finishes

- a) Utilization of flooring materials that are slip-resistant and easy to maintain, such as epoxy coatings for pit lanes and durable vinyl tiles for spectator zones.
- b) Use of acoustic treatments in indoor spaces to minimize noise levels and create a comfortable environment for visitors and staff.

v. Track Construction

- a) Construction of the racing tracks using specialized asphalt or concrete mixtures designed for high-performance sports surfaces, ensuring optimal grip and durability.
- b) Incorporating safety barriers and runoff areas around the tracks to enhance safety for both drivers and spectators.

vi. Structural Elements

- a) Application of steel and reinforced concrete columns and beams for support and stability throughout the complex.
- b) Inclusion of seismic design principles where applicable to enhance structural resilience.

vii. Exterior Landscaping and Site Works

- a) Use of landscaping elements strategically to enhance the aesthetic appeal and environmental sustainability of the site.
- b) Paved areas and designated parking spaces designed to withstand heavy vehicle traffic.

viii. Facade Design

- a) Mix of materials and textures on the facade to create visual interest and complement the overall theme of the complex.
- b) Facade elements are integrated seamlessly with functional requirements such as ventilation and lighting.

4.2.8 Building Services

4.2.8.1 Heating, Ventilation, and Air Conditioning (HVAC) and Mechanical Systems

- i. Climate Control:** HVAC systems with zoning capabilities to regulate temperature and humidity levels in different areas of the complex.

- ii. **Ventilation:** Mechanical ventilation systems to ensure adequate air circulation in enclosed spaces, such as briefing rooms and pit areas.
- iii. **Energy Efficiency:** HVAC designs for energy efficiency, potentially integrating heat recovery systems or variable air volume (VAV) controls.

4.2.8.2 Electrical Systems

- i. **Lighting:** Energy-efficient LED lighting throughout the complex, including the racing tracks, spectator areas, and facilities. Use lighting controls for different zones to optimize energy use.
- ii. **Power Supply:** Sufficient power distribution systems to support the complex's operational needs, including kiosks, cafes, and administrative offices.
- iii. **Emergency Power:** Backup power systems to ensure continuous operation during power outages.

4.2.8.3 Plumbing and Sanitary Systems

- i. **Water Supply:** Reliable water supply system for drinking, firefighting, and sanitary purposes, with efficient water fixtures to conserve water.
- ii. **Drainage:** Effective drainage systems to manage stormwater and wastewater, ensuring compliance with environmental regulations.
- iii. **Sanitary Facilities:** Adequate restroom facilities throughout the complex, including accessible options for visitors with disabilities.

4.2.8.4 Fire Protection and Life Safety Systems

- i. **Fire Suppression:** Automatic fire sprinkler systems and fire alarms throughout the complex to ensure early detection and suppression of fires.
- ii. **Emergency Evacuation:** Clear evacuation routes and emergency exits with illuminated exit signs for safe evacuation during emergencies.

- iii. **Smoke Control:** Smoke control systems in enclosed spaces to maintain visibility and facilitate safe evacuation.

4.2.8.5 Communications and Security Systems

- i. **Surveillance:** CCTV cameras and security monitoring systems to enhance surveillance and deter unauthorized access.
- ii. **Access Control:** Access control measures, including card readers or biometric systems, to restrict entry to sensitive areas.
- iii. **Communication Infrastructure:** Communication networks, including Wi-Fi connectivity and public address systems, for effective information dissemination and guest services.

4.2.8.6 Technology Integration

- i. **Audiovisual Systems:** Audiovisual systems in briefing rooms and event spaces for presentations and entertainment purposes.
- ii. **Ticketing and Reservation Systems:** Integrated ticketing and reservation systems to streamline visitor management and enhance customer experience.
- iii. **Data Management:** Data infrastructure to support online booking platforms, customer databases, and operational analytics.

4.2.8.7 Sustainability and Energy Management

- i. **Energy Efficiency:** Systems for energy monitoring and management to optimize energy use and reduce operational costs.
- ii. **Renewable Energy:** Renewable energy sources such as solar panels or wind turbines to supplement power supply.
- iii. **Waste Management:** Recycling programs and waste reduction strategies to minimize environmental impact during operation.

- iv. **Rainwater harvesting systems** for irrigation and low-flow plumbing fixtures to conserve water.

4.2.8.8 Accessibility and Universal Design

- i. **Universal Access:** Accessible to visitors of all abilities, including wheelchair accessibility, tactile signage, and audible alerts.
- ii. **Inclusive Design:** Usability and comfort for diverse user demographics.

Lead City University Ibadan DO NOT COPY

Chapter Five

Conclusion and Recommendation

5.1 Project Appraisal

The development of a go-kart complex requires meticulous design and planning that involve multiple criteria that ensure the facility is functional, safe, and attractive to users. This appraisal evaluates the findings from the previous chapters, highlighting the strengths of the project, and provides a holistic understanding of the design criteria that are crucial for developing a successful go-kart complex. The research identified several key criteria essential for effective site planning of go-kart complexes. These criteria include:

I. Site Selection and Location

- a) **Accessibility:** Choosing a site near major roads and urban centers to attract visitors.
- b) **Topography:** Opting for gently sloping terrain for effective drainage and track construction.
- c) **Environmental Impact:** Minimizing ecological disruption and complying with environmental regulations.

II. Track Design

- a) **Safety Standards:** Implementing vigorous safety measures like barriers and clear visibility.
- b) **Variety and Complexity:** Designing tracks with diverse features to cater to drivers of all skill levels.

c) **Material Selection:** Using durable, low-maintenance materials for track longevity.

III. Ancillary & Support Facilities

a) **Pit and Maintenance Area:** Providing ample space for kart storage and maintenance.

b) **Spectator Areas:** Creating comfortable viewing spots for spectators.

c) **Amenities:** Including restrooms, food services, and sufficient parking for visitor convenience.

d) **Administrative facilities:** office, conference rooms, reception area, retail shop and control room.

IV. Sustainability

a) **Energy Efficiency:** Incorporating renewable energy sources and energy-efficient lighting.

b) **Waste Management:** Implementing recycling and waste reduction strategies.

c) **Water Management:** Using effective drainage and rainwater harvesting systems.

V. Regulatory Compliance

a) **Local Zoning Laws:** Adhering to zoning regulations and obtaining necessary permits.

b) **Safety Regulations:** Complying with safety standards to ensure a secure environment.

c) **Noise Control:** Implementing measures to minimize noise impact on the community.

5.1.1 Strengths of the Project

1. Strategic site selection and accessibility planning.
2. Innovative track design prioritizing safety and user experience.
3. Strong commitment to sustainability and environmental compliance.
4. Well-designed support facilities enhancing overall visitor satisfaction.

5.2 Conclusion

The site planning criteria for a go-kart complex, as outlined in this project, provide a robust framework for developing a premier facility. By focusing on accessibility, safety, sustainability, and regulatory compliance, the project lays a solid foundation for success. The project's strengths, particularly in track design and sustainable practices, highlight its potential to deliver an outstanding user experience while minimizing environmental impact. With further attention to financial feasibility and environmental assessment, the project can be even more compelling and impactful.

Furthermore, the research underscores the importance of interdisciplinary collaboration between urban planners, architects, engineers, and environmental specialists in optimizing site selection and design. This holistic approach mitigates potential challenges and maximizes the benefits of go-kart complexes within their respective urban or rural contexts.

5.3 Recommendations

Based on the findings, the following recommendations are proposed:

- I. Comprehensive Site Evaluation:** Develop clear guidelines for selecting sites based on connectivity and future needs.
- II. Enhanced Environmental Assessment:** Conduct a thorough Environmental Impact Assessment (EIA) to ensure minimal ecological disruption and uphold environmental standards.
- III. Advanced Design Technologies:** Use technology to visualize and optimize track layouts.
- IV. Sustainability Practices:** Incorporate eco-friendly designs and renewable energy.
- V. Phased Track Design Approach:** Implement a phased approach to track design to cater to both novice and experienced drivers.
- VI. Comprehensive Financial Feasibility Study:** Undertake detailed cost-benefit analysis to ensure economic viability across construction, maintenance, and operations.

VII. Continued Research and Innovation: Encourage further research into emerging and adaptive reuse of existing spaces for go-kart facilities.

Implementing these recommendations will advance the design and functionality of go-kart complexes, making them integral parts of urban development and recreational infrastructure.

References

107.3 Kiss FM Texas, (n.d.). *Fastest go-karts in Texas*. Retrieved June 9, 2024, from <https://1073kissfmtexas.com/fastest-go-karts-in-texas/>

Adams, R., & Chen, L. (2020). Assessing water supply needs for recreational facilities. *Water Resources Management*, 34(5), 1523-1537. <https://doi.org/10.1007/s11269-020-02678-0>

Allen, B., & King, L. (2023). Impact of recreational facilities on residential areas. *Urban Affairs Review*, 59(1), 97-112. <https://doi.org/10.1177/10780874221107973>

Alexander, C., Ishikawa, S., & Silverstein, M. (1977). *A pattern language: Towns, buildings, construction*. Oxford University Press.

American National Standards Institute. (2021). Fire alarm systems. *ANSI*.

American Lung Association. (2023). Clean air and emissions. *American Lung Association*. Retrieved from <https://www.lung.org>

American Planning Association. (2021). *The Principles of Site Planning and Urban Design*. APA.

American Red Cross. (2023). Fire safety. *American Red Cross*. Retrieved from <https://www.redcross.org>

- American Society for Testing and Materials. (2022). Standard specifications for asphalt and concrete. *ASTM International*.
- American Society of Civil Engineers. (2020). Structural safety standards for construction. *ASCE Press*.
- Anderson, B., Thompson, R., & Edwards, L. (2021). Infrastructure planning for sports complexes: Key considerations for go-kart tracks. *Journal of Sports Facility Design*, 11(3), 122-137.
- Anderson, J., & Vavra, M. (2021). Sustainable site planning for recreational facilities. *Green Design Press*.
- Anderson, T. (2020). Reducing emissions in recreational motorsports. *Environmental Impact Journal*, 15(2), 101-115.
- Andrews, C., & Chang, L. (2022). Navigating zoning changes: Case studies and best practices. *Journal of Urban Planning*, 58(2), 112-126.
- Architectural Digest. (2021). Circulation in architectural design. *Architectural Digest*. Retrieved from <https://www.architecturaldigest.com>
- Baker, J., & Thorne, D. (2023). Surface materials for motor racing tracks: A performance and durability review. *Journal of Surface Engineering and Motorsport Design*, 28(3), 101-119.
- Bates, J., & Jenkins, M. (2021). Site safety considerations for go-kart complex design. *Safety Science Review*, 39(3), 210-223.
- Bennett, A. (2020). Designing the modern race track: Safety, speed, and sustainability. *New York, NY: Urban Design Publications*.

- Berke, P. R., & Campanella, T. J. (2023). *Sustainable Development: A Planning Perspective*. Springer.
- Bohman, H., & Nilsson, D. (2021). Urban planning, land use, and sustainability: Strategies for urban growth. *Land Use Policy*, 108, 105239. <https://doi.org/10.1016/j.landusepol.2021.105239>
- Brown, T. (2023). Indoor go-kart complexes: Designing for leisure and safety. *Recreation Today*, 45(1), 22-31.
- Bureau of Justice Assistance. (2021). Video surveillance systems. *U.S. Department of Justice*. Retrieved from <https://www.bja.ojp.gov>
- Calthorpe, P., & Fulton, W. (2022). *The Regional City: Planning for the End of Sprawl*. Island Press.
- Carson, A., & Waller, S. (2022). Cost management in recreational complex development. *International Journal of Facility Management*, 34(4), 311-326.
- Chen, J. (2020). Traffic flow management in motorsport complexes: Planning for efficiency and safety. *Journal of Urban Traffic Planning*, 19(2), 64-80.
- Chen, Q., & Wu, S. (2022). The role of infrastructure in site planning. *Planning Horizons*, 34(3), 110-121.
- Cohen, M., & Harrison, T. (2022). *Sport facility management: Trends and strategies for design*. London, UK: Routledge.
- Davies, R. (2020). Zoning and site planning in urban development. *Urban Affairs*, 42(4), 88-104.
- Disability Rights Education & Defense Fund. (2020). Accessibility guidelines. *DREDF*. Retrieved from <https://www.dredf.org>

- Doran, T., & Pringle, C. (2023). Designing spectator seating for high-capacity events: Safety, comfort, and accessibility. *Event Management Journal*, 27(4), 430-442. <https://doi.org/10.3727/152599523123123402>
- Elite Karting Series, (n.d.). *Buckmore Park*. Retrieved April 19, 2024, from <https://elitekartingseries.co.uk/tracks/buckmore-park>
- Environmental Law Institute. (2023). Pollution control strategies and compliance measures. *ELI Publications*.
- Environmental Protection Agency. (2022). Environmental impact assessments and compliance for industrial facilities. *EPA Press*.
- Environmental Protection Agency. (2023). Environmental permitting and compliance strategies. *EPA Reports*.
- Environmental Protection Agency. (2022). Noise pollution and its control. *EPA*. Retrieved from <https://www.epa.gov>
- Environmental Science & Technology. (2021). Indoor air quality and air purifiers. *Environmental Science & Technology*. Retrieved from <https://www.sciencedirect.com>
- Evans, C., & Fisher, K. (2021). Permitted uses and zoning regulations. *Journal of Planning Law*, 35(6), 712-725. <https://doi.org/10.1080/09504622.2021.1929392>
- Evans, D., & Patel, R. (2020). Parking solutions for recreational facilities. *Parking Review*, 28(1), 56-72. <https://doi.org/10.1108/PR-06-2019-0012>
- Fédération Internationale de l'Automobile. (2023). FIA circuit design and safety guidelines. *Fédération Internationale de l'Automobile*. Retrieved from <https://www.fia.com>

- FEMA. (2021). Emergency access and safety. *Federal Emergency Management Agency*. Retrieved from <https://www.fema.gov>
- Feng, Y., & Wang, H. (2022). Site topography and land development: A new approach to integrating natural features in recreational design. *Landscape and Urban Planning*, 230, 104582. <https://doi.org/10.1016/j.landurbplan.2022.104582>
- Fire Protection Research Foundation. (2023). Sprinkler systems and fire safety. *Fire Protection Research Foundation*. Retrieved from <https://www.nfpa.org>
- Fisher, D., Young, K., & Hayes, R. (2020). Compliance challenges in facility planning. *Environmental Law Journal*, 46(1), 56-72.
- Flickr, (n.d.). *Photos by 9859321@N08*. Retrieved June 9, 2024, from <https://www.flickr.com/photos/9859321@N08/>
- Food Safety and Inspection Service. (2022). Food safety in public areas. *USDA*. Retrieved from <https://www.fsis.usda.gov>
- Fox, T. (2020). Zoning regulations and their impact on recreational site development. *Planning and Zoning Review*, 45(2), 98-109.
- Friedman, B. (2022). Optimizing functional layouts in recreational spaces. *International Journal of Design*, 29(2), 133-145.
- Gallagher, D. & McPherson, M. (2020). Navigating zoning and land-use regulations in recreational facility development. *Journal of Urban Planning and Development*, 146(3), 04020030. [https://doi.org/10.1061/\(ASCE\)UP.1943-5444.0000596](https://doi.org/10.1061/(ASCE)UP.1943-5444.0000596)

- Garcia, P. (2020). Turn radii and their impact on kart racing performance. *Motorsport Engineering Journal*, 32(4), 113-126.
- Gibson, S. (2020). Environmental impacts in site development: A comprehensive review. *Ecology and Planning*, 29(2), 112-127.
- Global Environmental Facility. (2021). Sustainable resource management practices in recreational facilities. *GEF Reports*.
- Go-Kart Racing Association. (2023). Track design and safety. *Go-Kart Racing Association*. Retrieved from <https://www.gokra.com>
- Go Kart Safety Institute. (2022). Safety measures and standards for karting tracks. *GKSI Journal*, 18(3), 102-116.
- Gordon, J. (2020). Planning for accessibility: Designing urban spaces for all users. *City Planning Review*, 12(1), 45-58.
- Green Building Council. (2022). Sustainable building practices. *Green Building Council*. Retrieved from <https://www.usgbc.org>
- Greenfield, S., & Johnson, M. (2023). Soil conditions and their impact on construction. *Geotechnical Engineering Journal*, 47(1), 35-49. <https://doi.org/10.1016/j.geotech.2022.102044>
- Green, J. T., & Harris, K. (2023). Sustainable practices in site planning: Trends and impacts. *Environmental Design & Architecture*, 58(4), 45-58. <https://doi.org/10.1080/9780203629622-005>

Groat, L., & Wang, D. (2021). *Architectural Research Methods* (4th ed.). Wiley.

Hall, P. (2023). *Cities of Tomorrow: An Intellectual History of Urban Planning and Design Since 1880* (4th ed.). Wiley-Blackwell.

Harper, N., & Lewis, F. (2021). Synergies between commercial areas and recreational facilities. *Journal of Urban Economics*, 75(3), 456-470. <https://doi.org/10.1016/j.jue.2021.04.001>

Harris, D. (2022). Designing for competition: Go-kart track planning. *Sports Engineering*, 19(3), 85-101.

Harris, M. (2021). Elevation dynamics in kart track design: Challenges and solutions. *Racing Track Innovations*, 18(2), 45-56.

Hester, R. T., & Miles, A. (2022). *Design for Ecosystem Services: Principles, Practices, and Policies*. Routledge.

Horner, M., & Mason, G. (2022). The role of site planning in optimizing operational efficiency. *Journal of Infrastructure Design*, 48(3), 190-202.

IEEE. (2020). Surveillance systems and data storage. *IEEE Xplore*. Retrieved from <https://ieeexplore.ieee.org>

IKF. (2021). *International Kart Federation rulebook*. International Kart Federation.

Illuminating Engineering Society. (2019). *Lighting Handbook*.

Illuminating Engineering Society. (2023). Lighting for outdoor tracks. *Illuminating Engineering Society*. Retrieved from <https://www.ies.org>

International Code Council. (2021). International building code (11th ed.). *ICC Publishing*.

International Facility Management Association. (2023). Facility management and visitor services.

IFMA. Retrieved from <https://www.ifma.org>

International Karting Commission. (2023). Track maintenance and safety inspections for karting complexes. *IKC Manual*.

International Karting Federation. (2020). International Karting Federation Rulebook. Retrieved from <http://www.internationalkarting.com/rulebook>

International Karting Federation. (2020). Karting track safety standards. *International Karting Federation*. Retrieved from <https://www.ikf.org>

Jackson, M., & Lee, A. (2022). Evolving go-kart track designs: Safety and performance considerations. *Motorsports Engineering Journal*, 23(4), 68-82.

Jacobs, J. (2022). The Death and Life of Great American Cities. *Vintage*.

Johnson, R. (2022). Banked tracks in kart racing: Engineering for performance and safety. *Journal of Track Design and Engineering*, 27(1), 33-42.

Journal of Environmental Management. (2023). Noise control in recreational facilities. *Journal of Environmental Management*. Retrieved from <https://www.journals.elsevier.com>

Journal of Hazardous Materials. (2023). Waste management and disposal. *Journal of Hazardous Materials*. Retrieved from <https://www.sciencedirect.com>

- Journal of Sustainable Water Resources. (2023). Rainwater harvesting systems. *Journal of Sustainable Water Resources*, 15(4), 223-234.
- Kart1. (2024). Go-kart track barrier systems: An overview of safety innovations. Retrieved from <https://www.kart1.com/barriers>
- K1 Circuit, (n.d.). Gallery. Retrieved April 19, 2024, from <https://www.k1circuit.com/gallery/>
- Kennedy, R., & Zhang, Y. (2022). Hybrid track design: Merging indoor and outdoor go-karting experiences. *Transport & Leisure*, 27(1), 55-70.
- Landscape and Urban Planning. (2021). Vegetation and noise reduction. *Landscape and Urban Planning*. Retrieved from <https://www.journals.elsevier.com>
- Larsen, S., & Ahmed, F. (2023). Transportation networks and recreational complex accessibility. *Transport Studies Quarterly*, 67(1), 78-89.
- Lindstrom, A., & Hilty, L. M. (2020). Infrastructure readiness and recreational development: A comprehensive framework for assessing needs and gaps. *Sustainable Cities and Society*, 61, 102362. <https://doi.org/10.1016/j.scs.2020.102362>
- Lewis, J., & Martin, A. (2022). Assessing infrastructure for recreational site accessibility. *Transportation Research Part B*, 153, 92-106. <https://doi.org/10.1016/j.trb.2021.09.006>
- Li, X., Wang, Y., & Zhang, L. (2022). Regulatory compliance in modern site development. *Legal Frameworks in Urban Planning*, 15(2), 142-153.
- Lynch, K. (1981). *Site Planning*. MIT Press.

- Mangles, J. (2019). The Science of Karting: Understanding the Physics Behind the Sport. *Motor Sport Magazine*. Retrieved from <https://www.motorsportmagazine.com/archive/article/2019-march/38/science-karting>
- Marsh, P., & Lawson, H. (2023). Economic viability and sustainability in recreational site design. *Journal of Economics and Urban Planning*, 56(3), 220-235.
- Martin, N., & Clark, S. (2022). Environmental considerations in site planning. *Journal of Environmental Management*, 305, 114270. <https://doi.org/10.1016/j.jenvman.2022.114270>
- McBride, S., & Stein, T. (2021). Integrating architecture and landscape in site planning. *Design Quarterly*, 40(1), 45-58.
- Meiza. (n.d.). Five places you must experience in Ibadan. *Meiza*. Retrieved February 13, 2024, from <https://meiza.ng/five-places-you-must-experience-in-ibadan/>
- Midland Karting. (n.d.). Sponsorship. Retrieved June 9, 2024, from <https://midlandkarting.co.uk/sponsorship/>
- Montanari, S., & Radwan, A. E. (2023). Sustainable utility management in recreational complexes: Best practices and case studies. *Journal of Environmental Management*, 336, 117651. <https://doi.org/10.1016/j.jenvman.2023.117651>
- Morgan, D., & Kaye, J. (2021). Go-kart complexes for leisure: Site planning for accessibility. *Leisure and Sport Design*, 33(2), 34-48.
- Morgan, R., & Lee, J. (2022). Land availability for recreational complex developments in urban areas. *Journal of Urban Development*, 50(4), 320-334.

- Mumford, L. (1961). *The City in History: Its Origins, Its Transformations, and Its Prospects*. *Harcourt, Brace & World*.
- National Building Codes Commission. (2022). Building permit guidelines and safety codes. *NBC Press*.
- National Fire Protection Association. (2016). *NFPA 1: Fire Code*
- National Fire Protection Association. (2022). Fire safety in public facilities: Standards and practices. *NFPA Press*.
- National Fire Protection Association. (2022). Fire safety standards. *NFPA*. Retrieved from <https://www.nfpa.org>
- National Restaurant Association. (2021). Public restroom design. *National Restaurant Association*. Retrieved from <https://www.restaurant.org>
- National Safety Council. (2022). Emergency preparedness in entertainment facilities. *NSC Journal*, 35(2), 85-93.
- Nemecek, M. (2022). *The History of Go-Karting: From Leisure to Professional Sport*. *Springer*.
- Nguyen, M., & Fahim, A. (2020). Accessibility in site planning: A user-centered approach. *Urban Studies*, 27(3), 119-132.
- Nguyen, M., & Patel, S. (2022). Green spaces and hardscaping in motorsport facilities: Enhancing the aesthetic and functional appeal. *Journal of Sports Architecture*, 24(4), 152-167.
- NKA. (2020). National Karting Association standards. *National Karting Association*.

- O'Connor, T., & Reddy, S. (2022). Enhancing visitor experience through thoughtful site design. *Journal of Urban Planning*, 45(3), 219-233. <https://doi.org/10.1016/j.jup.2021.12.003>
- Occupational Safety and Health Administration. (2015). General Industry Standards.
- Occupational Safety and Health Administration. (2022). Health and safety protocols for recreational complexes. *OSHA Guidelines*.
- Oliver, P. (2021). Land use compatibility in urban and recreational planning. *Planning Perspectives*, 36(1), 59-75.
- Orlando Meeting, (n.d.). Orlando Kart Center. Retrieved April 19, 2024, from <https://www.orlandomeeting.com/listing/orlando-kart-center/52648/>
- OTW Safety. (2024). Go kart track design ideas & equipment you'll need. *OTW Safety*. Retrieved June 17, 2024, from <https://otwsafety.com/blog/go-kart-track-design-ideas/>
- Peters, D., & Evans, R. (2021). Racetrack design: Innovation in sports engineering. *Chicago, IL: Performance Engineering Press*.
- Peters, D., & Owens, L. (2022). Land use and site planning for recreational developments. *Land Planning Journal*, 63(1), 103-118.
- Phillips, L., & Turner, J. (2023). Sustainable site planning in go-kart complexes: Balancing fun and function. *Recreational Design Review*, 20(2), 93-110.
- Planning Institute of Australia. (2022). Permitting and regulatory compliance for development projects. *PIA Press*.
- Racecar Engineering. (2021). Barriers for impact absorption. *Racecar Engineering*, 14(3), 89-98.

- Retail Merchandising Association. (2023). Designing effective retail spaces. *Retail Merchandising Association*. Retrieved from <https://www.retailmerchandising.org>
- Richards, G. (2023). *Advancements in Go-Karting: Design, Safety, and Technology*. Routledge.
- Rowland, K. (2018). The Rise of Recreational Motorsports: A Look at Go-Karting's Popularity. *Sports Management Review*, 21(4), 567-582.
- Russell, G. (2020). Community opposition to recreational complex developments. *Journal of Public Planning*, 34(4), 157-169.
- Rye House Kart Raceway, (n.d.). Race track resurfaced. Retrieved April 19, 2024, from <https://www.rye-house.co.uk/race-track-resurfaced/>
- Schodek, D., Bechthold, M., Griggs, K., & Juárez, P. (2020). *Structures: Architecture and building design*. New York, NY: Prentice Hall.
- Scott, H., Meyer, C., & Daniels, B. (2022). Site selection criteria for recreational complexes: A comprehensive review. *Urban Design Quarterly*, 51(2), 182-195.
- Security Industry Association. (2018). *CCTV Surveillance Standards*.
- Security Industry Association. (2022). *Surveillance and security systems*. Security Industry Association. Retrieved from <https://www.securityindustry.org>
- Simpson, E. (2023). Outdoor go-kart tracks: Planning for safety and sustainability. *Recreation Planning*, 31(2), 78-90.
- Singh, R., & Kumar, P. (2021). Best practices for solid waste management in recreational facilities. *Waste Management & Research*, 39(6), 834-846. <https://doi.org/10.1177/0734242X211022274>

- Small Business Administration. (2021). Operational permits and licensing for recreational businesses. *SBA Reports*.
- Smith, A., & Taylor, D. (2021). Principles of sustainable site planning. *Green Architecture Today*, 18(3), 145-162.
- Smith, N. J., & Tews, M. (2021). *Recreational Site Planning: Principles and Practices*. Springer.
- Supercharged Racing, (n.d.). Indoor karting. Retrieved June 9, 2024, from <https://superchargedracing.com/indoorkarting/>
- Talen, E. (2020). *Urban Design Reclaimed: The Role of Architecture in City Planning*. Routledge.
- Tavares, L., Mendes, L., & Costa, J. (2021). Optimal design criteria for go-kart tracks: Balancing speed and safety. *International Journal of Motorsport Science*, 15(3), 205-219.
- Thompson, A. (2021). *Planning and designing recreational spaces: A comprehensive approach*. London, UK: Design Publishing.
- Timmons, J., & Flores, A. (2021). Economic feasibility studies in site planning: A practical approach. *Development Economics*, 42(2), 101-113.
- Tortoise Path, (n.d.). Bush Riders Go-Karting. Retrieved March 4, 2024, from <https://nigeria.tortoisepath.com/place/bush-riders-go-karting/>
- Trackhouse Motorplex, (n.d.). Race now. Retrieved March 4, 2024, from <https://trackhousemotorplex.com/race-now/>
- United States Geological Survey. (2018). *Water Resource Management*.

- Urban Forestry & Urban Greening. (2023). Green spaces and urban sustainability. *Urban Forestry & Urban Greening*. Retrieved from <https://www.journals.elsevier.com>
- U.S. Department of Energy. (2022). Lighting and energy efficiency. *U.S. Department of Energy*. Retrieved from <https://www.energy.gov>
- U.S. Access Board. (2020). Accessibility guidelines for public facilities. *USAB Report*.
- Walker, J. (2021). The evolution of go-karting: From hobby to professional sport. *Sports History Review*, 16(4), 122-137.
- Wang, L. (2023). Safety considerations in recreational facility planning. *Urban Safety Journal*, 28(3), 46-61.
- Wang, Y., & Li, X. (2021). *Land Use Planning for Sustainable Development*. CRC Press.
- Waste Management. (2021). Recycling and waste management. *Waste Management*. Retrieved from <https://www.wm.com>
- Williams, T., & Lee, P. (2022). Planning and designing ancillary facilities for motorsport complexes. *Journal of Motorsports Management*, 30(1), 55-69.
- Wilson, G., & Brown, T. (2023). Navigating zoning laws and building codes. *Journal of Planning Education and Research*, 43(2), 175-189. <https://doi.org/10.1177/0739456X20981871>
- World Wildlife Fund. (2021). Sustainable development and habitat protection strategies. *WWF Reports*.
- Wright, T., Myers, K., & Robinson, P. (2021). Topographical challenges in recreational site development. *Journal of Landscape and Urban Planning*, 54(2), 93-107.

- Yost, J. (2018). Designing Safe and Engaging Go-Kart Tracks. *Karting Safety Council*. Retrieved from <http://www.kartingsafetycouncil.com/safe-design>
- Zaremba, J. (2021). Go-Kart Track Design and Layout: Key Considerations. *Sports Engineering*, 24(2), 123-135.
- Zhang, L., & Chen, X. (2021). The importance of soil evaluation in site development: Case studies from recreational complexes. *Engineering Geology*, 287, 106097. <https://doi.org/10.1016/j.enggeo.2021.106097>
- Zheng, Y., & Liu, J. (2021). Reducing air emissions in recreational motorsports: Adopting cleaner fuel technologies. *Environmental Science & Technology*, 55(5), 2908-2916. <https://doi.org/10.1021/acs.est.0c07345>
- Zhu, Y., Lin, X., & Huang, S. (2023). Track geometry and kart racing dynamics: A comparative analysis. *International Journal of Racing Technologies*, 19(2), 78-95.

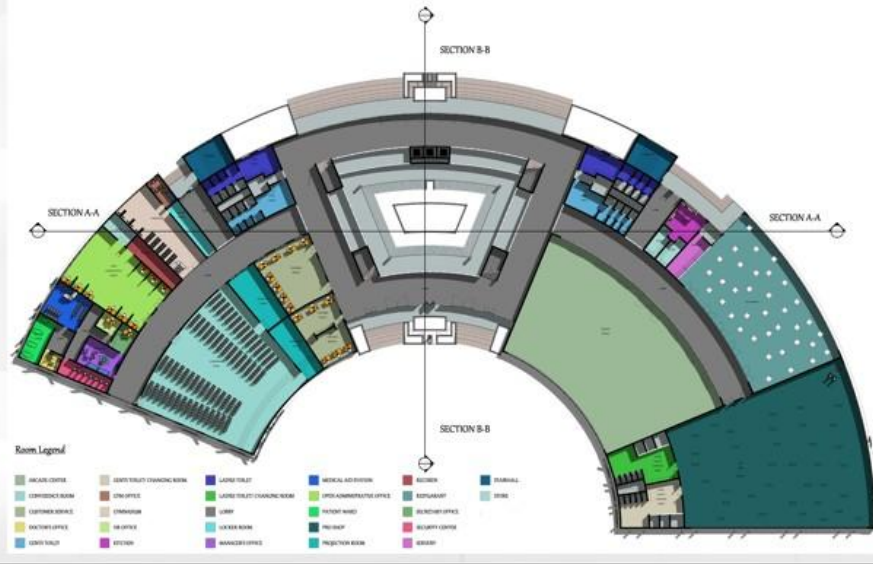
Appendices

Appendix 1 – Presentation Drawings



GROUND FLOOR PLAN

PRESENTATION DRAWING



Room Legend

REAR LOBBY	LOBBY TRAYT CHANGING ROOM	LOBBY TRAYT	MEDICAL ADMINISTRATION	RECEPTION	STAIRWELL
CONFERENCE ROOM	LOBBY OFFICE	LOBBY TRAYT CHANGING ROOM	OPERATIONAL OFFICE	RECEPTION OFFICE	TOILET
CONFERENCE OFFICE	STORAGE	LOBBY	POST OFFICE	SECURITY OFFICE	
WATERLOO OFFICE	LOBBY OFFICE	LOBBY ROOM	POST OFFICE	SECURITY OFFICE	
LOBBY TRAYT	OFFICE	MANAGER OFFICE	INSPECTION ROOM	OFFICE	

**PROPOSED GO-KART
COMPLEX DESIGN, OYO STATE.**

**OGUNSEEMI DANIEL
OLUWATIMILEHIN
LCU/PC/005097**

**ADVANCED
ARCHITECTURAL
DESIGN STUDIO 3
(ARC 721)**



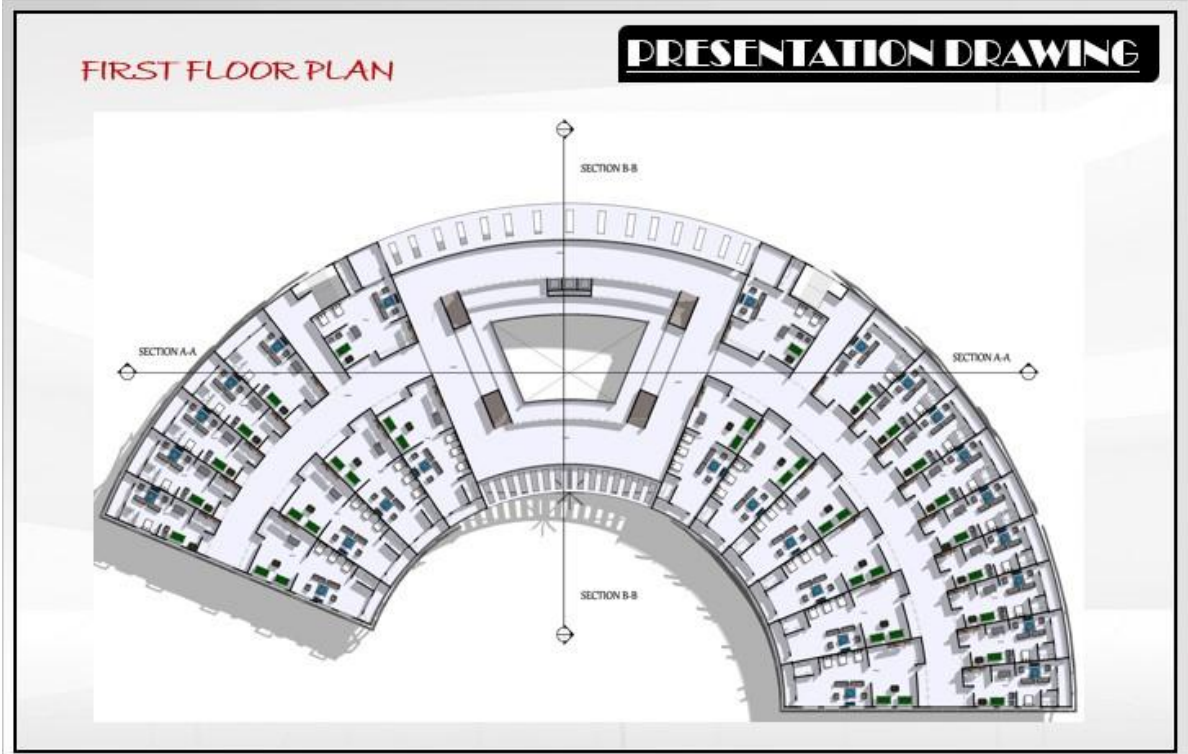
**ARC. OLANIZAN MAKINS
OLAMIDE
ARC. OGUNTUNDE DAVID
DR. (ARC.) OBALEZE OLUDARE**

**SCALE
1:250**

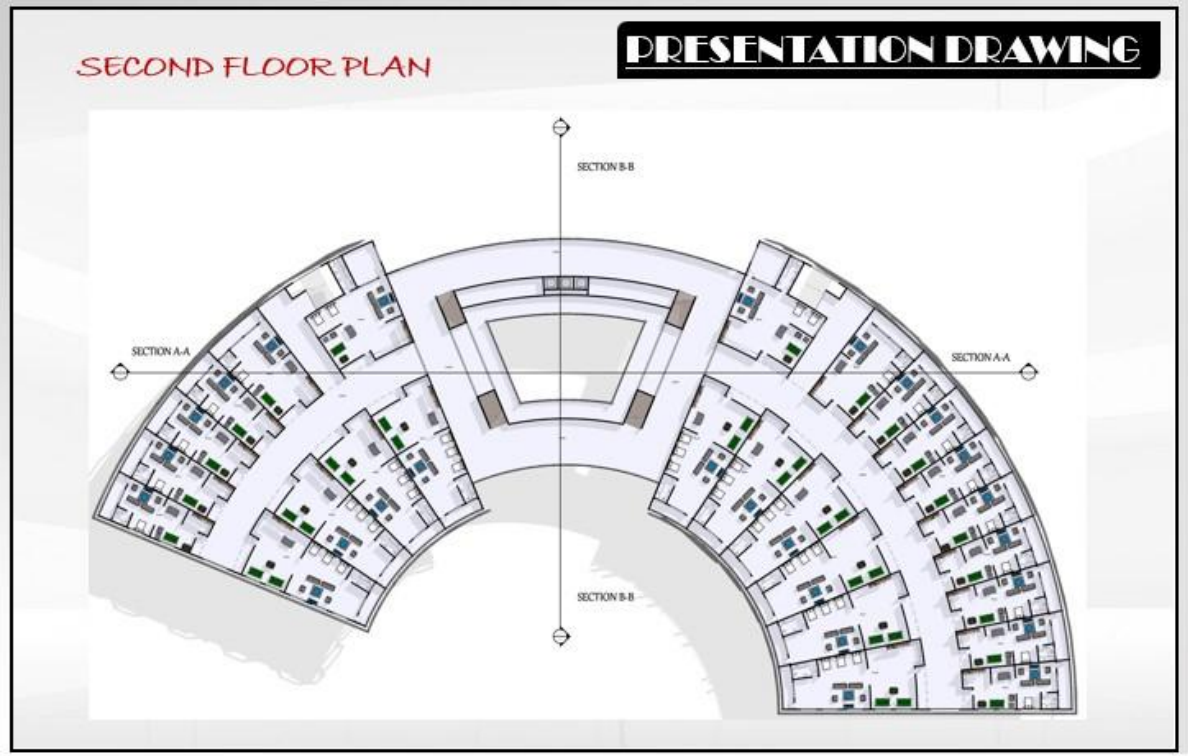
**DATE
JUL,
2024**



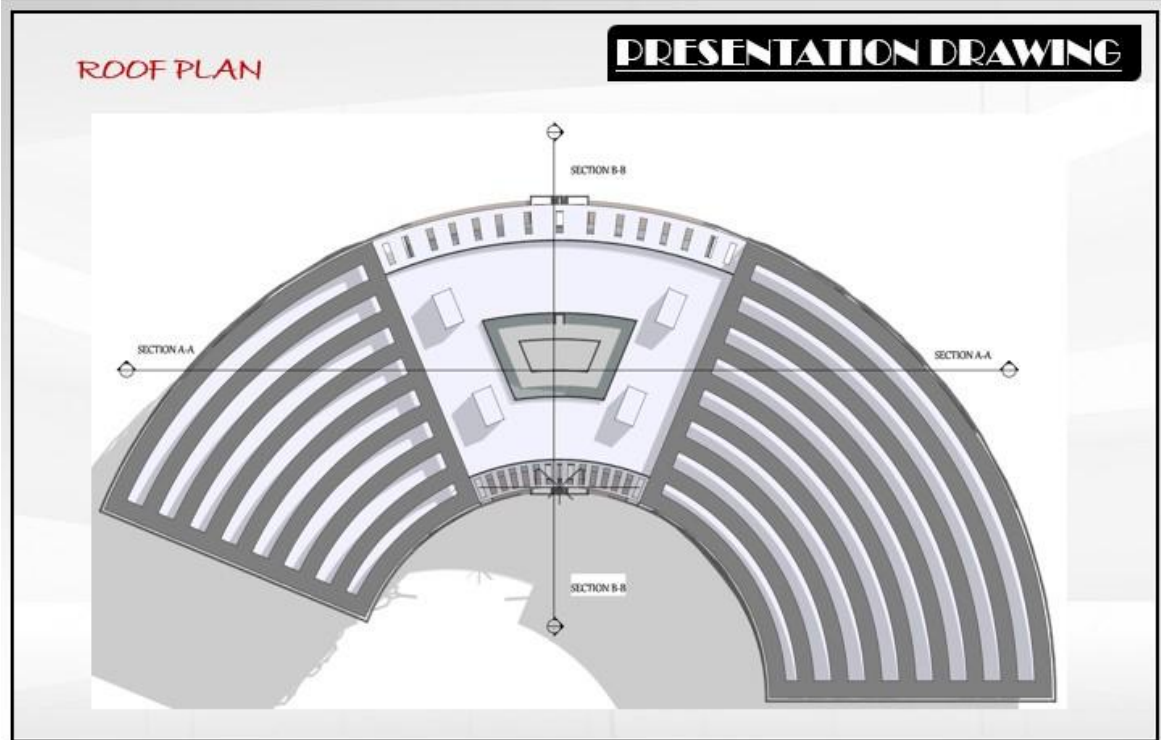
Lead City University Ibadan



PROPOSED GO-KART COMPLEX DESIGN, OYO STATE.	OGUNSEEMI DANIEL, OLUWATIMILEHIN LCU/PG/005097	ADVANCED ARCHITECTURAL DESIGN STUDIO 3 (ARC 721)	CRITICS	ARC. OLANIZAN MARTINS OLAMIDE ARC. OGUNTUNDE DAVID DR. (ARC.) OBALEYE OLUDARE	SCALE 1:250	DATE JUL, 2024	27



PROPOSED GO-KART COMPLEX DESIGN, OYO STATE.	OGUNSEEMI DANIEL, OLUWATIMILEHIN LCU/PG/005097	ADVANCED ARCHITECTURAL DESIGN STUDIO 3 (ARC 721)	CRITICS	ARC. OLANIZAN MARTINS OLAMIDE ARC. OGUNTUNDE DAVID DR. (ARC.) OBALEYE OLUDARE	SCALE 1:250	DATE JUL, 2024	28



PRESENTATION DRAWING

ROOF PLAN

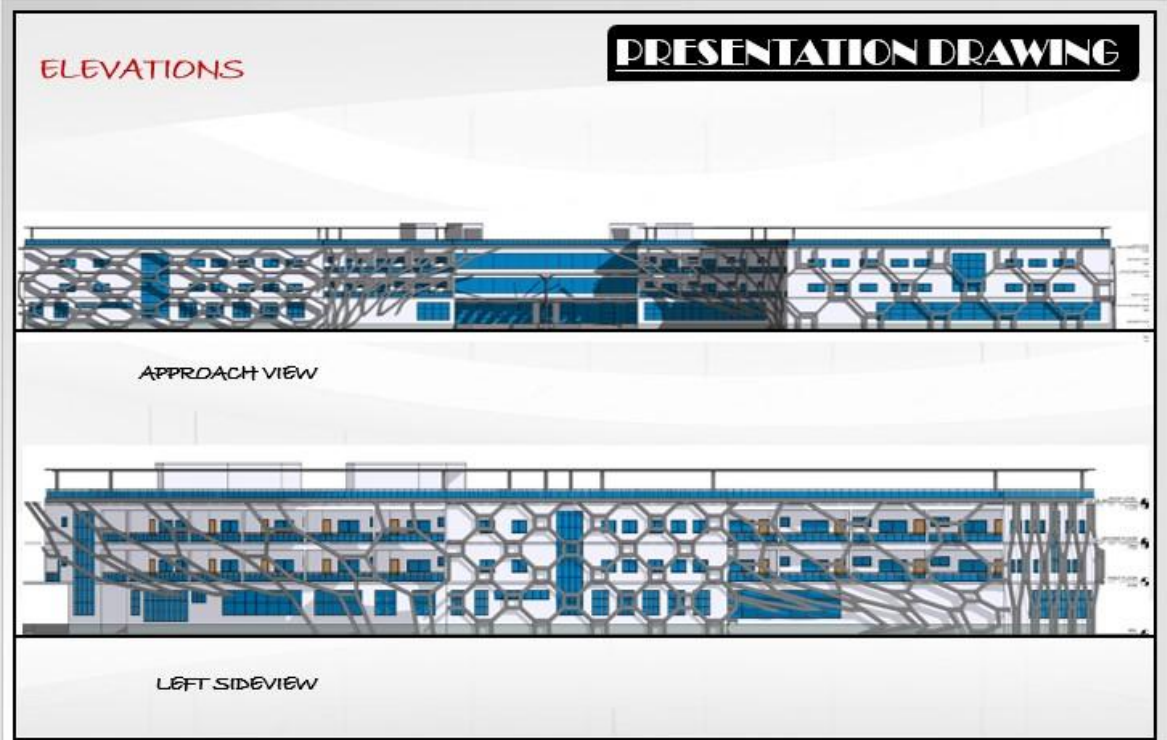
PROPOSED GO-KART COMPLEX DESIGN, OYO STATE.	OGUNSEEMI DANIEL	ADVANCED ARCHITECTURAL DESIGN STUDIO 3 (ARC 721)	CRITICS	ARC. OLANIYAN MARTINS OLAMIDE	SCALE	DATE	29
	OLUWATIMILEHIN LCU/PG/005097			ARC. OGUNTUNDE DAVID DR. (ARC.) OBALEYE OLUDARE	1:250	JUL, 2024	



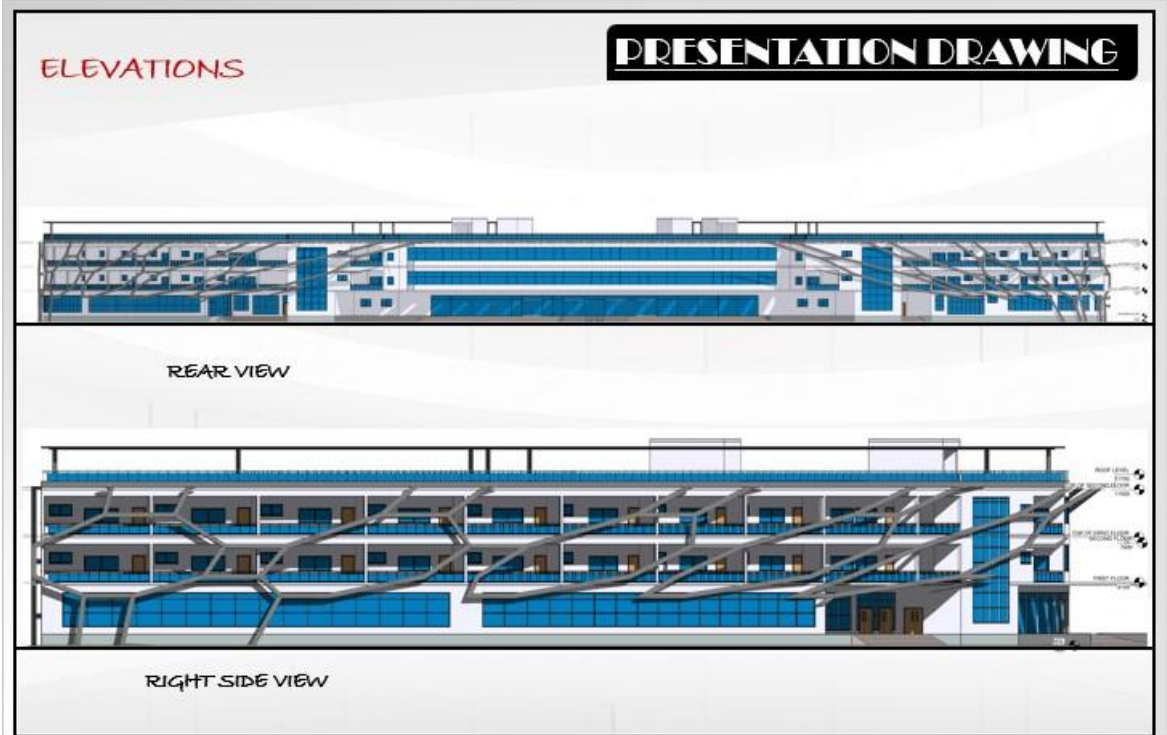
PRESENTATION DRAWING

3D PERSPECTIVE SECTIONS

PROPOSED GO-KART COMPLEX DESIGN, OYO STATE.	OGUNSEEMI DANIEL	ADVANCED ARCHITECTURAL DESIGN STUDIO 3 (ARC 721)	CRITICS	ARC. OLANIYAN MARTINS OLAMIDE	SCALE	DATE	30
	OLUWATIMILEHIN LCU/PG/005097			ARC. OGUNTUNDE DAVID DR. (ARC.) OBALEYE OLUDARE	1:100	JUL, 2024	



PROPOSED GO-KART COMPLEX DESIGN, OYO STATE.	OGUNSEEMI DANIEL	ADVANCED ARCHITECTURAL DESIGN STUDIO 3 (ARC 721)	CRITICS	ARC. OLANIYAN MARTINS OLAMIDE	SCALE	DATE	31
	OLUWATIMILEHIN LCU/PG/005097			ARC. OGUNTUNDE DAVID DR. (ARC.) OBALEYE OLUDARE	1:100	JUL, 2024	



PROPOSED GO-KART COMPLEX DESIGN, OYO STATE.	OGUNSEEMI DANIEL	ADVANCED ARCHITECTURAL DESIGN STUDIO 3 (ARC 721)	CRITICS	ARC. OLANIYAN MARTINS OLAMIDE	SCALE	DATE	32
	OLUWATIMILEHIN LCU/PG/005097			ARC. OGUNTUNDE DAVID DR. (ARC.) OBALEYE OLUDARE	1:100	JUL, 2024	

3D VIEW

PRESENTATION DRAWING



**PROPOSED GO-KART
COMPLEX DESIGN, OYO STATE.**

**OGUNSEEMI DANIEL
OLUWATIMILEHIN
LCU/PG/005097**

**ADVANCED
ARCHITECTURAL
DESIGN STUDIO 3
(ARC 721)**



**ARC. OLANIZAN MARTINS
OLAMIDE
ARC. OGUNTUNDE DAVID
DR. (ARC.) OBALEYE OLUDARE**

**SCALE
NTS
DATE
JUL,
2024**



3D VIEW

PRESENTATION DRAWING



**PROPOSED GO-KART
COMPLEX DESIGN, OYO STATE.**

**OGUNSEEMI DANIEL
OLUWATIMILEHIN
LCU/PG/005097**

**ADVANCED
ARCHITECTURAL
DESIGN STUDIO 3
(ARC 721)**



**ARC. OLANIZAN MARTINS
OLAMIDE
ARC. OGUNTUNDE DAVID
DR. (ARC.) OBALEYE OLUDARE**

**SCALE
NTS
DATE
JUL,
2024**



3D VIEW

PRESENTATION DRAWING



**PROPOSED GO-KART
COMPLEX DESIGN, OYO STATE.**

**OGUNSEEMI DANIEL
OLUWATIMILEHIN
LCU/PG/005097**

**ADVANCED
ARCHITECTURAL
DESIGN STUDIO 3
(ARC 721)**



**CRITICS
ARC. OLANTYAN MAKINS
OLAMIDE
ARC. OGUNTUNDE DAVID
DR. (ARC.) OBALEYE OLUDARE**

**SCALE
NTS**

**DATE
JUL,
2024**



3D VIEW

PRESENTATION DRAWING



**PROPOSED GO-KART
COMPLEX DESIGN, OYO STATE.**

**OGUNSEEMI DANIEL
OLUWATIMILEHIN
LCU/PG/005097**

**ADVANCED
ARCHITECTURAL
DESIGN STUDIO 3
(ARC 721)**



**CRITICS
ARC. OLANTYAN MAKINS
OLAMIDE
ARC. OGUNTUNDE DAVID
DR. (ARC.) OBALEYE OLUDARE**

**SCALE
NTS**

**DATE
JUL,
2024**



Bio-data

A. Personal Data

1. Full Name: OGUNSEEMI Daniel Oluwatimilehin
2. Address: Port-Harcourt, Rivers State, Nigeria
3. Email Adress: danielmathew642@gmail.com
4. Phone Number: 09031736909
5. Date of Birth: 26th October
6. Place of Birth: Nigeria
7. Nationality: Nigerian
8. Marital Status: Single
9. Name and Address of Next of Kin: Ogunseemi Esther

B. Educational Background

1. Educational Institutions Attended with Dates and Qualification:

Qualifications	Institution	Date
MSc Architecture	Lead City University, Ibadan, Oyo State.	2022 – (Ongoing)
BSc. Architecture	Lead City University, Ibadan, Oyo State.	2018 – 2022
Secondary School Certificate	Macdonald Memorial International Institute (MMII), Port-Harcourt, Rivers State.	2011 - 2017
Primary School	St. Anns Nursery and Primary School, Port-	2003 - 2011

Leaving Harcourt, Rivers State.
Certificate

D. Work Experience: With Dates

Organization	Position	Date
Halivax Associates Ltd.	Design Architect & Site Supervisor <ul style="list-style-type: none">• Serve as the design architect for some building projects, ensuring alignment with client requirements and architectural standards.• Supervise on-site activities to maintain adherence to design specifications and project timelines.	2023 - Present
Ab.dt Partnership	Intern Architect <ul style="list-style-type: none">• Assisted senior architects in preparing design drafts and construction documents.• Collaborated on project development and design revisions.• Gained hands-on experience in design techniques and project workflow.	2021
Freelance Architect	Design Architect & Site Activities <ul style="list-style-type: none">• Provide architectural design services for various building projects, ensuring compliance with client specifications.	2019 - Present

- Conduct site visits to assess project progress and integrate feedback into ongoing design work.
- Develop technical drawings and 3D models to aid client understanding and project visualization.
- Supervise site-related activities, coordinating with contractors and ensuring adherence to design specifications.

Computer

Technician

2016 - Present

Technician

- Provide hardware and software troubleshooting services, including repairs, installations, and maintenance.
- Assist clients with installing and configuring operating systems and software applications for their organizations and architectural firms.

E. Publications –

.....

.....

Signature

Date

The University Compliance Certification

This is to certify that the Thesis by Daniel Oluwatimilehin OGUNSEEMI, with the matriculation number LG/PG/005097 in the Department of Architecture, Faculty of Environmental Design and Management Lead City University, Ibadan, is in full compliance with the University format and style of Thesis.

.....

.....

Signature

Date

Lead City University Ibadan DO NOT COPY

COPY

Lcu Library

Ogunseemi_Daniel_Oluwatimilehin LCU Library

- Quick Submit
- Quick Submit
- Lead City University

Document Details

Submission ID
enroll: 12027198565

Submission Date
Oct 10, 2024, 11:30 AM GMT+1

Download Date
Oct 10, 2024, 1:46 PM GMT+1

File Name
08_Ogunseemi_Daniel_Oluwatimilehin_1.docx

File Size
9.8 MB

122 Pages
17,526 Words
100,707 Characters

6% Overall Similarity

The combined total of all matches, including overlapping sources, for each database.

Filtered from the Report

- Bibliography
- Small Matches (less than 8 words)

Match Groups

- 67** Not Cited or Quoted 5%
Matches with neither in-text citation nor quotation marks
- 19** Missing Quotations 1%
Matches that are still very similar to source material
- 0** Mixing Citation 0%
Matches that have quotation marks, but no in-text citation
- 0** Cited and Quoted 0%
Matches with in-text citation present, but no quotation marks

Top Sources

- 4% Internet sources
- 2% Publications
- 2% Submitted works (Student Papers)

Integrity Flags

0 Integrity Flags for Review

No suspicious text manipulations found.

Our system's algorithms look deeply at a document for any inconsistencies that would set it apart from a normal submission. If we notice something strange, we flag it for you to review.

A flag is not necessarily an indicator of a problem. However, we'd recommend you focus your attention there for further review.

JPY

Lead City University Ibadan DO