

Effect of Landscape Design on Hotel Environment

Korede Mayowa OSOKOYA
LCU/PG/002149

**Being an Msc Thesis Submitted to The Department of Architecture, Faculty of
Environmental Design and Management, Lead City University, Ibadan, Oyo State, Nigeria**

**In Partial Fulfilment Of The Requirements for the Award of a Master Degree (M.Sc) in
Architecture**

2023

Certification

This is to certify that Korede Mayowa OSOKOYA with matriculation number LCU/PG/002149 carried out this research work titled “Effect of Landscape Design On Hotel Environment” in the Department of Architecture, Faculty of Environmental Design and Management, Lead City University, Ibadan, Oyo state, for the award of Master Degree (MSc) in Architecture and that this has not been previously submitted. The thesis is an outcome of an independent and original work. I have duly acknowledged all the sources from which the ideas and the extracts have been taken. The project is free from any plagiarism and has not been previously submitted to any other institution.

.....
Dr. (Arc) Obaleye
(Supervisor)

.....
Date

.....
Dr. (Arc) Adedire Funmilayo
(Head of Department)

.....
Date

Dedication

This thesis is dedicated to the Almighty God and my wife who is my greatest supporter.

Lead City University Ibadan DO NOT COPY

Acknowledgement

I want to express my heartfelt gratitude and admiration to God Almighty, who has never stopped providing for my needs, allowing me to reach this pinnacle in my academic career. I also thank my wife, Mrs. Victoria Osokoya for her love, cooperation, and understanding throughout my program.

I would also like to thank the head, Dr. (Arc) Adedire Funmilayo, and the entire staff at Lead City University's Department of Architecture, the administrative staff of post graduate college for making my time there an unforgettable learning experience. But most of all, I want to thank my supervisor, Dr. Obaleye, for taking the time to read my work. I also want to express my gratitude to the lecturers in the department of architecture for their constant guidance and mentoring during my time in the school.

I'm very thankful to God for bringing each of you into my life. I alone am accountable for any errors found in the work, if any, even though the aforementioned institution and persons assisted in the research process.

Abstract

One of the basic demands of the modern society is to live in a healthy environment. This is particularly emphasized in urban settings where the opportunities of connecting and interacting with green spaces are getting thinner due to the rapid development of infrastructure that has tampered with the natural environment and its features. To counteract this, it is essential to incorporate natural elements into our built environment to reap the benefits of nature. This research studied the impact of landscape design on human health, productivity, and overall well-being in hotels through literature and case studies. A hotel was designed using landscape design principles and elements to enhance aesthetics and human wellness. The proposed hotel included features such as natural lighting and ventilation, weather, plants, and natural landscapes.

Keywords: Hotel, Landscape Design, Landscape Elements

Word count: 127

Table of Contents

Content	Page
Certification	i
Dedication	ii
Acknowledgement	iii
Abstract	v
Table of Contents	vi
List of Tables	ix
List of Figures	x
Chapter One: Introduction	
1.1 Background to the Study	1
1.2 Statement of the Research Problem	1
1.3 Aim and Objectives of the Study	2
1.4 Research Questions	2
1.5 Scope of the Study	2
1.6 Limitation of the Study	2
1.7 Operational Definition of Terms	3
Chapter Two: Literature Review	
2.1 Conceptual Review	4
2.1.1 Hotel Buildings	4
2.1.2 Types of Hotels	4
2.1.3 Hotel Classification Systems	8
2.1.4 Origin and History of Landscape	11
2.1.5 Functions of Landscape	12
2.1.6 Qualities of Landscape	12

2.1.7	Elements of Landscape	13
2.1.8	Role of the Senses in Perception of Landscape	14
2.1.9	Components of Landscape Design	16
2.1.10	Principles of Landscape Design	17
2.2	Empirical Review	18
2.2.1	Integrating Nature into the Built Environment	18
Chapter Three:	Methodology	19
3.1	Introduction	19
3.2	Case Study Selection Criteria	19
3.3	Case Studies	20
3.3.1	Case Study 1	20
3.3.2	Case Study 2	22
3.3.3	Case Study 3	24
3.3.4	Case Study 4	26
3.3.5	Case Study 5	28
Chapter Four	Site, Project Analysis, and Design Synthesis	32
4.1	Study Area	32
4.2	Project Analysis	33
Chapter Five:	Conclusion	41
5.1	Project Appraisal	41
5.2	Conclusion and Recommendation	46
	References	53
	Appendix	59
	Bio-data	67
	The University Compliance Certification	69

List of Tables

Table	Title	Page
2.1	Classification factors of hotels	8
2.2	Sources of smell in Outdoor Environment	15
2.3	Sources of sound in outdoor environment	16
2.4	Sources of touch in outdoor environment	16

Lead City University Ibadan DO NOT COPY

List of Figures

Figure	Title	Page
2.1	Vorduma guest house in Paris	6
2.2	Welch Motel in Vietnam	7
2.3	Arial view of Nike Lake Resort Hotel	8
2.4	Landscape around the walkways in Elephant Hills Resort, in Victoria Falls, Zimba	13
2.5	Paris - Waterfront of the Canal Saint M.	13
2.6	Prague- Slovansky Island	14
2.7	Prague Alsovo Waterfront	15
3.1	Front view of Transcorp Hilton-Lagos Nigeria	20
3.2	Area view of Transcorp Hilton-Abuja Nigeria	21

Chapter One

Introduction

1.1 Background to the Study

Today, one of the basic demands of the modern society is the opportunity of living in a healthy environment, and this is particular in urban settings where the opportunities of connecting and interacting with green spaces are getting thinner due to the rapid development of infrastructure that tampers with the natural environment and features. People appreciate the features and qualities of nature in their nearby environment in which they find themselves, and preferences are reported to relate to specific physical landscape character of the designed landscapes within the surrounding (Garret et al., 2018). A hotel is an establishment that is built for the sole purpose of hosting people by providing accommodation, feeding and other facilities for people in need of such services including travelers and tourists (Chan & Mackenzie, 2013). There exist a classification of hotel buildings and is based on its spaces and facilities (Lawson & Rawson, 1999). These buildings are popular for the luxury, convention and tourism they provide for in any place because of their conspicuous nature and drive for commercial success. Across the hospitality industry, hotel buildings in recent years have developed far beyond the usual services of accommodation and 2 feeding, to other extended services and facilities mostly involved in outdoor spaces. Hence, they have great potentials of providing an experience with outdoor spaces due to some services that they have to offer guests and other users compared to other building types (Jeremy et al., N.D). However, since sustainability in recent years has been a key issue in industries, it is important to view the framework of green natural environment and means of harnessing it to improve health and also add to sustainable development in the hospitality industry (Sue, 2013).

1.2. Statement of the Problem

With the current fast economic growth and urbanization in regions around the world, towns and cities are developing continuously. Open spaces are getting sparser as they are being occupied for the purpose of erecting buildings and other urban infrastructure. This gradually reduces the chances of having an outdoor open space where people can socialise, relax and have opportunities of getting engaged and interact with the natural environment. Such an artificial environment can have some harmful consequences on people due to the absence of natural elements (Ruddick, 2015). Furthermore, with the advent of modern technology such as internet, computers, mobiles, televisions and other modern electronic gadgets, people tend to spend more time indoors entertaining themselves with these gadgets.

1.3 Aim and Objectives of the Study

The aim of this study is to propose a 3-star hotel design located in Ibadan, Oyo state, using landscape elements to enhance satisfactory user experience.

The objectives of this study are:

1. To identify landscape elements that can be used to enhance hotel environment.
2. Investigate the impact of identified landscape elements on user experience in a hotel.
3. To propose a 3-star hotel design that incorporates identified landscape elements.

1.4 Research Questions

1. What are the landscape elements that can be used to enhance hotel environments?
2. What is the impact of the identified landscape elements on user experience in a hotel?
3. How can the identified landscape elements be used in the design of a 3- star hotel design?

1.5 Scope of the Study

The scope of this study cover an evaluation of 10 different hotel buildings in Ibadan, which will highlight the theoretical framework necessary to achieve physical and mental wellbeing in hotel designs through the assessment of existing principles and the consideration of the landscape pattern and features, mostly in the outdoor areas.

1.6 Limitation of the Study

This research is limited to the city of Ibadan, Oyo State, Nigeria. Due to the security situation in the country, it was difficult to obtain permissions from the managements of some of the selected hotels to carry out the necessary evaluations and data collections. Some hotels also restrained from releasing some necessary information and also refused access to certain areas of the hotel because of their policy of not infringing on their guest's privacy and also to protect their guest against the present insecurities happening around in the country.

1.7 Operational Definition of terms

Landscape:

Landscape elements:

Hotel:

User Experience:

Chapter Two

Literature Review

2.1 Conceptual Review

This chapter provides an in-depth review of hotels, highlighting its definitions, history, classification, types, characteristics, and other relevant information regarding landscape design. It also examines previous studies by many other researchers in this area of study and analyzes some of the existing literature to determine how the studies were conducted conceptually and theoretically.

2.1.1 Hotel Buildings

In terms of hospitality, hotel buildings are particularly crucial since they give lodging as well as other services and facilities to visitors, tourists, and other people in need in exchange for a fee (Chan and Mackenzie, 2013). According to Tahir and Satinder (2017), a hotel is an establishment that is distinguished by the single aim of providing lodging and food services to any individual able and willing to make payment for the services offered, and who is in a fit to be received by the business for this purpose (Diana, 2014).

In recent years, hotels have expanded beyond only providing places to stay and dine by adding new facilities and services including outdoor leisure areas, fitness centres, and many other things.

2.1.2 Types of Hotels

According to Chan and Mackenzie (2013), hotels provide a variety of services, have a range of amenities, and run differently depending on the needs of the people staying there. Airport hotels, casino hotels, all-suite hotels, resort hotels, boutique hotels, city-center hotels, guesthouses, convention hotels, sub-urban hotels, highway hotels or motels, commercial hotels, spa hotels, and

cabins are among the types of hotels that may provide lodging, proximity to places of activities for intended guests, comfort, luxury, and functionality as needed by travelers or guests (Mandali, 2016).

2.1.2.1 Airport hotels

This particular hotel style is made to offer logging and culinary services to travelers. They are made up of a combination of various fundamental amenities and facilities (Chan & Mackenzie, 2013). They are consequently the hotels that cater only to those who are traveling, whether for work, pleasure, or other reasons (Mandali, 2016). Due to the current multi-dimensional facilities made available by the modern sorts, the conventional airport hotels had fewer amenities to offer and fewer visitors than their contemporary counter parts.

2.1.2.2 All-Suite hotels

The rooms in an all-suite hotel are larger than the standard hotel rooms since they are divided into different areas for working, sleeping, and other activities (Diana, 2014). There is a living room that is distinct from the bedroom, and there may also be a kitchen area that is separate from the other areas in the room (Mandali, 2016). An all-suite hotel can be situated in residential, urban, or suburban locations and offers a wide range of amenities and services.

2.1.2.3 Boutique hotels

Boutique hotels are designed to give customers more customized accommodations and specialized services/facilities upon request (Rodick, 2012). Since they are smaller and often more opulent than chain hotels, boutique hotels are also referred to as lifestyle hotels. Compared to larger, more traditional hotels, they typically have less rules and regulations. The majority of boutique hotels—if not all—allow pets. A chic bar or lounge with a contemporary beverage menu and local wines is frequently available at a boutique hotel.

2.1.2.4 Casino hotels

Casino hotels are built to draw players and gamblers, not to compete with other housing options. With the principal businesses of casinos and live entertainment, they are primarily concerned

with generating revenue. The hotel's offerings include a range of opulent extras including casual dining establishments and retail malls (Chan & Mackenzie, 2013).

2.1.2.5 City Centre hotel

City centre hotels are typically found in the centre of the city and offer mid-range to luxury suites as well as corporate, residential, and economic perks (Rodick, 2012). These are commonplace city hotels that feature high-rise buildings with lodging, shopping, offices, and other amenities.

2.1.2.6 Conference hotels

For conferences, meetings, and events, conference hotels offer a variety of meeting and function rooms in addition to lodging. Due to this, the majority of them offer in-room laundry, retail centers, meeting rooms, and airport shuttle services in addition to 24-hour room service (Chan & Mackenzie, 2013). In order to facilitate simple access for visitors, they are occasionally situated next to convention centers. The offered services are of the highest caliber, and conventions are typically priced as packages that include lodging and meeting space.

2.1.2.7 Guest houses

Guest houses are compact hotels that resemble breakfast inns and are found in larger towns, according to Tahir et al. (2017) Although their amenities are few, all of their rooms feature private bathrooms. Along with providing lodging as their primary service, they also provide luxurious apartments and modestly priced rooms. For guests who don't have local relations to stay with, guest houses are the sole option for lodging in several parts of the world. A guest home differs from a hotel in a number of ways, one of which is that there is no full-time staff.



Figure 2.1: Vorduma guest house in Paris
Source: kinrosshouse.co.uk

2.1.2.8 Highway Hotels

Motels are the common name for hotels beside highways. They offer a few basic amenities and significantly smaller rooms than standard hotel rooms for brief or overnight stays for travelers and motorists. For convenient access by travelers, highway motels are typically situated on the fringes of towns and cities (Mackenzie, 2009). They are often built in the shape of a "I," "L," or "U," with guest rooms, an adjoining manager's office, a small reception, and occasionally a small diner and a swimming pool. A few of the rooms in select highway motels would be bigger and have kitchenettes; these rooms are advertised at higher prices.



Figure 2.2: welch motel in Vietnam
Source: www.welchmotel.com/images/motel_front.jpg

2.1.2.9 Spa hotels

Hotels with a focus on health and individual services and treatments for spa-seeking clientele are known as spa hotels. Spa hotels are typically found in resorts or in urban areas. They offer lodging options, spa services, as well as possible relaxation/stress management, weight control, and Pilates/yoga (McCormick et al., 2012). Prices The rates at spa hotels are typically greater than those at regular hotels or day spas. However, they might not have complete access to all the amenities a hotel guest would.

2.1.2.10 Resort hotels

According to Tahir and Satinder (2017), resort hotels are establishments built with the purpose of offering visitors lodging, recreational amenities, sporting events, and a variety of food and beverage establishments, from casual to fine-dining restaurants with features of natural beauty or interest. Hotels that cater to visitors and vacationers are typically found near the sea or in mountains. Spa resorts, ski resorts, and ecotourism resorts are a few types of resort hotels.



Figure 2.3: Aerial view of Nike Lake Resort hotel
Source: www.nationsonline.org, 2019

2.1.3 Hotel Classification Systems

According to Desjarlais et al. (1995), the classification of hotels is based on star ratings, and the quality of the hotel is a factor in determining the rating. Therefore, a higher star count denotes greater luxury. According to (Chan and Mackenzie, 2013), the European Automobile and

Cycling Clubs were the originators of hotel rating systems like the British system and the Automobile Association (AA). According to the AA rating system, hotels can be categorized based on their star ratings; the most recent highest rating is a seven-star hotel. The lowest rating is a one-star hotel and goes all the way up to a five-star hotel.

Hotels, according to Chan and Mackenzie (2013), have a variety of classification systems that can be used for either evaluation or description. The characteristics that are frequently used to categorize hotels are shown in Table 2.1. Travelers are given a brief overview of hotels through this classification so they may choose which ones to book based on the experience they hope to have.

S/n	Classification Factor	Examples
1	Function	Meeting and convention
2	Market segment	Leisure travellers
3	Design	Exterior or interior design features
4	Location	City centre
5	Hotel size	Number of rooms
6	Rating	5(five) star hotels
7	Price	Budget or luxury
8	Staff to room ratio	A staff serving 2 rooms
9	Distinctiveness of property	All-suite hotels

Table 2.1: Classification factors of hotels

Source: The Government of the Hong Kong Special Administrative region 2013

2.1.3.1 Five star hotels

These are bigger hotels with opulent interiors and unique settings, as well as amenities that provide accommodations of a standard level of comfort and cleanliness. According to Ottosson and Grahn (2005), these hotel types are distinguished by their opulent and large rooms as well as a more formal and polished level of service from knowledgeable and skilled staff. They are distinguished by their opulent restaurants, open dining areas, and 24-hour room service with upscale meals, beverages, and snacks. Five star hotels, according to Ottosson and Grahn (2005), are characterized by luxury that meets the highest worldwide standards. It is distinguished by

impeccable furnishings and high-end, awe-inspiring interior design. It also offers convenience and refinement, as well as carefully monitored and faultless services and attentive yet unobtrusive attention to visitors' needs. The restaurant is set up to produce food that meets high international standards, and its personnel is highly skilled technically as well as informed, helpful, and well-versed.

2.1.3.2 Four star hotels

These are large, formal hotels with above-average amenities and services, including well-appointed rooms, stylish lobby areas, and front desk assistance (Menzies et al., 2011). Room service is typically available 24 hours a day at restaurants. Pools and fitness centres are frequently available, along with valet parking garage service.

Four-star hotels have roomier interiors and meticulously clean public areas and guestrooms. They offer luxurious comfort and high-quality lodging with bathrooms. Service is provided in a more professional manner, and trained staff attends to the needs of the guests. The restaurants offer 24-hour room service for all meals, drinks, and snacks, and the food is of a high calibre (Ottosson and Grahn, 2005).

Expectations for these hotels include a level of luxury perceived in the furnishings, facilities, and equipment in every section of the hotel, according to the research department of the Caribbean Tourism Organization. The bedrooms and bathrooms are larger than at the lower star levels and are adequately en-suite with enough facilities. There is also a high staff-to-guest ratio to ensure that the needs of the visitors are met and that services like 24-hour room service, laundry, and dry cleaning are available (Menzies et al., 2011).

2.1.3.3 Three star hotels

Three star hotels, according to Chan and Mackenzie (2013), are much better in terms of quality and range of amenities than hotels with lower rating classifications because they are built with roomier public areas and restaurants that serve those who are not staying at the hotel. The bedrooms are created to provide a high level of comfort and quality furnishings. Room service

isn't often accessible in this hotel rating, only in exceptional circumstances like requests from business travellers (Menzies et al., 2011). The high-quality dining room and restaurant are often open for breakfast and dinner.

2.1.3.4 Two star hotels

The accommodations in this category of hotels are uncomplicated and pleasant, and the experienced and welcoming personnel offer a simple range of amenities. The hotel is often small to medium-sized and is close to attractions with reasonable prices. The Caribbean Tourism Organization's Research Division asserted that hotels with two star ratings often have small to medium-sized rooms and provide more amenities than those with one star ratings (Menzies et al., 2011). Due to the fact that they offer customers a comfortable place to stay the night, two-star classicization is typically linked with some business hotels. In comparison to one-star service, the workers present themselves more professionally and provide a greater selection of uncomplicated services, including food and drink.

2.1.3.5 One star hotels

Berto (2005) asserts that hotels with a one-star rating are modest but nonetheless offer a reasonable level of comfort. The hotels are neat and well-kept, although they only provide a small selection of amenities and services. One-star hotels are often modest, independently owned establishments with a homey feel. The proprietor and family may offer services on a casual basis (Bone and Ellen, 2005).

There is a good degree of cleanliness, maintenance, and comfort even though the facilities and services provided are limited because some of the bedrooms are not meant to accommodate unsuitable bath/shower rooms.

2.1.4 Origin and History of Landscape

As old as architecture itself is landscape architecture (Dorozhkina, 2018). In the past, planting flowers, shrubs, and trees was done in many different ways around the world for a variety of reasons, including beauty, boundary marking, therapeutic treatment, and other reasons. The

Egyptians started cultivating gardens inside the walled enclosures that surrounded their homes, temples, and palaces during the prehistoric era. HOTREC (2013) asserts that gardens should be designed around rectangular fishponds that are bordered by regular rows of trees. The most well-known structure in Mesopotamia was the hanging garden, which Nebuchadnezzar II built in 605 BC. Full-sized trees were highlighted in this garden, which was situated around the royal complex on earthen terraces raised on stone vaults (Wan & Wan, 2015). For horse-mounted hunting, the Persians and Assyrians both created parks with tall trees. They grew trees that were typically placed in large, bare plains along rectangular walled grades that were irrigated by canals and pools. Since the Persian carpet represents paradise, the gardens served as inspiration for its design (Karolina, 2018).

Colonnaded gardens, which were particularly prevalent in Greece and retained sacred grooves used as the homes for divinities. Roman suburban villas around Rome were where decorative gardening first took off. Homes were connected by open arcades and epistyle, as well as by gardens, pools, and connived gardens. The wealthy lavishly constructed amusement parks like Luculent and Meacennas, which had dining halls, porticoes, and statues. Additionally, the expansive grounds of the Emperor's Hadrious estate near Tivoli were exquisitely manicured amid the hot, dry climate of the desert. This landscape was influenced by the presence of oasis, and the ancient Persian paradise gardens was centered on water. The courts were enclosed and encircled by cool arcades, with trees and shrubs planted and energized by colorful tile work, fountains and pools with an interplay of light and shade, and flowers, fruits, trees, water, and shade arranged in a distinctive composition as in the Tajmahal grades (Polakova, 2012).

For instance, Chinese temples, palaces, and homes were constructed in Asia around courtyards, and potted plants were frequently used to hold flowers and trees. Extensive pleasure gardens with trees, artificial lakes, hills, bridges, and pavilions were also a feature of Peking's imperial metropolis. Chinese and Korean palace, temple, and private home designs are used as inspiration

for Japanese gardens. The structures and garden environments were seamlessly merged. The gardens in Kyoto, which had wooden bridges, gates, pavilions, evergreen bushes, stone lantern sculptures, pools, waterfalls, and rock stone, were well-known. Since then, this style has impacted western landscape architecture and is still practiced to a certain extent in contemporary Japan (Tanja, 2006).

2.1.5 Functions of landscape

In developed environments or as an open space in cities, parks, or other places, landscape can serve a variety of purposes. In order to improve the natural environment and provide natural settings for towns, cities, and buildings, landscape is used. Additionally, it can be applied to improve the surroundings' inhabitants' comfort and health. Additionally, it can be utilized to modify the surrounding or landscape's microclimate. In locations where the topography is erratic, the landscape regulates soil erosion. Additionally, it can be utilized as wind blockers, as well as providing screens and demarcation for various uses inside a particular region. Additionally, landscape can be used to facilitate simple access and circulation on site as well as to create a buffer between peaceful and noisy regions (Andreas, 2016).

2.1.6 Qualities of Landscape

People's view of a natural environment depends on the characteristics and components that make up that environment (Prajal, 2012). For instance, how a room is perceived depends significantly on the light, color, texture, pattern, and material employed in that space. These factors can be used to give direction to the perception that designers want visitors to have when they encounter particular settings. For instance, softer color shades and smooth textures soften or reduce an element's visual density, giving the impression that the space is broader and more open. Similarly, water bodies are not excluded from this as research by Prajal (2012) has shown that features including color, depth visibility, texture, sound, and even its animistic aspects can make water bodies appear larger and healthier.

Landscape design has become more important in recent years as a result of increased understanding of the psychological benefits of the outdoors. This has encouraged the development of locations where people may go to unwind, refresh their minds, or shut out distractions. The art of landscape is said to produce experiences that enliven spirits, broaden perspectives, and revitalize lives. It integrates natural traits, materials, and scenes, therefore it is also an expression of nature. (2003) Nasar and Lin.



Figure 2.4: landscape around the walkways in Elephant hills resort, in Victoria falls, Zimbabwe
Source: Google image, 2019

2.1.7 Elements of landscape

Topographical features like hills valleys and water bodies, cultivated feature such as trees, grasses flower scrubs, constructed feature like building, roads bridges fountains and statues. The fundamental elements of a landscape must be taken into account and offered in a useful way to enhance the restorative properties of such a place in order to create a restorative environment. Understanding the function of some of these components, such as water, as well as their characteristics, properties, and modes of life in such environments as well as the current vegetation, is crucial (Ulrich, 1993).

2.1.7.1 Water

According to a study by Bulut et al. (2010), individuals favour waterfall scenery when it comes to waterscape. An important factor in landscape design is curiosity (Parsons et al., 1998).



Figure 2.5: Paris - Waterfront of the Canal Saint M.

Source: Prajal, 2012

The following factors could play important roles in improving a scene with water:

- Presence of greenery and vegetation at the edges of the water and the immediate surrounding (Le Lay et al., 2008).
- Presence of aquatic life in the water such as fishes have a positive effect in stress reduction (White et al., 2010).
- Water edges with organic shapes mimicking a natural form is desirable (SEÇKİN, 2010). This may exist in form of contours that are irregular or curvilinear in shape.
- Motion of water is one interesting quality of water associated with naturalness (Bulut et al., 2010). Although intense motion of water poses a perception of danger and risk.
- The sound of flowing water is also a restorative quality (Alvarsson et al., 2010).

2.1.7.2 Vegetation

As ecological organisms that embody both real and imagined natural forces, vegetation plays a variety of linked roles in the environment (Wan & Wan, 2015). A place's aesthetic appeal is enhanced by vegetation, which also produces a calming environment. Landscape affects people's emotions and fosters a culture where beauty and elegance are valued by everybody (Foley, 2015)

The restorative qualities of a landscape can be enhanced by using medicinal plants with therapeutic powers.



Figure 2.6: Prague- Slovánský Island
Source: Prajal, 2012

2.1.8 Role of the senses in perception of landscape

2.1.8.1 Smell

According to a study by Magdalena et al. (2013), in addition to sight, the senses of smell and hearing also have a role in how people perceive the landscape. The quality of the air we breathe triggers our awareness of potential threats in the area and alerts us to the presence and quality of scents or odors such as another person's aroma, odour, or scents (Oyetola et al., 2013). Pleasant smells surrounding us lift our spirits, whereas bad smells have the opposite effect (Oyetola et al., 2013). The results of a poll conducted by Magdalena et al. (2013) revealed that the scent of fresh air and herbs is the one that people enjoy the most when they are in a landscape. Table 2.3 shows the sources of smell in a natural environment.

Smell	Source
Natural	Scent of flowers, leaves of trees, grasses, wet soil, dry leaves, and Running water;
Human-body Related	Perfume, Shampoo, Soap, deodorants
Man-made or Environmental	Exhaust from vehicles, dust from construction, smoke, Plant chemical spray, Organic fertilizer, Stagnant water and Cooked food

Table 2.2: sources of smell in outdoor environment
Source: Shahhosseini et al., 2014



Figure 2.7: Prague Alsovo Waterfront
Source: Polackova, 2012

2.1.8.2 Sound

Different feelings, both good and bad, are evoked by sounds. The singing of birds, the roar of the sea, the rustle of the forest, the water, and the trees are just a few of the wonderful sounds that come from the natural world. Despite the fact that wind, industrial machinery, and vehicle noises can be unpleasant (Magdalena et al., 2013). Sound can be calming or upsetting depending on the source and the listener's perspective. Unwanted noise is frequently categorized as noise and can disturb others as well as have unpleasant psychological impacts like hostility, stress, anxiety, and even high blood pressure. However, sounds can also have calming, restorative effects. According to a broad survey by Magdalena et al. (2013), people prefer the tranquil sounds of water and streams, bird buzzing, and tree rustling in landscaped areas. Table 2.4 shows the various sources of sound in outdoor environments.

Sound	Sources
Human	Voice of children playing, Sound of people using the exercise equipment, Footsteps, Normal voice.
Natural	Water fountain, Wind, Dry leaves being crushed, Crickets, Running water, Bird chirping, Rustling leaves, Sound of small manmade waterfall.
Instrumental	Music from the park audio system, People singing with instruments, Mobile ringtone, Speaker's sound of hawker, Music from the people's mobile device, Music from vehicles, Azan.

Mechanical	Car horn, Car engine, Bicycle wheels, Car's traffic, Construction vehicles, Motorbike, and Sound of sprinklers.
------------	---

Table 2.3: sources of sound in outdoor environment
Source: Shahhosseini et al., 2014

2.1.8.3 Touch

Humans can feel pressure, temperature, depth, and materials with their hands. They can also learn about items' textures, shapes, and materials by using their sense of touch (Kaplan, 2001). According to Chen et al. (2009), who evaluated multisensory elements in the landscape, people often prefer touching characteristics in open areas because they let them feel connected to and experience nature. Touch has an effect on human feelings that might result in action or changes in behaviour (Kaplan et al., 1993). Table 2.5 shows the many components of touch outdoors.

Touch	Sources
Natural	Breeze, Water, Grass, green and Dry leaves, rocks and Stone, Soil, flowers and fruits.
Manmade	Furniture

Table 2.4: sources of touch in outdoor environment
Source: Shahhosseini et al., 2014

2.1.9 Components of Landscape Design

There are various elements of landscape design that must be carefully planned and taken into account in the design of any landscape.

2.1.9.1 Space

Space is air or atmospheric volume that is determined by natural forces and human ideas. As it defines the scope of the landscape and scenery of the natural environment, space is a crucial component of a landscape. Less exact and regular enclosures can be found in the fields, meadows, orchards, valleys, dune, forests, plains, lakes, rivers, and oceans. Man's ability to see space is the outcome of his ability to organize, imagine, and interpret what he observes in the natural world.

2.1.9.2 Mass

Space's antithesis is mass. Topographical soil shapes, trees and plants, structures, and water features like lakes or waterfalls can all be considered landscape masses.

2.1.9.3 Light and Shade

Light and shade, should be reflected in the landscape. Therefore, in order to balance the effects of shadows and give a balanced proportion of light and shade, landscape designers need to have a thorough understanding of both natural sources of illumination, such as the sun, moon, stars, and other heavenly bodies, as well as artificial lighting.

2.1.10 Principles of Landscape Design

The basic principle in landscape design deals with the arrangement of the landscape elements. These principles are, unity and variety, balance and rhythm, accent and Contrast, scale and proportion (Rodick, 2012).

2.1.10.1 Unity and variety

A landscape design can be unified by a number of different features, including colour, texture, height, form, growth patterns, lines, and views. The more components and material types there are, the harder it is to create a cohesive landscape. Because so much of nature's creativity is derived from it and does not adhere to rigid geometrical or formal design patterns, natural landscaping allows for greater freedom while allowing for some controlled chaos (CPWD, 2013).

2.1.10.2 Balance and rhythm

Balance is one of the most widely used design ideas in landscapes. Balance simply denotes that everything has equal weight on each side of a focal point. As the eye goes away from the center focal point in an asymmetrical balance, everything is same on both sides. The exact three-dimensional placement of each feature in the actual environment is what gives it rhythm. It can be achieved easily by repeatedly occurring similar features, such as two rows of trees or houses. It seeks to concentrate and guide someone's movement and attention toward a viewpoint or terminal.

2.1.10.3 Accent and contract

The use of accent and contract breathes life into arrangements that otherwise may have been flat and uninteresting. A component that accents other components around it makes them smaller. Contracts in colour can provide accent, but it can be tricky (Rodick, 2012).

2.1.10.4 Scale and proportion

The perceived size of space within the immediate area or scenery is referred to as the landscape's scale. The specified relationship between the sizes of all the components within an element and all the components around a space is known as proportion (Hartig et al., 2003). The overall size of the seat, its proportion to the surrounding trees' sizes, the work space, the lawn area, and other factors all contribute to determining the landscaping area. The flow of people, their focus, order, and timing should all be taken into consideration while planning a landscape (CPWD) (2013).

2.2 Empirical Review

2.2.1 Integrating Nature into the Built Environment

Nature has a favorable impact on humans, either by boosting moods, behaviors, or emotional states or by enhancing concentration and efficiency, according to several studies that have been done and confirmed (Hartig et al., 2003; Prajal 2012). Numerous research on the impact of both the type and quality of a landscape on humans have been conducted by experts in the field. It's also crucial to realize that exposure to natural beauty and landscapes with healthy natural vegetation has a very high tendency to minimize sensations of dread (United Nations World Tourism Organization [UNWTO], 2003).

Contrarily, urban landscapes lack sufficient natural landscape features, and as a result, these surroundings run the risk of exacerbating anxiety, depression, and other detrimental consequences on human health. In particular, in terms of heightened sadness. To lessen the detrimental impacts such artificial environments have on people, it is especially crucial to take into account offering a sizable amount of natural scenery and views in metropolitan areas (Vincent et al., 2010).

Chapter Three

Methodology: Case Study

3.1. Introduction

Prior to delving into the task of formulating a research proposal, it is essential to thoroughly examine established hotel designs. With visitor preferences constantly changing, hotel generations are constantly undergoing evolution. Therefore, when attempting to develop a new approach, it is crucial to consider how designers have tackled these challenges in the past. This allows for the incorporation of successful techniques and avoidance of past errors. The significance of selecting several existing cases for a comprehensive comparative analysis cannot be overstated.

3.2 Case Study Selection Criteria

It was ensured that the selected case studies have a degree of relationship either directly or indirectly with the subject of this research. This is to ensure their relevance to the study. This is not to go back on the pertinence of attending to those fundamental issues that are naturally associated with hotel design. Hotel design is actually a delicate, intricate but exciting undertaking. It is therefore a very expedient undertaking requiring a thorough study and research on already existing three star hotels determining the extent to which green building strategies have been applied. The aim of these case studies is to acquire an understanding of the standards and quality of services and other ancillary facilities, how they should operate and relate, hence gaining adequate experience on the basic principles of a three-star Hotel design.

In the process of selecting case studies for this research, the following criteria was considered:

- Indigenous local hotel: This take cognizance of the fact that the target market is highly localized.
- Foreign hotel: it is important that foreign examples be studied considering the context of the bulk hotels as we they now have their roots on foreign architectural essays. An examination of the

problem solving approaches adopted in foreign hotels is beneficial to the overall program of research.

Case studies were carried out on five hotels namely:

1. Transcorp Hilton Hotel Abuja/Lagos
2. Sheraton (Hyatt Regency) Hotel, Abuja
3. Eko Hotel, Lagos, Nigeria
4. Crowne Plaza Dubai Marina
5. W London Leicester Square- Hotel

3.3 Case Studies

3.3.1 Case Study 1: Transcorp Hilton Hotel, Lagos

3.3.1.1 Description

The Transcorp Hilton-Lagos project site is on a plot of land with a total land area of 5,904.711 m. It is 646,000 square feet in size and was designed by Perkins Eastman. It has a hotel tower and office podium perched atop a three-level podium with a two-level basement. The 19-story landmark tower will be visible from many locations throughout Greater Lagos and will take advantage of the views of the Lagos Lagoon to the north, Victoria Island, and the Atlantic Ocean to the south.

The Transcorp Hilton-Lagos provides the discerning traveler with domestic, interregional, and international accommodations that are comfortable, opulent, and range from standard guest rooms to presidential suites. Each accommodation has been thoughtfully designed to ensure a relaxing and enjoyable stay. Additionally, it provides leisure facilities, fully furnished meeting rooms, and exotic cuisine.

3.3.1.3 Façade

A pedestal with three levels and a two-level basement supports the hotel tower, which is perched above it. The 19-story landmark tower will take advantage of the views of the Lagos Lagoon to the north, Victoria Island to the south, and the Atlantic Ocean to the east.

3.3.1.4 Merits

1. The hotel site is properly landscaped with guest relaxation and recreational facilities and extensive parking spaces properly zoned.
2. The gleaming interior, which has been generously and tastefully decorated, is definitely warm and elegant.
3. The Architectural statement of the hotel is direct; the form has been handled to give the building its own special character and appeal.
4. The combination of steel frames with concrete gives the building a strong and impressive character.
5. Disabled guests were considered by providing prominent ramps and specially designed rooms for them.

3.3.1.5 Demerits

1. The lack of a balcony in the hotel room prevents the visitor from having direct contact with the immediate landscape and environment.
2. The hotel's dependence on mechanical systems for lighting and ventilation accounts for its subpar green building rating.
3. The site of the hotel is too brisk and inhumane for the casual guest and does not allow for people on vacation and tourists to enjoy their stay.
4. The hotel depends so much on mechanical system of lighting and ventilation (it is too synthetic), therefore its green building rating is not commendable.
5. Guest rooms have long double loaded corridors which are not cross ventilated.

3.3.2 Case Study Two: Sheraton (Hyatt Regency) Hotel, Abuja

3.3.2.1 Brief History

This hotel was initially the Hyatt Regency Hotel, Abuja and was managed by Hyatt Hotel Managers International for the owners, Capital Hotels. As a result of disagreement between both parties, the hotel manager had to quit, then, Sheraton hotel managers were invited to manage the hotel, thereby changing the name to Abuja Sheraton. However, the hotel was constructed between 1985 and 1989. It was used in May, 1989, for the African Development Bank (ADB) Conferences in Abuja but was officially opened on the 15th of January, 1990.

3.3.2.2 Location

The Abuja Sheraton Hotel is situated on Ladi Kwadi Way, approximately 39 kilometers (24 miles) from Abuja International Airport. This implies that it was located on the heart of the newly growing Federal Capital Territory.

3.3.2.3 Building Form

The first impression of Abuja Sheraton is that of a truncated pyramidal frustum. However, it would be more appropriate to interpret the structure as an Egyptian Mastaba punctured by holes. This system also attempts to redefine the tower podium concept by encapsulating the podium in the lower part of the Mastaba. The location of the conference hall, kitchen and Luigi restaurant is in the podium extending further from the main tower. As a result of the shape of the tower, the rooms were staggered vertically on top of each other to get equal room and corridor spaces.

Moreover, this irregularity factor in the floor areas allowed only for single loaded corridors with empty spaces in between them which form a courtyard round the whole hotel. The courtyard is housed by the building in a manner that it forms an atrium. More also, the courtyard is divided into two parts by an 8-story bridge which houses the shaft. The sloping sides of the towers are punctured by holes used for the balconies. This creates a feeling of array or voids and adds texture to the form of building.

3.3.2.4 Architecture

The Abuja Sheraton's design is based on a regular square grid. The structural elements of the hotel were also based on square grid which forms a structural unit. These structural units form rooms, and the size of these rooms depends on the number of units used. They range from one unit for the standard bedroom to six for the presidential suites. The walls slant upwards in elevation and are supported by concrete beams and columns

The design of the hotel considers a humane approach to architecture whereby lighting effects were used in the entrance lobby to excite and whet the user appetite. Acrylic skylight was used to infuse light into these areas. The courtyard attempts to subdue the brutal atmosphere of most hotel accommodation tower by trying to bring the guest into the natural and humane perspective.

3.3.2.5 Construction and Materials

The on-site construction technique was predominantly adopted in the Abuja Sheraton Hotel building. This was due to the building's form, which did not allow for pre-fabrication of most parts of the building. Consequently, concrete was used extensively as a construction material.

The exterior finishes of the building are mainly beige, polka dotted 2.5cm main finish and ceramic tiles. These tiles were extensively used in the accommodation tower of the hotel and in the lower parts of the hotel building. Internally, numerous materials were used: matt water-proof wall paper, wood finish, marble tiles, internal railed vermiculite ceiling finishes, carpet finishes etc. Also lighting used in the internal design of the hotel ranged from hollow submerged lighting fixture in the entrance lobby to bed side lamps in the guest rooms.

3.3.2.6 Merits

1. The location of the hotel in serene valleys of Abuja presents interesting and exciting vista.
2. The form of the hotel is so interesting that it charms many guests to the hotel. It allows for cross ventilation and natural lighting.
3. The rooms all have balconies which allow the guests to get in touch with the natural environment.

4. The interior of the hotel is made natural by the introduction of natural plants, fish ponds and lighting effect.
5. The landscaping of the courtyard has a touch of traditional effects with use of indigenous building materials like thatches. The north facing guest rooms are also ideal in order to keep out the intense tropical heat of the area.
6. The number of rooms and restaurant facilities offers guests a wide range of options and satisfaction.

3.3.2.7 Demerits

1. The use of skylights in parts of the entrance lobby, cause areas that are not affected by this feature appear dark and dull.
2. The hotel design is too spread out for the comfort of the guest. This is depicted especially in the juxtaposition of restaurant spaces and conference spaces (Large Foot Print)
3. The atrium is not enclosed, hence, the spaces immediately around and in the courtyard are affected by weather factors.

3.3.3 Case study three: Eko Hotel, Lagos

Location: Victoria Island, Lagos

Architects: Oluwole Olumuyiwa Associates, Lagos

3.3.3.1 History

The hotel was proposed by the Federal Government. After a competition was conducted, the architects, Oluwole, Olumuyiwa were given the go-ahead to design the hotel. The hotel was completed in March 5th, 1977, and was managed by Holiday Inn corporation, thus called Eko Holiday Inn, until 1988 when it was taken over by Meridien and became Eko Meridien Hotel but presently, the hotel is known as Eko Hotel.

3.3.3.2 Location

The hotel occupies a site at Victoria Island, Lagos on the bay of Kuramo River. It is located in the privacy of this bay and is in walking distance of the bar beach. Its location is about ten-minute drive to the city centre and forty minute drive to the Murtala Mohammed International Airport, Ikeja.

3.3.3.3 Form Description

The hotel is based on the tower atop a podium. The tower is a modified rectangular box with 45° trapezoidal extensions on each side. That is, two staggered parallel diagonal shafts joined together by a central rectangular one. The elevators are lit by large curtain walls that span through the whole floors. These curtain walls allow for vistas of the densely built areas of Victoria Island.

There are four fire escapes, one fire escape in each diagonal shaft and two in the central shaft. The rectangular shaft remained the same on all the floors. However, the diagonal shafts, especially the lower shaft: and the junction to the rectangular shaft were changed on different floor levels to form different room types. The pent house restaurant (Shangri-la) is atop the tower, and can be reached by the elevators. The restaurant has two terraces, one overlooking Kuramo waters and the swimming pool, while the other overlooks the office building in Victoria Island. This restaurant houses the water tanks. On the ground floor, are the lobby and a central courtyard. The lobby is not defined by walls but by columns and it has a small man-made waterfall.

3.3.3.4 Construction and Material

The construction used is in- situ construction. No major part of the buildings structure was pre-fabricated. The major construction materials are concrete and sandcrete blocks.

The exterior finish materials is sandtex coating with a very rough finish. The predominant colour is white, while the contrasting colour to white used, is dark brown which is the colour of the

bronze anodized aluminium handrails used in the balconies. The glass fixtures are tinted translucent brown and also have bronze anodized frames.

Several diverse finishes were used in the public areas, hard materials such as marble tile and terrazzo finishes were used. On the walls, a rough finished wall was coated with paint and vermiculite ceiling boards were used in the ceilings in the private areas; the floor finish was rug carpeting, wood finish, white concrete walls, and vermiculite on the ceilings. Planting and lighting fixtures were also introduced to create the feeling of a natural environment.

3.3.4 Case Study 4: Crowne Plaza Dubai Marina

3.3.4.1 Description

The 5-star Crowne Plaza Dubai Marina is located in the cosmopolitan Dubai Marina area, next to Dubai Marina Mall and within direct access to the Marina pedestrian promenade, which borders the waterway lined with vibrant cafes and restaurants. The hotel is in close proximity to the city's business hubs such as Dubai Media City, Dubai Internet City, and Knowledge Village. The hotel rooms have a Guest Room Management System (GRMS) that allows guests to control the temperature, lighting, and heating via a touch panel. Rooms also come with a media system connecting to surround sound via Bluetooth. The meeting and conference rooms are all fitted with audio-visual technology. The architect of the project was the National Engineering Bureau (Liu 2020).



Figure 3.3: View of Crowne Plaza Dubai Marina
Source: google imagery, 2022

3.3.4.2 Façade

Glass curtain walls with aluminum-framed facades, facing a beautiful marina, are incredibly clean and provide a wonderful atmosphere.

3.3.4.3 Materials

In general, internal partitions were created with 20 cm thick concrete blocks or 25 cm thick screens of the same material. The frame type or panel is the continuous glass facade. Elevator cores were constructed using structural walls that were 25 cm thick.

Plasterboard was used to build the interior walls between the rooms, and double metal support structures and plates were used for insulation and soundproofing.

3.3.4.4 Lighting

Both artificial and natural lightning exists. Access to the interior is via a large, high atrium that leads to the bar, the pool, the beach, as well as vertical communication cores that are shared by all floors, stairs, and a lift. The lobby of this atrium offers views of the sea and is well-lit by large skylights on the roof.

3.3.4.5 Occupant Comfort

When one's needs are met, feels strong, protected, supported, and cared for, and is provided with settings that promote wellbeing, one is said to be comfortable at a HOTEL. Although this is obviously a rather subjective and unique concept for each individual, there are some guidelines for design and interior finishing.

3.3.4.6 Aesthetic Appeal

The 5-Star Crowne Plaza Dubai Marina has a beautiful interior that adds to its appealing appearance. It features breathtaking views and superb design.

3.3.4.7 Merits

1. Appealing appearance with stunning dramatic impact that is agreeable to the eye.
2. Large, thoughtfully constructed parking spaces are a prominent feature of the affluent Dubai Marina neighborhood.
3. There is an abundance of space and a sizable interior.

3.3.4.8 Demerits

1. High expense of maintenance.

3.3.5 Case Study 5: W London Leicester Square- Hotel

3.3.5.1 Description

In London's West End Soho neighborhood, near Leicester Square, is the 192-room luxury Starwood hotel known as W London. It is located in the heart of the city's entertainment district and offers international visitors to London a thrilling new vacation spot. In addition to the hotel, the complex has a ten-story building with 200,000 square feet of retail, leisure, and residential space. This space includes a spa, 11 penthouse apartments, and a new 35,000 square foot retail-leisure experience offered by a well-known international brand. It was created by McAleer & Rushe and designed by the renowned architects Jestico + Whiles. Croitoru and Pamfilie (2018).



Figure 3.1.1: street view of W London
Source: google images

3.1.2 Façade

The building's façade will act as a huge, pixelated screen, the first of its kind in the UK, that can be used to project dynamic light installations as part of an innovative new partnership between modern architecture and art. The optically corrected glass of the building's outer skin is treated with a sophisticated ceramic frit to create this arresting visual effect. This allows the glass to "hold" and project the light without obstructing views out of the guestroom windows. The hotel's exterior has been covered in a second layer of frameless glazing that hangs from the building's face like a floating sheer veil and is etched with an abstract, undulating pattern that evokes the folds in a theater curtain and the region's rich filmic history.

3.1.3 Materials

The strikingly opulent interior of W London is enhanced by materials. Spice Market's two floors are decorated with inviting tons of gold, copper, chrome, and wood, and the windows are subtly screened with gold mesh. The dining areas are surrounded by lowslung black leather banquettes, and diners will be seated at cozy booths. A stunning "birdcage" gold spiral staircase and 600

specially created shimmering wok lamps that cover nearly the entire ceiling and emit a lovely low light are other noteworthy design elements.

With an outer glass veil hanging from the eighth-floor level, wall construction provides the facade to the hotel levels. Solid unitized panels with built-in punched windows cover the inner skin. The glass veil is finished to reflect Portland stone and has ceramic frit artwork with a range of patterns and densities. Two or three double- or triple-height recessed curtain walls surround three sizable feature areas.



Figure 3.1.2. Spice Market
Source: google images

3.1.4 Lighting

Hundreds of energy-efficient Barco lights are packed into light fixtures built into the exterior main wall, allowing for movie quality color mixing and rendering to create an endless variety of combinations and effects. An advanced interface inside the hotel regulates the veil's color saturation and light intensity, changing the building's presence as day gives way to night. While W London is calm, cool, and understated during the day, at night the glass veil transforms into an animation of glowing light and may become the largest electronic work of art in London.



Figure 3.1.3.: street view of W London
Source: google images

3.1.5 Occupant Comfort

The hotel's concept of luxury, through its provocative look paired with innovative in-room technology gives guests full control of their stay. Every room at W London is unique. the hotel is the first in the UK to embrace the full Digi Valet technology – one of the most advanced tablet-based systems in the industry which allows each guest to be in control of their stay right from check-in. Upon entry, music and lighting greet the guest to offer a truly immersive and memorable stay

3.1.6 Energy Efficiency

An energy-efficient building creates comfortable living conditions inside the dwelling with the least possible amount of energy consumption maximizing efficiency in the use of resources.

3.1.7 Aesthetic Appeal

A sophisticated ceramic frit applied to the optically corrected glass of the building's outer skin allows it to 'hold' and project light without obstructing views outwards, making it attractive. This results in beautiful interiors and a striking visual effect.

3.1.8 Merits

1. It has a striking visual effect which is aesthetically pleasing.
2. Effectively planned with good serenity adding to the value of its environment.
3. The landscape has a distinctive character with a positive effect.

3.1.9 Demerits

1. The parking facilities provide limited space for parking.
2. Interior space allocations are not large enough.

Lead City University Ibadan DO NOT COPY

Chapter Four

Site, Project Analysis and Design Synthesis

4.1 Study Area

This section discusses the preliminary design proposal and the design decisions taken to arrive at the proposed restoration resort design. The solution for the proposed design is based on the space requirements, case studies, site location characteristics and the application of biophilic design elements in Architecture to ensure user wellness and sustainability.

4.1.1 Site Location and Description

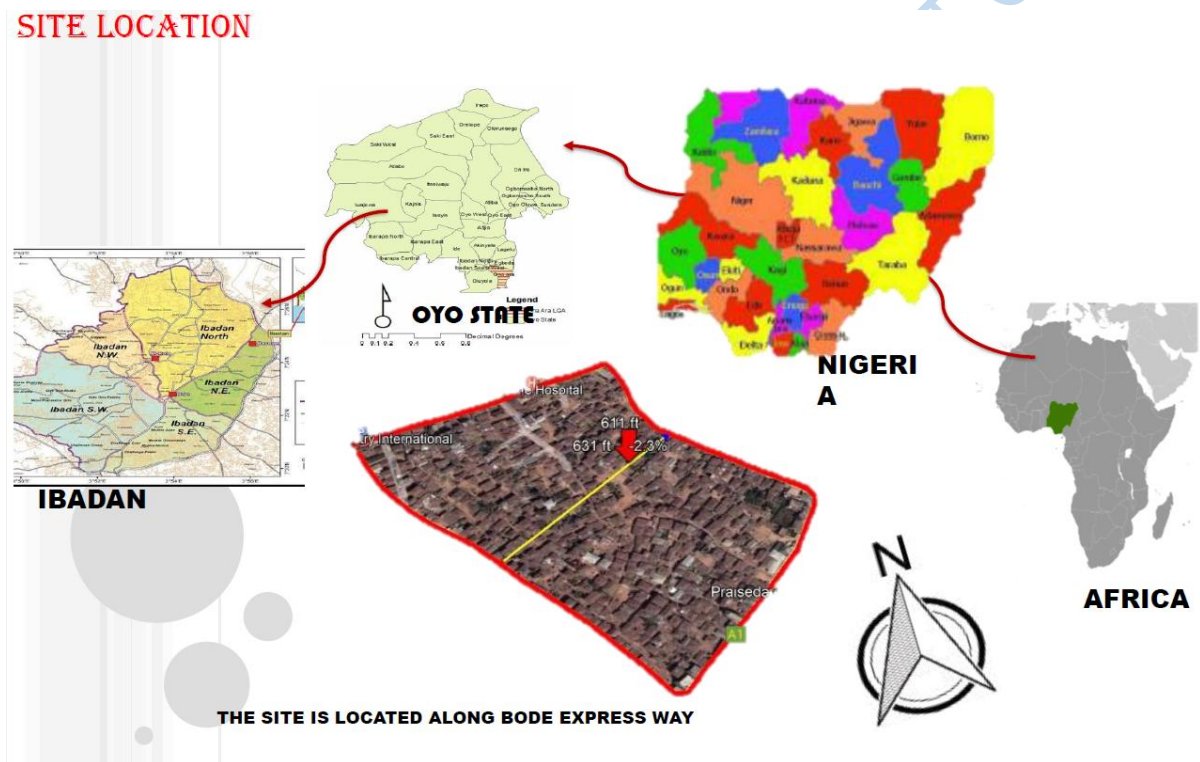


Fig 4.1 showing Site Location
Source: Authors Fieldwork



SECTION B-B
 Fig 4.2 showing Site Section
 Source: Google Earth

4.2. Project Analysis and Design Synthesis

4.2.1 Design Aim

The aim of this proposal is to design a 5-star hotel in Lekki free zone that will provide excellent facilities and cater for all categories of users, creating a world-class hotel that will attract people from within and outside the country as a result of its unique design, facilities and services.

4.2.2 Brief Development

The design evolved based on an analysis of all the necessary spaces, the activities to be carried out in each space, potential noise levels in each space and privacy. All these options influenced the site and building zoning, which in turn will form the building plan and layout.

SITE ZONING

PLAN ZONING

Design Programming Spaces will be analyzed and their functions will be arranged according to simple zoning pattern. These patterns subdivide the site into the following classifications: - The Public areas - The Semi Public areas - The Private areas All these three classifications will be further subdivided into more detailed groupings.

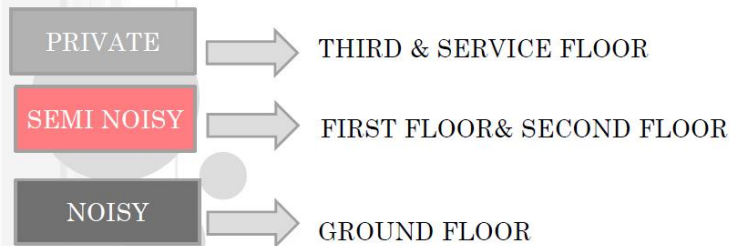


Fig 4.3 showing the Zoning details
Source: Authors Fieldwork

BUBBLE DIAGRAM

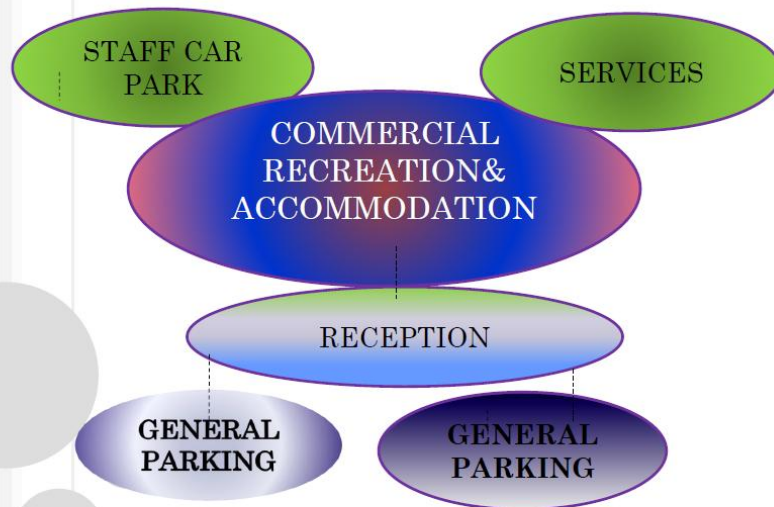


Fig 4.4 showing the Bubble Diagram
Source: Authors Fieldwork

FLOW CHART

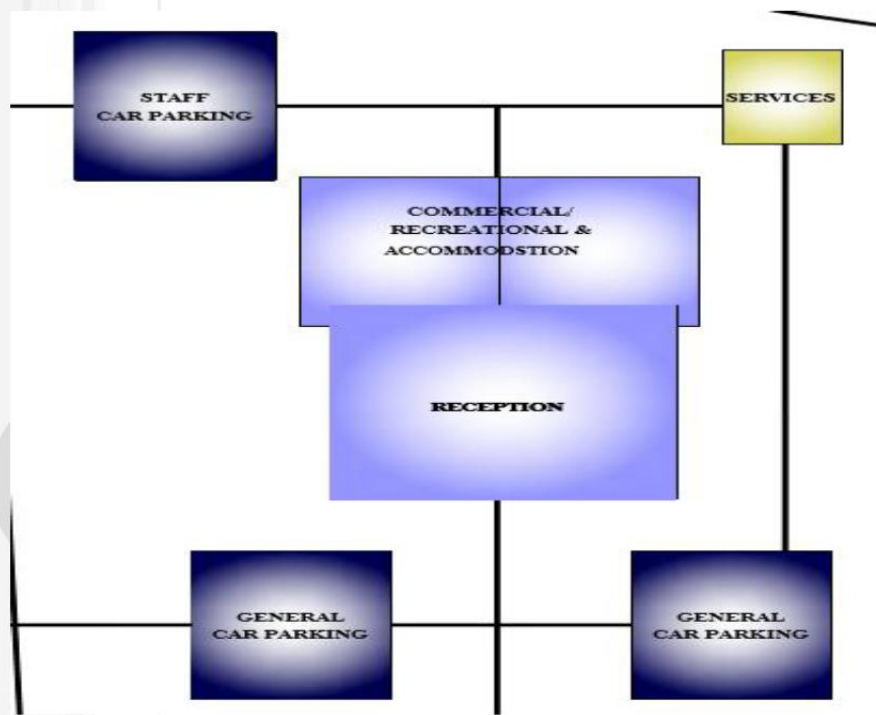


Fig 4.5 showing the site Flow chart
Source: Authors Fieldwork

4.2.3. Design Criteria

Criteria considered in the design of this hotel include:

4.2.3.1 Aesthetics

The design will be made to perform its function by allocating adequate spaces to standards, efficient allocation of building components that will make the design classical.

4.2.3.2 Accessibility

Accessibility involves the provision of suitable and appropriate means of navigation in, out and within the site. The pedestrian route should be clearly defined and separated from vehicular.

4.2.3.3 Lightning

The appropriate orientation will be used to enhance the natural lightning to where necessary in the building with less use of artificial methods of lightning of the spaces.

4.2.3.4 Functionality

The design will be made to perform its function by efficient allocating of spaces to standards.

4.2.3.5 Services

This services includes firefighting equipment, water services, the general mechanical and electrical installations that will be provided.

4.2.3.6 Ventilation

The appropriate orientation will be used to enhance the natural ventilation in the building.

4.2.4. Conceptual Development

4.2.4.1 Site Concept

The hotel's site plan was designed with a naturalistic and flexible approach to blend the building with its surroundings. The goal was to create a harmonious coexistence between the architectural design and the natural elements. The building was placed at the center of the site, surrounded by green areas, driveways, walkways, car parks, beach and other recreational facilities, enhancing aesthetics and fostering a connection between the built and natural elements.

To ensure easy accessibility, access and exit points were provided for vehicles and pedestrians. Lay-bys were integrated to facilitate smooth traffic flow, and delivery vans were given a dedicated driveway behind the building to minimize disruptions to the main entrance. VIP parking lots were discreetly placed on the left side, creating a serene work environment. A bicycle parking system was also included to encourage eco-friendly commuting options.

Overall, the university bookshop's site plan seamlessly blends the building with its natural surroundings, resulting in a functional and aesthetically pleasing space. The integration of green areas, parking facilities, waste management, safety measures, and sustainable practices demonstrates a holistic approach, creating an exceptional site for the hotel that offers a welcoming and inspiring space for all visitors and staff.

4.2.4.2 Building Concept

The hotel's design concept follows the circular and flexible architectural style, which emphasizes the unity of form and function. This approach blends aesthetics and practicality to create an innovative and dynamic space that caters to the needs of students, faculty, and visitors. This

design enables unconventional spatial configurations that maximize efficiency and flexibility, enhancing the overall experience.

The key elements of the design concept include a meticulously planned interior layout that prioritizes traffic flow, easy access to various sections, and user-friendly navigation. The structural components will serve dual purposes, such as display units doubling as storage spaces, creating a seamless blend of aesthetically pleasing forms and functional elements.

The building's exterior will showcase cubist-inspired elements, with facades featuring geometric patterns and playful use of materials, capturing the essence of the cubism style. Inside, different areas will be designated for specific function. The design incorporates ample natural light through curtain walls, creating an engaging and energy-efficient environment. The ventilation will be optimized using the stack effect, allowing fresh air to enter through windows and curtain walls and escape through ventilation blinds positioned at the atrium wall.

The design will be flexible, allowing for adaptability to future changes in bookshop requirements and trends, ensuring longevity and relevance. Overall, the integration of the cubism architectural style with thoughtful spatial considerations will transform the hotel into an inspiring space that fosters a love for nature and community engagement.

4.2.5. Space Allocation

The proposed Three Star Hotel will be a tourist attraction center, a relaxation spot for its users, it will also provide employment opportunities and improve the social economic value of the state.

The minimum required standards for a functional, internationally accepted hotel facility will be maintained.

Hence in conforming to a set standard, spaces to be provided includes:

- a) Security post
- b) Entrance porch
- c) Reception
- d) Waiting
- e) Circulation area
- f) Minimart

- g) Restaurants
- h) Bar
- i) Gym
- j) Presidential suite
- k) Pent-house
- l) Standard double room
- m) Deluxe double room
- n) Queen size room
- o) Executive suite
- p) Kitchen
- q) Conference room
- r) Hotel Staff Area
- s) Meeting room
- t) Business Centre
- u) Club
- v) Toilet
- w) Gift shop

SPACES	NUMBER	SIZES	SPACES	NUMBER	SIZES
•STANDARD DOUBLE ROOM	96	32SQM	RECEPTION	1	80SQM
•DELUXE DOUBLE ROOM	224	40SQM	•WAITING	1	150SQM
•QUEEN SIZE ROOM	160	54SQM	•ELEVATORS	8	6SQM
•EXECUTIVE SUITE	64	60SQM	•ESCALATORS / STAIRS	-	112SQM
•PRESIDENTIAL SUITE	18	96SQM	•ENTRANCE PORCH	1	120SQM
•PENT HOUSE	25	120SQM	•HEALTH CENTRE	1	450SQM
•M.D AND GM'S CABIN	2	150SQM	•SPA	1	250SQM
•ADMIN OFFICE	1	180SQM	•GYM	1	200SQM
•MEETING ROOM	10	60SQM	•MINI MART	2	150SQM
•OPERATION STORE	-	120SQM	•GIFT SHOP	1	70SQM
•TOILET	60	32SQM	•COMMUNICATION ROOM	1	60SQM
•GROCERY LOADING AREA	1	300SQM	•RESTAURANTS	3	250SQM
•POWER BACKUP AREA	1	180SQM	•BAR	3	130SQM
•EMPLOYEE CHANGING ROOM	2	48SQM	•GARBAGE DISPATCH	1	100SQM
•HOTEL STAFF AREA	1	150SQM	•SALON	3	48SQM
•SECURITY MONITORING ROOM	1	54SQM	•SWIMMING POOL	6	200SQM
•KITCHEN	1	460SQM	•ATM	3	4.2SQM
•STORAGE	-	150SQM	•INTERCOM AND SERVER ROOM	1	80SQM
•BABY SITTING AREA	1	200SQM	•PANTRY	26	36SQM
•CONFERENCE ROOM	3	140,215 & 275SQM	•LAUNDRY ROOM	1	280SQM
•LOBBY	-	20SQM PER COMMUNAL AREA	•TENNIS COURT	2	300SQM
•HOUSE KEEPING	1	150SQM	•VOLLEYBALL	1	250SQM
•FURNITURE STORE	1	250SQM	•BASKETBALL	1	300SQM
•DELIVERY SERVICE	1	200SQM	•MINT GOLF	1	350SQM
•BUSINESS CENTRE	6	150SQM	•CAR RENTAL	1	450SQM
•CLUB	1	600SQM	•CASINO	1	300SQM
•MAIL / POSTAGE SERVICE	1	60SQM			

4.2.6. Construction Methods and Materials

In the design of this project, utmost consideration was given to sustainability by using eco-friendly materials and construction methods. Various factors were considered in the selection of these materials, such as aesthetics, durability, climate, availability, functionality, and compliance with regulations and bylaws.

Substructure: The reinforced concrete used in constructing the substructure of the ensures a robust and stable foundation.

Landscape: To enhance the appeal of the outdoor space and promote eco-friendliness, the landscape design effectively incorporated precast concrete interlocking stones, concrete curbs and green areas.

Shading Device: Utilizing aluminum composite panel boards for covering steel substrates is an extremely effective technique to curtail heat gain and enhance energy efficiency via shading.

Walls: The hotel walls consist of a combination of concrete blocks, columns, and glazed curtain wall systems. The internal partitions also feature glass to facilitate the flow of natural light and create an impression of openness.

Wall finishes: To ensure a truly healthy indoor environment, Airlite paint needed to be used on the interior walls. This superior paint not only enhances aesthetics, but also provides vital protection against mold, microbes, and germs, thereby significantly improving the overall well-being of all occupants within the space.

Window: in a bid to achieve adequate internal daylight illumination and ventilation, large casement was used in office areas, louver windows were integrated in the upper and lower panel of the glass curtain walls to aid ventilation through stack effect.

Lift and Stairs: steel assembled stairs will be used to access the first-floor section of the bookshop. Also, glazed panoramic lift was adopted to help people with move between floors.

Floor Structural System: waffle grid floor system was adopted due to its effectiveness in such situations.

Floor Finishes: In choosing the flooring materials for the store area, sustainability was undeniably a crucial factor. The options that were ultimately selected were laminate flooring, PVC tiles, and polished concrete. These materials were painstakingly chosen for their exceptional durability, low maintenance requirements, and visually appealing appearance.

Door: The hotel design incorporates various types of doors, including aluminum and glass doors, wooden panel doors, and fire-rated exit doors. These doors were deliberately selected to ensure optimal safety, security, and convenient accessibility throughout the shop.

Ceiling: ceiling materials were strategically used in each space. A majority of the spaces possess the POP false ceiling while 600mm x 600mm gypsum ceiling boards were applied at other areas.

4.2.7. Building Services

The design will incorporate mechanical, electrical, and plumbing services that prioritize functionality, efficiency, and safety. These services will be tailored to meeting the diverse needs of visitors, staff, and protection of valuable assets of the hotel. Each floor will be equipped with Electrical Panel Rooms that house essential components for seamless power distribution and easy maintenance.

Power is supplied to the building from the existing university IBEDC connection which is complemented by solar powered inverters.

A generous ceiling duct of 900mm will be incorporated to ensure optimal space utilization and simplifies maintenance procedures for various services. A discreet duct measuring 1200mm will also conceal water supply, sewage pipes, and inspection chambers, while a panoramic lift with adjacent doors ensures accessibility for all individuals.

Carefully selected artificial lighting fixtures are installed on the false ceiling soffits, suspended floor slab soffits and at the external areas to create a harmonious ambiance within and outside the hotel.

The fire suppression system, will use the FM-200 (HFC-227ea), which extinguishes Class A, B, and C fires without leaving any residue or water behind, safeguarding valuable assets and promoting sustainable practices. In addition, fire hydrants are provided at recommended distance at the car park area to cater for external fire accident.

Chapter Five

Conclusion

5.1 Project Appraisal

5.1.1 Construction Method and Material

The location of the facility will impact the material and building procedure. Hotels are supposed to be built using robust, modern building materials since they hold a lot of people and activities. All structural work and configurations should be handled by a professional structural engineer registered with COREN, as designs for columns, beams, reinforcements, and other elements will be required. A variety of evaluations will also be required to assess, among other things, the facility's safe bearing capacity for soil and the influence of wind load. Reinforced concrete and steel must be the principal structural materials in the design. Thermal insulation, acoustic design, and other features of finishing will be considered in the selection of finishes.

A. Operations Prior to Construction

Prior to starting construction work, there are several important activities that the contractor and other relevant agencies need to carry out. These activities include evaluating the health and safety of the project, delivering on-site documentation, providing facility access, and ensuring security. In order to ensure that all parties involved are aware of the processes for contractor submittals, sampling and testing, construction surveys, inspections by outside agencies, payment requests, claims and disputes, unforeseen job conditions, and change order requests, it is crucial to hold a preconstruction conference.

B. Substructure

The majority of the building's substructure is made up of the foundation. The soil at the location is sandy; it was recovered from the sea. Because of the soil properties, a standard pile foundation would be employed in this circumstance. The foundation materials' quality will provide chemical resistance and enough compressive strength, assisting in transporting the weight of the building

without any sort of differential settling. The substructure stage is largely concerned with the following operations:

Site preparation: To provide space for construction operations, all barriers in the area where the structures will be placed must be removed. All plants must be removed from the building site.

Hoarding on a site: A perimeter barrier will be created around the property to boost security and protect supplies and equipment. The hoarding will be made of corrugated galvanized zinc sheets that will be affixed on timber frames.

Topsoil: Dredged from the sea, the topsoil covers the area of the land where the buildings are located. The area in need will import top soil for use in landscape planting.

Setting Out: The process of transferring dimensions from architectural designs to the actual site is known as setting out. When putting out the structures, the existing road that acts as a reference point for the buildings must be considered. Setting out with a theodolite is essential to obtain a better level of precision than with other procedures.

Foundation: When the consultants have finished and confirmed the layout. Taking into mind the soil carrying capacity test, the structural engineer must employ machinery to the desired depth.

Hard-core filling: The hard-core should be weathered rock 300mm thick. It should be leveled and compacted thoroughly.

Damp proofing: Three plies of bituminous felt should be used to cover the damp-proofing material over the foundation area. Water capillarity to the floor slab is forbidden.

Casting of the ground floor slab in situ: The thickness of the ground floor slab will be determined by the structural engineer. The floor slab must be reinforced. The structural engineer must study and approve the work before it can begin. Following the preparation of the head, concrete will be placed on top of it, with the difference between it and the natural ground level measured by comparing the approach elevation level to it.

C. Superstructure

The building's construction will be built of concrete. Reinforced concrete will be used to build columns, beams, and slabs. Use light, non-flammable sandcrete barriers for the walls. The floors are usually coated with non-slippery vitrified floor tiles of various materials that are textured in different areas. The ceiling as well as the doors will be fire rated. There will be fire-resistant coatings. Automated firefighting equipment, on the other hand, will augment firefighting activities. The superstructure is made up of five major components: the ceiling, walls, doors and windows, floors, and roof.

Floors:

The floor's criteria as a structural member should be satisfied, according to the structural specification. It should be sturdy enough to bear pressure while still keeping moisture out. It should be able to absorb heat and sound, be fire resistant, be easy to maintain, and provide good appearance, comfort, safety, and cleanliness, among other benefits. The floors are built of reinforced concrete floor slabs, and they are finished with PVC tiles, marble tiles, vitrified tiles, ceramic tiles, and cement screed.

Walls:

The walls contribute significantly to the building's image and look. Glass curtain walls will be utilized mostly on the exterior and should be designed to be both visually beautiful and resistant to wind, dust, and animals. The most important features are strength and stability, damp resistance, heat and sound insulation, and fire resistance. Internal and external walls will be built with 225mm sandcrete hollow blocks. Some of the restroom walls will be made of hollow 150mm sandcrete stones. Stair walls should be built of thick 170 concrete to function as fire barriers and make it easier and safer for individuals to exit the building in the case of a fire.

Windows and doors:

The height of both internal and external doors will be 2100mm, and the corresponding widths will be 750mm, 900mm, 1200mm, 1500mm, and 1800mm.

Ceiling:

New ceiling materials, ranging from dry to wet, have emerged in recent years. The majority of areas will have suspended ceilings for a variety of reasons, including housing enormous light fixtures; all specifications must be fitted in line with the architect's pattern standards.

Roof:

A roof must meet the following standards in order to function: strength and stability, durability, fire resistance, and, on occasion, sound insulation, lighting, and ventilation. The building approach employed in each unit will be determined by the span and type of the unit. The roof will be composed of flat concrete as well.

5.1.2 Building Services

In order to use the building as efficiently as possible, utility services must be offered. Circulation, ventilation, lighting, water supply, electricity supply, sewage disposal, and fire protection are among the most important of these.

Circulation

This is how individuals go from one location to another on the site. The planned project includes vehicle and pedestrian circulation access. Vertical and horizontal movement is unavoidable in hotel construction. This design includes provisions for transferring people and equipment between levels. Because circulation is an important concern in hotel design, large circulation areas are given throughout the hotel for simple and free-flow movement of staff and guests.

Ventilation

Natural or artificial/mechanical ventilation may be used in most cases. Artificial ventilation is the process of treating the air in an indoor setting to establish and maintain the proper temperature, humidity, and air movement criteria. Natural ventilation uses an effective temperature differential or wind action to move air. The hotel will be cooled and ventilated using both natural and artificial ventilation. Artificial ventilation is provided by combining a central air conditioner with extractor fans.

Lighting

In the design of a hotel, lighting is an important factor to consider because of its physiological and psychological effect on people. The sense of wellbeing associated with day lighting and the orientation that comes with being connected with the exterior. The hotel is designed to have access to the natural daylight.

Water Supply

By connecting through the available water mains from the dedicated water reservoirs built to serve the Hotel building as a whole, the direct water supply system will be used. To ensure that the building always has access to water, a borehole and an electricity-operated pump must be provided. For various distributions, storage cisterns must be placed where they are needed.

Electrical System

The building will be served by the turbine power lines from the Eko Atlantic power generation. A distribution network must be set up on the property to supply the necessary power to every floor and area. The wiring system must be conduit, carefully planned, and wired in accordance with all electrical engineer and services engineer specifications. There must be high conductivity and good resistance in the wire cable type. Additionally, a backup power source (generator) will be available to meet the demand for electricity in the event of a power outage. Whenever there is a power outage, the generator automatically kicks in.

Fire Protection

Active and passive precautions will be taken to effectively put out fires in the event of an outbreak. Active precautions are systems that are automatically deployed in the event of fire and they include the installation of heat-activated sprinklers which control a fire at its source through the release of discrete volumes of water sufficient to extinguish a blaze. Other important fire safety measures include convenient and well-marked exits, smoke and heat detectors, smoke and fire alarm systems, water spray extinguishers, CO₂ extinguishers, etc. Passive precautions are construction solutions in the building and its components that will help in reducing the spread of fire. These include minimum structural sections, casings and coatings, installation of fire doors and windows, construction of supporting floors, etc.

Sewage

Disposal Access is given to facilities for the handling, storing, and collection of trash in order to facilitate frequent collection. The buildings are in a good location, have good ventilation, and adhere to all fire safety and public health regulations. The users must be made aware of the proper way to dispose of waste, and the waste must be disposed of appropriately. Additionally, waste is collected separately on each floor and transferred to a collection point on the ground floor in a big container. Every floor has a garbage chute, and the ground floor serves as the collection point. There are also incinerators available there.

Acoustic

The most critical factor in design is good acoustics. In order to achieve a specific room sound, the basic size, shape, and finish materials of a given space must be determined, as well as the positioning and design of surfaces that reflect and absorb sound. These requirements are based on the room's intended use and occupancy. **ix. External Works**

The external works, such as sewage treatment plant, curbs, soft landscaping, and trend landscaping, will start once the external scaffold and the good hoist have been completely removed, the tower cranes dismantled, and the floors at crane position have been closed in.

Plant

Lawns, trees, shrubs, ground cover, and seasonal planting are all examples of plant designs. In order to improve the environment and aid in the fight to contain and eradicate harmful pathogens and pests, planting should be done as much as possible.

Roadways and Sidewalks

In general, the project will include new pavement for the roads, sidewalks, and curbs; the physical design department of the Eko Atlantic project will be consulted on this.

Drainage

All storm water runoff must be gathered on site and drained underground. Drainage away from buildings must be accommodated for in area grading. By reducing paved and other impervious surfaces, runoff can be reduced.

5.2 Conclusion and Recommendation

The thesis sought to investigate the current situation of tourist facilities in Lagos, Nigeria and to identify key design considerations influential in designing a sustainable and resilient tourist facility. It also explored how these considerations could be effectively integrated into the design of the proposed hotel building. In summary, the study identifies

- Spread awareness on sustainable tourism.
- Support legislation that promotes sustainable tourism

- Building designs that support visually pleasing structures, outdoor spaces, decent internal flow, and proper orientation are necessary for a respectable environment, efficient service, and comfortable lodgings.
- preserving indoor comfort by using thermally responsive materials, especially on radiation-exposed surfaces like roofs and walls.
- Verandas, balconies, and shady components such as vertical fin walls and horizontal overhangs should be used.

Each of the aforementioned factors that this study analyzed will increase tourism's sustainable growth if they are put into practice. The report shows that every country on the globe depends on the tourism industry. It involves more than just individuals traveling for vacations. It is significant since it has the potential to increase a country's GDP. If their resources are properly utilized, Lagos has a lot of tourist potential for the economy to grow. Everyone needs to be aware of shifting trends in hospitality. There are a few basic trends in the hospitality industry that marketers should be aware of, such as the growing usage of virtual reality tours to promote hospitality services, a focus on customization, and the integration of brand awareness into hotel design. Both the government and the people of Nigeria should be informed. The government should enact laws that will control the expansion of hotels in Nigeria. It is important to advertise hotels that meet standards that are recognized globally. No one should be allowed to operate with a license that falls below the minimal standards created in accordance with international laws.

Reference

- Chan, B. & Mackenzie, M. (2013). Manual on Module II: Introduction to Hospitality. Hong Kong: The Government of the Hong Kong Special Administrative Region.
- Diana, F. (2014). Comparative Analysis of Hotel Classification and Quality Mark in Hospitality. *Journal of Tourism and Hospitality Management*, 2, (1), 26-39
- Tahir, S. & Satinder, P. S. (2017). Hotel Classification Systems: A Case Study. *Prabandhan: Indian Journal of Management*, 67(1), 52-64.
- United Nations World Tourism Organization [UNWTO]. (2003). Quality in tourism. Quality Support Committee at its sixth meeting, Varadero, Cuba. Retrieved from <http://sdt.unwto.org/en/content/quality-tourism>
- Vincent, E., Battisto, D., Grimes, L. & McCubbin, J. (2010). The effects of nature images on pain in a simulated hospital patient room. *Health Environments Research & Design Journal* 3(3), 42-55.
- Hartig, T. (1993). Nature experience in transactional perspective. *Landscape and Urban Planning*, 25, 17–36.
- Hartig, T. (2007). Three steps to understanding restorative environments as health resources. In C. Ward-Thompson & P. Travlou (Eds.), *Open Space: People Space*. New York: Taylor and Francis.

Hartig, T., Evans, G. W., Jamner, L. D., Davis, D. S. & Gärling, T. (2003). Tracking restoration in natural and urban field settings. *Journal of Environmental Psychology*, 23,109–123.

Mandali, S. (2013). Chapter 2 –Classification of Hotels. S.P MANDALI'S WE SCHOOL.

Welingkar Education Retrieved from

<http://elearning.nokomis.in/uploaddocuments/Front%20office%operations/chp%202%20%E2%80%93%20Classification%20of%20Hotels/Summary/Chapter%202- Classifications%20of%20Hotels.pdf>

Rodick, S. (2012). Influence of an Outdoor Garden on Mood and Stress in Older Persons. *Journal of Therapeutic Horticulture*, 13:13-21.

McCormick, D., Sayah, A., Lokko, H., Woolhandler, S. & Nardin, R. (2012). Access to care after Massachusetts' health care reform: a safety net hospital patient survey. *Journal of Genetic Intern Medicine*. 27(11), 1548–1554.

Desjarlais R., Eisenberg L., Good B. & Kleinman A. (1995). *World Mental Health: Problems and Priorities in Low Income Countries*. New York: Oxford University Press.

Menzies, D., Renata, A. & Whaanga-Schollum, D. (2016). Connecting eco-systems and belief systems through regeneration and innovation. *X-Section Journal*, 6(1), 98105.

Ottosson, J. & Grahn, P. (2005). A comparison of leisure time spent in a garden with leisure time spent indoors: On measures of restoration in residents in geriatric care. *Landscape Research*, 30(1), 23-55.

Dorozhkina, E. A. (2018). Forms of landscaping modern architectural environment. *IOP Conference of Material Science Engineering*. 451 012168.

- Bone, P. F. & Ellen, P. S. (2005). Scents in the market place: Explaining a function of olfaction. *Journal of Retailing*, 75(2), 243-262
- Berto, R. (2005). Exposure to restorative environments helps restore attentional capacity. *Journal of Environmental Psychology*, 25(3), 249-259.
- Berto, R. (2014). The Role of Nature in Coping with Psycho-Physiological Stress: a Literature Review on Restorativeness. *Journal of Behavioural Sciences. (Behav. Sci.)*, 4:394–409; doi: 10.3390/bs4040394.
- Alvarsson, J. J., Wien, S. & Nilsson, M. E. (2010). Stress recovery during exposure to nature sound and environmental noise. *International Journal of Environmental Research and Public Health*, 7, 1036-1046.
- Foley, R. (2015). Swimming in Ireland: Immersions in therapeutic blue space. *Health & Place*, 35, 218-225.
- SEÇKİN, Y. Ç. (2010). Understanding the relationship between human needs and the use of water in landscape design. *ITU A|Z*, 7(1), 1-17.
- White, M. P., Smith, A., Humphries, K., Pahl, S., Snelling, D. & Depledge, M. H. (2010). Blue Space: The importance of water for preference, affect and restorative ratings of natural and built scenes. *Journal of Environmental Psychology*, 30, 482– 493.
- Magdalena, S., Agnieszka, W., Daria, L. & Joanna, M. (2013) non-visual perception of landscape – use of hearing and other senses in the perception of selected spaces in the city of Poznan. *Teka Kom. Arch. Urb. Stud. Krajobr*, 9, 2, 68-79
- Oyetola, S. A., Adebisi, G. O., Onuwe, J. O. & Salihu, S. (2013). Reducing Stress Levels through Landscape; a Study of Senior Staff of the Federal University of Technology, Minna, Nigeria.

IOSR Journal of Environmental Science, Toxicology and Food Technology (IOSR-JESTFT), 4(4), 10-17.

Kaplan, R. (2001). The Nature of the View from Home Psychological Benefits. *Environment and Behaviour*. 33, 4, 507-542.

Kaplan, R. & Kaplan, S. (1989). *The Experience of Nature: A Psychological Perspective*. New York Cambridge University Press.

Kaplan, S. (1995). The restorative benefits of nature: towards an integrative framework. *Journal of Environmental Psychology*, 15:169–182.

Kaplan, S., Bardwell, L. V. & Slakter, D. B. (1993). The museum as a restorative environment. *Environmental Behaviour*. 25:725–742.

Chen, B., Adimo, O. A. & Bao, Z. (2009). Assessment of aesthetic quality and multiple functions of urban green space from the users' perspective: The case of Hangzhou Flower Garden, China. *Landscape and Urban Planning*, 93(1), 76-82.

Central Public Works Department (CPWD) (2013). *Integrated Green Design: for Urban and Rural Buildings in Hot-Dry Climate Zone*. New-Dehli, India: Director of General, Central Public Works Department.

Hotels, Restaurants, & Cafés in Europe [HOTREC]. (2013). *European Hospitality Quality*. Retrieved from <http://www.hotrec.eu/policy-issues/quality.aspx>

Wan, N. M. & Wan, M. R. (2015). Evaluating Natural Elements Potential in Urban Landscape. *Sustainable urban landscape*. 43(6), 11-23

Karolina, D. (2018). Therapeutic Landscapes. *Health & Place*, 9, 83–93.

- Polačkova, L. (2012). Means of landscape architecture in the urban public space of Rome, Paris and Prague. *Mende Brun*, 60(8), 281–298
- Tanja, S. (2006). Urban landscape as a restorative environment: preferences and design considerations. *Acta agriculturae Slovenica*, 87(2), 325-332
- Parinaz, M., Mojtaba, P. & Mehdi, S. (2017). Investigating the significance of landscape in designing library by emphasizing on the enhancement of learning. *Housing and Building National Research Center HBRC Journal*, 13:217–222
- Kara, B. (2013). Landscape design and cognitive psychology, *Procedia-Social Behavioural Science*. 82, 288–291.
- Lee, K. D. (2012). Oh, A landscape ecological management system for sustainable urban development, *APCBEE Procedia* 1, 375–380.
- Andreas, S. H. (2016). Understanding recreational landscapes; developing a knowledge base on outdoor recreation monitoring in Swedish coastal and marine areas. Avdelningen för Kulturgeografi Institutionen för Ekonomi och samhälle Handelshögskolan vid Göteborgs universitet Viktoriagatan 13 405 30 Göteborg
- Prajal, P. (2012). The role of water as a restorative component in small urban spaces.
- Nasar, J. L. & Lin, Y. H. (2003). Evaluative responses to five kinds of water features. *Landscape Research*, 28, 441–50.
- Ulrich, R. S. (1979). Visual landscape and psychological well-being. *Landscape Research*, 4:17–23.
- Ulrich, R. S. (1981). Natural versus Urban Scenes Some Psychological Effects. *Environmental Behaviour*. 13:523–556.

Ulrich, R. S. (1986). Human responses to vegetation and landscapes. *Landscape and Urban Planning*, 13:29-44.

Ulrich, R. S. (1993). Aesthetic and Affective Response to Natural Environment. In *Behaviour and the Natural Environment*; Altman, I., Wohlwill, J.F., Eds.; Plenum: New York, NY, USA, 1983; 85–125.

Ulrich, R. S., Robert, F. S., Barbara, D. L., Evelyn, F., Mark, A. M. & Michael, Z. (1991). Stress recovery during exposure to natural and urban environments. *Journal of Environmental Psychology*, 11(3), 201-230.

Bulut, Z., Karahan, F. & Sezen, I. (2010). Determining visual beauties of natural waterscape: a case study of Tortum Valley (Erzurum/Turkey). *Scientific Research and Essay*, 5(2), 170–182.

Le Lay, Y. F., Pie'gay, H., Gregory, K., Chin, A., Dole'dec, S., Elozegi, A., Mutz, M., Wyzga, B. & Zawiejska, J. (2008). Variations in cross-cultural perception of riverscapes in relation to in-channel wood. *Transactions of the Institute of British Geographers*, 33:268–287.

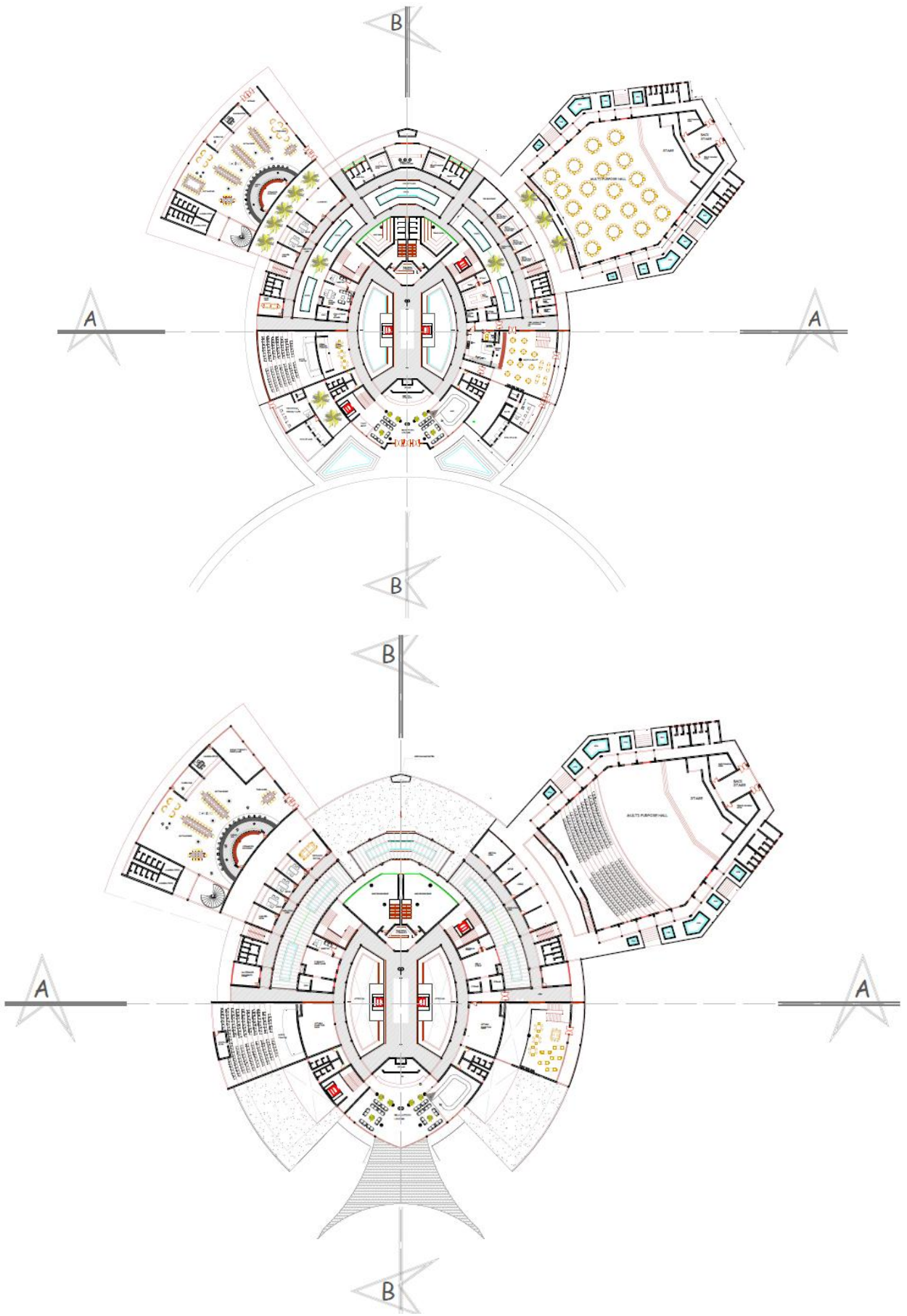
Parsons, R., Tassinary, L. G., Ulrich, R. S., Hebl, M. R. & Grossman-Alexander, M. (1998). View from the road. *Journal of Environmental Psychology*, 18:113–140.

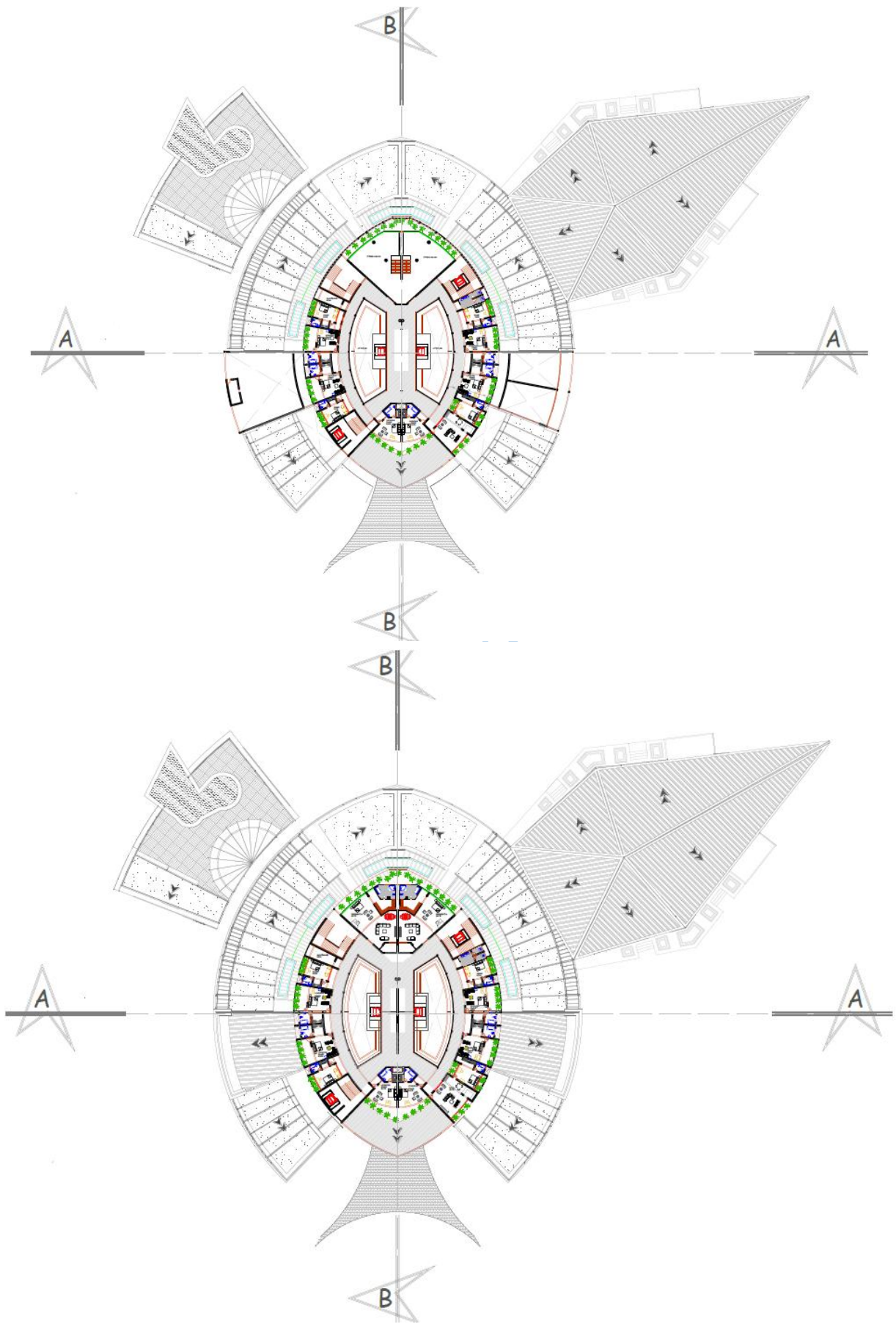
Appendix

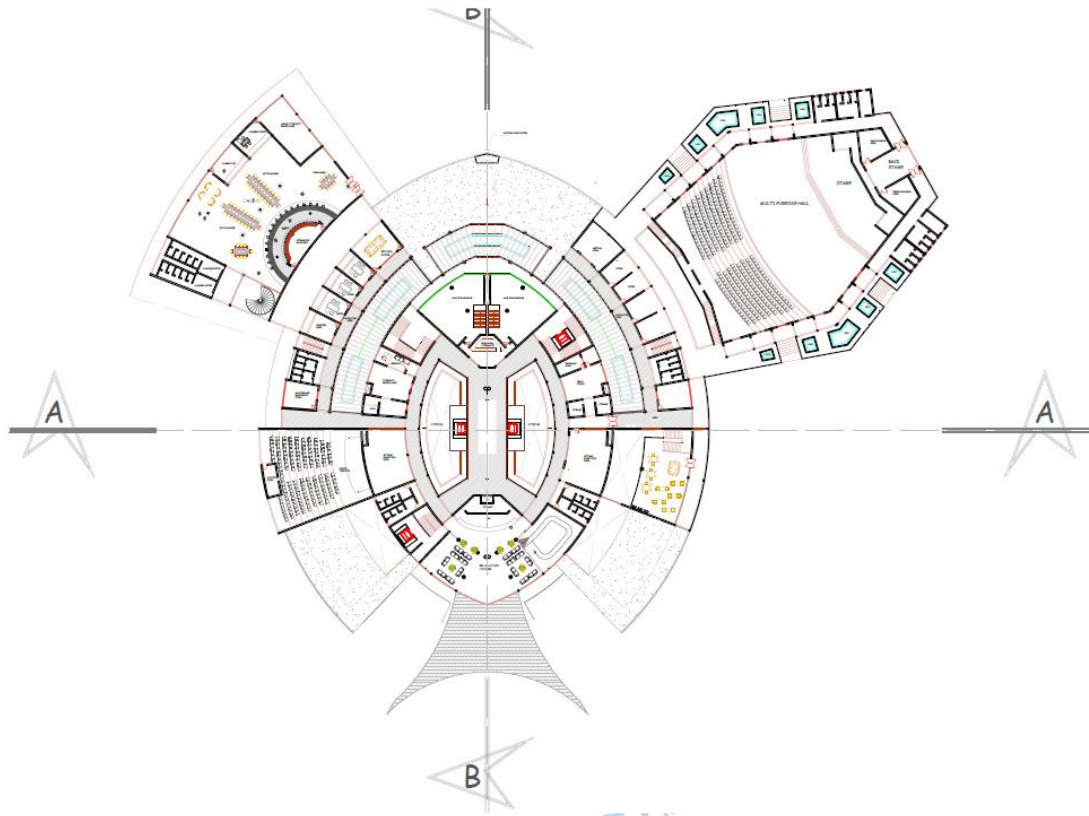


Site Plan

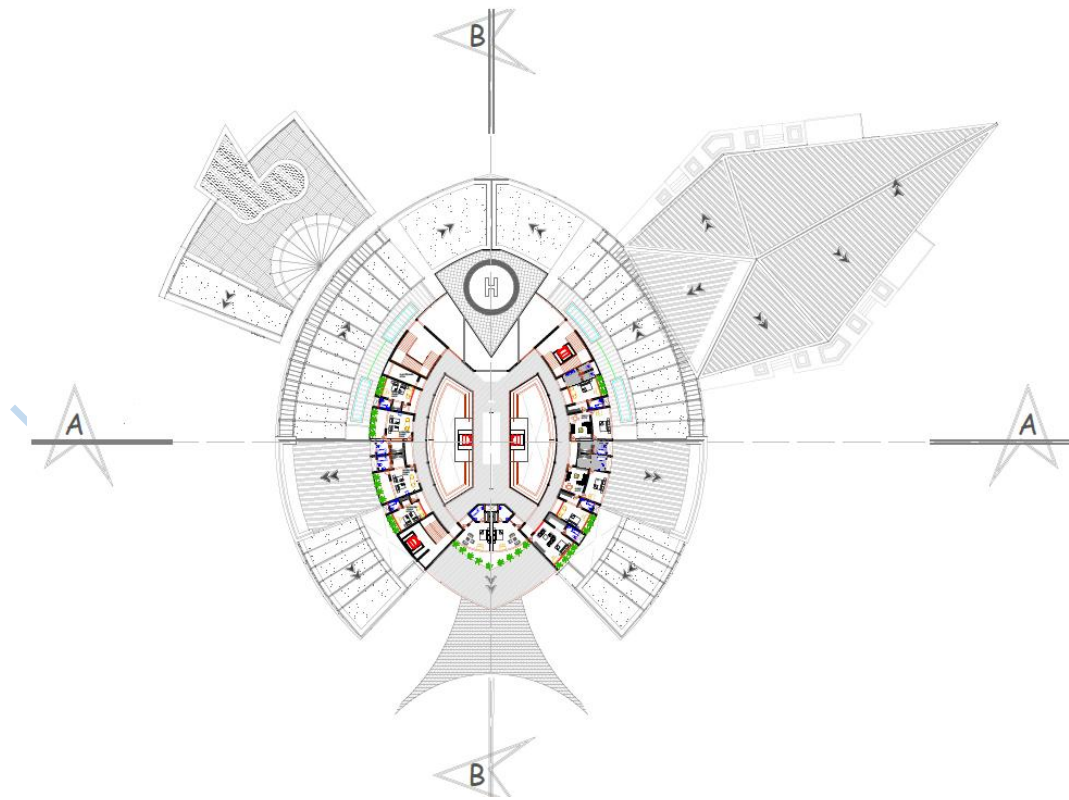
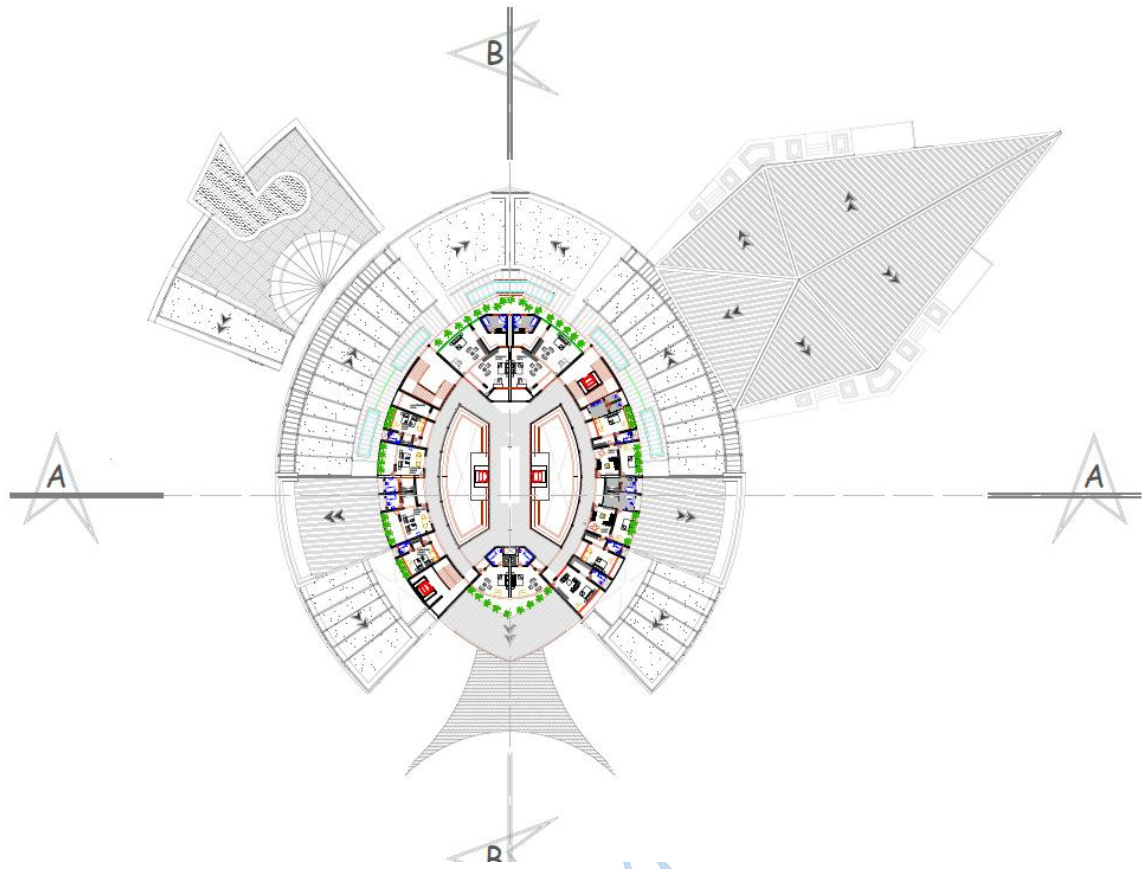
Lead City Un.

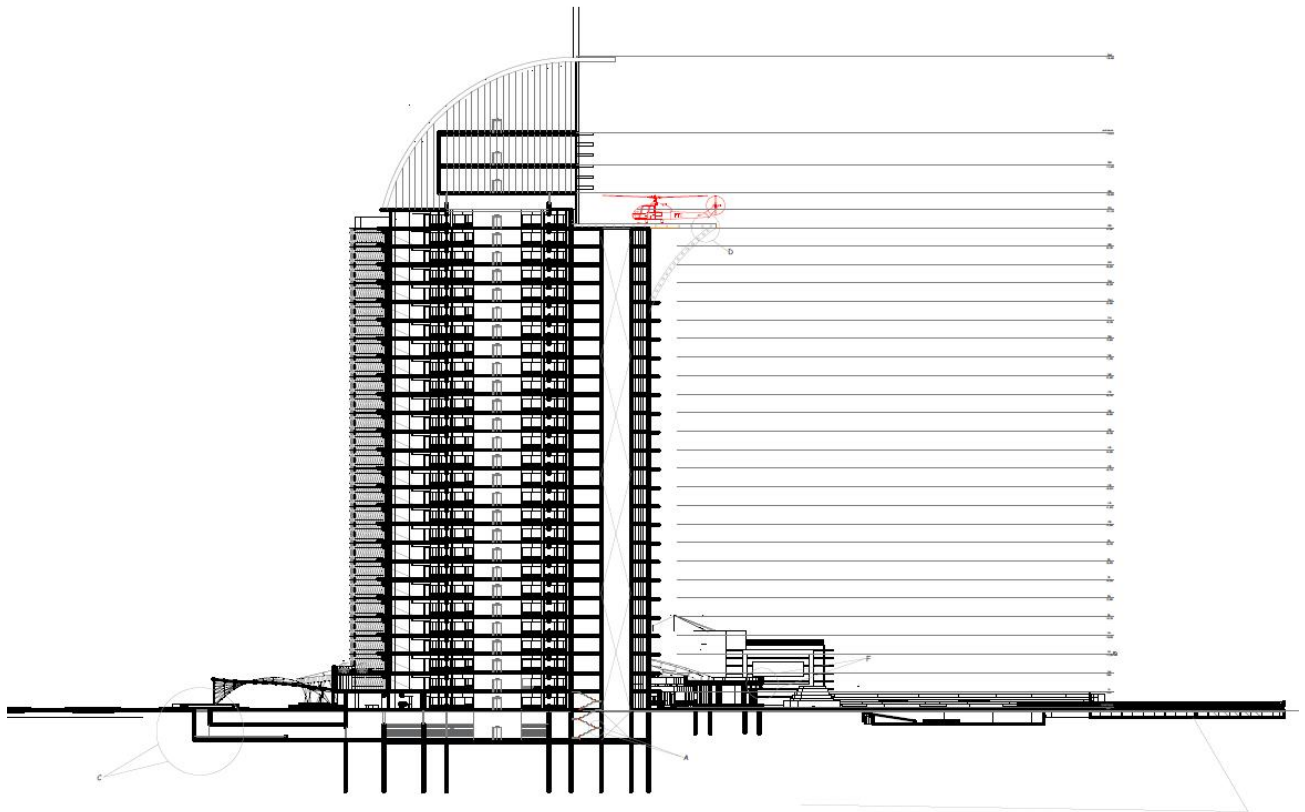
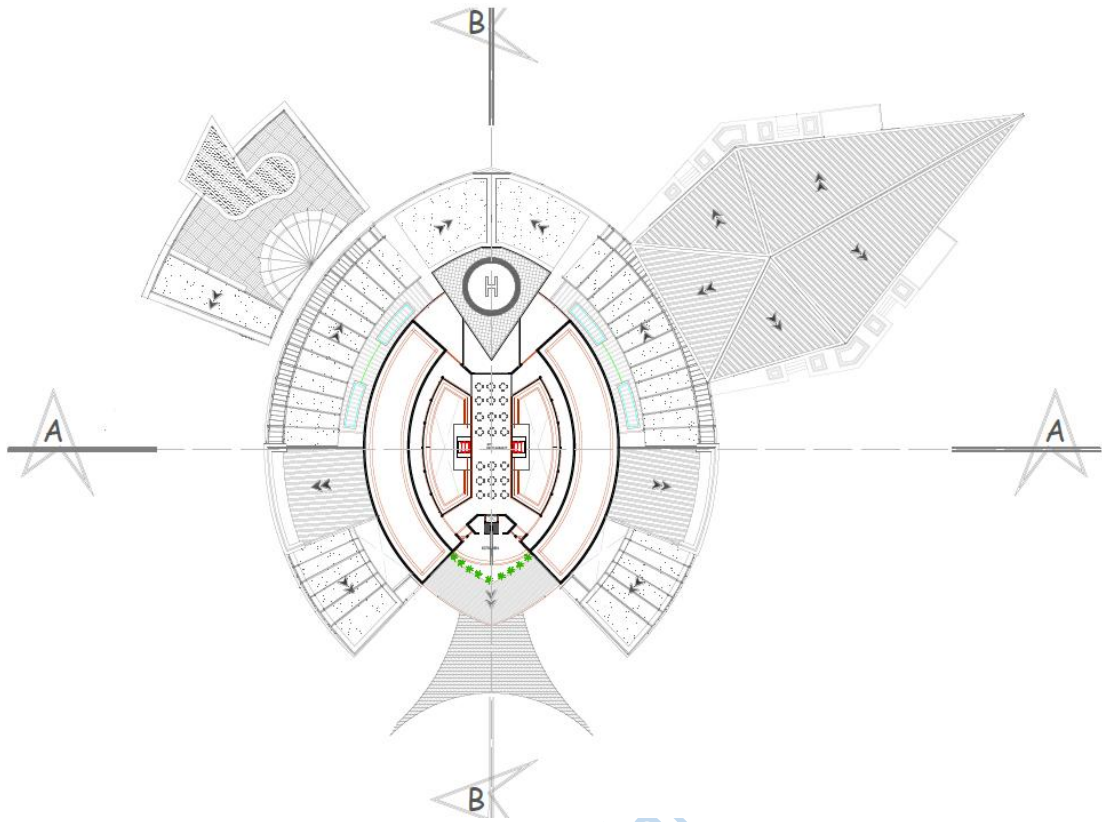


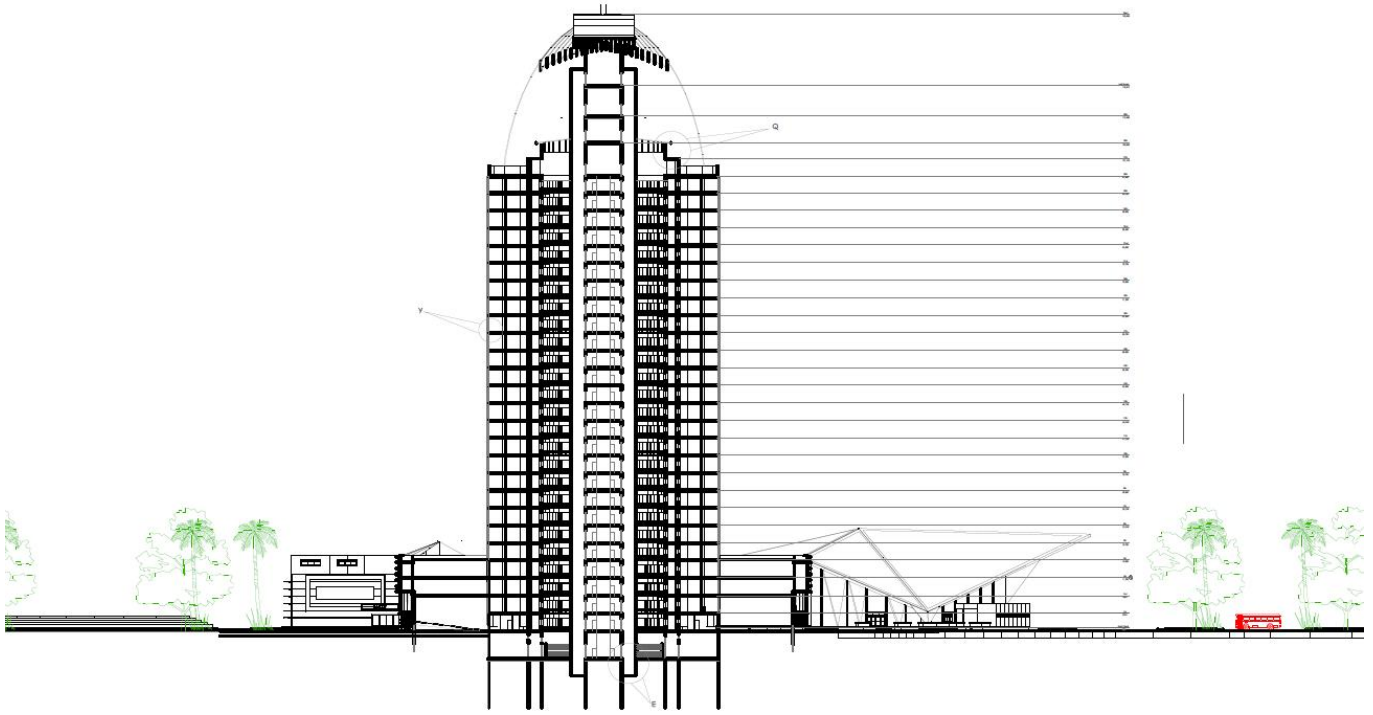




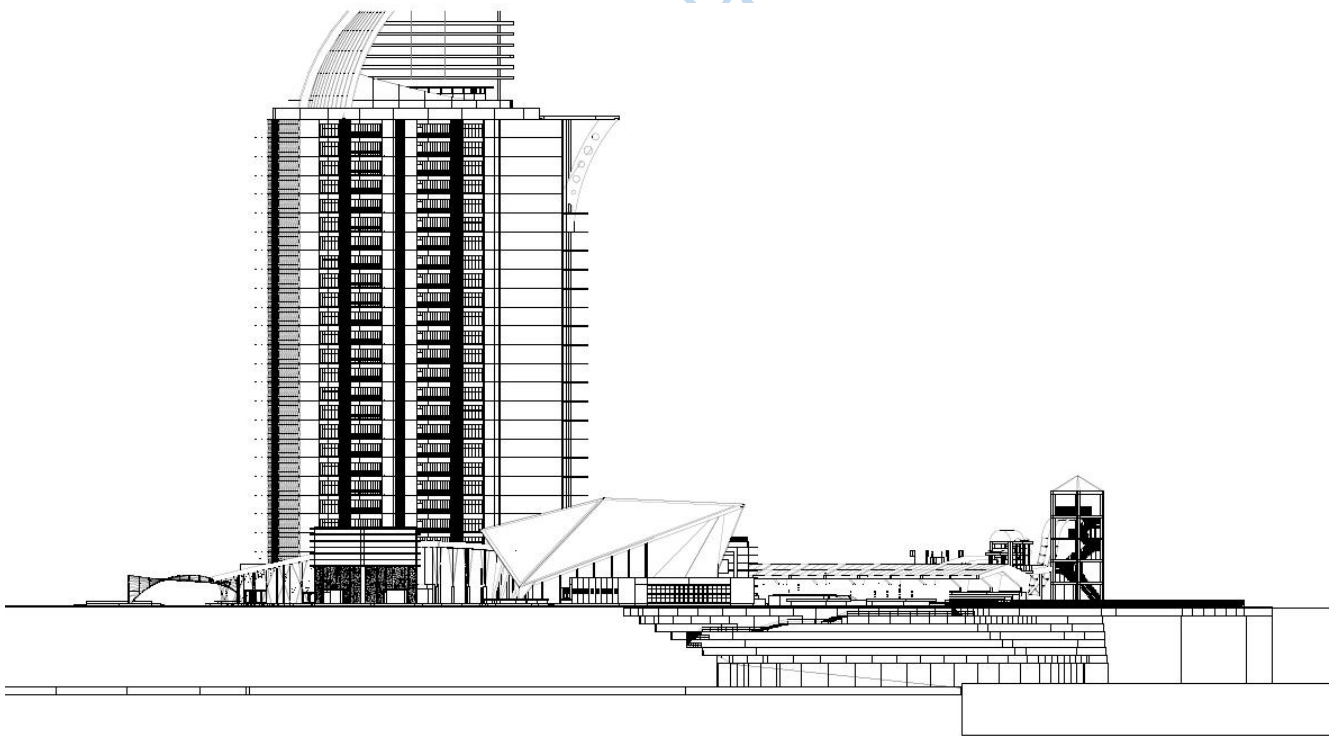
Lead City University Ibaad



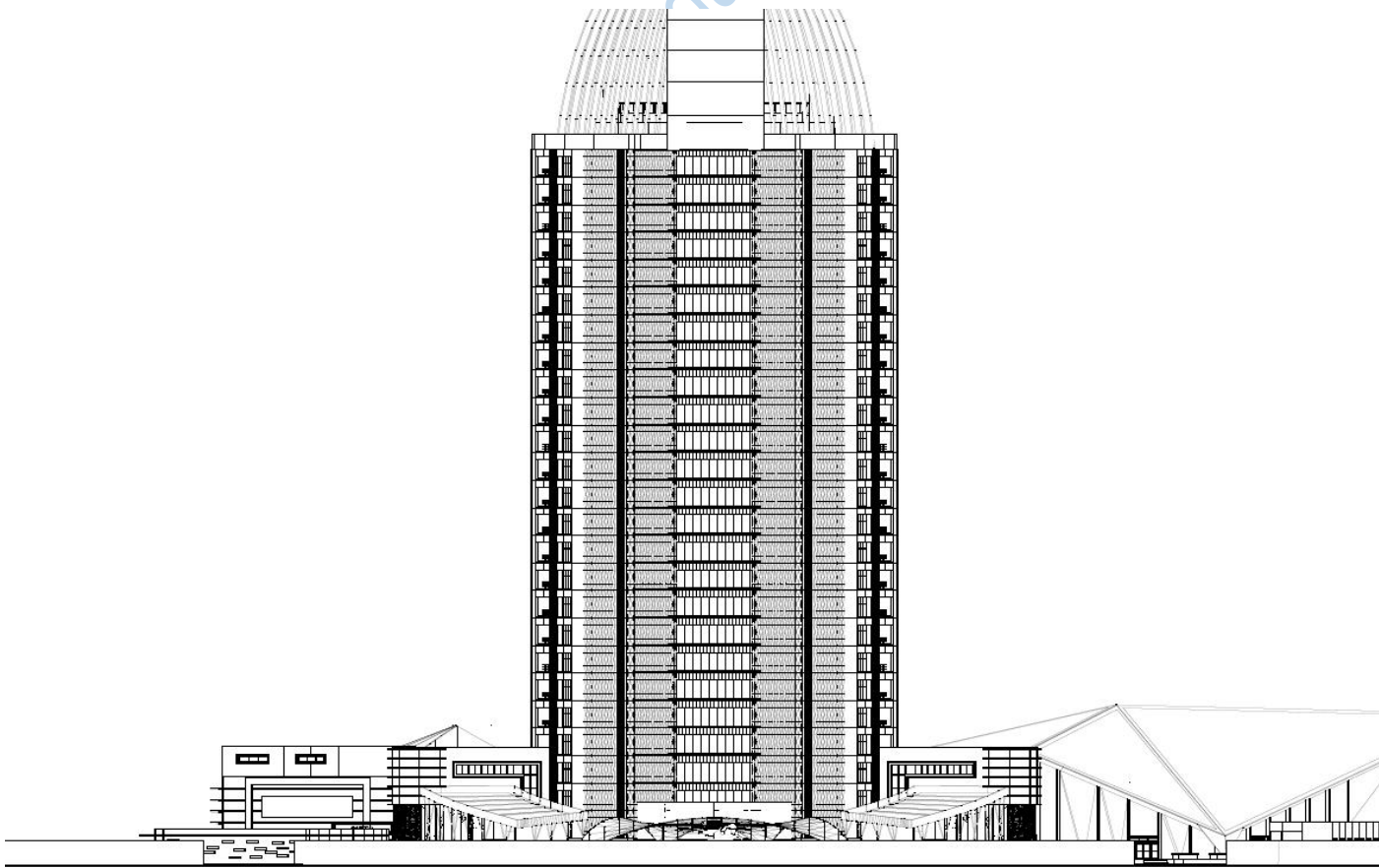
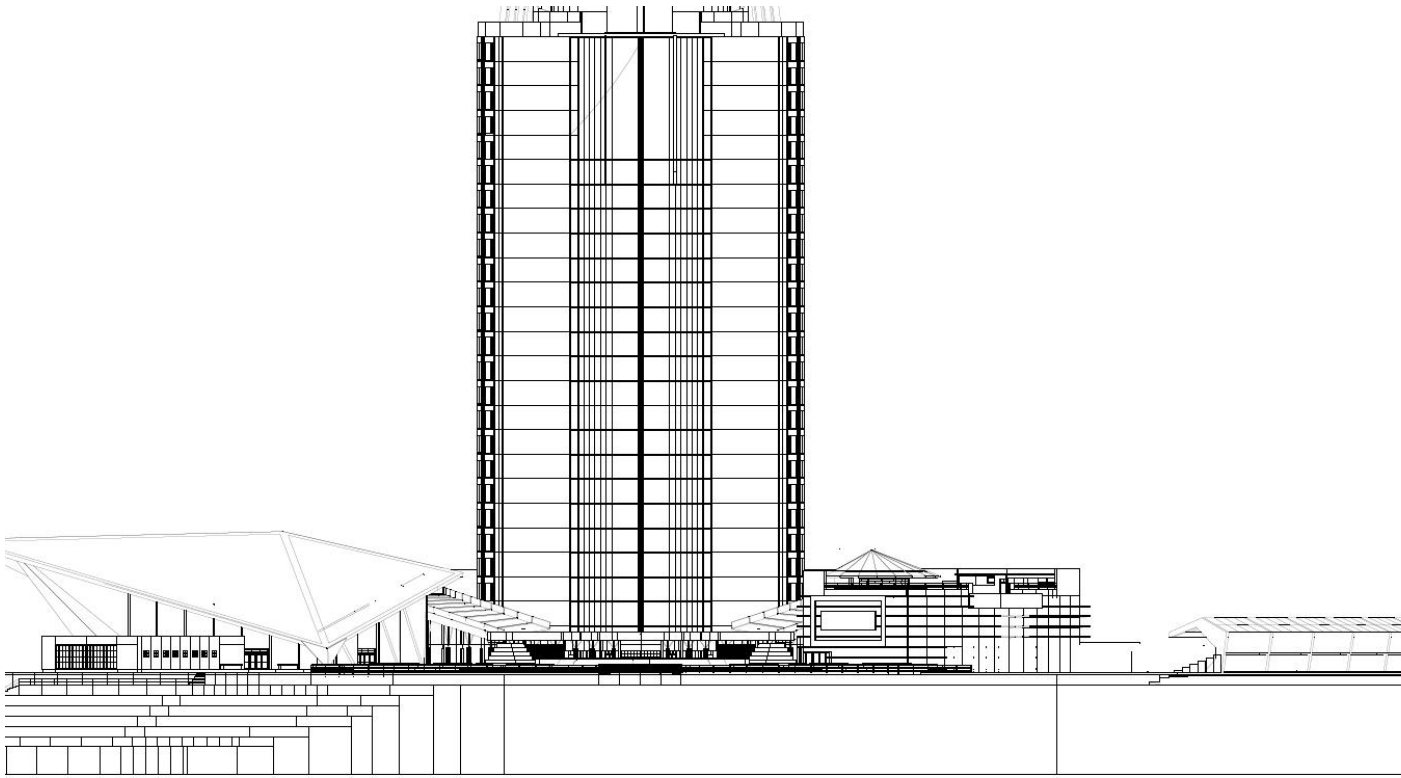




Section



Elevation



Biodata

A. Personal Data

Full Name: Korede Mayowa OSOKOYA

Address: New era area off Asa Dam road Ilorin Kwara State

Email Address: osokoyakorede@gmail.com

Phone Number: +2347033069866

Date of Birth: May 27, 1980

Place of Birth: Ibadan, Oyo State

Nationality: Nigerian

Marital Status: Married

Name and Address of Next of Kin: Mrs Osokoya Victoria; New era area off Asa Dam road Ilorin Kwara State

B. Educational background

Educational Institutions Attended with Dates

a. Primary Education

Methodist Primary School Oke-Ado Ibadan 1985 - 1991

b. Secondary Education

Baptist Secondary school Oke-Ado Ibadan 1991 – 1997

c. Higher Education

i. Federal Polytechnic Ede Osun State 2001 - 2004

ii. Kwara State Polytechnic 2007 – 2009

iii. Lead City University 2018 - 2020

C. Academic and Professional Qualifications with Dates

- i. Bachelor of Science (B.Sc) Architecture 2020
- ii. Higher National Diploma in Architecture 2009
- iii. National Diploma in Architecture 2004
- iv. West Africa School Certificate 1997
- v. Primary School Leaving Certificate 1991

D. Work Experience with Dates

Knicehabitat Designs And Development 2010 - Current

.....

Date

.....

Signature

Lead City University Ibadan DO NOT COPY

The University Compliance Certificate

This is to certify that the Thesis by Korede Mayowa OSOKOYA with matriculation number LCU/PG/002149 in the department of Architecture, Faculty of Environmental Design and Management, Lead City University, Ibadan, is in full compliance with the University format and style of Thesis.

.....

Date

.....

Signature

Lead City University Ibadan DO NOT COPY

Osokoya_Korede_Mayowa_LCU _MSc_Thesis. *by LCU Library*

Submission date: 30-Oct-2023 06:21PM (UTC+0100)

Submission ID: 2190191010

File name: Osokoya_Korede_Mayowa_LCU_MSc_Thesis.docx (7.06M)

Word count: 14487

Character count: 79748

Osokoya_Korede_Mayowa_LCU_MSc_Thesis.

ORIGINALITY REPORT

14%

SIMILARITY INDEX

14%

INTERNET SOURCES

0%

PUBLICATIONS

0%

STUDENT PAPERS

PRIMARY SOURCES



repository.futminna.edu.ng:8080
Internet Source

14%

Exclude quotes On

Exclude matches < 2%

Exclude bibliography On