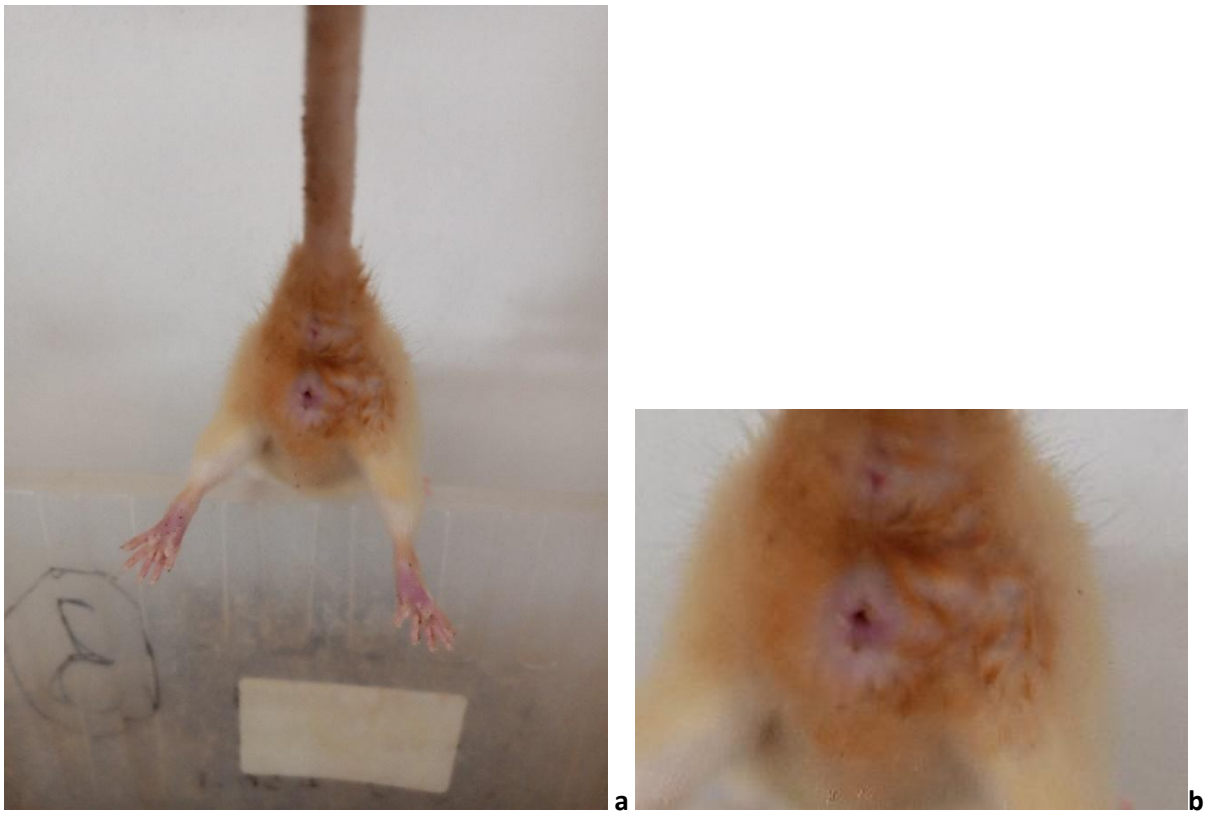
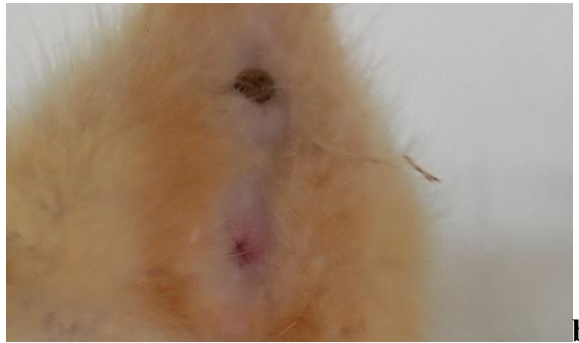
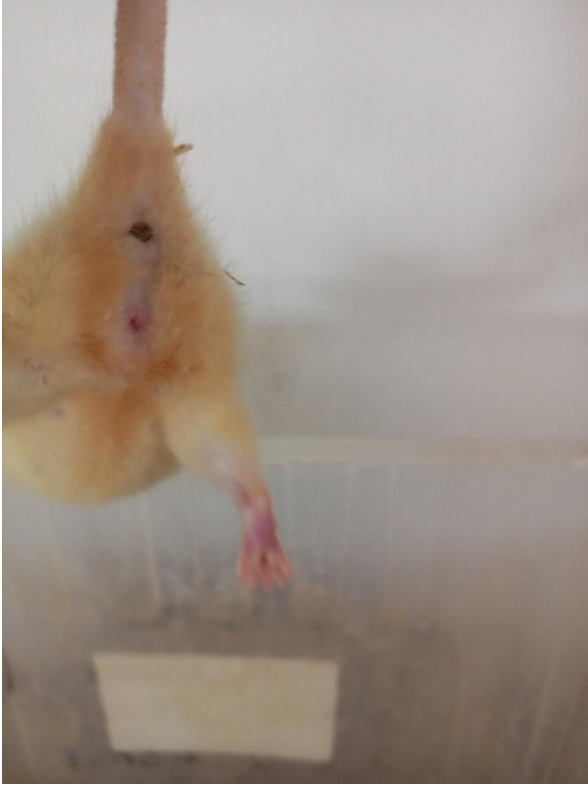


Appendix III

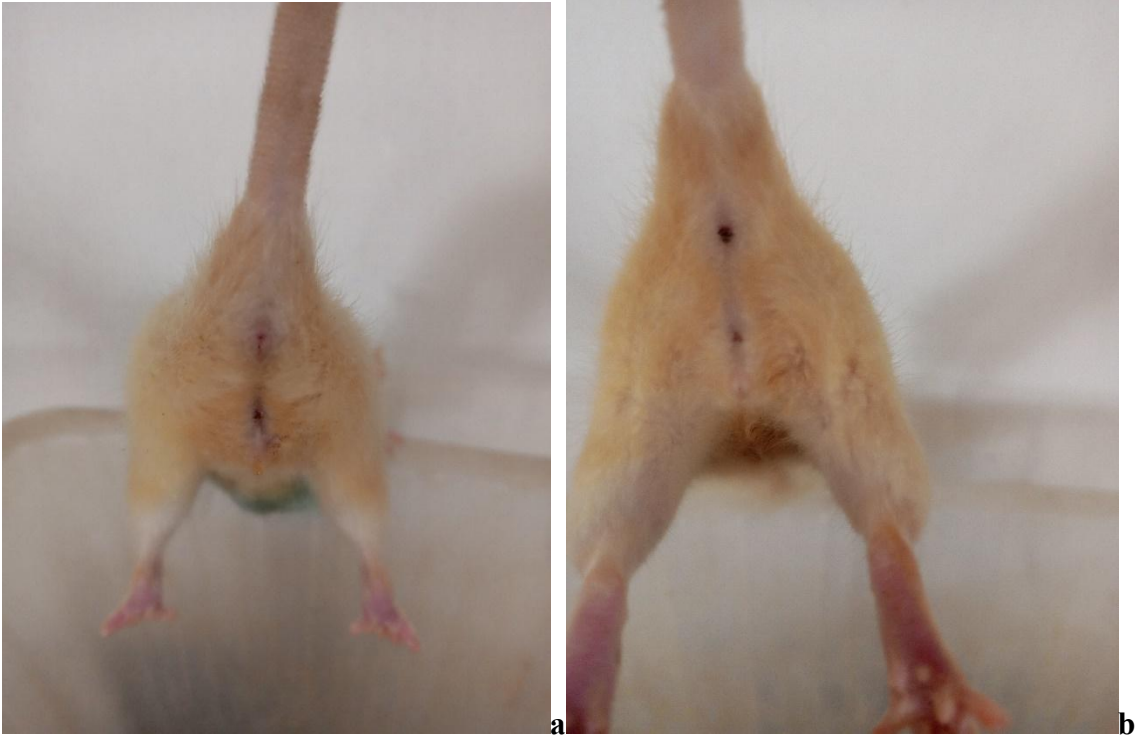
Visual Assessment of Vaginal Area of Rats to Evaluate the Estrous Cycle



The Proestrus Phase Characterized by a Full, Moist and Swollen Vaginal Opening with Pink Tissues and Striations in Both Ventral and Dorsal Lips of the Vulva



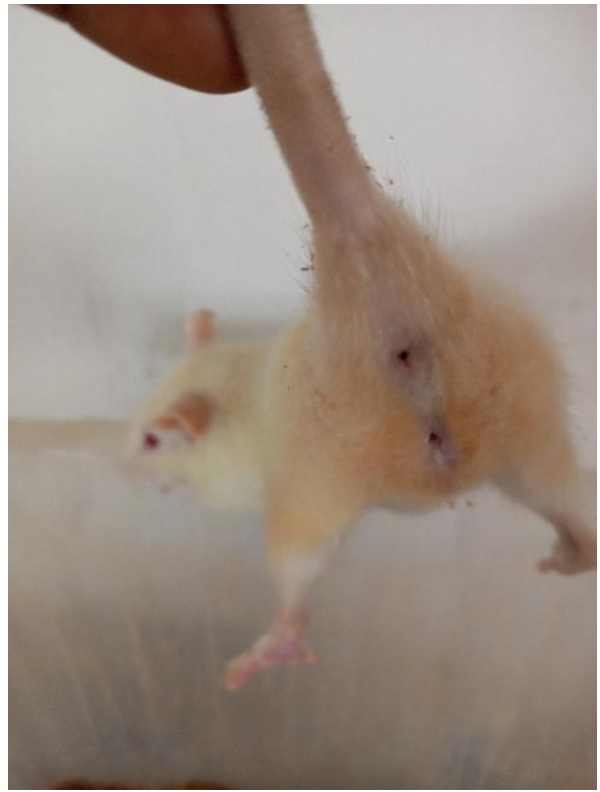
The Estrous Phase Characterized by Similar Features to the Proestrous Phase with More Noticeable Striations around the Lips of the Vulva but Less Swollen, Less Pink and also Less Moist.



The Metestrus Phase Where the Vagina Area is Usually Pale, Dry and Sometimes with Slough of Whitish Cellular Debris



a



b

Figure 4.14: Diestrus Phase Where the Vaginal Opening is Very Wet, Small and Closed with No Tissue Swelling

Appendix IV

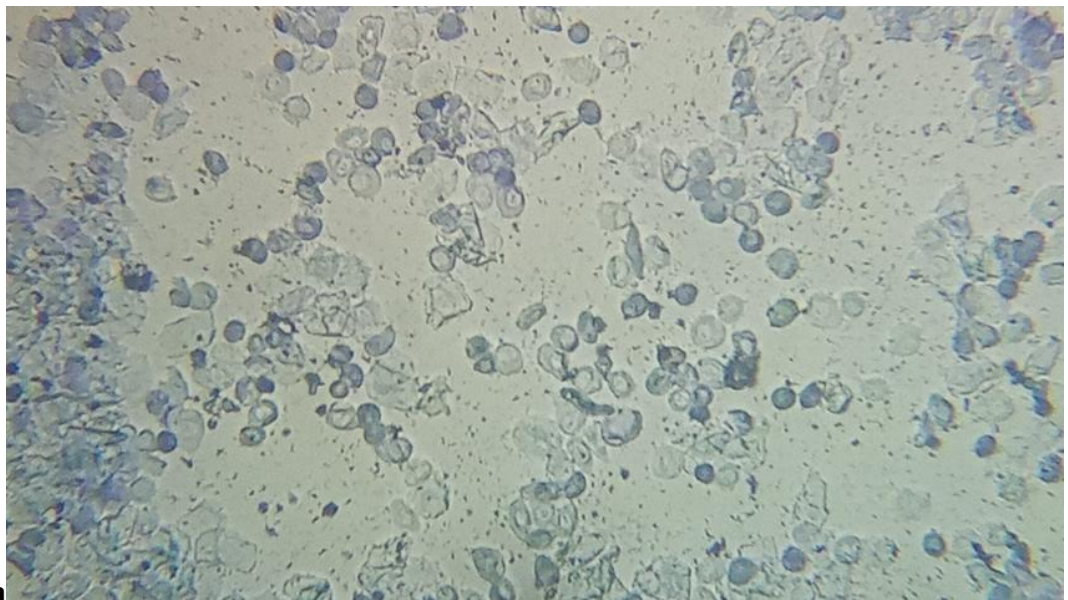
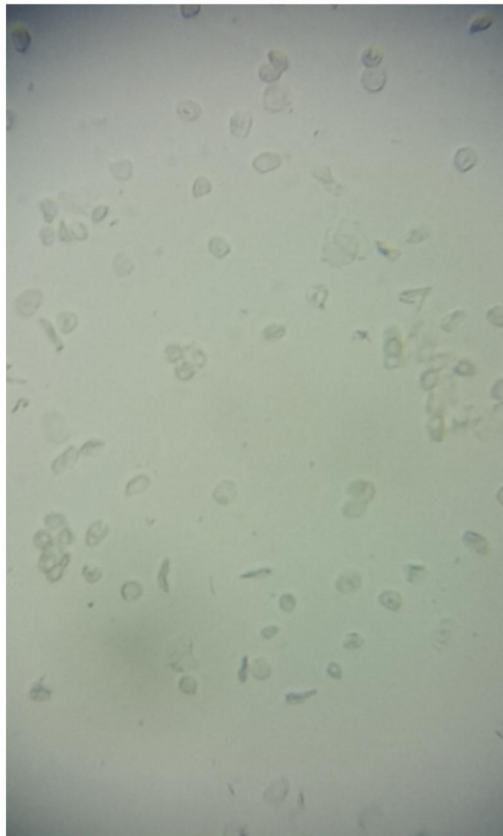


Plate 4.1a and b: The Proestrus Phase Characterized by a Large Distribution of Nucleated Epithelial cells

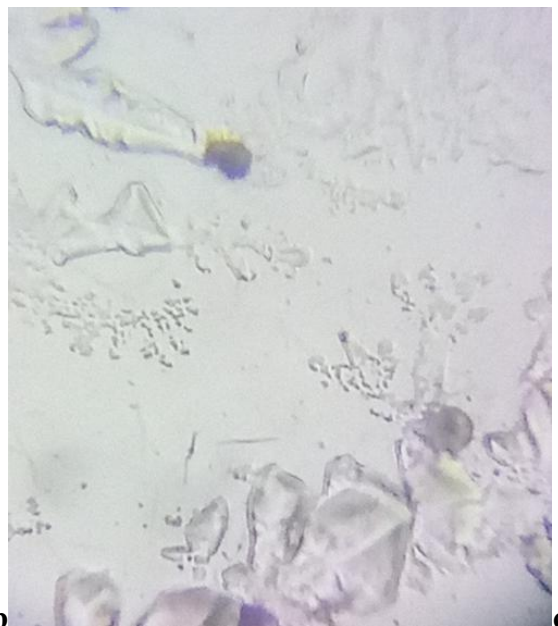
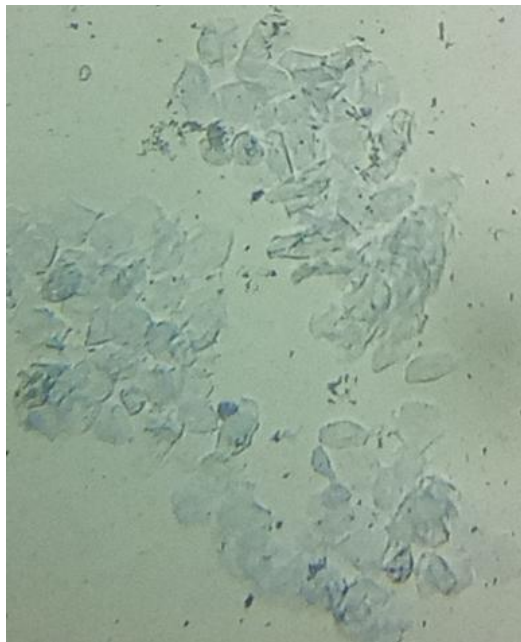
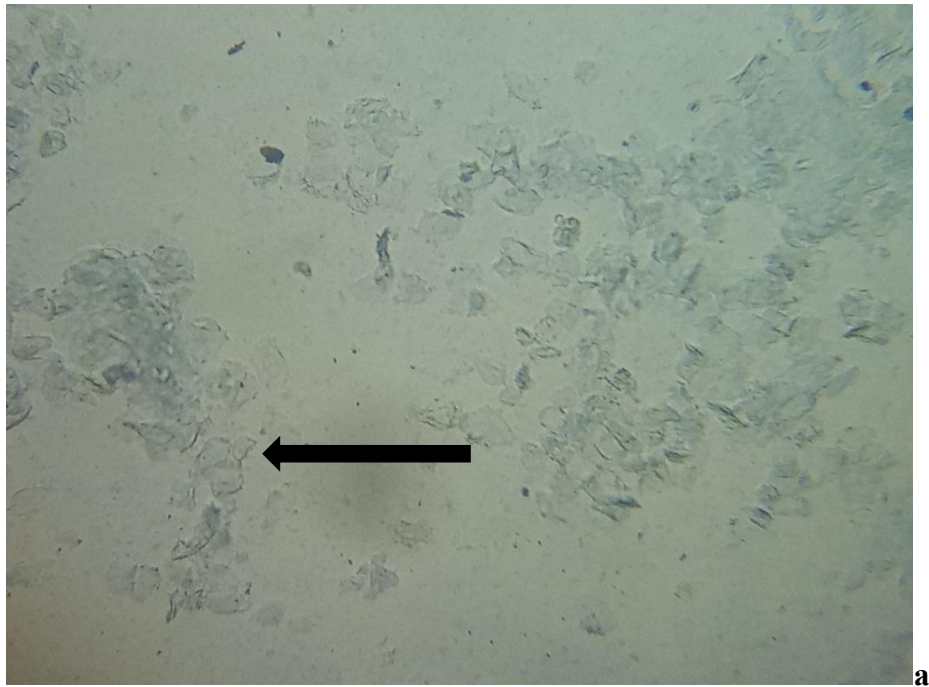
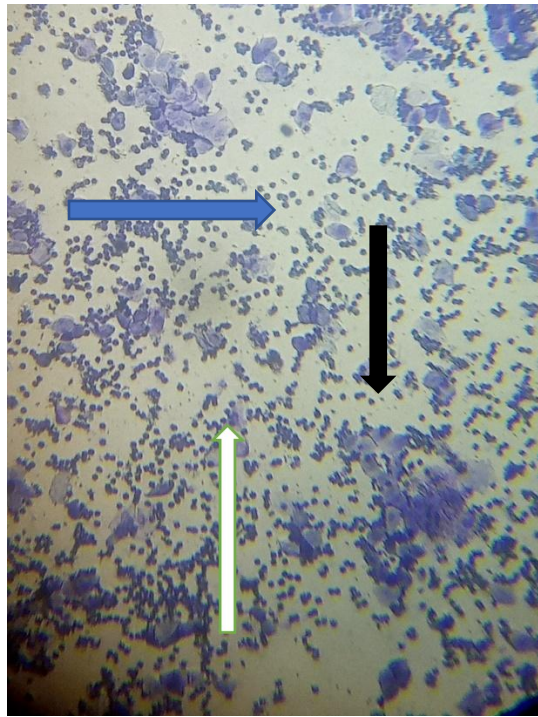
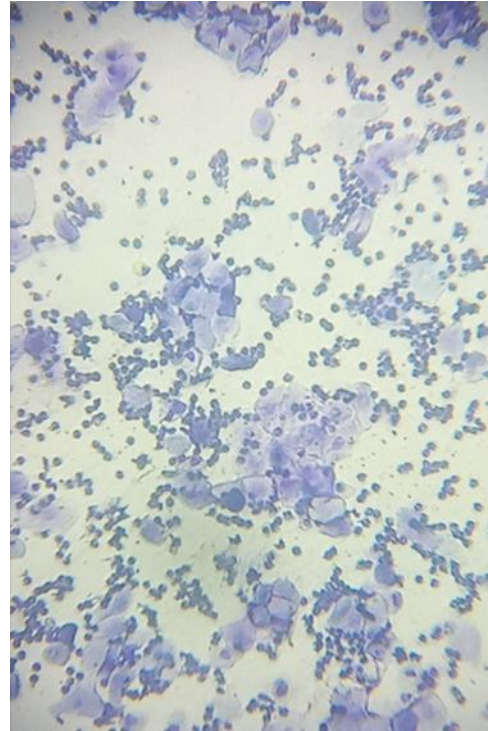


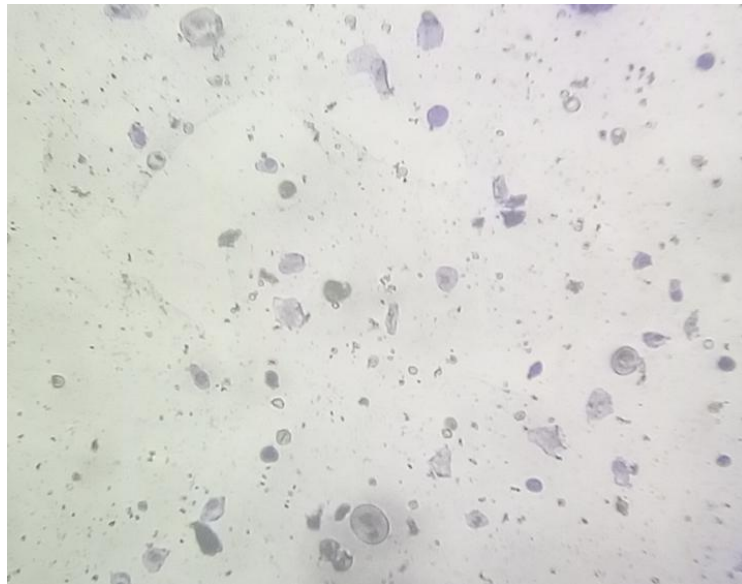
Plate 4.2 a, b, and c: Vaginal Smears at Estrous Phase with the Arrows Showing an Abundance of Anucleated Cornified Epithelial Cells With few Nucleated Epithelial Cells.



a

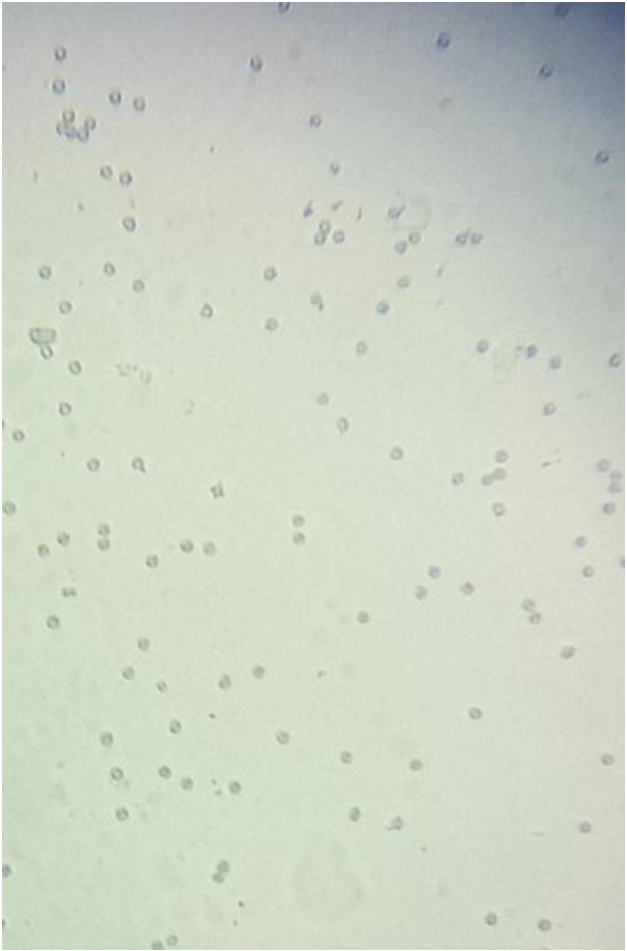


b

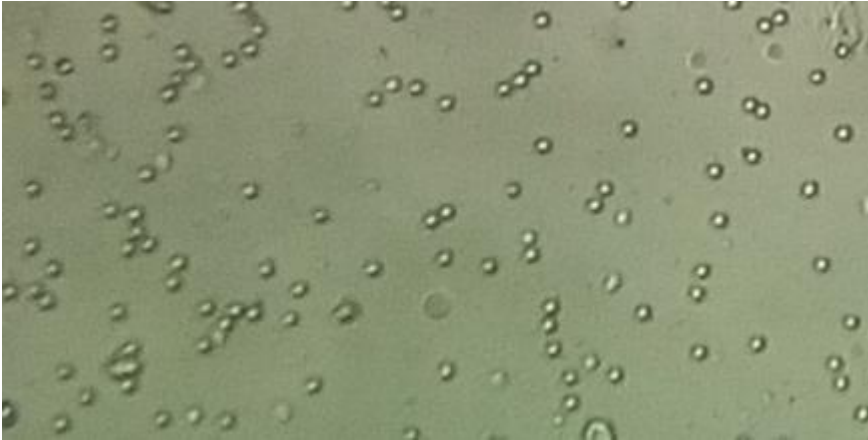


c

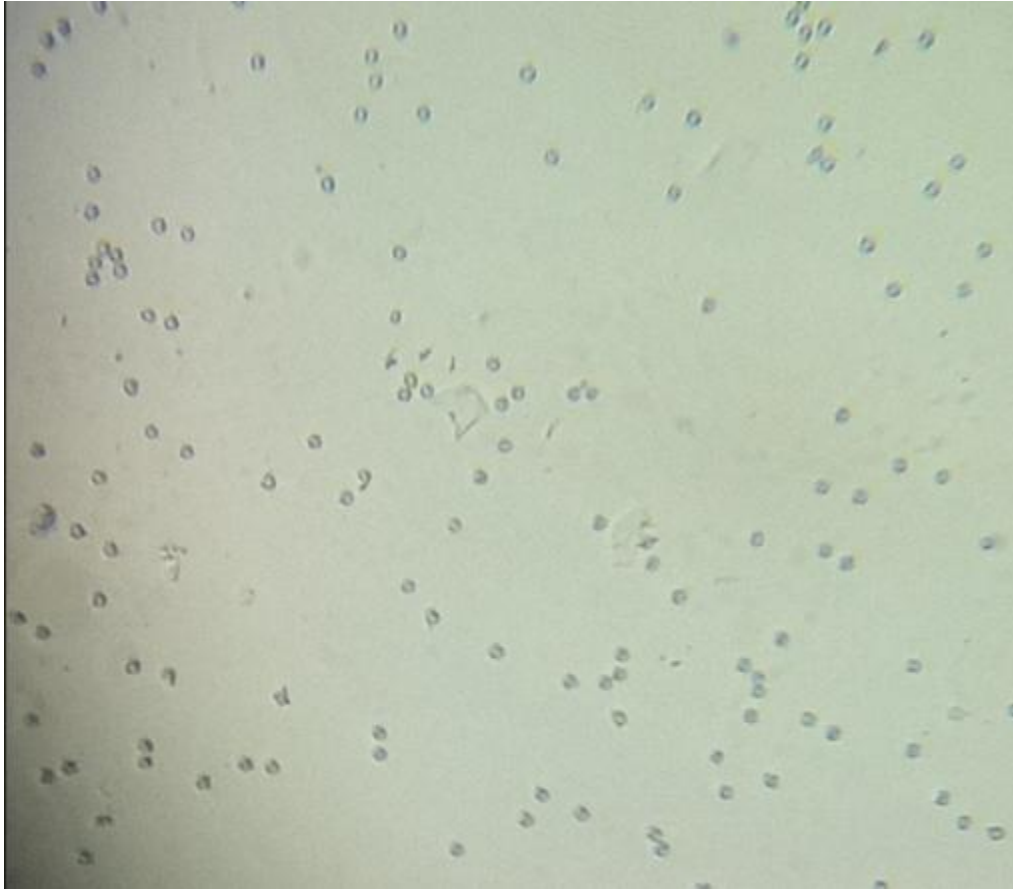
Plate 4.3 a, b and c: Vaginal Smears of Wistar Rats at the Metestrus Phase Characterized by the Presence of all Types of Cells, Leucocytes (Black Arrow), Large Non-Granular Anucleated Cornified Epithelial Cells (White Arrow), and Nucleated Epithelial Cells (Blue Arrow)



a



b



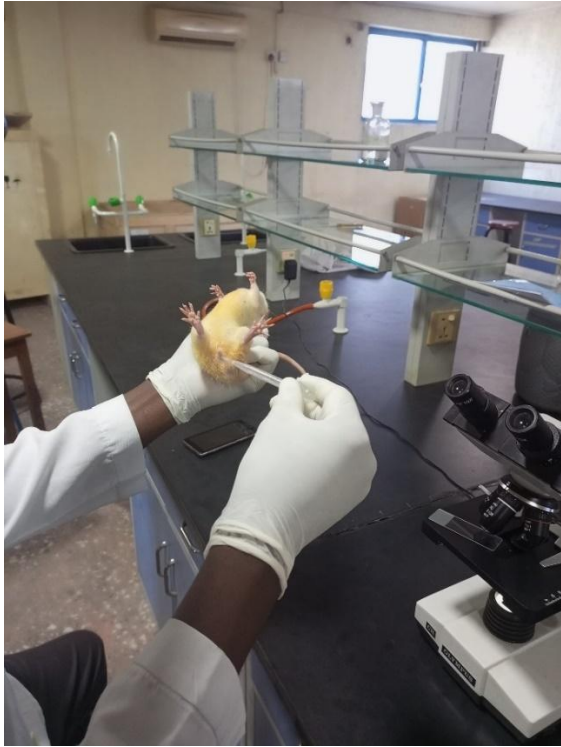
c

Plate 4.4a, b and c: The Diestrus Phase Predominantly Characterized by Leucocyte Cells

Appendix V



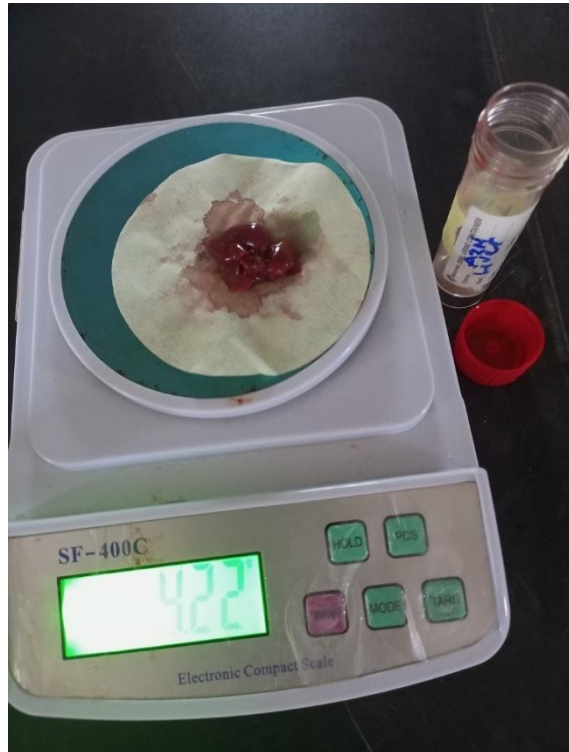








Collection of Blood and Harvesting of Organs





Weighing of Organs



Homogenization, Centrifugation and Biochemical Analyses





ELISA Analysis

