

**Proposed Entertainment Centre for Ogombo, Lagos State.
(Promoting Community Inclusiveness in Public Recreational Facilities through Design-based
Strategies)**

**Olusogo Abiodun, OGUNDARE
LCU/PG004069**

**Being a MSc Thesis Submitted to the Department of Architecture, Faculty of Environmental
Design and Management, Lead City University, Ibadan, Oyo State, Nigeria**

In Partial Fulfillment of the Requirements for the Award of Master Degree (MSc) Architecture.

2024

Certification

This is to certify that, OLUSOGO OGUNDARE with matriculation number LCU/PG/004069 carried out this research work titled ‘Promoting Community Inclusiveness in Public Recreational Facilities through Design-based Strategies’ in the department of Architecture, Faculty of Environmental Design and Management, Lead City University, Ibadan, Oyo State, For the award of Master Degree (MSc) in Architecture. The thesis is an outcome of an independent and original work. I have duly acknowledged all the sources from which the ideas and extracts have been taken. The project is free from any plagiarism and has not been previously submitted to any other institution.

.....
(Arc) Adedeji Afolabi
(Supervisor)

.....
Date

.....
Dr. (Arc) Obaleye Oludare
(Head of Department)

.....
Date

Dedication

This work is specially dedicated God Almighty. I also dedicate this to the pursuit of knowledge and the relentless spirit of inquiry that fuels our academic journey. It stands as a testament to the commitment, perseverance, and unwavering support of those who have played a significant role in shaping my educational path.

Lead City University Ibadan DO NOT COPY

Acknowledgement

To Lead City and the post graduate school for creating such enabling environment where success is built and driven.

To my parents, Prophet John Oluwaferanmi (JP) and Prophetess Rebecca John

My beloved family, particularly my wife (Fadekemi mercy and my children), my beloved brother Surv Olukayode Moses Ogundare (fmnia),

My colleague MSc 2022 to 2024 academic session, particularly, Arc Adeleke Tobi, Arc Kayode Shola, Arc Oladele Victor, Arc Kalejaye, Arc Ayanbode Fatih, Arc Taiwo Azeez, Arc Azeem, Arc Maliq, Arc Afolabi.

To my H.O.D Dr Obaleye, my project supervisor Arc Adedeji Afolabi, Arc Olamidipupo, etc

Most Importantly To God Almighty the author and finisher that can never late in action, that does things when it pleases only you deserve my praise for success of my MSc program.

Abstract.

A vital component of human existence is recreation, people are drawn to it since it offers more notable pleasures in life. It establishes a robust and salubrious milieu that fosters an enhanced lifestyle of transparency. Recreation centers have an impact on peoples mental and physical health. Recreation and Leisure are essential to human existence, helping to improve people’s mental and social characteristics therefore positively impacting the wellbeing of people. Recreation strengthens a person’s social inclinations. Recreation facilities must be designed to include people across all ages. Inclusive design strategies help to meet the needs of various users of public spaces, addressing the needs of the elderly and that of the disabled. Promoting community inclusiveness in recreational facilities involves thoughtful and intentional design-based strategies that would cater for diversity in population by mitigating against various barriers before addressing key principles of universal design, accessibility, cultural inclusivity, way finders, sustainability, safety and security. Through a combination of Literature review, case studies, this thesis investigate various design strategies that have successfully addressed these barriers and incorporated solutions creating environments that not only meet physically acceptable standards but promotes social interaction with a sense of belonging. Therefore, these findings provide practical recommendations for urban planners, architects to implement design-based solutions that enhance community inclusiveness in a healthy and sustainable vibrant public space.

Keywords: User centered design, universal design, community engagement, diversity, accessibility.

Wordcount: 222 words.

Table of Contents

Contents	Page
Cover Page	i
Certification	ii
Dedication	iii
Acknowledgement	iv
Abstract	v
Table of Contents	vi
Chapter One: Introduction	1
1.1 Background to the Study	1
1.2 Statement of the Research Problem	2
1.3 Aim and Objectives of the Study	3
1.4 Research Questions	3
1.5 Significance of the Study	4
1.6 Scope of the Study	4
1.7 Limitation of the Study	5
1.8 Operational Definition of Terms	5
Chapter Two: Literature Review	7
2.1 Conceptual Review	7
2.1.1 Inclusion	7
2.1.2 Social Inclusion	8
2.1.3 Key aspects of the concept of inclusion in social context	8

2.1.4	Dimensions of Social inclusion and Exclusion	11
2.2	Community inclusive Design	13
2.2.1	Evolution of community Design	16
2.2.2	Social identity and social categories	17
2.3	Design consideration for inclusive entertainment center	21
2.3.1	Family friendly design	33
2.4	Components of Entertainment Center	34
2.5	Process of Inclusive Design	38
2.6	Inclusive Design for Human Values	38
2.7	Human Wellbeing Safety and Security	40
 Chapter Three: Methodology		 48
3.1	Research Design	49
3.2	Types and Sources of Data	50
3.3	Cases Studies	51
3.3.1	Case Study One: Ventura Mall, Ibadan, Nigeria	51
3.3.2	Case Study Two: Silverbird Galleria, Lagos, Nigeria	55
3.3.3	Case Study Three: Twinwaters, Lagos, Nigeria	58
3.3.4	Case Study Four: Immersia Virtual Reality, Lagos, Nigeria	64
3.4	Deductions from Case studies	67
 Chapter Four Site Analysis and Design Synthesis		 68
4.1	Brief Analysis	68
4.1.1	Design Brief	69

4.1.2	Brief Development	70
4.2	Study Area	70
4.2.1	Site Selection	73
4.2.2	Site Selection Criteria	73
4.2.3	Site Analysis	75
4.3	Project Analysis/ Design Synthesis	76
4.3.1	Conceptual Development	77
4.3.2	Functional Relationship	78
4.3.2	Construction Method and Materials	78
4.4	Building Services	79
Chapter Five	Recommendations and conclusion	81
5.1	Project Appraisal	81
5.2	Conclusion	81
5.3	Recommendation	82
	References	
	Appendix	
	Student Biodata	
	Compliance Report.	

Figure	Title	Page
2.1	Dimensions Of social Inclusion	13
3.2	Ventura Site	46
3.2.1	Silverbird Cinema Site	50
3.3.1	Twinwaters site	54
3.4.1	Immersia Virtual Reality site	64
3.4.2	Immersia Virtual Reality 3D game arcade	65
3.4.3	Immersia Virtual Reality Tv gane arcade	66

Lead City University Ibadan DO NOT COPY

List of Plates.

Figure	Title	Page
3.2.1	Ventura Elevation	52
3.2.2	Ventura Cool Spot	48
3.2.3	Ventura Cinema	48
3.2.4	Ventura Circulation Area	49
3.3.2	Silverbird approach	51
3.3.3	Silverbird Cinema	52
3.3.4	Silverbird Circulation	53
3.3.2	Twinwaters Approach	60
3.3.3	Twinwaters Aerial View	61
3.3.4	Twinwaters Game Arcade	62
3.3.5	Twinwaters water View	63
4.1	Brief Analysis	64
4.2	Map of Africa	71
4.3	Map of Lagos	72
4.4	Site	72
4.5	Site Analysis	75
4.6	Exterior Perspective	77
4.7	Functional Relationship	78

Chapter One

Introduction

1.1 Background to the Study

Community inclusiveness refers to the practice of creating an environment where all individuals feel welcome, respected, and valued regardless of their background, identity, or characteristics (Hsieh et al., 2022). In an inclusive community, people from diverse backgrounds, such as different races, religions, ethnicities, genders, sexual orientations, abilities, and socioeconomic statuses, are able to participate fully and contribute to the community in meaningful ways (Utrilla-Cobos, Alicia et al., 2014; Killespecker & Nickpour, 2022). The principal of inclusiveness demonstrates that all people in the community ought to experience the effects and attributes of the power of shared togetherness as a creative and unifying tool (Schneider, 2022). In recent years, the concept of community inclusiveness has gained significant attention as societies strive to create more equitable and welcoming environments for all individuals.

Public recreational facilities play a crucial role in fostering community cohesion and well-being by providing spaces for social interaction, physical activity, and cultural exchange (Busciantella-Ricci, 2023; Zhu et al., 2022). According to studies, community inclusiveness is highly relevant in recreational facilities as these spaces play a crucial role in the overall well-being of community members (Kordić, 2020). When recreational facilities are inclusive, they ensure that all individuals, regardless of their backgrounds or abilities, have the opportunity to participate in recreational activities, socialize, and enjoy the benefits of these spaces (Sawyer, 2020). However, many such facilities face challenges in effectively promoting inclusiveness and ensuring that they are accessible and welcoming to all members of the community, including marginalized groups.

Studies have argued that one of the main challenges facing recreational space designs in terms of inclusiveness are related to architectural barriers, lack of appropriate infrastructure, and insufficient accommodations to individuals with disabilities (Kille-speckter & Nickpour, 2022). Also, meeting diverse cultural needs and preferences of community members can be a challenge, as different groups may have varying recreational interests and requirements (Rao, 2020). Furthermore, the lack of awareness and training among architects and designers on inclusive design principles and practices can hinder the development of truly inclusive recreational spaces (OECD, 2018; Utrilla-Cobos, Alicia et al., 2014; Heitor, 2005). Therefore, addressing these challenges requires a commitment to inclusive design principles, and a focus on creating welcoming and accessible recreational spaces for all individuals.

Well thought out inclusive design principles, when integrated to recreational facilities can accommodate individuals of all ages, abilities, and backgrounds, ensuring that everyone can participate in recreational activities. It thus implies that recreational facilities are critical to achieving inclusive designs because they not only provide spaces for social interaction, physical activity, and cultural exchange but also serve as catalysts for community engagement, empowerment, and improved quality of life for all individuals (Zhu et al., 2020). By prioritizing inclusivity in the design and management of recreational facilities, communities can create welcoming, accessible, and vibrant spaces that cater for the diverse needs and interests of their residents. In view of the above, this design thesis is compiled to explore design strategies and space standards for achieving community inclusiveness in recreational facilities.

1.2 Statement of the Research Problem

Promoting community inclusiveness in public recreational facilities is a crucial aspect of fostering social cohesion, diversity, and well-being on a global scale (Hsieh et al., 2022; Schneider, 2022). Despite the recognized importance of these communal spaces in enhancing community engagement

and interaction, there remains a persistent challenge in ensuring equitable access, participation, and inclusivity for individuals from diverse backgrounds across different regions and cultures (Killespecker & Nickpour, 2022). This is the current reality in many recreational facilities in Nigeria (Afolabi et al., 2022). While the numerous benefits of designing for inclusiveness have been well articulated in many studies; a case study of many of these facilities shows that some groups in the communities are being marginalized.

Today, there exists a significant challenge in fostering community inclusiveness within recreational spaces in Lagos, Nigeria. The lack of adequate inclusivity initiatives and strategies within public recreational facilities in the city often leads to social exclusion, marginalization, and limited participation among diverse community members, thus hindering the full realization of the potential benefits associated with these communal spaces. This study is thus carried out to partly address these challenges by promoting community inclusiveness in the proposed entertainment center, Ogondo, Lagos, Nigeria.

1.3 Aim and Objectives of the Study

The cardinal aim of the study is to determine design based strategies for community inclusiveness in Public recreational Facility.

The objectives of this study are:

1. To review the concept of inclusiveness so as to understand its requirements in an entertainment center and similar recreational facilities.
2. To identify the basic design considerations and standards for inclusivity in entertainment facilities.

3. To draft and develop comprehensive design briefs for the proposed entertainment center and other ancillary facilities;
4. To design and adopt comprehensive design brief for the proposed entertainment center and other ancillary facilities.

1.4 Research Questions

1. What does inclusiveness mean within the context of community recreational spaces?
2. What are the basic functional requirements and performance criteria applicable to the design of entertainment center?
3. Is the development of comprehensive building design briefs important in the design and development of an entertainment center and its ancillary facilities?
4. Of what significance is the right selection and proper analysis of the site to viability or success the proposed project?

1.5 Significance of the Study

Promoting community inclusiveness in public recreational facilities such as an entertainment center is essential for creating vibrant, healthy, and cohesive communities where all individuals feel welcomed, valued, and empowered to participate in recreational activities that enhance their quality of life. It thus implies that by considering the needs and preferences of diverse community members in the design process, recreational facilities can foster a sense of belonging and promote social interaction among different groups, including people of all ages, individuals with disabilities, and people with diverse needs.

This study is also significant as it attempts to explore strategies for creating spaces that are attractive, safe, and functional. This is based on the idea that design strategies can motivate people to engage in healthy behaviors, such physical activity, social engagement, and community connections and improve

their overall quality of life, which can have positive effects on the health and well-being of individuals. Also, design strategies that incorporate elements of cultural significance, historical context, or artistic expression can help celebrate the diversity of the community and promote cultural awareness and understanding among residents. By creating spaces that resonate with different cultural groups, recreational facilities can serve as platforms for cultural exchange, education, and dialogue. Therefore, by prioritizing inclusivity in design, these facilities can become vibrant hubs of community life, where all individuals feel welcome, valued, and empowered to participate in recreational activities and social interactions.

1.6 Scope of the Study

This design thesis is carried out to highlight how community inclusiveness can be promoted in public entertainment and similar recreational facilities to address systemic inequalities and ensures that all individuals have equal opportunities to enjoy and benefit from recreational opportunities. This is with a view to provide a platform for community engagement, participation, and collaboration, empowering residents to have a voice in shaping the development and programming of public spaces. Rather, this thesis proposes using effective zoning of functional and circulation spaces as a means of enhancing inclusiveness in the proposed facility. The study commences by discussing the concept of inclusiveness and recreational facility, and then deals with the architectural requirements of an entertainment center with specific focus on its inclusive requirements so as to serve as a basis for the proposed entertainment Centre, Igando, Lagos, Nigeria. The target group for this thesis comprises of individuals from different backgrounds.

1.7 Limitation of the study

A limitation of the study is that it adopts a case study approach due to the nature of the research objectives. As such, the findings were limited to findings from existing literatures and deductions from existing cases studied.

1.8 Operational Definition of Terms

1. **Accessibility:** This refers to the design of spaces and environments that can be accessed and used by people with disabilities.
2. **Co-Creation:** This involves collaborating with end-users, stakeholders, and other partners in the design process to create solutions that meet their needs and preferences.
3. **Community Engagement:** This involves the active participation of community members in the planning, design, and decision-making processes related to public recreational facilities.
4. **Cultural Sensitivity:** This refers to the awareness, understanding, and respect for the cultural diversity of community members.
5. **Diversity and inclusion:** This refers to the recognition and acceptance of the differences and unique qualities of individuals within a community or society.
6. **Empathy:** This involves understanding and empathizing with the experiences, emotions, and perspectives of users.
7. **Human-Centered Design:** This is an approach that emphasizes understanding the needs, behaviors, and motivation of users to inform the design process.
8. **Inclusive Design:** This is a design approach that aims to create environments and spaces that are accessible and usable by people of all abilities, ages, and backgrounds.
9. **Participatory Design:** This is an approach that involves involving end-users and stakeholders in the design process to co-create solutions that meet their needs and preferences.

10. **Social Equity:** In the context of public recreational facilities, promoting social equity involves ensuring that all community members have equal access to and can benefit from the facilities, regardless of their socio-economic status, background, or abilities.
11. **Universal Design:** This is the design of environments, and spaces to be usable by all people, to the greatest extent possible, without the need for adaptation or specialized design.
12. **User-Centered Design:** This is an approach that focuses on designing spaces based on the needs, preferences, and behaviors of end-users.

Chapter Two

Literature Review

2.0 Conceptual Review

2.1 Inclusion

Inclusion is a fundamental concept that refers to creating environments where all individuals feel respected, valued and supported, regardless of their differences (Wharton, 2020). Within the social context, inclusion is a concept that focuses on ensuring that all individuals and groups in society have equal opportunities to participate in social, economic, cultural, political activities (Nittala et al., 2024). One of the fundamental aims of inclusion is to reduce disparities, promote equality, and creates a more cohesive and integrated society where everyone feels valued, respected, and included. According to related studies, the concept of inclusion involves embracing diversity, ensuring equitable opportunities, and fostering a sense of belonging for everyone, regardless of their race, ethnicity, gender, sexual orientation, disability, religion, or any other characteristic (Sánchez-Cabrero et al., 2024).

Inclusion recognizes and values the diversity of individuals and groups, because it is believed to enrich environments and promotes creativity, innovation, and broader perspectives (Greco, 2020). Also, inclusion goes beyond diversity to ensure that all individuals have fair and equal access to

opportunities, resources, and benefits, thereby addressing systemic barriers and providing support to those who may face discrimination or disadvantage (Busciantella-Ricci, 2023). Similarly, it creates a sense of belonging that fosters emotional well-being, social connectedness, and a supportive community where individuals can thrive; as well as ensuring that information, communication, and participation are inclusive and barrier-free (Wharton, 2020).

Furthermore, inclusion emphasizes the importance of representation and visibility of diverse voices and perspectives, thereby empowering individuals to participate fully, contribute their unique strengths, and advocate for their rights and needs (UN, 2018).

Inclusion is therefore essential in various contexts, including education, workplaces, communities, and society as a whole, to promote equality, social cohesion, and individual well-being. In fact, social inclusion is crucial for building a fair and just society that benefits individuals, communities, and society. Consequently, inclusion as a transformative concept promotes diversity, equity, and belonging in all aspects of society; and also helps to create more welcoming, supportive, and empowering environments where all individuals can thrive and contribute to a more inclusive and equitable world.

2.1.2 Social Inclusion

The concept of social inclusion refers to the process of creating a society that is equitable, accepting, and provides equal opportunities and access to all individuals, regardless of their background, characteristics, or circumstances. It aims to eliminate barriers and discrimination, promote diversity, and ensure that everyone has the chance to fully participate in social, economic, cultural, and political aspects of life (World Economic Forum, 2020). Social inclusion recognizes that certain individuals or groups may face disadvantages, marginalization, or exclusion due to various factors such as race, ethnicity, gender, age, disability, socioeconomic status, or sexual orientation. It seeks to address these

structural inequalities and create a society that values and respects the rights, dignity, and well-being of all its members (Lloyd et al., 2006; Suryanarayana, 2020). Overall, the concept of social inclusion recognizes the importance of creating a society that values diversity, promotes equal opportunities, and ensures the full participation and well-being of all individuals. It requires addressing systemic barriers, challenging prejudice and discrimination, and actively working towards a more inclusive and equitable future (Greco, 2020).

2.1.3. Key aspects of the concept of inclusion in social Context

Empirical studies have suggested that integrating the concept of inclusion in social contexts are influential in building stronger, more resilient communities that benefit from the contributions of all individuals. Thus, social inclusion is a key principle for fostering social justice, human rights, and sustainable development, and it plays a vital role in creating a more inclusive and equitable society for everyone. The key aspects of the concept of social inclusion include:

i. Equal Opportunities

Equality and equity are two related concepts that are often discussed in the context of social justice and fairness. While they are related, they have distinct meanings and implications (World Economic Forum, 2020). Equality refers to the idea of treating everyone the same, without any discrimination or favoritism. It promotes fairness by ensuring that all individuals have equal opportunities, rights, and access to resources. In the pursuit of equality, people are given equal treatment regardless of their backgrounds, identities, or circumstances. It is based on the principle that all individuals should have an equal starting point and be treated with equal respect and dignity (Paul, 2019). Equity, on the other

hand, recognizes that not all individuals have the same needs, circumstances, or starting points. It takes into account the different barriers and disadvantages that people may face due to factors such as socioeconomic status, race, gender, disability, or other forms of discrimination (Minow, 2022). Equity aims to level the playing field by providing individuals with the necessary support and resources to achieve equal outcomes or opportunities. It involves actively addressing the systemic and structural barriers that perpetuate inequality and striving for fairness by considering and accommodating the unique needs of different individuals or groups (Paul, 2019). In essence, while equality focuses on treating everyone the same, equity focuses on ensuring fairness by addressing the underlying factors that contribute to unequal outcomes. It recognizes that achieving true fairness may require different treatment or interventions for different individuals or groups. It's important to note that the concepts of equality and equity are not mutually exclusive but can work together to create a more just society. In many cases, achieving equality may require implementing equity measures to address historical or systemic disadvantages that certain groups face. By recognizing and addressing inequality through equity, we can strive for a more inclusive and just society where everyone has an equal opportunity to thrive (Minow, 2022). Social inclusion emphasizes equal treatment, opportunities, and access to resources for all individuals. It aims to promote equity by addressing systemic barriers that hinder certain groups from fully participating in society.

ii. **Diverse Participation**

Participation emphasizes the active role of individuals in contributing their ideas, perspectives, and efforts. Participation can occur in various settings, such as social, political, educational, or organizational contexts (Olaleye, 2019). It recognizes the importance of giving individuals a voice and agency in shaping their own lives and the communities they belong to. Participation promotes inclusivity, empowerment, and democratic principles by allowing individuals to have a say in matters

that affect them (Bell & Reed, 2021). Engagement, on the other hand, refers to the level of interest, enthusiasm, and investment individuals have in a particular activity, cause, or relationship (Koprivitsa, 2020). It reflects their emotional and intellectual connection and commitment to the task at hand. Engagement can occur in personal relationships, work environments, educational settings, or community initiatives. It involves active participation, attention, and dedication, often resulting in higher motivation, productivity, and satisfaction. Engagement is often associated with positive outcomes, as individuals who are engaged tend to be more committed, motivated, and effective in their endeavors (Bell & Reed, 2021). While participation focuses on individuals' involvement and inclusion, engagement emphasizes the quality and depth of their connection and commitment. Participation can be seen as a broader concept that encompasses engagement, as engagement is one form of active participation (Brief, 2023). Social inclusion involves actively involving individuals in decision-making processes, community activities, and civic engagement. It recognizes that everyone's voice and contribution are essential for a thriving and inclusive society (Bell & Reed, 2021).

iii. **Empowerment**

Social inclusion involves empowering individuals to exercise their rights, make choices, and have a voice in shaping their own lives and communities. Empowerment helps individuals build self-confidence, develop skills, and advocate for their needs and interests (Tong & An, 2022).

iv. **Social Cohesion**

Social inclusion fosters social cohesion by promoting mutual respect, understanding, and solidarity among individuals and groups. Social inclusion is closely tied to the principles of social cohesion, advocating for fairness, equality, and human rights. It challenges discrimination, inequality, and exclusion to create a more just and inclusive society for all (Nasier, 2020). Social cohesion refers to

the concept of fairness, equality, and the pursuit of equitable outcomes in society. It encompasses the belief that all individuals deserve equal rights, opportunities, and treatment, regardless of their race, gender, socioeconomic status, nationality, religion, or other characteristics. The goal of social justice is to challenge and address systemic inequalities and injustices that exist in societies. It recognizes that certain groups may experience discrimination, marginalization, or disadvantage due to historical, structural, or institutional factors. Social justice seeks to rectify these imbalances by advocating for policies, practices, and attitudes that promote equality, inclusivity, and the well-being of all members of society. It aims to create a sense of belonging, shared values, and a supportive community where diversity is celebrated and differences are respected.

v. **Accessibility**

Social inclusion requires making social structures, services, and spaces accessible to all individuals, including those with disabilities, elderly individuals and other marginalized groups. This includes physical accessibility, as well as ensuring that information, communication, and opportunities are inclusive and barrier-free. Furthermore, social inclusion ensures that everyone has equal access to essential services, opportunities, and resources such as education, healthcare, employment, housing, transportation, and public spaces. It focuses on removing physical, social, economic, and attitudinal barriers to create inclusive environments. It aims to remove barriers and create inclusive opportunities for people of diverse abilities to participate fully in society. Accessibility encompasses various aspects of life, including physical spaces, digital technologies, communication, transportation, education, employment, and public services. It recognizes that individuals with disabilities should have equal access to the same opportunities and experiences as those without disabilities, without facing unnecessary obstacles or discrimination (Zallio & Clarkson, 2021).

vi. **Community Engagement and Prevention of Discrimination**

Social inclusion involves combating discrimination, prejudice, and stigma based on factors such as race, ethnicity, gender, sexual orientation, disability, religion, and socioeconomic status. It promotes a culture of tolerance, acceptance, and respect for diversity (Owamoyo & Tabibi, 2023). Social inclusion encourages community engagement, collaboration, and partnerships to address social challenges and promote positive social change. It involves working together with stakeholders, organizations, and institutions to create inclusive and supportive environments (Busciantella-Ricci, 2023).

2.1.4 Dimensions of Social Inclusion and Exclusion

Understanding the methods by which certain people or groups are excluded is crucial for promoting social inclusion since doing so will only make one understand the problem, tackle the problem and make exclusion a thing of the past. Multiple hierarchies and diverse characteristics of social inclusion are required. Through this process, each person's dignity is acknowledged, their wants and concerns are taken into account, their rights are honored in addition to being protected by law, and they are allowed to actively engage in daily activities. Since social inclusion is a topic that affects all societal stakeholders, it is necessary for the process to occur concurrently at all levels, including the individual, community, local, regional, and national levels.



Figure 1: Dimensions of Social Inclusion
Source: (Greco, 2020)

While social inclusion addresses the informal (individual) level of engagements, it also involves formal (societal) level engagements, ensuring that institutions in society reflect, uphold, respect, and activate the inclusive processes within society. As a result, perceptions and experiences of individuals, as well as how they think and feel, also need to be taken into consideration. A person's experience with and potential for self-actualization are reflected in social inclusion, as are societal abilities to eradicate exclusionary practices and guarantee equitable opportunities for all.

2.2 Community Inclusive Design

The Latin word "communitas," which meaning "the same" or "common," is where the word "community" originates. The Community Center was originally established to solve community issues and enhance quality of life by offering a varied calendar of cultural and educational events that would foster a sense of identity and belonging among people. locals' daily lives (Colistra., Robert, & Dorothy., 2019). People of all ages and genders are invited to the community center, which also functions as a

planned meeting spot for locals. Without regard to age, gender, religion, ethnicity, or any other aspect, this venue hosts a variety of events, including educational, entertaining, cultural, and social programs. Community centers encourage the growth of social bonds, mutual support, social responsibility, self-confidence, and community as part of their community development programs.

coherence. According to Tony et al. (2019), they give families and individuals the resources they need to address typical social issues and enhance their quality of life.

A community center is a designated location where people from the community can congregate, regardless of their age or gender, according to RABIU (2014). These centers offer chances for learning, leisure, engagement in culture, and general well-being. They also give information regarding disparities in age, gender, religion, ethnicity, and other categories.

A community center's accessibility and layout greatly influence how successful it is. In order to build an environment that fulfills the different demands of the population, the study emphasizes the significance of integrated design concepts, such as adaptive spatial layout and universal accessibility (Matteo Zallio, 2021).

Inclusive design is a design that aims to create products, services, and environments that are accessible and usable by as many people as possible, regardless of their age, ability, or other characteristics. it is defined as *“The design of mainstream products and/or services that are accessible to and usable by, as many people as reasonably possible on a global basis, in a wide variety of situations and to the greatest extent possible without the need for special adaptation or specialized design.”*(Kahraman, 2020). When it comes to the built environment, inclusive design refers to the approach of creating spaces, services, and facilities that are accessible, usable, and welcoming to all individuals, including those with diverse abilities, backgrounds, and needs (Kille-speckter & Nickpour, 2022). The goal of inclusive design is to ensure that everyone, regardless of age, disability, gender, culture, or other

characteristics, can fully participate and benefit from the community center's offerings. In other words, implementing inclusive design principles is crucial to ensure that all members of the community can fully participate in and benefit from the facilities and programs offered (Sawyer, 2020).

Furthermore, an inclusive recreation center is one that considers the diverse needs and abilities of its users from the outset of the design process. By taking into account factors such as physical accessibility, sensory considerations, cognitive accessibility, and social inclusivity, recreation centers can create spaces that are welcoming and accommodating to everyone (Zhu et al., 2020). Also, physical accessibility is a key component of inclusive design in a recreation center. This includes features such as ramps, elevators, and wide doorways to ensure that individuals with mobility impairments can easily navigate the facility (Lamirande, 2022). Additionally, accessible parking spaces, restrooms, and changing rooms are essential to enable people with disabilities to fully participate in recreational activities (Peters, 2012). According to recent studies, sensory considerations are also important in creating an inclusive environment (Tantawy & Khamis, 2021). For example, providing quiet spaces for individuals who may be sensitive to noise, using color schemes and lighting that are comfortable for people with visual impairments, and incorporating tactile elements for individuals who are blind or have low vision can enhance the overall experience for all users.

Therefore, cognitive accessibility is another aspect of inclusive design that is often overlooked (Busciantella-Ricci, 2023). By using clear signage, simple language, and intuitive wayfinding systems, recreation centers can help individuals with cognitive disabilities navigate the space more easily. Also, providing staff training on how to interact with people with diverse cognitive abilities can also contribute to a more inclusive and welcoming environment. It thus implies that social inclusivity is a fundamental principle of inclusive design in a recreation center (Okoye et al., 2020). By fostering a culture of respect, acceptance, and diversity, recreation centers can create a sense of belonging for all

members of the community. Offering inclusive programs and activities that cater to a wide range of interests and abilities can help promote social interaction and connections among users (Sawyer, 2020). Therefore, incorporating inclusive design principles into a recreation center not only benefits individuals with disabilities but also enhances the overall experience for all users. By creating a space that is accessible, welcoming, and accommodating to everyone, recreation centers can promote diversity, equity, and inclusion in the community (Kordić, 2020).

2.2.1 Evolution of Community Design.

An intriguing narrative about the evolution of community centers presents shifting social requirements, beliefs, and motivations. A history of urbanization, social advancement, and continuous community integration and unification are shown by observing its evolution (Mamuzo & John, 2024). Due to the efforts of social workers and campaigners in areas that are rapidly urbanizing, community centers in the United States have a long history of social change and community mobilization. Originally, the school served as a community facility, as opposed to earlier strategies that were only concerned with adult education and leisure.

Beyond mere recreational activities, the primary goal of these contemporary social spaces is to foster solidarity both inside and among various sections of the community. Prominent figures such as Edward J. Ward spearheaded a national initiative that aided in fostering community centers to be agent of change.

The community center has grown in popularity, despite some early skepticism from the authorities regarding their possible political impact. The centers were present in over 100 cities by the end of the 1910s, with over 500 of them in New York. By 1930, they had drawn millions of tourists. Early

organizers believed that democratic foreign countries needed community centers like PS63 in New York City.

New community groups and community-based development enterprises are unable to access planning, architecture, and development services that community design centers offer. These design centers' organizational forms span from private practices and university degree programs to non-profit organizations led by architects. Early in the 1960s, there was a growing realization that local communities needed to have a bigger role in influencing the physical environment and taking on greater social obligations, especially in low-income areas. The establishment of the Bureau of Neighborhood Development within the Department of Housing and Urban Development (HUD) and the passing of the Economic Opportunity Act of 1964 were crucial factors in the financial growth of professional advocacy networks like community organizations and community design associations. They now play an even more important function. The Institute of Medicine Control provided a forum for experts to promote the causes of underrepresented groups. Changes in the nation have also been made possible by initiatives such as the Ford Foundation's Gray Areas program and the Civil Rights Act. There was optimism for mass mobilization, but public engagement was limited because many places were still governed by professionals. The community center has grown into a stand-alone entity with a range of social, educational, and charity initiatives over time (Sanoff, 2006).

The World Summit for Social Development, held in 1995, introduced the idea of social integration as a way of creating an inclusive society known as a "society for all" as the main goal of social development. The Copenhagen Declaration and Action Plan, an important outcome of the summit, pledged to achieve the eradication of poverty, full employment and social integration as development goals. Member State committed to promoting social integration by fostering an inclusive society that is stable, secure, fair, tolerant, respects differences and equality of opportunity and supports all individuals, including disadvantaged and vulnerable groups and individuals. Following the

Copenhagen Declaration, important policy commitments were made in the Millennium Declaration adopted at the Millennium summit in 2000-9 (2000). The Millennium Declaration incorporates social integration into a combination of peace, security, development and human rights, further embodying the principles of social inclusion, as well as the goals outlined in the Copenhagen Declaration.

Even with several challenges, it is still crucial to foster social inclusion, civic engagement, and cohesiveness. To address the evolving requirements of communities, continuous assistance and flexible methods are required (Angela Munteanu & Andronovici, 2022).

2.2.2 Social Identity and Social Categories.

One way to conceptualize society is as a collection of social groupings where people identify as distinct individuals with their own set of traits, perspectives, ideas, goals, and so on. shape their individual identities. In addition, people create a social identity and see themselves as members of social groups that others perceive them to be. The definition of social identity is a person's sense of self-worth derived from their sense of affiliation with a particular social group. Individuals' social identities are shaped by their membership in many groups, including those based on gender, age, education, financial standing, ethnicity, religion, language, and nationality. Language, opinions, attire, and behavior are examples of markers that can be used to represent one's social identity. The significance of these markers varies according on how one is viewed by others. People can talk about how important these signals are within their social identity's framework.

Social isolation can result from social identity as well as be a cause of it. People generally want to belong to a group that is innovative and well-respected, as opposed to a low-status organization that weakens social identity and diminishes self-esteem, in order to achieve a positive social identity. A positive social identity is frequently developed by individuals or organizations excluding or rejecting other groups that are thought to be of lower rank. Ironically, in an attempt to boost their self-esteem,

groups who are alienated and separated from other groups are more prone to discriminate against those that have a higher or lower status. Stereotypes based on appearance, age, physical status, gender, sexual orientation, ethnicity, religion, political affiliation, and social affiliation can lead to power disparities between groups with distinct social identities. This may result in to the categorization of others through labels. These labels have been given significance and value by those in positions of authority, which has resulted in social exclusion, discrimination, and restricted access to socioeconomic resources. Although these classifications and names appear to represent their true essence, social interactions and cultural norms really shape their meaning. Rather than being an essential feature, they ought to be viewed as the result of an individual's interactions with his surroundings.

It is critical to alter the culture in which negative traits are viewed and valued, as well as the dynamics of power inequality, in order to accomplish social integration. This is a challenging challenge that needs to be resolved on all societal levels. It is critical to include marginalized people and offer them the chance to contribute to the interpretation and valuation of their own traits, symbols, and social identities. Social norms apply to all identity groups without necessarily merging individual or group identities because some communities wish to maintain their own group identities, languages, traditional beliefs, worldview, and lifestyle without assimilating into mainstream society. This is achievable in a welcoming community where one can be part of the community. The goal of social integration is to have society accept everyone, including those who are different from them and those who don't fit in, so that everyone can take part in defining what their social identity means. An inclusive, dynamic society that values variety and fosters a sense of belonging will be the end outcome. (United Nations, 2007). An inclusive community would carter for the following categories:

1. Women

"It is impossible to achieve our goals by discriminating against half of humanity." Kofi Annan, 2006

Global patriarchal societies have created gender norms and power imbalances that continue to disadvantage women over males in a variety of spheres of life. This inequality is common in households where women are socially marginalized as a result of problems like poverty, violence against women, and restricted access to resources and decision-making. Efforts to eradicate poverty are hampered by the large number of women who live in extreme poverty with limited access to credit, land ownership, education, and employment. This imbalance is made worse by the fact that women's labor is frequently undervalued or paid inadequately.

2. Youth

The 15–24-year-old demographic, which accounted for 1.2 billion people worldwide in 2024 and represented 22% of the global population, is regarded as the most educated in history. They are extremely adept at using technological advancements to acquire enormous volumes of data and information from all around the world. However, because they confront obstacles to economic, social, and political participation, many young people—especially those in developing nations may not necessarily benefit from these advantages. Youth face greater rates of underemployment and unemployment in many nations. Lack of education and inadequate training are just two of the many problems that make it harder to find excellent and meaningful work. The dilemma of youth unemployment denies young people the chance to live independently and the fundamental materials need to start families and make contributions to society. A common belief among adults is that the advantages of youth involvement are more beneficial to the youth than to society at large. Young people are frequently invited to participate in tokenistic or shallow adult-organized political or social events. Youth have a greater energy for leisure and fun.

3. Older Persons

Elderly people are becoming more prevalent, particularly in developed nations. Presently, one in ten individuals are 60 years of age or older. By 2050, one in five individuals will be 60 years of age or older, and by 2150, one in three individuals will be 60 years of age or older. In certain wealthy nations, the elderly already make up 25% of the population. In certain nations, it is anticipated that by the early part of the twenty-first century, that percentage will rise to over half. There is a great deal of discrimination against the elderly, and in some aging societies, younger people are starting to have unfavorable views about getting older. It can be challenging for people who are out of employment to relinquish the identity and significance that come with their work and to leave a team with a shared goal. In actuality, human diversity rises with age, and the accumulation of experiences across the lifespan broadens the variety of ways in which older adults form their identities, despite the pervasiveness of preconceptions about them in many sectors.

4. Persons with Disabilities

Individuals with impairments are vulnerable to marginalization and exclusion. They frequently encounter obstacles that prevent them from fully engaging in the community and socioeconomic systems to which they belong. Physical and social barriers brought about by ignorance, apathy, and prejudice are the root cause of these issues. Negative preconceptions and biases against those with disabilities continue to exist in many parts of the world, leading to social marginalization. Ten percent of the world's population, or 650 million people, are estimated to have impairments. The majority of them roughly two thirds—live in developing nations. Approximately 20% of the population in certain emerging nations is disabled in some way. Physical barriers that prohibit individuals with disabilities from engaging in public spaces hinder a great number of them from being actively involved in society such as small openings, stairs that lead to cars, trains, and airplanes; inaccessible light and phone

switches; and objects that are out of reach. Other kinds of barriers that they might run into include written information that fails to consider the requirements of individuals with visual impairments or communication that disregards the needs of those with hearing impairments. While many of these obstacles are the result of carelessness or ignorance, they are completely preventable with advance planning. People with disabilities are typically avoided in social situations and in direct communication. Many disabled people experience psychological and social problems as a result of the pervasive prejudice and discrimination against them as well as their isolation from social interactions. The terminology chosen to describe individuals with disabilities is equally crucial part that can prevent group's societal isolation. It is obvious that phrases like "mentally retarded" and "cripple" are disparaging. At the moment, there is a great deal of debate regarding climate change. There are those who maintain that it doesn't exist, while others contend that it is a significant issue that requires immediate attention. Despite differences in view, scientists point to data showing that human actions like burning fossil fuels and deforestation are causing the Earth to warm at an alarming rate. Greenhouse gas emissions rise as a result, adding to global warming by trapping heat in the atmosphere. Global warming is already having an impact, as seen by the rise in sea levels, an increase in the frequency and severity of natural disasters, and changes in ecosystems and rising sea levels. Numerous scientists caution that disastrous outcomes will result from inaction on reducing carbon emissions and adapting to climate change. In order to combat climate change, it is critical that corporations, governments, and individuals collaborate to discover solutions. In order to address this worldwide issue and encourage sustainable habits going forward, education and awareness-building are essential. Sadly, there isn't a sentence here that we can paraphrase. Please let us know the statement you want us to paraphrase. (Kristie L. Ebi, 2021)

2.3 Design Consideration for an Inclusive Entertainment Center.

Shopping malls play a significant role in public spaces, in communities particularly in megacities where they provide a diverse array of recreational opportunities to promote inclusivity and engagement among all guests. These facilities are essential to enhancing lives and fostering autonomy without stigmatization. The inability of many public facilities to be used for recreational purposes prevents people with disabilities from fully engaging in society (Y. Afacan) claims that shopping malls have grown to be a significant feature of Turkish urban life, reflecting shifting leisure and consumption patterns. Turkey now has ten times as many shopping centers as it did ten years ago, mostly as a result of foreign investment and liberalization.

The need for these new shopping complexes has grown even more as a result of traffic jams and safety concerns in urban areas. Entertainment and shopping centers require improvement in terms of cooperative activities, social contact, independence, and the promotion of overall well-being, despite their contemporary style and upkeep. A variety of players, including businesses, designers, and academic institutions, collaborate on research on inclusion in these settings; all of these parties should put the needs of their users first. A more comprehensive viewpoint on user concerns can inspire designers to build more welcoming surroundings, foster social awareness of safe spaces, and foster empathy for other people. Hence, the influence of retail centers extends beyond the realm of consumerism, encompassing social and environmental facets, underscoring their function in fostering inclusivity (Çiğdem Belgin DİKMEN, 2021). Therefore, designing an entertainment center involves careful consideration of various factors to create a space that is engaging, functional, safe, and aesthetically pleasing for visitors. Whether it's a cinema complex, an amusement park, a bowling alley, or a gaming arcade, designing an entertainment center requires a thoughtful approach that takes into account the needs and preferences of the target audience. Here are some key design considerations for an entertainment center:

1. Layout and Circulation

This describes how the space or building is designed to facilitate human flow both vertically and horizontally through the use of staircases and lifts. The circulation direction in a building can be horizontal or vertical. If circulation is described as horizontal, it refers to how people move in and around on a specific floor or level; however, if circulation is described as vertical, it refers to the relationship between the levels: specifically, how people move between the various floors (Supervisor & Abbasian, 2019). Moving walkways and corridors are examples of vertical circulation methods, whereas lifts, stairs, escalators and ramps are examples of vertical circulation methods. Circulation can also be broken down into direction, the type of use, the frequency of use and time of use. Circulation within Interiors refers to how people move through and around a building over time (Fidelis et al., 2020).

The rate of circulation movement can be fast or slow. The speed of movement is determined by visibility and the density of people in the area.

Private and Public refer to different zones of circulation. If a circulation route is considered to be within a public zone, it implies that the area is easily accessible; for example, a lobby. A private circulation route, on the other hand, will include the back of house and staff circulation passageway (Azeez et al., 2016). These two types of circulation zones will differ functionally and aesthetically, depending on the level of use (how busy it is). Private circulation routes will be designed to maximize productivity and efficiency, whereas public circulation routes will be more appealing and aesthetically pleasing.

When planning they do not need to be ugly or hidden away: circulation routes are beautiful key architectural feature (Mehrotra et al., 2018).

One must ensure that the pathway is clear and well-lit when evaluating the different circulation paths. It must be made sure that the circulation path is the safest and fastest way to leave the

building if it serves as a fire escape route. One of the first things taken into account in hotel design is the circulation flow, which frequently influences the rest of the interior design idea. In addition to fire safety and general use circulation, the public and private circulation paths must be properly specified within hotel buildings. Storyboards and floorplan maps are common ways for various circulation patterns to communicate. Exploring the 3D perspective or axonometric of the various circulation routes might further highlight them. (Sawyer, 2020). Circulation paths are crucial for both employees and patrons in cafes, bars, and restaurants. The interaction between the kitchen and table service, for example, is significantly impacted by circulation. When designing this kind of circulation route in hotels, time and efficiency must be taken into account, as well as the optimal path to prevent mishaps. The circulation paths to the restrooms should be taken into account for visitors, as should the flow and access routes that will prevent workers from becoming obstructed or ending up in a private area when under pressure. (Alahudin et al., 2020). In order to minimize interference between the front and back of the house, circulation pathways should be adopted. Mapping out clear circulation pathways can help explain distinct zone locations, where to access the various floors, and the location facilities like food and restrooms, in addition to hotels and buildings like museums and galleries. This is crucial in public buildings like this one because people will frequently be here for extended periods of time and will want to know where the different restrooms and break areas are when they first arrive. This will assist the visitor in planning how to move through the interior while there.

2. Safety

In every industry, but particularly in commercialized ones like hotels, security is crucial. Hotels are expected to implement appropriate security measures to protect the safety of

residents, visitors, and staff because they serve a lot of people and are open around-the-clock (White, 2022). Many visitors view the hotel as their temporary residence while in the nation, so they search for a location that would offer them both security and comfort. Although the facilities and other advantages of staying at a hotel could seem quite alluring, you should focus first on how they prioritize and implement security measures to ensure that their clients receive dependable service and preserve an overall (Mason, 2003).

Emergency Response Plan

In the event of an emergency, the staff team should be thoroughly briefed on what to do. To have a solid communication plan in place and be able to update it as needed, regular meetings with emergency services and law enforcement should be planned. By doing this, it will guarantee that the workforce is sufficiently prepared so that, in the worst situation, everyone is composed and informed.

3. Accessibility and Inclusivity

Designing for accessibility is essential to ensure that people of all ages and abilities can enjoy the entertainment center. This includes providing ramps, elevators, and designated seating areas for individuals with mobility impairments, as well as incorporating sensory-friendly elements for those with sensory sensitivities (Kordić, 2020). Inclusivity in design helps create a welcoming and accommodating environment for all visitors.

Accessibility can be defined as features that render an area or activity inclusive, or the degree to which a space, in a tangible setting is readily used and enjoyed by a person with a disability. Accessibility is the degree of enjoyment that someone with disability can derive in a space. The entirety of human differences, including sexual orientation, age, culture, dialect, and ability, is make use of a space. It is

made up of all the human differences, including sexual orientation, age, culture, and ability, that represent autonomy and interdependence, nobility and interdependence, nobility, consideration, integration, and uniformity of opportunity that can be used or experienced in a way that achieves uniformity. The phrase suggests an acknowledged understanding, strategy, and/or attempt to remove obstacles. Society gains from accessibility when things are more egalitarian and user-friendly. It improves equity and facilitates use for all (Christine Hancock, 2023).

The notion that impairment arises at the nexus of individuals and their circumstances is fundamental to the an accessible design plan. Planning that is inclusive acknowledges that arrangements that are beneficial for individuals with disabilities are probably beneficial for others in other situations as well. This pertains to benefit providers' and travelers' conduct as well as the physical infrastructure planning and psychological health. The conclusions and findings of the Plan's work are essential to the Open Plan. It seeks to establish, beyond a shadow of a doubt, successful access to websites and other computerized facilities for individuals with disabilities. It is based on existing regulations that have been distributed by various legislative authorities and trade associations.

Accessibility and inclusive planning go hand in hand, but inclusive planning is a method of doing planning rather than an end product. (Hans Persson, 2014)

Accessibility is an initial step toward opening up the building to various users. 'Making buildings accessible and useable for individuals with disabilities' is the mandate of inclusive planning. The notion that disability arises at the intersection of people and their circumstances is fundamental to open design. Planning that is inclusive acknowledges that interventions that are effective for individuals with disabilities are probably effective for others in various situations. Openness and inclusive planning are two different things, yet one of the most crucial results of effective inclusive planning is openness (S Boucherit D. B., 2022). All three terms inclusive planning, inclusive planning, and planning for all—

refer to methods that essentially aim to increase the intelligent system's openness to maximize its use by everyone.

According to ISO Direct 71, accessibility is "criteria-driven design that enhances a standard plan to maximize the number of potential customers for whom items, buildings, or benefits are readily accessible to people with some type of current disability. (ISO, 2001) " This includes having a standardized interface that complies with elements specifically designed for people with disabilities, as well as making items and operations universally accessible and diverse for users (client interface adaptation). defined in accordance with the American with disabilities acts design guideline. In principle, it states that "No private person who owns, leases (or rents) or operates in an open billing place shall segregate any person on the basis of disability in the ascendancy to the fullness and enjoyment of goods, services, offices, benefits, attention, or accommodations in an open billing place." (Americans with disability acts ADA, 2008).

Accessibility is a more expansive vision of potential results is implied by an all-inclusive design, allowing all users to utilize a good or service in addition to assistive technology when necessary. This idea is well ingrained in Asian programs, particularly in Japan. "Universal assembly" can also refer to a strategy for influencing society's justification for innovation. Universal get-togethers are characterized somewhat differently in the field of human-computer interaction (HCI), where they are viewed as a method of consideration rather than as the end product of preparatory preparation. A process for developing data society technologies that are open and available to all citizens, including special needs individuals, Universal Get To is "a deliberate and systematic effort to actively apply the standards, strategies, and devices of the Universal Plan including elderly individuals, special needs children, and others with a range of disabilities". This is how accessibility is done. Therefore, in the practice of universal accessibility, accessibility is a perspective that is becoming more and more important to society as a whole, not just to individuals with physical or cognitive limitations (Christine Hancock,

2023)

Accessibility allows for inclusive forms and outcomes are in line with accessibility requirements. They also permit the application of open planning strategies. "Every effort should be made to ensure that 'everyone is at the table' and that lively participation is reflected in planning choices," is one example of an inclusive form and outcome. People with impairments should be included in venture planning. People with disabilities should be included in venture development, and the variety of disabilities they experience, fluidity, quality and endurance, scale, height, cognitive ability, and latent capacity should all be taken into account. (Christine Hancock, 2023).

4. Way Finders

The process of determining direction based on environmental cues to a given destination in a known or unfamiliar environment is known as navigation (Anna Charisse Farr & Kleinschmidt, 2012). Common everyday directions may appear simple enough to convey and comprehend at first. However, a lot of studies have shown wayfinding's true complexity due to its extensive use and the need to make it better and simpler.. (Darrell L. Butler, 1993) . Because way finder systems give visitors an interactive experience, they are among the most appealing uses of digital signage. Usually placed at key spots throughout the museum, they comprise a number of touch screens or multimedia totems that display details about current and upcoming exhibits, locations, and museum events. Way finder systems employ a combination of software and technology to direct guests through the museum and help them find their way around. These digital orientation maps, which are usually made to function on enormous touchscreen totems, are the outcome of meticulous planning that centers the museum experience around the visitor. The Way finder system can also be used to get data on visitors and their behaviors. Exhibition design can be enhanced with the usage of this data.

Clear signposts are not the only aspect of wayfinding. It is critical to take into account the psychological aspects of human navigation. To find their way around a building, people rely on their senses, the information that is given to them, perception, prior experience, and social norms. For instance, cafes are typically found on a building's first floor. Navigating a building makes one realize that this is a typical site, despite its practical reasons. It's now considered normal procedure. Maps are typically found inside and close to entrances in complex buildings and campuses, which causes the brain to look for maps based on prior experiences. Hospitals typically have standard signage: department and area lists are posted on boards, and instructions are clearly marked with arrows throughout the hallways. It's easy because of the familiar layout.

It can be challenging to traverse alternative systems, but the hospital's well-known layout facilitates mental association with that specific method of direction-finding. Understanding that various people approach navigation in different ways is crucial. While some people would rather ask someone for directions when they get there, others would rather download maps and plan their route in advance. Some others would rather explore their surroundings first before making their way to their objective.

(Authority, 2019)

5. Inclusivity/ Universal design

The needs of users including their physical makeup, size, abilities, and cognitive levels—are the primary focus of design in a variety of sectors, including architecture, industrial design, interior design, landscape architecture, and urban and rural planning. Children, the elderly, and those with disabilities are examples of marginalized populations that are frequently taken into consideration. Providing for the needs of all users without distinction on the basis of age, gender, physical ability, or cognitive level has taken precedence in recent years. This means that rather than making changes after the fact or

excluding particular groups, it is vital to take into account the interests of various users throughout the design process in order to provide designs that improve people's lives. It is commonly acknowledged that "universal design" refers to an integrated process for creating environments, structures, and goods. This idea highlights how crucial it is to design for all users, accounting for lifetime changes in a person's aptitude, physiology, and perception. It adheres to concepts like flexibility, simplicity, ease of use, and intuitive design to make environments, structures, and products accessible to everybody.

Through the inclusion of all people in the design process rather than just specific groups, universal design seeks to make users' lives easier. This method creates designs that are flexible enough to accommodate shifting needs, enhance users' quality of life, and create places and products that are appropriate for a variety of users.

Human-centered design, sometimes referred to as user-centered design, adopts a comprehensive strategy that puts the requirements of all users ahead of those of specific groups. It seeks to develop goods, areas, buildings, and surroundings that are equitable, flexible, and appropriate for people of all ages, genders, sizes, capacities, senses, and perceptions. Shopping centers are significant public areas that should be planned to accommodate uses other than just shopping. Shopping centers that are aesthetically pleasing, easily accessible, and encourage social interaction are critical to enhancing the general well-being and pleasure of their patrons. (Çiğdem Belgin DİKMEN, 2021)

6. Flexible and Adaptable space

The capacity to utilize space differently without altering the building's structural integrity is known as flexibility.

The ability to modify the workplace's structure to accommodate changes with relative ease is known as

adaptability. Direct user control is necessary for this degree of adjustability. A building's adaptability is its capacity to change significantly. Changes in the social, economic, and physical environments as well as in the requirements and expectations of the occupants are unavoidable over the course of a building's life. Adaptive architecture encompasses both structures that are entirely powered by internal data and structures that are made to change with the environment, its inhabitants, and their possessions. Adaptive housing" refers to housing that is planned and constructed to allow for future adjustments that will make it accessible to individuals with disabilities (Estaji, 2017).

Because of the constant changes in our lives and people's internal desire for new and improved living necessities, adaptability is essential in engineering. This essay looks at a few of the numerous attempts to define concepts of adaptability across a certain system. Flexibility in design allows for changes to be made without hindering or damaging building growth, which shows that these changes should be considered in the early stages of the plan. In architecture, the main goal of adaptability is to provide diversity among the units in a spatial sequence of action; however, adaptability encompasses the ability of units to be flexible and alter over time, as well as the flexibility of buildings (Benoit Couraud, 2023)

Adaptability refers to a structure's ability to optimize its value over the course of its life and adapt to changing needs. Adaptability in the biological plan refers to the ability to reconstruct and modify the constructed environment in response to changing natural requirements. The term "adaptability" refers to a structure's ability to alter in response to the evolving demands and preferences of social orders, including technological, social, and financial developments. Display encompasses three notions of adaptability: spatial, functional, and aesthetic. These have to do with the ability to change work, place, and character throughout time, individually. Consequently, flexibility increases building lifespan and reduces waste, enabling buildings to fulfill maintainability standards for an extended period of time (Sadhana Jagannath, 2024).

Flexible and adaptable buildings are ones that accommodate various uses determined by the occupants' actions. Buildings can be adapted to serve one or more functions and suit various capacities determined by the tenants' activities. The term "mobility" refers to structures that have the ability to change their physical location. thereafter achieve the variety and adaptability of their purpose and reuse. Buildings that are transformable can alter their location, form, and appearance by physically transferring their exterior shell, interior surfaces, or auxiliary parts. When all of the building's components improve how spaces and people interact with one another, intelligently designed buildings will have achieved their goals (Anupa Manewa, 2013).

Using adaptability effectively creates a setting where everyone feels capable and at ease while also requiring preparing for the evolving talents and preferences of customers. Design ought to be inclusive, acting as a useful tool and a practical item for individuals with different abilities. Make sure every user has an equal chance to interact with and gain from the design. Users shouldn't be stigmatized or made to feel different; everyone should have access to secure environments with aesthetically pleasing features. Every user has different needs and preferences, and design should take those into account (Estaji H. , 2017) . Give top priority to adaptable usage strategies that accommodate left- and right-handed users, encourage accuracy and precision, and let users work at their own pace. Regardless of the user's experience, degree of focus, or language skill, design should be simple to use. Cut out any superfluous complexity, have faith in the user's intuition, and take linguistic and cultural variety into account. Clearly arrange critical information, and maintain efficient communication throughout the building through the use of speakers, signage (Fiyinfoluwa Stacy Akerele, 2022).

It is imperative that the design effectively communicates crucial information to people, irrespective of their exterior surroundings or particular abilities. Wayfinding and signage are essential elements of this adaptability. Improve the underlying data's clarity, make use of descriptive components like

illumination and reference points, and make sure that the tools and methods are compatible with those that people with disabilities may use.

The design should reduce the possibility of mistakes and unexpected effects from thoughtless or unintentional activities. Assist with this by putting fall safety first, teaching users about potential hazards, and organizing components to lower risks. Make sure nothing important is missed. The facility should help all users to easily find the facility efficient and comfortable, requiring the least amount of physical exertion (Mahmoud Abd El-Rahiem Sayed, 2024).

7. Sustainability.

The safety of everyone, especially those who are sensitive to chemicals, should be guaranteed by the use of environmentally friendly building materials. These substances ought to be safe for the environment and non-toxic. To reduce the impact on the environment and guarantee guest comfort, energy-efficient lighting, heating, and air conditioning systems should be implemented. Additionally, water-saving techniques such as establishing rainwater harvesting systems for landscape irrigation and water-saving fixtures in restrooms should be put into practice (Happy Ratna Sumartinah, 2024).

Meeting present needs while protecting the capacity of future generations to meet their own is the aim of sustainability. In addition to natural resources, we also need economic and social resources. The goals of sustainable practices are to improve human, environmental, and financial well-being (University) . Sustainability acknowledges that resources are limited and should be used carefully, taking long-term effects and priorities into account. Securing a brighter future for our children and the earth we will leave to them is fundamental to sustainability. The idea of sustainability is not new; indigenous people have long used it to live in balance with the natural world. This information, referred to as traditional ecological knowledge, consists of deeply ingrained perceptions of the interactions that exist in ecosystems between humans, flora, animals, and other natural phenomena.

When both the rate of pollution and the rate of human consumption do not outpace the capacity of the natural world to recover, ecological sustainability is attained. A society's capacity to uphold human rights and provide for necessities like healthcare, education, and transportation is referred to as social sustainability. Individual, labor, and cultural rights are safeguarded, and discrimination against all is ensured, in healthy communities (Tennakoon, Janadari, & Wattuhewa, 2024). The ability of communities everywhere to maintain their level of self-sufficiency and access to the resources required to meet their own needs—thereby guaranteeing a stable living environment for all—is known as economic sustainability. Environmental sustainability is the moral management of natural resources to meet current needs without jeopardizing the ability of future generations to meet their own. By reducing carbon emissions, promoting renewable energy, and ensuring equitable access to resources, it aims to achieve a balance between social, economic, and environmental goals (Md. Ziaul Islam & Islam, 2023).

The built environment's contribution to climate change and the urgency of the climate problem are acknowledged in the principles of sustainable development. They acknowledge that The system places a strong emphasis on making decisions in post-secondary education settings that benefit the environment, such as aiming for or getting ready for net zero. As an illustration, aiming for or getting ready for net zero. There is a need for implementation targets and measures related to water conservation, energy use, and nursery gas emissions. Targets and implementation strategies ought to be put in place to In order to advance toward support goals, implementation targets and measurements must be put into place. Decision-makers are encouraged by the guideline to balance opportunity costs and life cycle costs. The regulation pushes decision-makers to balance life cycle costs and main sacrifices and potential costs in light of their expansion's expenses. Furthermore, the system takes into

account how the built environment must respond to and adapt to climatic hazards as a result of the planet's and climate's changing. Universality (Christine Hancock, 2023).

Universality acknowledges that the climate has changed due to climate change. The future holds more changes for it. Planning the built environment accordingly is essential to ensuring that it can anticipate, adapt to, and eventually recover from the effects of climate change. The built environment needs to be able to show that it can foresee, adjust to, and recover from climate change's consequences in a practical and appropriate way.

2.3.1 Family Friendly Design

Spaces designed with people in mind should be both visually beautiful and practical, accommodating each family member's needs and fostering a sense of coziness throughout. An important part of many design features, such as environmental factors, façade design, urban planning, and site design, is creating spaces that improve the quality of life for families. Intentional differentiation is crucial in preventing the segregation of social contact in urban environments, according to social science theories, particularly in the context of urban planning. Planning and spatial design within residential complexes must be in harmony with social interaction and cultural norms in order to achieve desired results. In residential complexes, open spaces around residences serve as public areas where social functions take precedence over communication ones. Benefits are frequently highlighted in modern architecture rather than cultural and personal aspects. Instead of focusing on the cultural and individual demands of the occupants, modern architecture frequently highlights the advantage. The primary issue with private residential areas is the mismatch between the residents' cultural and behavioral traits and the complex's physical layout.

Engels argues that the family is a legally recognized unit that unites individuals of all genders via

enduring bonds, religious sanctity, and strong emotional bonds. This social compact has significant cultural implications. Since marriage is valued more than membership in other social groupings, it has a significant impact on how families are organized within apartment buildings. According to Anthony Giddens, a family is a collection of individuals united by close bonds, where adults are in charge of raising the children. Family members including mothers, fathers, siblings, and grandparents are bound together by kinship bonds, which are created through marriage and blood links. According to Burgess and Locke, a family is a collection of individuals that live together as a single social unit, interact through marriage, kinship, and mutual identification as family, and share a similar culture. According to Mac Iver, a family is a collection of individuals who raise children, have consistent and unique sexual relationships, and have children of their own. The idea of a family has a sacred rather than merely social significance since attitudes about family members and the caliber of connections can change across time and space. Resources (Mohammad Mashayekhi, 2012).

2.4 Components of an Entertainment Centre

Entertainment centers are sophisticated locations that provide a wide spectrum of people with recreational and leisure opportunities. Although the features of entertainment centers might change based on their size, location, and intended audience, they usually consist of the following fundamental components. Literature review suggests that there are five vital components of inclusiveness; they are Attraction, Accessibility, Accommodation, Amenities and Activities.

1. Recreational Facilities:

Attractions are where recreational activity begins. There must be an attraction at a location or destination before people or tourists will go there. Of all the elements, attractions are thought to have the biggest influence (Raymond et al., 2017). They have the power to make or ruin a trip. There are

two categories of attractions: Lakes, rivers, mountains, and other natural features, as well as man-made attractions like monuments, museums, retail centers, etc. (Ignos, 2022). Any tourist's main goal is to experience the site, while accommodations and accessibility obviously play a role. Although transportation, lodging, activities, and facilities can all serve as attractions, it might be argued that tourism cannot exist without them. The initial stage of the tourism supply chain is attractions.

2. Transportation Facility:

Since it establishes a connection between the market source and the destination, accessibility, or more simply mobility, is a crucial part of the tourism system (Ramyar & Halim, 2020). In the event that there are attractions, tourists must visit them. Typically, transportation is a requirement for the operation of the tour rather than a goal. But occasionally, transportation may also turn into a draw. Take IRCTC's tourist trains, like as the Maharajas' Express and Royal Rajasthan on Wheels (Sida, 2023). There are many other ways to get around, including by car, train, air, and boat. Whichever form of transportation is used, it should ideally be suited for the traveler, comfortable, dependable, and reasonably priced.

- A key factor that significantly affects the expansion and development of the tourism sector is transportation.
- Regardless of whether an attraction is man-made or natural, visitors cannot go from their starting point or current location to a destination without accessibility.
- A tourist can travel to any location in the world using a variety of modes of transportation.

3. Accommodation facility:

One of the most important components of a destination is lodging. Any traveler who decides to go somewhere will first search for lodging that meets their demands (Mason, 2003). It should satisfy him or her by offering food and drink services, sleeping quarters, etc. The lodging facilities themselves serve as popular tourist destinations (Ignos, 2022). There are a few locations that tourists exclusively go to because of their hotels. Some examples of hotels where guests must pay to enter the premises are Palace Hotel Chail and Umaid Bhawan Palace in Jodhpur. In this sense, lodging facilities are regarded as tourism products in a number of locations across the globe.

Goals of Accommodation

- i. Accommodations for various guest kinds include food and housing.
- ii. The guest should have pleasant lodging and receive high-quality services and amenities from the lodging unit.

Types of accommodation

- i. **Serviced Accommodation:** This includes the services offered by hotels, resorts, lodges, boutique hotels, homestays, motels, guest houses, heritage hotels, and more. Various hotels are set up to provide guests dining and accommodation services.
- ii. **Self-Catering or Supplementary Accommodation:** This category includes establishments that provide lodging without hotel amenities. In exchange for daily payments, it offers lodging and food. For instance, PatiPauwa, Dharamshalas, Youth Hostel, tourist vacation villages, etc.

4. Amenities:

When visiting a new place, every traveler wants top-notch amenities and services. The industry makes tremendous efforts to meet their demands. Every tourism destination or center benefits from having top-notch facilities (CDC Group, 2020). Services like swimming, boating, yachting, surfing, and other

facilities like dancing, recreation, and other forms of amusement and entertainment are crucial for every tourist destination, including coastal resorts. There are two types of facilities: man-made, such as numerous entertainment options that may accommodate the different needs of the different tourists, and natural, such as beaches, sea-bathing, fishing chances, trekking, climbing, or viewing, etc. (Kordić, 2020). Excellent beaches that offer wonderful bathing conditions and are shaded from the sun by palm and coconut trees make for an excellent tourist destination. Other natural resources, such as big bodies of water for cruising or opportunities for fishing and hunting, are also quite important. The services a traveler needs to make his trip easier are known as amenities. Roads, sewage systems, power grids, phone lines, and other infrastructure facilities like police stations, ATMs, forex booths, hospitals, etc. are examples of amenities. Even though the majority of these facilities were created especially for locals, visitors also make use of them. These amenities are referred to as "resident-oriented products" in the context of tourism products.

- Amenities comprise a range of additional services and facilities that guests need when traveling to diverse locations.
- Facilities that enhance the attraction are known as amenities.
- Amenities also include things like granting visas and tickets for flights, trains, etc.

Types of amenities:

- i. Natural: beaches, swimming pools, fishing, rock climbing, hiking, river views, sunrises, etc.
- ii. Man-made: Internet, dance, music, theater, movies, swimming pools, fairs, and festivals, among other things

5. Activities

Attractions are often assisted by various activities that enhance tourist experience (Oladinrin et al., 2012). For example: a lake in Nainital may have boating and cruise facilities, a monument in Agra may offer a guided tour by a tour guide or a light and sound show in Khajarahho, hiking in a mountain, skiing in the snow slopes in Himalayas, white water river rafting in Ganges River, fishing in Manalsu river, paragliding in Bir, Trek in Hamta pass et al.

Retail, food, drink, and entertainment all come together in one place at entertainment complexes, which are multipurpose spaces. An entertainment complex can be turned into a lively, diverse destination that welcomes a wide spectrum of patrons and provides a variety of thrilling experiences by carefully organizing and combining these components. Other components are:

- Offices
- Restrooms
- Outdoor Areas
- Interactive and Augmented immersive zones
- Art and cultural zones
- Wellness and relaxation zone
- Sport and fitness facilities
- Event spaces (Concert, conference, meeting rooms, Banquet halls)
- Gaming Zones
- Boutiques
- Cinema/ Movie Theatre

2.5 Process of Inclusive Design.

Inclusive design, is a method of developing settings, goods, and services that are usable by everyone regardless of age, ability, or other variables. The Empirical Evaluation of Inclusive Design looks at numerous research papers, case studies, and practical applications to determine the benefits and drawbacks of applying inclusive design concepts in diverse contexts. Products and services with inclusive design are made available to everyone, irrespective of age, ability, or other variables. To determine the efficacy and difficulties of using inclusive design principles in a range of contexts, a number of studies, case studies, and real-world applications are examined in the empirical evaluation of inclusive design. The goal of inclusive design is to provide spaces and goods that can be utilized by as many individuals as possible without necessitating specialization or customization. It is founded on the ideas of fairness, usability, and accessibility and seeks to satisfy the requirements of many users right away rather than changing solutions afterward. One of the cutting-edge techniques that helps to comprehend the diversity of people and create public places that suit their demands is inclusive design, or IC. According to the Convention on the rights of persons with disabilities, inclusive design is the process of developing goods, procedures, settings, and services that, to the greatest extent feasible, are usable by everyone without the need for unique customization or adaptation. Often known as "design for all," inclusive design encompasses everyone, not just those with impairments (S Boucherit, 2022).

2.6 Inclusive Design for Human Values

The foundation of inclusive design and the primary strategy that sets it apart from other design philosophies is an understanding of human diversity. As was mentioned in the section on conception, diversity can be expanded to include social and cultural aspects, the environment, and the individual tastes and lifestyle of users in addition to age and ability. According to research, "values are

determinants of virtually all kinds of behavior that could be called social behavior" (Rokeach, 1973). These values are internalized as a result of cultural, societal, and personal experiences and are psychological structures that have their own implications. In order to comprehend the diversity of human values, which encompass all aspects of human diversity that are internalized and then manifested in human behavior, efforts have been made.

While there aren't many studies that specifically address design for a range of human values, previous research (Lim, Giacomini & Nickpour, 2018) examines the psychosocial dimensions, where "value" is one of the dimensions that parallels the "cognitive," "emotional," and "social" dimensions. Three sub-themes—satisfaction, happiness, and self-esteem—that are further subdivided into several codes make up the value dimension. Although this work advances the idea of inclusive design for human values, more investigation is needed into the ways in which these varied values might be made visible. For instance, it is maintained that people should be able to discuss and express values in their own terms while discussing an inclusive, value-sensitive design viewpoint on identity technology management (Briggs & Thomas, 2015). design that is inclusive of human values.

Only a few universal values shared by all people have been found by pertinent empirical research. Since inclusive design is meant to acknowledge and celebrate the entire spectrum of human values, tensions nevertheless exist between the variety of values and the universality of values. The connection between ethics and values in inclusive design is the subject of another line of inquiry (Bianchin & Heylighen, 2018). According to Bianchin and Heylighen (2017), there is a conflict in inclusive design philosophy between "addressing the needs of the widest possible audience" and "considering human differences." To overcome this dilemma, however, the theory of just design was created, which was derived from Rawls' notion of justice as fairness (Rawls, 1985; Bianchin & Heylighen, 2018).

Turning it into a question about how design can be equitable, designing inclusively entails aligning consumers' preferences with the conditions outlined. However, they also note that when the "overall usability for the offs is maximized," this can be achieved at the social level rather than at the individual level. Heylighen & Bianchin (2017). Since the fair issue can only be handled at the social level, they only provide a partial response to the subject. Economic theories, particularly welfare economics and institutional economics, provide another explanation (Li & Dong, 2019). How to allocate the freedom of choice in a market with free competition is the aim of inclusive design at the person level.

2.7. Human wellbeing, Safety and Security

The environment has an impact on how students, staff, and employees integrate into the community, and it can have a major or negative impact on their wellbeing. This is acknowledged by the framework for well-being.

It may have an impact on wellbeing. The system places a strong emphasis on well-being because it understands that environments should promote a sense of place and community (Christine Hancock, 2023).

The notion of safety within the constructed surroundings encompasses Overt safety, also known as mental safety or enthusiastic safety, refers to designing environments that encourage coziness, autonomy, conviction, and teamwork. Physical safety, on the other hand, refers to designing rooms with the proper shielding to maintain a strategic distance from potential danger to clients (Orhero, 2020).

The sum of all the elements that contribute to general happiness and well-being is prosperity. Prosperity is a result of both well-being and well-being; Well Buildings and organizations can use V2 and other indicators as tools to think about evidence-based strategies to increase the happiness and

well-being of people.

It is a tool for analyzing research-backed strategies for raising people's happiness and well-being. Wellbeing thoroughly integrates several indices that take into account one's physical, emotional, social, environmental, financial, community, professional, and spiritual well-being. Health and wellness. Health nourishes the body, restrains the mind, and upholds the spirit (Christine Hancock, 2023).

There are multiple levels of human security, the primary level is the concept of regulation and the goals of the arrangements, which center on providing people with the necessities of daily life and shielding them from periodic and sudden disruptions in their lives. The human security offers an opportunity to consider the entire spectrum of human progress, as well as reassessing hazards that have persisted against nature for a long time as well as identifying unused hazards and hazards arising from change. In other words, it offers an opportunity to identify needs, which are old problems in nature that are still ignored, and unused emerging hazards (Siloko, 2024).

The third perspective acknowledges the interdependence of peace, human rights, and progress and considers what factors impact the accomplishment of essential objectives. This helps to guarantee a range of local, national, and international open products by providing incentives for involvement. A human security approach aims to make the building more resilient to climate change and common disasters (United Nations, 2016).

Human security demands solutions that are prevention-focused, context-specific, inclusive, and people-centered in order to fortify security measures and support the development of all individuals and communities;

Recognizing the connections between peace, progress, and human rights, human security also takes into consideration the right to political, economic, social, and cultural rights protection;

Human security is not synonymous with danger or the application of coercive measures; rather, it is a

concept that is apart from the need to provide and its usage. Security for humans is the reason for human safety focuses on a people-centered, context-specific, comprehensive, and prevention-oriented approach to protecting and empowering individuals and communities. It emphasizes the importance of addressing a wide range of human vulnerabilities, including conflicts, poverty, disasters, and health crises, and their interdependencies (Chiappero-Martinetti, 2020).

Maintaining coherence between different interventions is important to avoid negative outcomes while maximizing the benefits of effective actions. Uncertainties and risks vary across regions and communities, and are influenced by complex local, regional, national, and global factors. Human safety addresses specific risks in specific contexts, acknowledges the diverse needs and vulnerabilities of populations, and supports the development of tailored preparations within communities. It also considers the evolving dynamics of family life and their impact on communities. Human safety requires cooperation and partnerships among individuals and stakeholders within a community to effectively address uncertainties and risks, creating the foundation for collaborative efforts that benefit both individuals and the community as a whole (Gasper, 2020).

Early anticipation and mitigation of threats are essential elements of human safety in order to encourage long-term planning and build the capacity to respond to challenges. The concept of human safety focuses on a people-centered, context-specific, comprehensive, and prevention-oriented approach to protecting and empowering individuals and communities. It emphasizes the importance of addressing a wide range of human vulnerabilities, including conflicts, poverty, disasters, and health crises, and their interdependencies.

Uncertainties and risks vary across different localities and communities, therefore addresses specific risks in specific contexts, acknowledges the diverse needs and vulnerabilities of populations, and

supports the development of tailored preparations within the use of the entertainment center. It also considers the evolving dynamics of family life and their impact on communities.

Early anticipation and mitigation of threats are essential elements of human safety in order to encourage long-term planning and build a facility to respond to challenges this must start from the design stage. From the planning underlying causes of emergencies would be prevented, preparing early to reduce the need for costly late interventions, and developing strategies to empower communities to become more resilient (United Nations,, 2016).

Lead City University Ibadan DO NOT COPY

Chapter Three

Methodology

This section discusses the stepwise procedure for the research methods used in the study to achieve the aim, the stated objectives and to arrive at a conclusion. It further explains the details in the study area, sources and instruments of evaluation. Also, various steps that were taken in order to collect data and information that are of high relevance to the study were discussed.

3.1 Research Design

This Study adopts a qualitative method using a case study research design to determine the current state of recreational facility in Nigeria.

3.2 Types and Sources of Data

Both primary and secondary data were used for the study.

3.1.1 Primary Data

The primary data was collected to provide firsthand information on the particular case being studied. In this study, the primary data was sourced through participant observation, architectural inventory, and document analysis to understand the spatial configuration and design parameters provided in the recreational facilities studied.

3.1.2 Secondary Data

Secondary data were also collected for the study and are the second-hand information, such information include the study area, history of the study area, which was obtained from literature,

historic facts and other frontier of knowledge on the subject matter. Other sources include relevant information from published and unpublished literature such as textbooks, journals, seminar paper, magazine, past project, academic thesis, and internet materials among others.

3.3 Case Study Analysis Framework

The framework employed in this study, derived from existing literature on design strategies, focuses on assessing the environmental sustainability of buildings. This framework will be used to evaluate case study 1-4 based on the following key components:

Accessibility: This aspect of the framework examines how well various features makes the building inclusive for many users. It examines how the building integrates with its surroundings, considering factors that allows for easy access and movement within the building. It considers strategies that helps people with impairment make use of building conveniently. The degree of accessibility, usability, and utilization of a facilities within the physical setting, how easy it is for individuals with disabilities languages, ethnicities, genders, ages, and other diverse human beings to use, access, and enjoy them. languages, genders, ages, and cultures in ways that respect their independence and interdependence, dignity, and experiences.

Flexibility and Adaptability: This aspect of the framework examines how well the building can be flexible in its use, considering several factors that could allow for easy modification of the internal parts of the building.

Flexibility in design allows for changes to be made without hindering or damaging any part of the building, the main goal of adaptability is to provide diversity of use in the spaces, adaptability encompasses the ability of units to be flexible and alter over time, as well as the flexibility of use of the building as awhole. Flexible and adaptable buildings are ones that accommodate various uses

determined by the occupants' actions. Buildings can be adapted to serve one or more functions and suit various capacities determined by the tenants' activities.

Sustainability: This aspect of the framework examines how well the building integrates with its surroundings, considering factors such as climate change, effect of the building on its surroundings, it looks at strategies by which the building conserves water, consumes energy, and gaseous emissions. It considers how the facility responds to climate change by making the building to seamlessly adapt to its physical environment.

Human wellbeing, Safety and Security: This aspect of the framework examines how the building contributes positively to the health, safety of its users. It looks at various element within the surroundings and the building interior. considering factors that prevents threats, enhance safety, it considers how some factors were integrated into physical areas of the building therefore influencing emotional, social, environmental, financial, community, professional, and spiritual well-being. It looks at ways in which the facility enhances physical wellness of the body.

Safety focuses on a people-centered, context-specific, comprehensive, and prevention-oriented approach to protecting and empowering individuals and communities. It emphasizes the importance of addressing a wide range of human vulnerabilities, including conflicts, poverty, disasters, and health crises, and their interdependencies

3.3 Case Studies

3.3.1 Case Study One: Ventura Mall, Ibadan, Nigeria

Name: Ventura Mall

Location: Sango, Ibadan

Architect: Tango and Associates

Material Used: Concrete, Steel, Glass

Year of Construction: 2013 – 2014

Floor Area: 380sqm



Figure 2: Ventura Site
Source: Google Maps (2024)

Brief description: Ventura Mall, a cutting-edge shopping destination in Ibadan, offers a diverse range of attractions including a shopping complex, arcade for children, cinema, and food court. Renowned for its relaxing atmosphere and entertainment options, it's a must-visit spot in Ibadan. Whether you're looking to indulge in state-of-the-art gaming, catch the latest movies, or enjoy delicious cuisine, Ventura Mall caters to diverse interests. Additionally, it's an ideal venue for hosting gatherings, spending quality time with loved ones, or treating kids to a fun-filled outing.

3.3.1.1 Accessibility: The site is very accessible, easy vehicular and pedestrian movement within the facility. The use of Lift for vertical movement was also incorporated within the design of the facility.



Figure 3: Ventura Mall
Source: Author's Fieldwork, 2024

3.3.1.2 Flexibility and Adaptability: the interior spaces can be used for varying activities such as retail outlets, offices, exhibition rooms, art gallery. The spaces are very flexible in its design and use.



Figure 4: Ventura Cool Spot
Source: Author's Fieldwork, 2024

3.3.1.3 Sustainability: there exist presence of water fountain integrating the building with nature. The use of flowers so as to serve as greenery helping to purify the air.



Figure 5: Ventura Cenima
Source: Author's Fieldwork, 2024

3.3.1.4 Safety and Security: there is presence of fire extinguishers, the site is properly fenced. The use of rail at the stair hall to prevent children from slipping or sliding down. The flooring is very tactile it prevent sleepage.



Figure 6: Ventura Circulation Area
Source: Author's Fieldwork, 2024

Merit

- i. The site is well planned,
- ii. There is easy movement in and out of the site.
- iii. It has an inviting aura as one pass by
- iv. Its located in the heart of the town
- v. Easy access to residents and students of the tertiary institutions (University of Ibadan and Polytechnic of Ibadan)

Demerit

- i. The site is small
- ii. No adequate setback from the main road
- iii. The car park is no sufficient during peak seasons.

3.3.2 Case Study Two: Silverbird Galleria, Lagos, Nigeria

Name: Silverbird Galleria

Location: 133, Ahmadu Bello Way, Victoria Island, Lagos

Developer: Silverbird Group

Material Used: Concrete, Steel, Glass

Opening Date: 2004

Brief description: Silverbird Galleria features a variety of amenities conveniently situated on different floors. On the ground floor, you'll find a shirt retailer, café, and offices for mobile networks, providing easy communication and internet access. Moving up to the first floor, there are electronics stores and the Rhythm 93.7FM broadcasting studio operated by Silverbird. The second floor offers arcades and food services, while the topmost floor houses the Silverbird Cinema. Additional facilities such as a pharmacy, lounge, and beauty shop are also available. Additionally, there's another Silverbird Galleria located at Ikeja City mall in Lagos, positioned at the top of the escalators on the right.

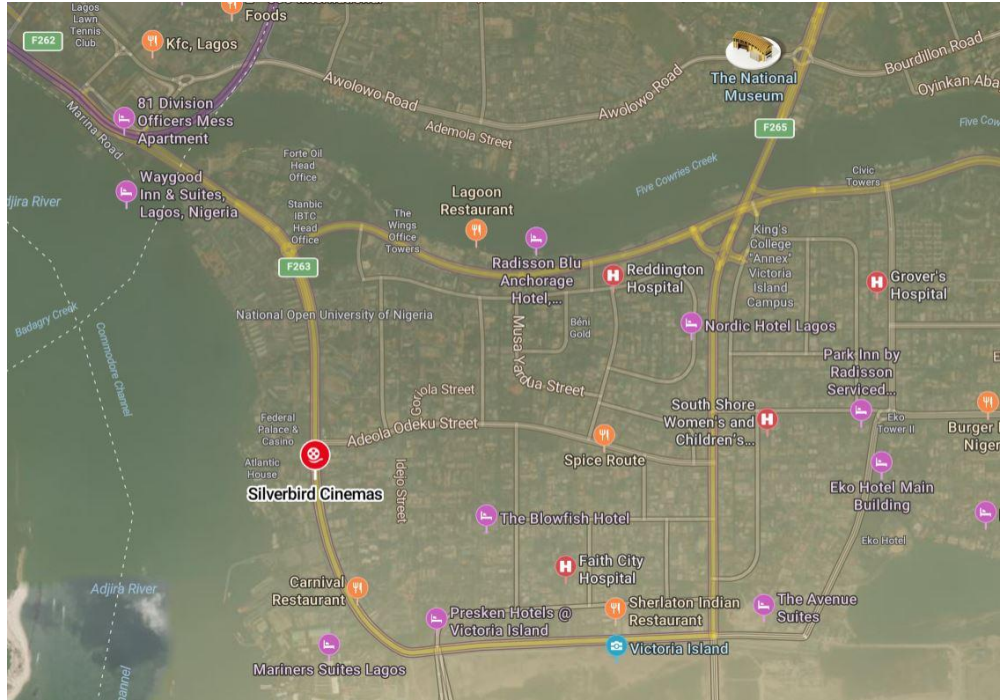


Figure 7: Silverbird Cinema Site
Source: Google Maps (2024)



Plate 8: Silverbird Approach
Source: Author's Fieldwork, 2024

3.3.2.1 Accessibility: Public and private transportation make it simple to get to Silverbird Cinemas, which are situated in well-known districts including Victoria Island and Ikeja. To accommodate those with disabilities, facilities typically have barrier-free seating, elevators, and ramps.



Figure 9: Silverbird Cinema
Source: Author's Fieldwork, 2024

3.3.2.2 Flexibility and Adaptability: the interior spaces can be used for varying activities, In addition to movie screenings, Silverbird Cinemas can accommodate premieres, business get-togethers, and private events. The theaters are built to handle a range of event kinds and crowd sizes. The movie theater is fitted with state-of-the-art digital projection and audio systems to support various multimedia presentations.

3.3.2.3 Sustainability: the use of energy efficient lighting, air cooling system were employed. The use of recycling initiatives to help prevent litres of waste in the facility.



Figure 10: Silverbird Circulation Area
Source: Author's Fieldwork, 2024

3.3.2.4 Safety and Security: Well marked fire entry and exist, fire alarms, fire extinguishers were used within the facility. Cctv were also used to monitor surveillance.

Merit

- i. The site is well planned,
- ii. There is easy movement in and out of the site.
- iii. It has an inviting aura as one pass bye
- iv. Its located in the heart of the town

Demerit

- i. Vehicular and pedestrian crossing path
- ii. Inadequate green space

3.3.3 Case Study Three: Twinwaters, Lagos, Nigeria

Name: Twinwaters

Location: Off Remi Olowude Road, Lekki second roundabout.

Material Used: Aluminum, Glass

Opening Date: 2018

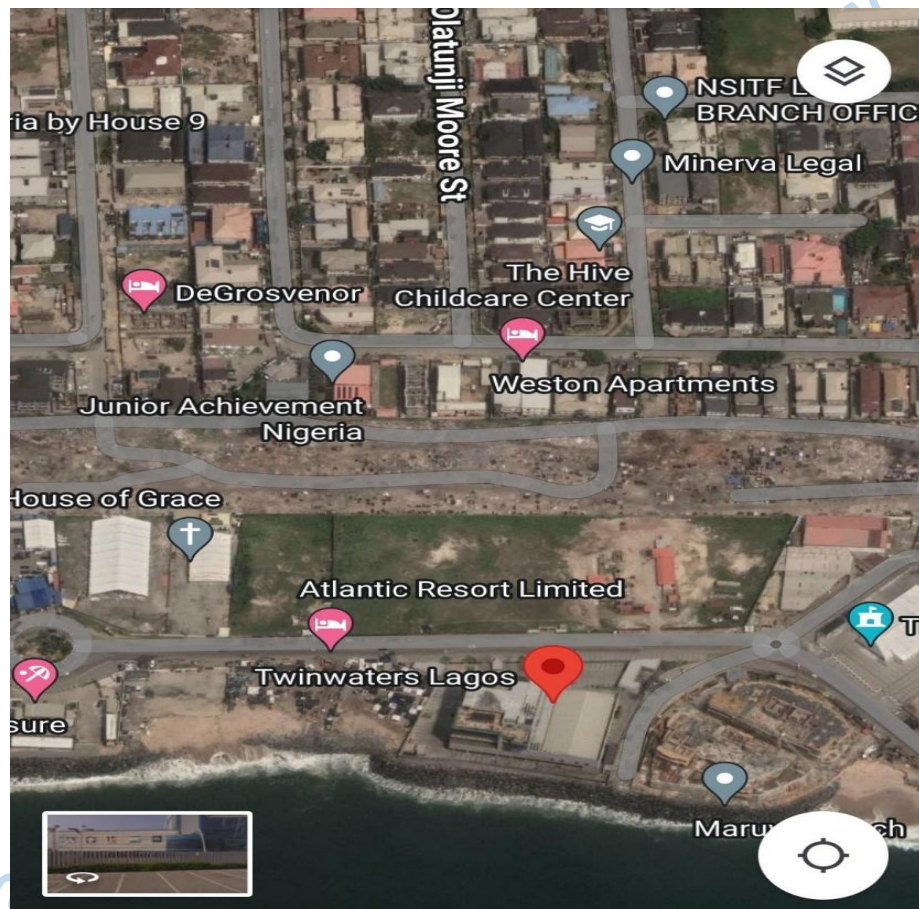


Figure 11: Twinwaters Site
Source: Google Maps (2024)

Brief description: Twinwaters represents a groundbreaking premium entertainment destination in Nigeria, spanning five floors and offering breathtaking views of the Atlantic Ocean. It features two exquisite dining venues—788 On The Sea and Chai Tang—a cinema, Rufus & Bee, the country's

largest and finest gaming arcade, The View, a rooftop bar with stunning ocean views, and The Maradiva, an upscale events hall with five modern event suites. This means families now have the opportunity to enjoy a variety of fun activities all under one roof.

Seize the opportunity to strengthen family bonds at Twinwaters this season—it's a must-visit holiday destination in Nigeria! Dive into a world of arcade games at Rufus & Bee or opt for some bowling excitement. Afterwards, indulge in a sumptuous seafood feast at 788 On the Sea or savor traditional Chinese cuisines at Chai Tang. Extend the fun with a movie at the cinema or unwind in the evening at The View Rooftop with cocktails and appetizers.

With its diverse offerings, Twinwaters ensures everyone's happiness is catered to, creating unforgettable moments for friends and family to share together.

3.3.3.1 Accessibility: The site is very accessible, easy movement within the facility through the use of lifts and ramps. The stair case is very accessible.



Figure 12: Twinwaters Approach
Source: Author's Fieldwork, 2024

3.3.3.2 Flexibility and Adaptability: There is a road that is kept up nicely that leads to Twin Waters. All guests can park in the handicapped spaces, which include ramps and elevators. Every part of the building is easily accessible during an event.



Figure 13: Twinwaters Aerial View
Source: Author's Fieldwork, 2024

3.3.3.3 Sustainability: Twin Waters feature energy-efficient HVAC and lighting systems, not many the use of greenery as a sustainability measures was used. water-saving features like low-flow fixtures was also used in the facility. Effective waste disposal system was observed within the facility. The proximity of the site to a water body makes it possible to use less energy for cooling the internal spaces in the facility. Use of devices like low-flow toilets, faucets, and showers. These fixtures are designed to minimize water consumption without compromising functionality, helping to conserve water resources.



Figure 14: Twinwater Game Arcade
Source: Author's Fieldwork, 2024

3.3.3.4 Safety and Security: availability of fire extinguishers so as to mitigate against a fire hazard, the use of surveillance cameras so as to observe movement within the facility. The building is also zoned with security in mind. The anti-slip flooring so as to give a compact and easy movement within the facility.



Figure 15: Twinwaters water view
Source: Author's Fieldwork, 2024

Merit

- i. The site is well planned,
- ii. There is easy movement in and out of the site.
- iii. Adequate parking space

Demerit

- i. Cost of maintenance is high
- ii. Not well landscaped

3.3.4 Case Study Four: Immersia Virtual Reality, Lagos, Nigeria

Name: Immersia Virtual Reality

Location: Off Remi Olowude Road, Lekki second roundabout.

Material Used: Aluminum, Glass

Opening Date: 2018

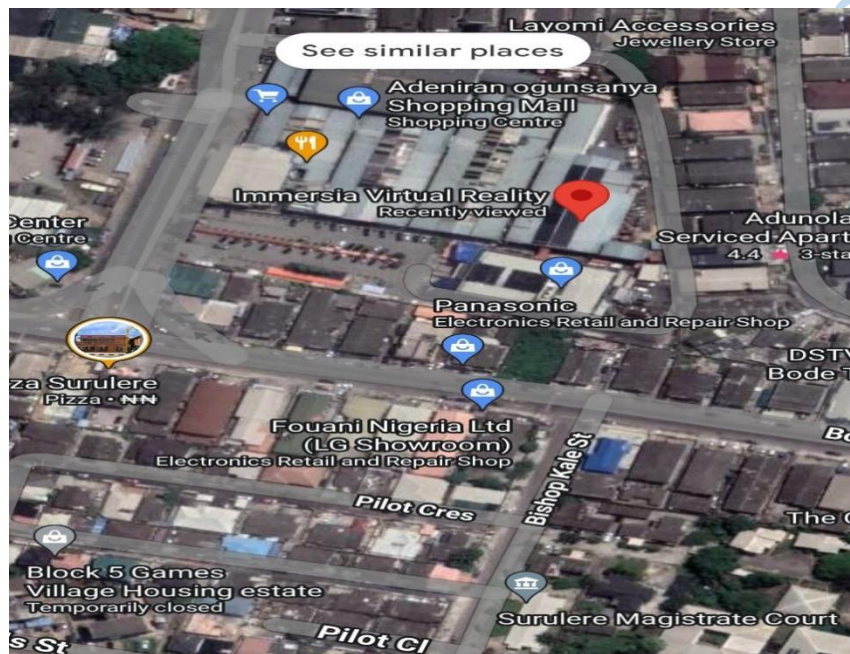


Figure 16: Immersia Virrgtual Reality Site
Source: Google Maps (2024)

Brief description:

In order to increase the authenticity of the virtual world, the architecture and design are focused on producing immersive experiences that can be enjoyed through high-resolution, 360-degree headsets. These amenities offer gamers and thrill-seekers a very engaging setting, making it a well-liked Lagos entertainment destination. An intriguing illustration of how virtual reality (VR) technology is being used into contemporary design and construction is the Immersia Virtual Reality building in Lagos.

3.3.4.1 Accessibility: The site is located in a vicinity that is very accessible for vehicular and pedestrian movement into and out of the facility. The use of Lift and escalator to ease vertical movement within the building facility



Figure 17: Immersia Virtual Reality 3D Game Arcade
Source: Google Maps (2024)

3.3.4.2 Flexibility and Adaptability: the interior spaces can be used for varying activities it can be reconfigured and rearranged to suite specific needs. The building was constructed with modular means.



Figure 18: Immersia Virtual Reality TV Game Arcade
Source: Google Maps (2024)

3.3.4.3 Sustainability: the use of energy efficient lighting system so as to minimize the use of energy for lighting. The focus on digital experience limits the need for physical materials which may have a positive impact on the environmental experience.



Figure 19: Immersia Virtual Reality 3D Game Arcade
Source: Google Maps (2024)

3.3.4.4 Safety and Security: there is presence of fire extinguishers, the site is properly fenced. The use of rail at the stair hall to prevent children from slipping or sliding down. Safety measures are put in place so as to ensure a safe environment for all users. The use of CCTV, secure entry points ensure the facility is safe.

Merit

- i. The site is well planned,

- ii. There is easy movement in and out of the site.
- iii. Adequate parking space

Demerit

- i. Cost of maintenance is high
- ii. Not well landscaped

3.4 Deductions from Case studies

From my case studies I observed the following:

Efficient use of space

Good site planning

Ample car park for vehicular movement and coordination.

The use of ramps and lift to help movement of people with disabilities.

Lead City University Jeddah DO NOT COPY

Chapter Four

Site Analysis and Design Synthesis

4.1 Brief Analysis

4.1.1 Design Brief

There is need for an entertainment center in Lagos that is inclusive allowing diverse users to easily access such facility and make use of them. This would be a positive gear towards creating a notable recreation center that address humans need. The design was approached with sustainability in mind.

The design considerations are:

Inclusiveness

The facility incorporates design to allow people of all age groups and people with disabilities to make use of without marginalizing anyone from the usage of the facility. Inclusiveness helps to meet the need of the community; it gives everyone a fair share to participate in recreational activities.

Aesthetics

The facility incorporates design that gives a good interior experience, architectural elements that are not just visually pleasing but one that is practical for everybody to use. The interiors colour, texture is selected to cater for the need of people across all age group. Design element that reflects and celebrate cultural diversity in the community, the use of biophilic materials is also considered so as to promote the well being of its users. Simplicity and clarity so as to ensure easy navigation also visible signage and way finders are used to ease circulation within the facility.

Accessibility

Barrier free access for everybody who will make use of the building, this is to ensure easy movement in and out of the facility, use of ramps, hand rails as guide to all who make use of the building.

4.1.2 Brief Development

From my case studies I observed that some spaces were common, these spaces were studied so as to determine the spatial requirements, the number of units needed per person, the capacity and the function it will perform in the proposed design. The spaces are:

Outdoor parking

Convenience

Lobby

Arcade

Security post

Shops/ Retail outlets

Circulation Area

Restaurant

Indoor sitting area

Brief Development



Figure 20: Brief Analysis.
Source: Student Field work (2024)

4.2 Study Area

4.2.1 Site Selection

The site is situated in Lagos. Lagos is a prominent city in southern Nigeria and Africa. One of the most populous cities in Africa and it hold the highest population of people in Nigeria. Lagos is a “MEGACITY” it has a population of over 10 million people. It has a good business and economic landscape; it is the home of many industries and companies.

Lagos is a home form cultural diversity. It is geographically located bordering the Atlantic Ocean an excellent trade route for shipping in goods. Airport and railway connections are other means of transportation available in the cityscape connecting other state in Nigeria.

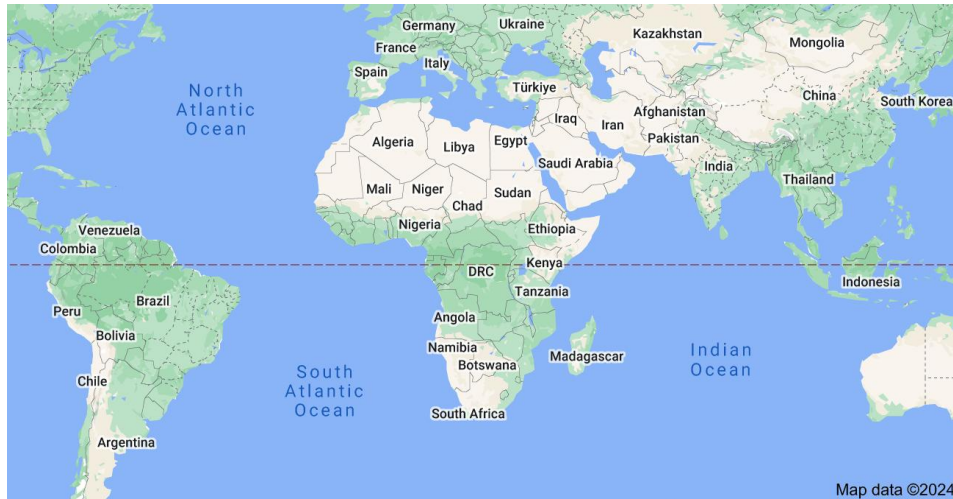


Figure 21: Map of Africa.
Source: Google Maps (2024)

The geography of Lagos is determined its systems of water bodies, the island is connected to the mainland by bridges.

Site Location/Description

The proposed site Location is in Ajah Lagos, this location has a strong cultural advantage and it is a good fit for entertainment and leisure.

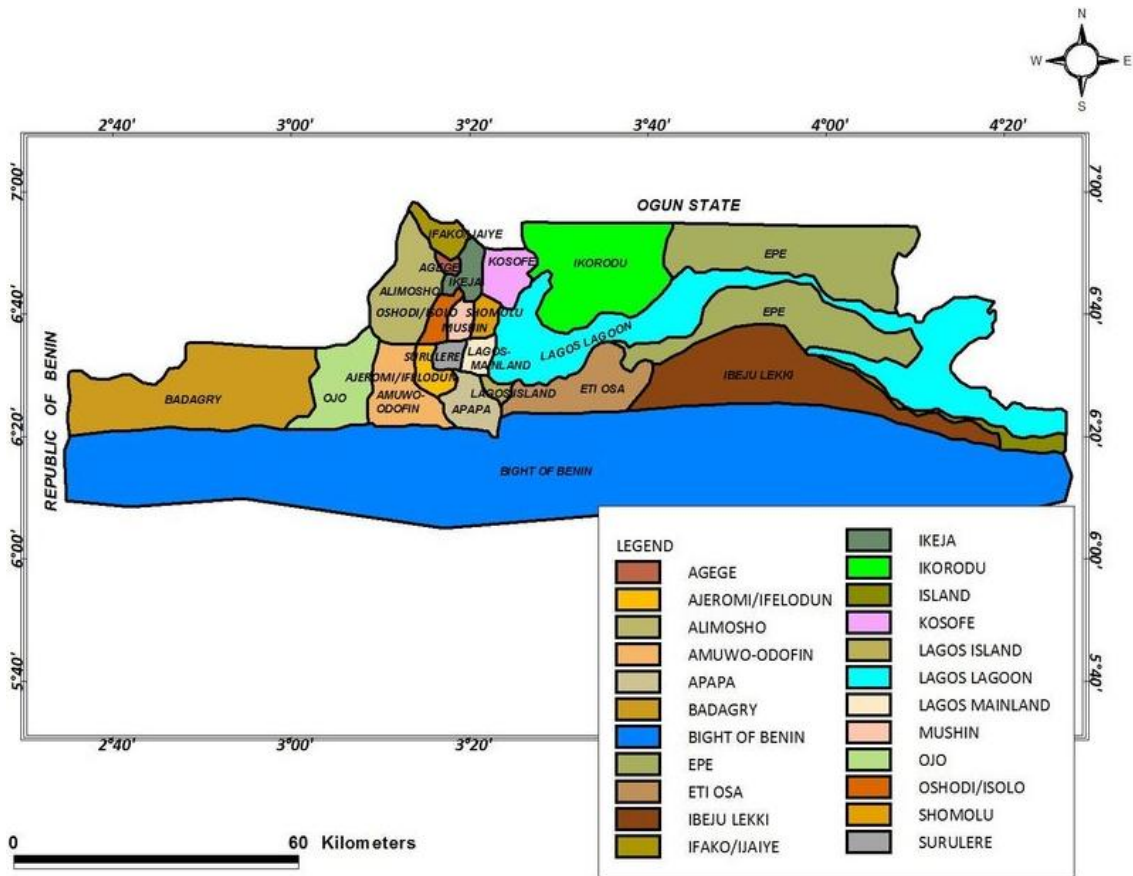


Figure 22 : Map of Lagos.
Source: Google Maps (2024)

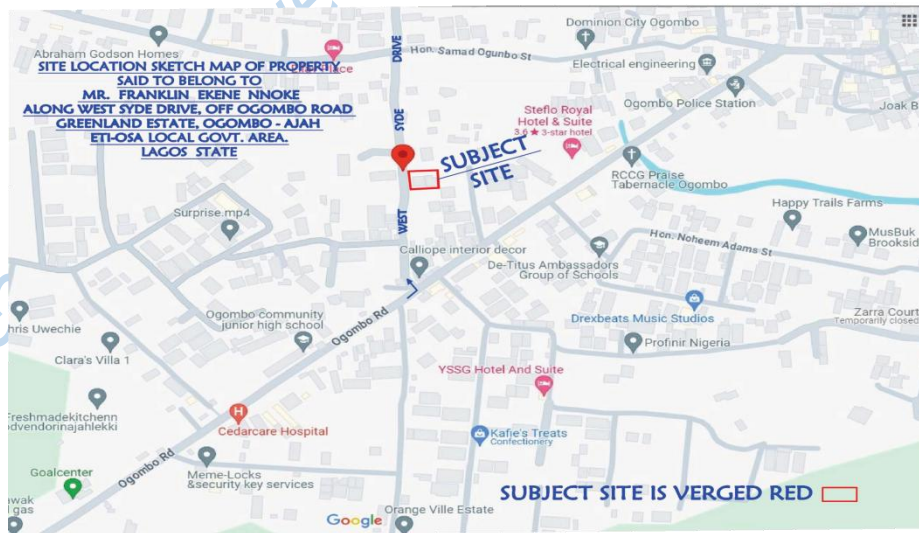


Figure 23: Map of Site.
Source: Google Maps (2024)

The site is located at Ajah, along west side drive, ogombo road, Ajah.

4.2.2 Site Selection Criteria

The site selection of the project is very important because it influences a lot of things about the site.

The site was chosen so as to allow community integration, the site is serene and it is in close proximity to the road. the site is very accessible, the land can accommodate the project and the external works, the climate condition of the area is well suited for the proposed design.

The location of the site is a big contribution to the design, the site is zoned to accommodate the building typology.

4.2.2.1 Economic Focal Point

- Lagos, is Nigeria's largest city, among cities in Africa, it ranks high with population density
- Lagos contributes approximately 10% to the country's leisure earnings.
- Lagos being a Central Business District serves as the primary center for commercial and financial activities, home to headquarters of major corporations, numerous banks and other financial institutions, and in the country.

4.2.2.2 Land Use

Strict compliance with the land use, any design must conform to the desired standards and the stipulated codes and guidelines of the state.

4.2.2.3 Accessibility

The land is very accessible for vehicular and pedestrian movements. It incorporates design that would help users with disabilities easy entry and used of the facility.

4.2.2.4 Services

Existing services like electricity, telecommunication networks are present on the site. Water reticulation system will be provided on the site so as to facilitate the use of water for various purposes. Drainage is available on the street but the facility would put in place means of effective drainage so that water can be properly channeled off during rainfall.

4.2.2.5 Topography

The topography of the site is a relatively gentle, this is good because it would enhance the design of the outdoor functions and landscape. Therefore, reducing the cost of constructing other outdoor facility.

4.2.3 Site Analysis

The site analysis was carried out so as to be able to examine the site physical features and characteristics therefore proper documentation was carried out for the purpose effective design and so as to maximize the full potentials of the site.

SITE ANALYSIS

CLIMATE : It is located in the tropics and therefore has the following climatic properties: high rainfall, relative humidity, long rainy season, intense sunshine.

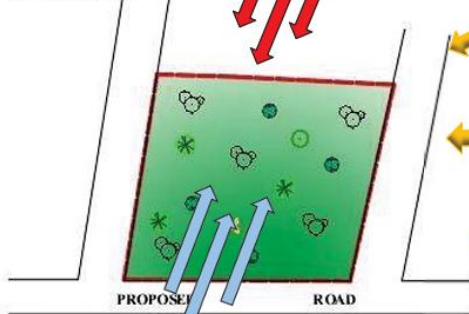


TOPOGRAPHY: The site has a relatively gentle slope and drains into the ground naturally. At the point of joint runoff, a drainage or gutter is provided for draining the water.

ACCESS: The site is bounded by a major road which is on the West.

NORTH-EAST TRADE WIND

This brings about dry dusty winds from the Sahara Desert. It also brings hot and harsh winds.



SOUTH-WEST TRADE WIND

This brings about cool and humid winds from the Atlantic Ocean which courses heavy rainfall.

SUNRISE

The sun assumes the position of the east when it rises in the morning and is not intense.

MID-DAY

Sun-Earth relationship at noon makes the sun assume an overhead position and the intensity is at its highest.

SUNSET

At sunset, the sun assumes a position of the west and is not too intense.

Plate 24: Site Analysis.

Source: Student Field work (2024)

Vegetation

Lagos is located in the tropics enjoys two predominant seasons which are the wet and dry seasons, enabling a wide range of vegetation to sprout. This vegetation ranges from thick undergrowth, short grasses to evergreen trees. The immediate site vicinity has little vegetation that will be cleared off.

Soil Condition

The characteristic of the soil is important for the good construction and landscaping. The site has a Loose Sandy soil with good sub-surface condition this is fit for construction and landscaping. No rock is noticed. The soil will be subject to a soil test so as to know if it meet the construction requirement so the soil can provide good support for the foundation.

Wind Direction

The north-east trade wind is dry and dusty, it brings harmattan to the site and cause dryness and discomfort. The south west trade wind brings cold humidity which gives comforting effect to the people. Proper ventilation is considered so as to harness the prevailing wind direction therefore bringing about effective building arrangement. The building is oriented and positioned such that it receives the maximum supply of air.

Sunlight and Temperature

Lagos is a city that receives abundance of light all year round. Solar gains are important in providing electricity so as to run the entertainment center.

4.3 Project Analysis/ Design Synthesis

There is growing demand for a public recreational facility to be inclusive meeting the needs of community, the design must be financially viable, and it must integrate well with the environment.

4.3 Conceptual Development

The conceptual development for the Recreational Facility prioritizes inclusiveness. The primary objective of this study is to understand the requirements for inclusiveness and adopt it in the proposed design. To achieve this careful planning and thorough integration of the design strategies was incorporated at the design stage.

At the planning stage the building concept was approached with a focus to ensure easy accessibility and usage of the building by everyone, people with disabilities can move in and out freely. A thorough

analysis was done to prevent traffic in the circulation flow, improve the interior ambience so that the interior space can be welcoming for everyone. Energy efficient lighting features were also used. The building façade was done with biomimicry in mind so that it can incorporate well with the surrounding environment and the ecosystem at large.



Figure 25: Site Plan.
Source: Student Field work (2024)

Building Concept

The concept of the building is a biophilic concept that mimic the shape of biological life. The design is configured to allow efficient use of the space and a good spatial flow.

4.3.1 Functional Relationship

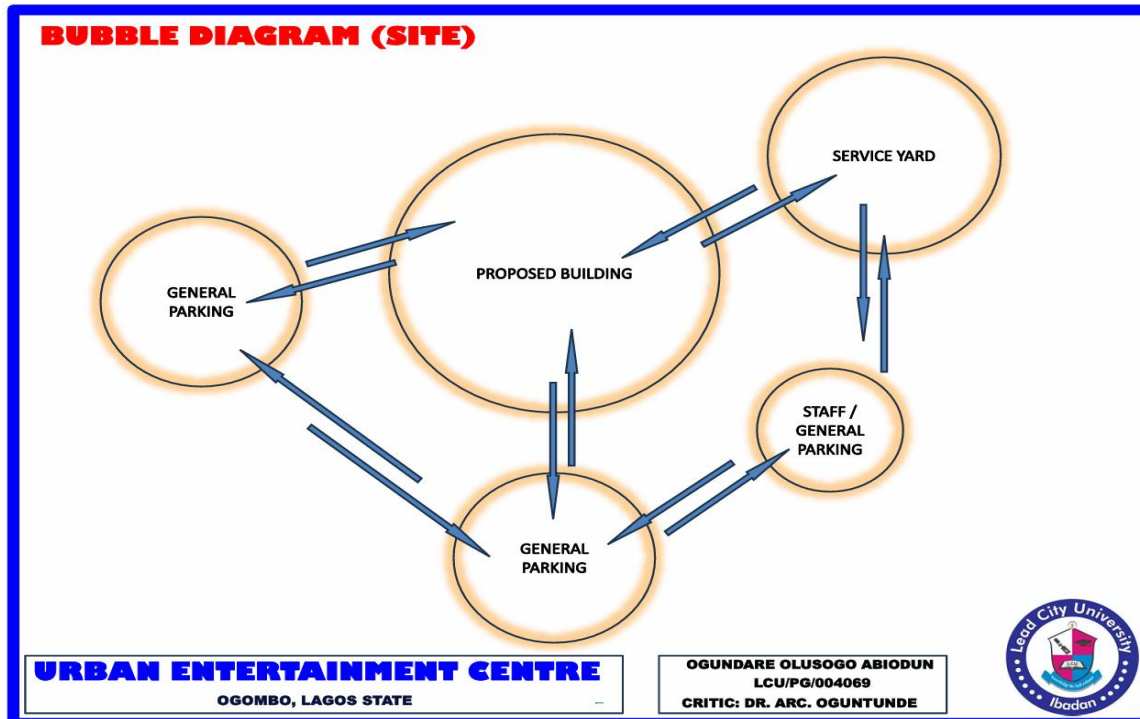


Figure 26: Bubble Diagram / Functional Relationship.
Source: Student Field work (2024)

This shows the degree of relationship among various spaces in the facility. It helps the designer to locate related spaces close to each other, it helps to properly zone spaces for the sake of the functionality of the design. The functional requirements allows the building to be properly zoned, orderly planned and well oriented.

4.3.2 Construction Methods and Materials

The chosen construction method for the civil work will be the framing system. All components that needs to be prefabricated on-site and offsite would be done accordingly and installed at the desired position. Considering the nature of the site, a soil test would be conducted so that appropriate foundation would be constructed to support the weight of the building. The external work would be meticulously done so as to allow easy movement of people with disabilities, trees would be planted to

promote the health of its users. The major construction materials would be concrete, glass and steel. The choice of construction materials influences the aesthetics, durability and the indoor temperature.

4.3.3 Building Services

4.3.1.1 Water Supply

Provisions would be made for water reticulation system on the site so that water will be available at the conveniences and also for firefighting purposes. Overhead water tanks would come in handy for storage purposes. The duct will be wide enough so as to be accessible from each floor for easy maintenance.

4.3.1.2 Power Supply

Power would be supplied by Lagos State Electricity Distribution Company's grid. The design would also make provision for solar panels so as to meet its own power needs. Transformer would be installed on site so as to meet with the electrical demand.

4.3.1.3 Refuse Disposal

Provisions would be made for refuse to be collected at each floors using the core service areas, the waste will be stored at the back of the facility so that waste disposal agency can pick them up for disposal.

4.3.1.4 Waste Water and Sewage Disposal

Waste water from the closets should be drained through the central sewer line to the sewage treatment plant for treatment and proper disposal.

4.3.1.5 Firefighting System

The use of Fire hydrants for easy water collection by the fire fighters, and fire extinguisher should be strategically located on the corridors, smoke detectors and water sprinklers should be provided in each space and corridors.

Lead City University Ibadan DO NOT COPY

Chapter Five

Conclusion and Recommendation.

5.1 Project Appraisal

The focus of the study was to design a facility that is inclusive for all, to achieve these various strategies were integrated during the design stage. These strategies include accessibility, flexibility, inclusion of people with disabilities. Incorporating easy circulation so that all users can move freely unhindered.

Natural lighting was used so as to allow visibility within the space.

Wide and properly defined circulation so as to facilitate a smooth and seamless movement within the facility.

Some greens were used so as to help create a cool and ambient feel within the facility.

5.2 Conclusion

In today's world, understanding humans' diversity is the very foundation of inclusive design.

Architecture therefore places a pivotal role in ensuring inclusiveness in its approach of designing buildings. Inclusiveness embraces all users from various facet of life, cultural diversity and psychological structure therefore coming up with interactive spaces that are very accessible and allows for community gatherings and engagements. Different element that would connect people from adapting to the divers needs of various individuals while promoting human values, maintaining functional integrity and good aesthetic appeal.

By incorporating these design strategies from the planning to the construction phases, recreation centers would recognize the universality of man, bridge human differences therefore providing comfortable fair space where all can relate and interact.

5.2 Recommendation.

- i. **Promoting User sensitive design:** the recreational center must promote design that is sensitive to various users, the young, the elderly and users with disabilities.
- ii. **Use of assistive technology:** the design must promote the use of assistive technology so as to enhance usage by the disabled.
- iii. **Use of Interactive features:** the use of digital features this is so as to enhance user experience.
- iv. **Use of Flexible Modular components:** the use of flexible modular component is important so that they can be adapted for various activities.

Lead City University Ibadan DO NOT COPY

References.

- Afolabi, S. A., Babalola, O., & Olaniyan, O. M. (2022). *Maintenance Culture in Selected Public Buildings within Ibadan Metropolis*. 2(3), 58–69.
- Alahudin, M., Solekha, & Simorangkir, Y. V. (2020). Analysis Anthropometry Comfort of Table and Chairs in the Elementary School Class. *Journal of Physics*, 1–9. <https://doi.org/10.1088/1742-6596/1899/1/012151>
- Azeez, T., Adeleye, O. A., & Olayiwola, L. (2016). Spatial variation in residents ' accessibility to land for housing development in Ibadan metropolis , Oyo state , Nigeria. *Ethiopian Journal of Environmental Studies & Management*, 9(2), 1047–1058. <https://doi.org/10.4314/ejesm.v9i2.10S>
- Balderrama, A., Kang, J., Prieto, A., Luna-navarro, A., Arzmann, D., & Knaack, U. (2022). Effects of Façades on Urban Acoustic Environment and Soundscape : A Systematic Review. *Sustainability*, 1–19.
- Busciantella-Ricci, D. (2023). Changing perspective on social inclusion and design : exploring the concept of designing for inclusive attitudes. *International Association of Societies of Design Research Congress: Life Changing Design*, 1–22. <https://doi.org/doi.org/10.21606/iasdr.2023.527>
- CDC Group. (2020). *Guidance on managing a remote workforce during the COVID-19 pandemic*. <https://www.cdcgroup.com/wp-content/uploads/2020/05/CDC-Group-Working-from-home-guidance.pdf>
- Farghali, M., Osman, A. I., Mohamed, I. M. A., Chen, Z., Chen, L., Ihara, I., Yap, P. S., & Rooney, D. W. (2023). Strategies to save energy in the context of the energy crisis: a review. In *Environmental Chemistry Letters* (Vol. 21, Issue 4). Springer International Publishing. <https://doi.org/10.1007/s10311-023-01591-5>
- Fidelis, O. P., Ogunlade, B., & Adalakin, S. A. (2020). Incidence of School Furniture Mismatch and Health Implications in Primary Incidence of School Furniture Mismatch and Health Implications in Primary School Children in. *Journal of Occupational Therapy, Schools, & Early Intervention*, 00(00), 1–13. <https://doi.org/10.1080/19411243.2020.1787292>
- Greco, A. (2020). Social sustainability: from accessibility to inclusive design. *EGE - Revista de Expresión Gráfica En La Edificación*, 12(July), 18–27.
- Heitor, T. (2005). Potential, Problems And Challenges In Defining International Design Principles For Schools. *Evaluating Quality in Educational Facilities*, 44–54.
- Hsieh, K., Cooper, Y., & Lu, L. (2022). Arts & Culture. In *International Society for Education through Art (InSEA)*.
- Ignos. (2022). Chapter 6: TOURISM SYSTEM: COMPONENTS, ELEMENTS AND MODELS. In *Concept and Impacts of Tourism* (pp. 81–96).
- Jeannotte, M. S. (2021). Social Sciences & Humanities Open When the gigs are gone : Valuing arts , culture and media in the COVID-19 pandemic. *Social Sciences & Humanities Open*, 3(1), 100097. <https://doi.org/10.1016/j.ssaho.2020.100097>

- Kahraman, E. (2020). *Inclusive Design Thinking*.
- Kille-speckter, L., & Nickpour, F. (2022). The Evolution of Inclusive Design ; A First Timeline Review of Narratives and Milestones of Design for Disability. *DRS, May*, 1–27. <https://doi.org/10.21606/drs.2022.690>
- Kolawaole, E., & Okonkwo, W. I. (2022). Impacts of Climate Change on Environment and the Remedies. *International Journal of Weather, Climate Change and Conservation Research*, 8(2), 1–9.
- Konold, T., Cornell, D., Jia, Y., & Malone, M. (2018). School Climate, Student Engagement, and Academic Achievement: A Latent Variable, Multilevel Multi-Informant Examination. *AERA Open*, 4(4), 233285841881566. <https://doi.org/10.1177/2332858418815661>
- Kordić, L. (2020). *Tourism Infrastructure , Recreational Facilities And Tourism Development TOURISM INFRASTRUCTURE , RECREATIONAL FACILITIES AND TOURISM DEVELOPMENT Željko Mrnjavac. June 2018*. <https://doi.org/10.20867/thm.24.1.12>
- Laforteza, R., Davies, C., Sanesi, G., & Konijnendijk, C. C. (2013). Green infrastructure as a tool to support spatial planning in European urban regions. *IForest*, 6(1), 102–108. <https://doi.org/10.3832/ifor0723-006>
- Lamirande, M. (2022). Aspects of Designing Inclusively from Practitioner Perspectives. *Architecture*, 2, 497–517. <https://doi.org/https://doi.org/10.3390/architecture2030028>
- Lekies, K. S., Yost, G., & Rode, J. (2015). Urban youth ’ s experiences of nature: Implications for outdoor adventure recreation. *Journal of Outdoor Recreation and Tourism*, 9, 1–10.
- Mason, P. (2003a). Tourism impacts, planning and management: Third edition. *Tourism Impacts, Planning and Management, Third Edit*, 1–253. <https://doi.org/10.4324/9781315781068>
- Mason, P. (2003b). *Tourism Impacts , Planning and Management. Elsevier*, 1–208.
- Mehrotra, S., Zusman, E., Bajpai, J. N., Fedirko, L., Jacob, K., Replogle, M., Woundy, M., & Yoon, S. (2018). Chapter 13: Urban Transportation. In *Climate Change and Cities* (pp. 491–518).
- Nittala, S., Sheppard, S., & Chen, H. L. (2024). Inclusive Course Design Checklist: A Living Document for Faculty to Create Inclusive Classrooms. *2023 Annual Conference % Exposition*, 1–22. <https://doi.org/10.18260/1-2--43622>
- OECD. (2018). *The Value of Culture and the Creative Industries in Local Development*.
- Okoye, P. U., Ngwu, C., Okolie, K. C., & Ohaedeghasi, C. I. (2020). Severity of Impact of Music Acoustics on Sustainability Performance of Buildings in Anambra State Nigeria. *Energy and Environmental Engineering*, 7(2), 13–26. <https://doi.org/10.13189/eee.2020.070201>
- Oladinrin, T., Ogunsemi, D., & Aje, I. (2012). Role of Construction Sector in Economic Growth: Empirical Evidence from Nigeria. *FUTY Journal of the Environment*, 7(1), 50–60. <https://doi.org/10.4314/fje.v7i1.4>
- Owamoyo, L., & Tabibi, B. (2023). The Impact of Globalisation on Traditional Architecture in

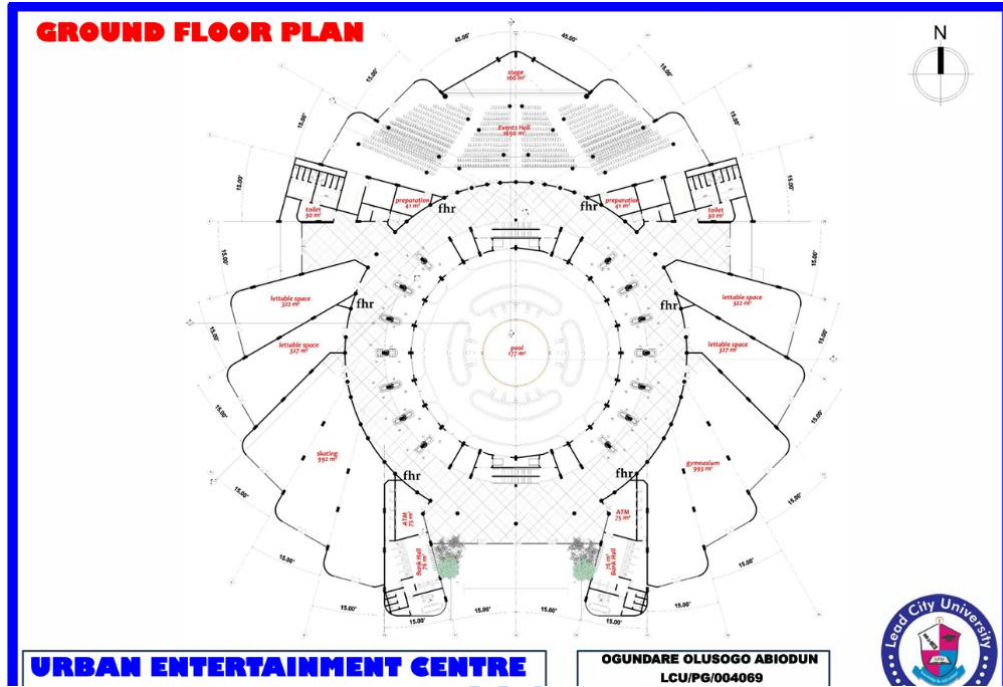
- Nigeria : A Case Study of Lagos Island. *Advances in Applied Sociology*, 13, 636–650.
<https://doi.org/10.4236/aasoci.2023.139040>
- Peters, T. (2012). Socially Inclusive Design in Denmark: The Maturing Landscape. *JJW Arkitekter*, November, 45–53. <https://doi.org/10.1002/ad.1727>
- Ramyar, M., & Halim, N. (2020). Tourist Expectation and Satisfaction towards Existing Infrastructure and Facilities in Golestan National Park, Iran. *American Research Journal of Humanities & Social Science (ARJHSS)*, 3(July), 89–108.
- Rao, P. (2020). Chapter 1: Role of Green Spaces for Maintaining Well-Being in Residential Community Development. In *Improving Quality of Life - Exploring Standard of Living, Wellbeing, and Community Development* • (pp. 1–20).
- Raymond, C. M., Frantzeskaki, N., Kabisch, N., Berry, P., Breil, M., Nita, M. R., Geneletti, D., & Calfapietra, C. (2017). A framework for assessing and implementing the co-benefits of nature-based solutions in urban areas. *Environmental Science and Policy*, 77(June), 15–24.
<https://doi.org/10.1016/j.envsci.2017.07.008>
- Sánchez-Cabrero, R., Sandoval-Mena, M., Saez-Suanes, G. P., & Prado, E. L.-A. (2024). Design and validation of the classroom climate for an inclusive education questionnaire (CCIEQ). *Environment and Social Psychology*, 9(5), 1–18. <https://doi.org/10.54517/esp.v9i5.1754>
- Sawyer, T. H. (2020). *Facility Planning and Design for Health , Physical Activity , Recreation , and Sport*.
- Schneider, W. (2022). *Cultural Policy for Arts Education: African-European Practices and Perspectives*. [https://doi.org/DOI 10.3726/b19006](https://doi.org/DOI%2010.3726/b19006)
- Sida. (2023). Urban transport. *URBAN ISSUE PAPER*.
- Supervisor, J. I., & Abbasian, S. (2019). *Lack of basic services in the tourism industry : A study of stakeholders ' perspectives in Bamenda , Cameroons . Student : Jenling Immanuel. 2018*.
- Tantawy, D.-E., & Khamis, N. E. (2021). Cultural Buildings ' Design between Visual Creativity and Psychological Impact : An approach for activating the concept of uncanny architecture in expressing national issues Research problem : Research Aims : Research Significance : Research Methodology : *Journal of Architecture Arts and Humanistic Science*, 6(26), 79–101.
<https://doi.org/10.21608/MJAF.2020.23673.1506>
- UN. (2018). *Identifying social inclusion and exclusion* (pp. 17–32).
- Utrilla-Cobos, Alicia, S., Uribe-Victoria, R., Rubio-Toledo, Angel, M., & Santamaría-Ortega, A. (2014). Inclusive Design Applied in Open Public Spaces for the Promotion of Cultural Exchanges. *The Asian Conference on Sustainability, Energy and the Environment, February 2015*, 198–208.
- Wharton, J. (2020). *Understanding Inclusion This guide is for SENCOs , school leaders. June*.
- White, E. T. (n.d.). *SITE ANALYSIS*.
- Zhu, H., Bont, C. De, & Dong, H. (2022). Exploring the Roles of Inclusive Design in Fulfilling

Corporate Social Responsibility : A Multi-case Study of Three Large-size mHealth Corporations.
Design Research Society (DRS), April.

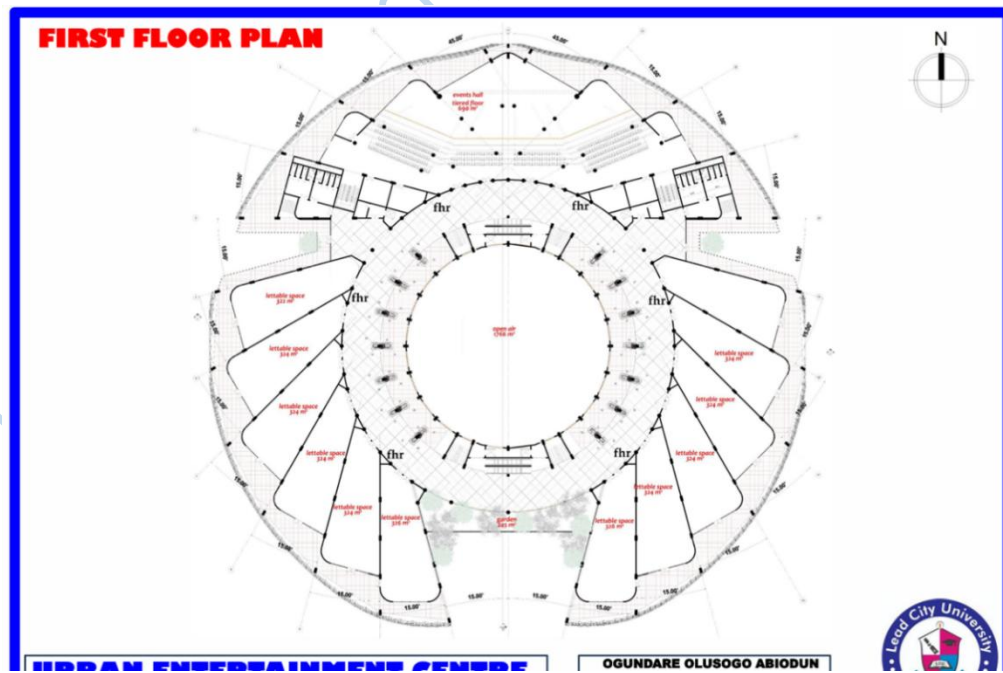
Zhu, H., Gruber, T., & Dong, H. (2020). Value and Values in Inclusive Design. *HCI 2020, LNCS 12207*, 1–14. <https://doi.org/10.1007/978-3-030-50252-2>

Lead City University Ibadan DO NOT COPY

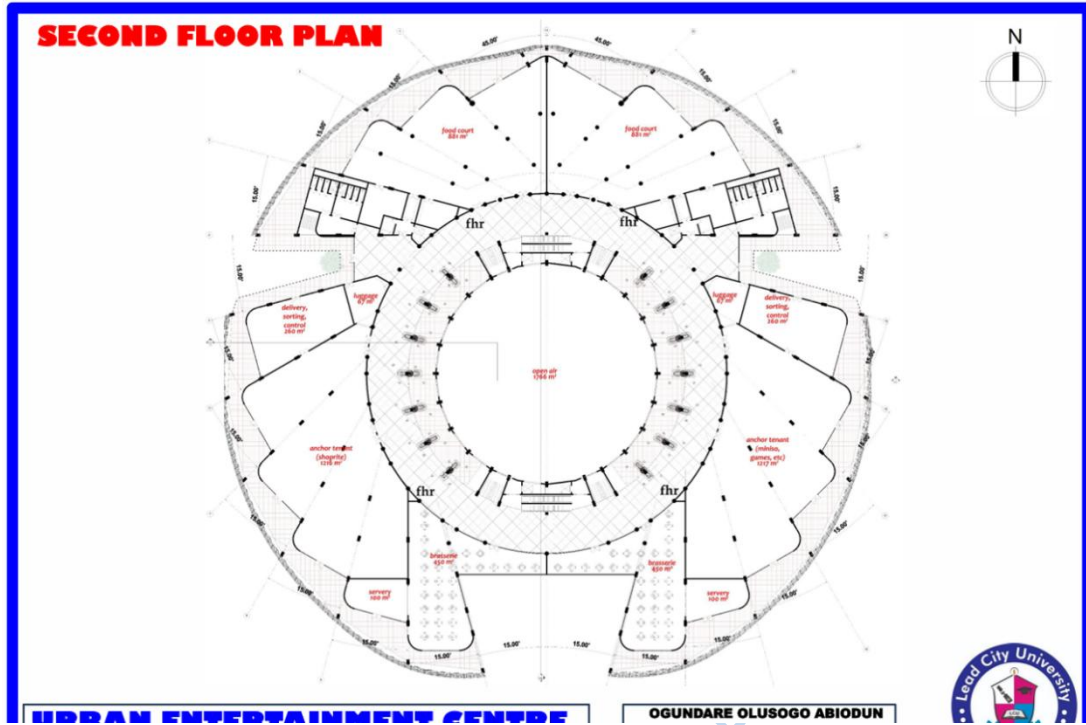
Appendix.



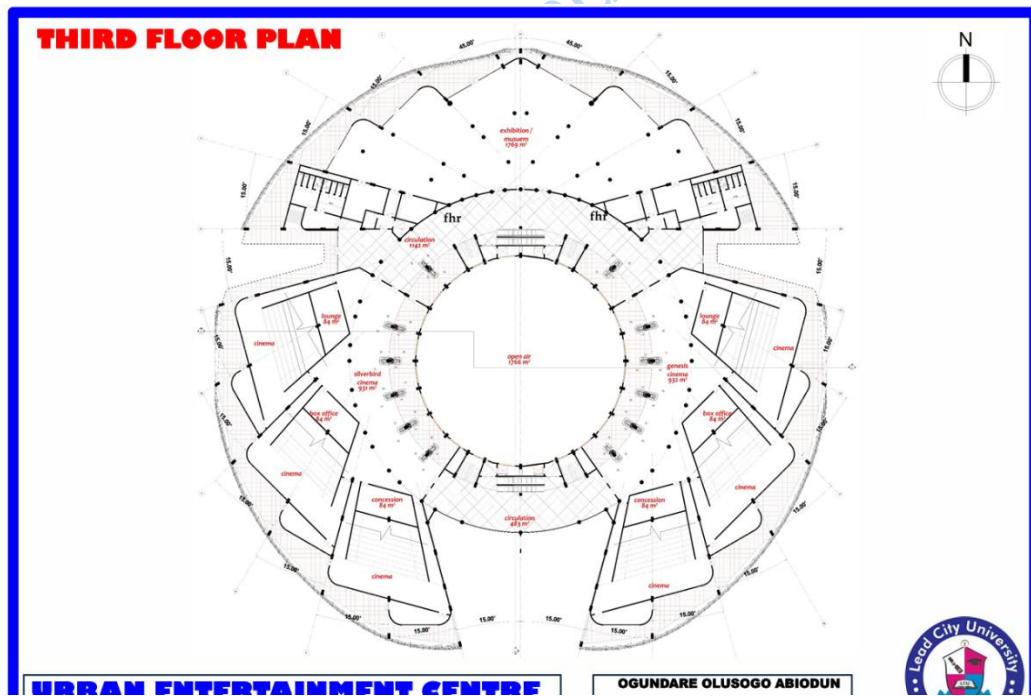
Appendix 1



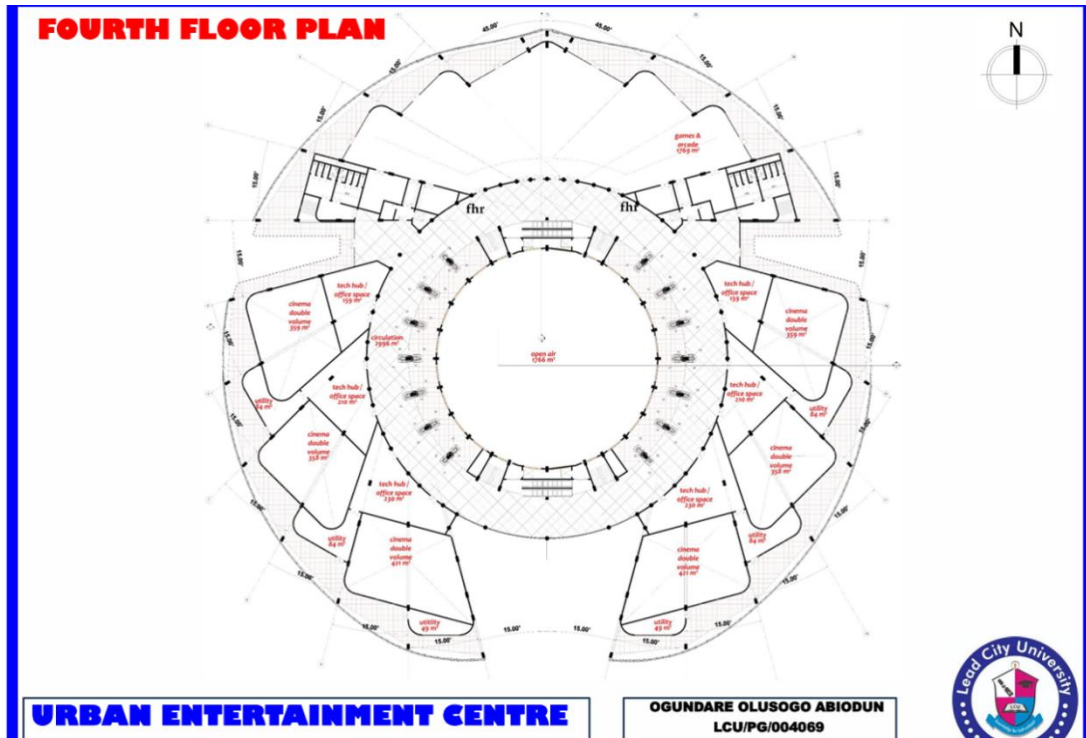
Appendix 2.



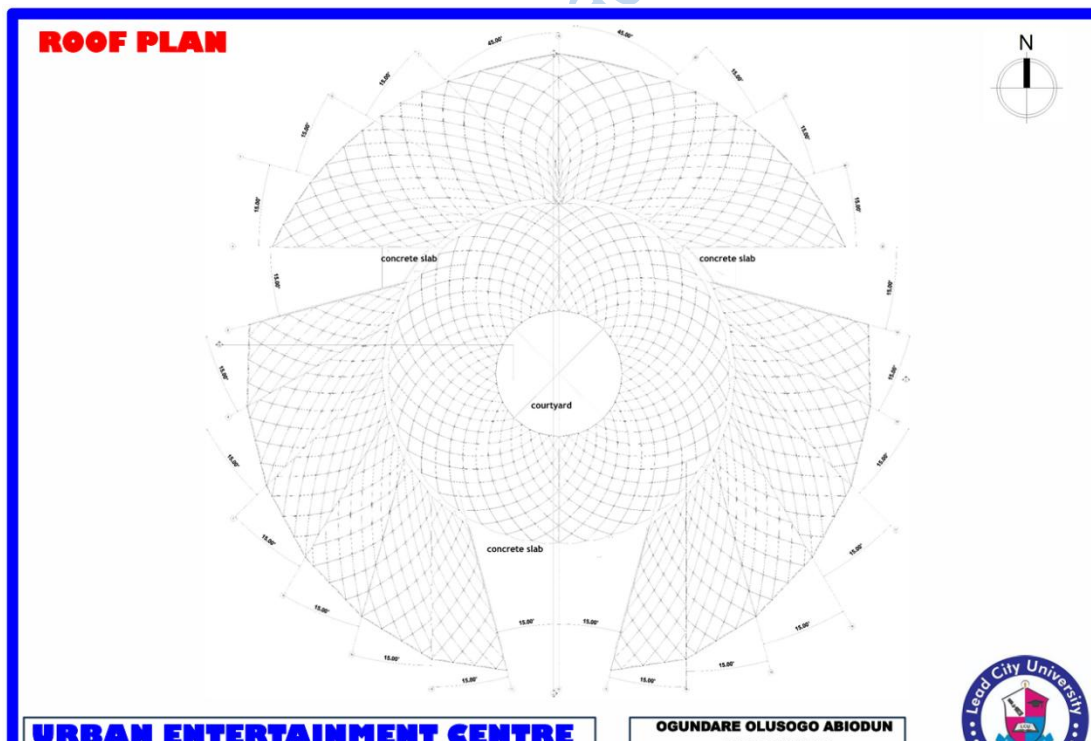
Appendix 3.



Appendix 4.

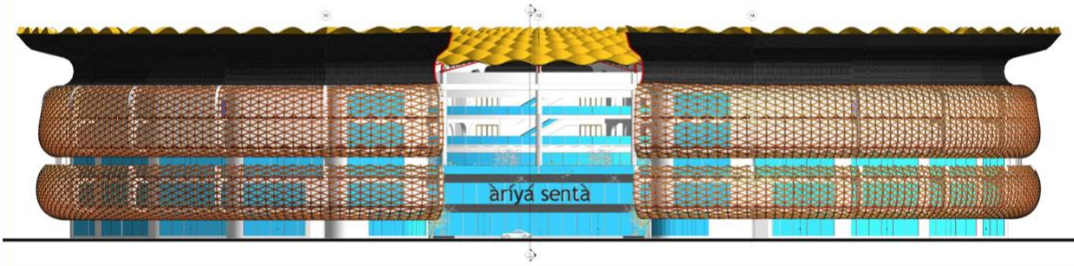


Appendix 5.



Appendix 6.

APPROACH ELEVATION



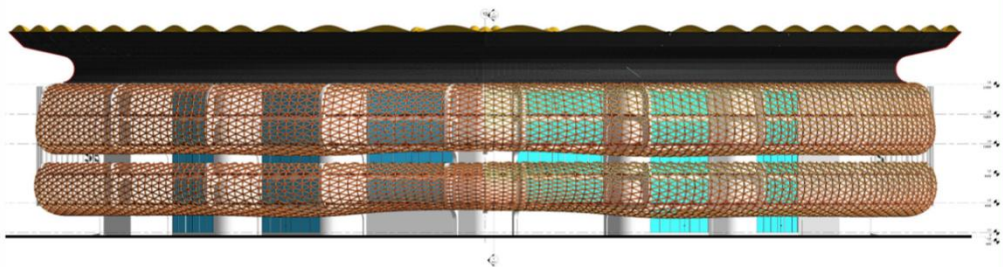
URBAN ENTERTAINMENT CENTRE

OGUNDARE OLUSOGO ABIODUN
LCU/PG/004069



Appendix 9.

REAR ELEVATION



URBAN ENTERTAINMENT CENTRE

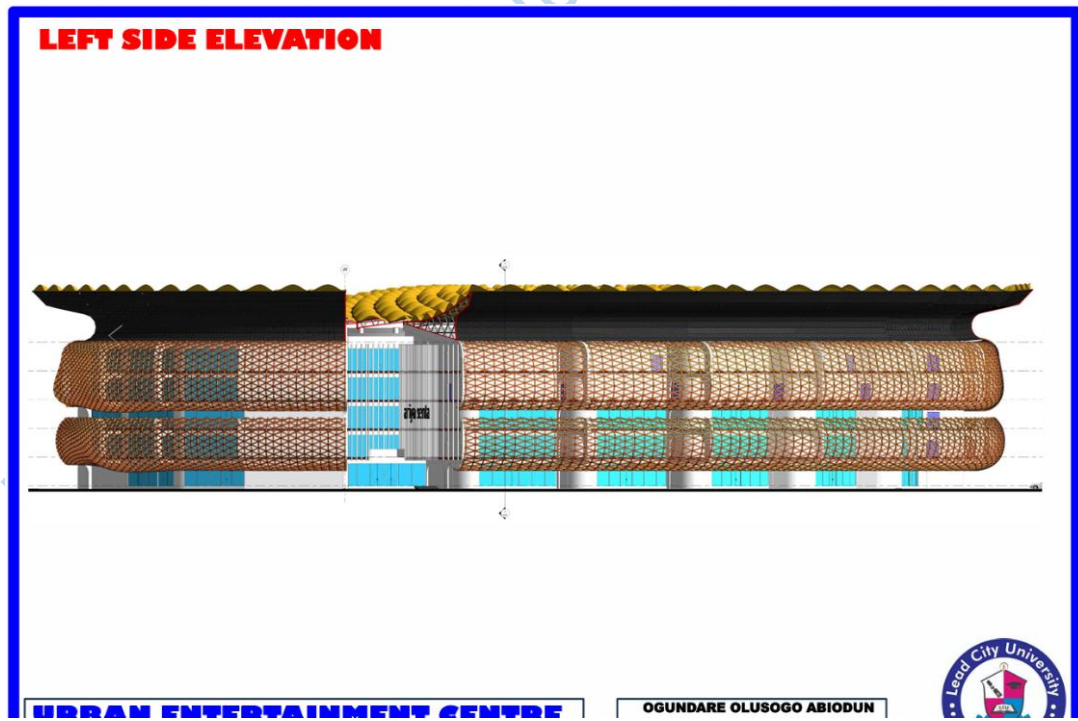
OGUNDARE OLUSOGO ABIODUN
LCU/PG/004069



Appendix 10.

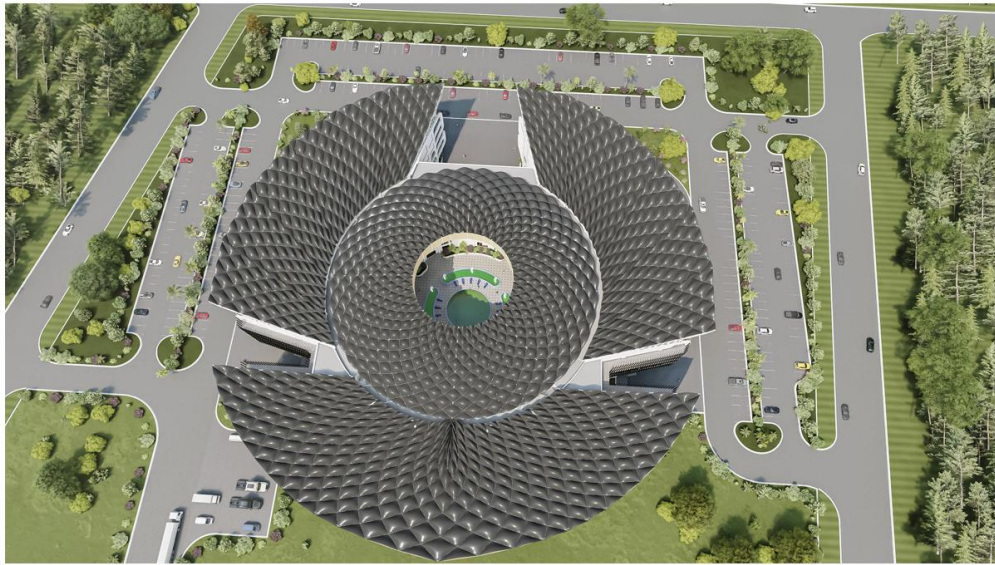


Appendix 11.



Appendix 12.

EXTERIOR PERSPECTIVES



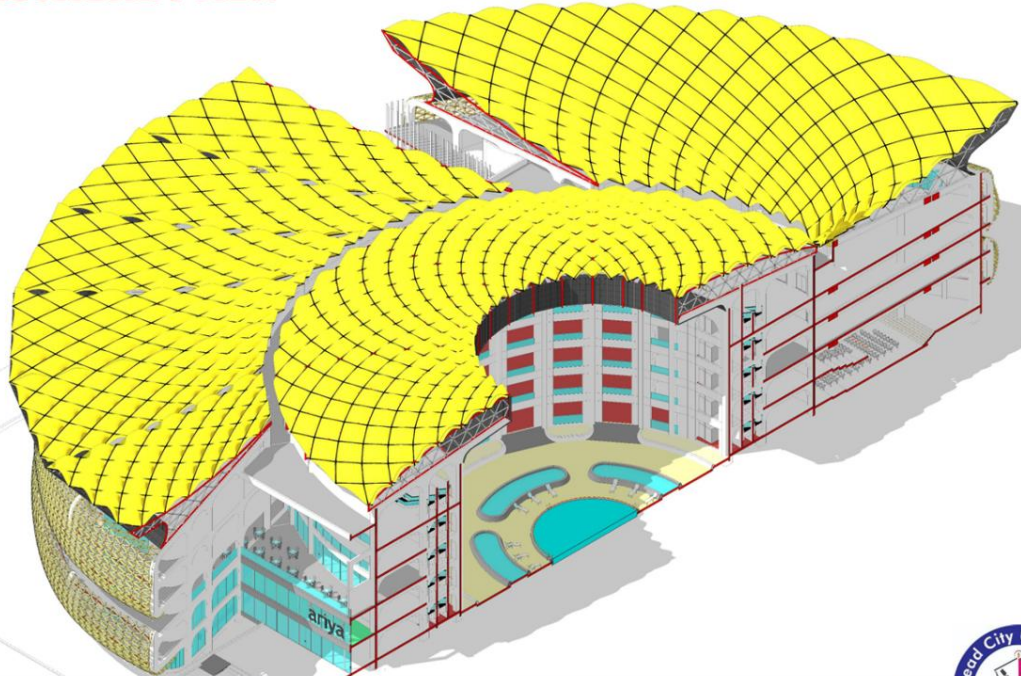
URBAN ENTERTAINMENT CENTRE

OGUNDARE OLUSOGO ABIODUN
LCU/PG/004069



Appendix 13

ISOMETRIC VIEW



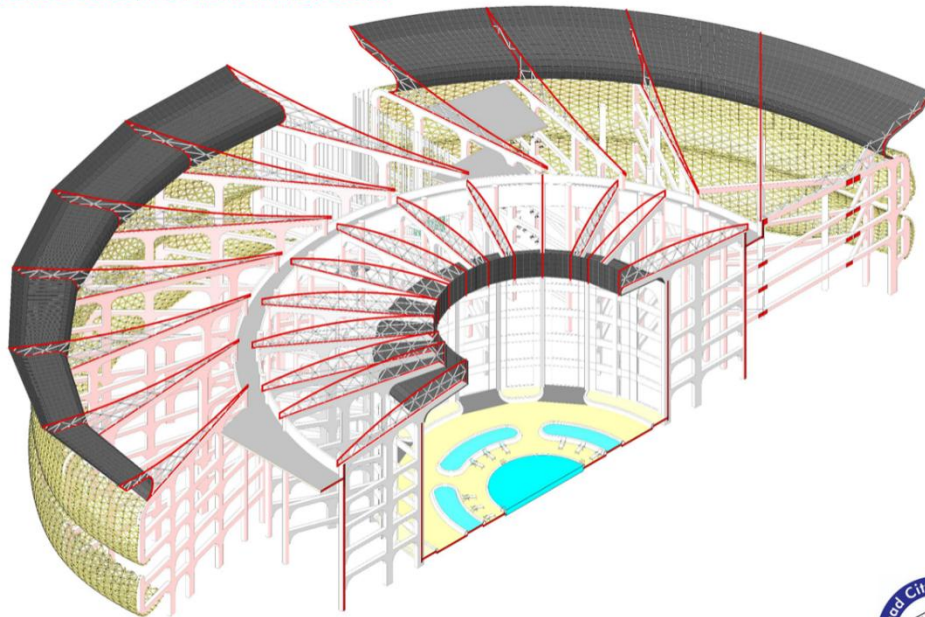
URBAN ENTERTAINMENT CENTRE

OGUNDARE OLUSOGO ABIODUN



Appendix 14.

STRUCTURAL APPROACH



URRAN ENTERTAINMENT CENTRE

OGUNDARE OLUSOGO ABIODUN



Appendix 15.

EXTERIOR PERSPECTIVES



Appendix 16.



Appendix 17.



Appendix 18

EXTERIOR PERSPECTIVES



URBAN ENTERTAINMENT CENTRE
OGOMBO, LAGOS STATE

OGUNDARE OLUSOGO ABIODUN
LCU/PG/004069
CRITIC: DR. ABO. OGUNTINDE



Appendix 19

EXTERIOR PERSPECTIVES



URBAN ENTERTAINMENT CENTRE

OGUNDARE OLUSOGO ABIODUN
LCU/PG/004069



Appendix 20

Biodata

A. Personal Data

1. Full Name: OGUNDARE Olusogo Abiodun
2. Date and place of birth: 16th September, 1982, Osun.
3. Nationality: Nigerian
4. State of Origin: Osun State
 - a). Senatorial District: Osun West
 - b). Local Government Area: Ola-Oluwa
5. Permanent Home Address: No 19, Area 6, Rd 602, New Haven Estate
Igbeyinadun Iba Ojo local government Area Lagos State.
6. Current Postal Address: No 19, Area 6, Rd 602, New Haven Estate
Igbeyinadun Iba Ojo local government Area Lagos State.
 - a) Phone Numbers: (+234) 8063088383, 08162118575
 - b) E-mail Address: olusogoabiodun@gmail.com,
7. Marital Status: Married
8. Number of Children and their ages: One

B. EDUCATIONAL BACKGROUND

1. Educational Institutions attended with dates:

- (i). D. C Primary School, Telemu Osun state, 1988– 1994.
- (ii). Ilupeju Community Grammar School, Ilemowu Osun State 1994 – 2001.
- (iii). United Methodist High School Iwo, Osun state 2001.
- (iv). Osun state College of Technology, Esa Oke, Osun State Nigeria: 2006 – 2012.
- (v). Bells University of Technology, Ota, Ogun State Nigeria: 2017 – 2019.

(vi). Lead City University, Ibadan, Oyo State, Nigeria: 2022 – 2024.

2. Academic Qualifications Obtained with dates:

- | | |
|---|------|
| (i). First Leaving School Certificate: | 1994 |
| (ii) National Examination Council (NECO) | 2008 |
| (iii) O.N.D Architecture: Distinction | 2010 |
| (iv) H.N.D Architecture Second Class Upper: | 2012 |
| (vi) B.Sc. Architecture Second Class Upper: | 2019 |
| (vii) M.Sc. Architecture | 2024 |

C. WORK EXPERIRNCE WITH DATES.

1. As an Industrial Trainee:

(i). Project Next, At Barrack bustop opposite Ibadan northeast Local govt Area Oyo state. 2007.

4month SIWES

(ii). Studio 3 Architects. No 50, Old Iyana-ipaja rd Iyana-ipaja Alimosho L.G.A Lagos state, 2009.

1year Industrial Attachment

3. As a Youth Corp Member:

(i). Enugu Capital Territory, Old park, Opara avenu, Enugu State 2013.

Design Architect, Velt Office and Site Supervision.

4. Post NYSC Experience:

(i). SKL International Construction Limited. At Bogije bustop, Ajah Lagos. 2014 - 2017

Roles: Architect, Designer, Site Supervision and construction

(ii). Project Solution Architect. No 110 Alimosho bustop, New Iyana-Ipaja road, Alimosho Local government Area, Lagos state. 2017 – Till date.

Principal Partner

Lead City University Ibadan DO NOT COPY

The University Compliance Certification

This is to certify that the Thesis by Ogundare Olusogo Abiodun with the matriculation number LCU/PG/004069 in the Department of Architecture, Faculty of Environmental Design and Management, Lead City

University, Ibadan is in full compliance with the University format and style of Thesis.




Signature

Date

Lead City University Ibadan DO NOT COPY

Lcu Library

Ogundare_Sogo LCU Library

-  Quick Submit
-  Quick Submit
-  Lead City University

Document Details

Submission ID
trn:oid::1:3037191781

Submission Date
Oct 10, 2024, 11:51 AM GMT+1

Download Date
Oct 10, 2024, 1:10 PM GMT+1

File Name
06_Ogundare_Sogo-1.docx

File Size
5.8 MB

82 Pages

18,168 Words

104,849 Characters





18% Overall Similarity

The combined total of all matches, including overlapping sources, for each database.




Filtered from the Report

- ▶ Bibliography
- ▶ Quoted Text
- ▶ Small Matches (less than 8 words)

Match Groups

-  **112** Not Cited or Quoted 15%
Matches with neither in-text citation nor quotation marks
-  **35** Missing Quotations 3%
Matches that are still very similar to source material
-  **0** Missing Citation 0%
Matches that have quotation marks, but no in-text citation
-  **0** Cited and Quoted 0%
Matches with in-text citation present, but no quotation marks

Top Sources

- 16%  Internet sources
- 4%  Publications
- 11%  Submitted works (Student Papers)

Integrity Flags

0 Integrity Flags for Review

No suspicious text manipulations found.

Our system's algorithms look deeply at a document for any inconsistencies that would set it apart from a normal submission. If we notice something strange, we flag it for you to review.

A Flag is not necessarily an indicator of a problem. However, we'd recommend you focus your attention there for further review.

Match Groups

- **112 Not Cited or Quoted 15%**
Matches with neither in-text citation nor quotation marks
- **35 Missing Quotations 3%**
Matches that are still very similar to source material
- **0 Missing Citation 0%**
Matches that have quotation marks, but no in-text citation
- **0 Cited and Quoted 0%**
Matches with in-text citation present, but no quotation marks

Top Sources

- 16% Internet sources
- 4% Publications
- 11% Submitted works (Student Papers)

Top Sources

The sources with the highest number of matches within the submission. Overlapping sources will not be displayed.

1	Internet		
	egyankosh.ac.in		4%
2	Internet		
	link.springer.com		2%
3	Internet		
	astoundinginteriors.co.uk		2%
4	Internet		
	fastercapital.com		2%
5	Internet		
	www.un.org		1%
6	Internet		
	fayllar.org		1%
7	Student papers		
	PES University		1%
8	Student papers		
	Landmark University		1%
9	Internet		
	www.aal-persona.org		1%
10	Student papers		
	Jose Rizal University		0%

11	Internet	www.coursehero.com	0%
12	Internet	afribrary.com	0%
13	Student papers	University of Colorado, Colorado Springs	0%
14	Student papers	Laureate Higher Education Group	0%
15	Internet	www.grossarchive.com	0%
16	Internet	kubanni-backend.abu.edu.ng	0%
17	Internet	en.wikipedia.org	0%
18	Internet	www.ncmedicaljournal.com	0%
19	Student papers	University of Northumbria at Newcastle	0%
20	Student papers	Cavite State University	0%
21	Student papers	Southern New Hampshire University - Continuing Education	0%
22	Student papers	De La Salle University	0%
23	Student papers	Southampton Solent University	0%
24	Student papers	AUT University	0%

25	Internet	ir.knust.edu.gh	0%
26	Student papers	American Intercontinental University Online	0%
27	Internet	www.terremadri.it	0%
28	Internet	gaspp.stakes.fi	0%
29	Publication	"The AI Revolution: Driving Business Innovation and Research", Springer Science ...	0%
30	Student papers	North Warwickshire & Hinckley College	0%
31	Student papers	UC, San Diego	0%
32	Student papers	Whalley Range High School	0%
33	Student papers	Institute of Art Design and Technology	0%
34	Student papers	University of Hertfordshire	0%
35	Internet	www.ejosdr.com	0%
36	Publication	Miller, Newton; Miller, Sarah; Allar, Ishonté. "How does educator look on me?", U...	0%
37	Internet	www.iscrr.com.au	0%
38	Internet	www.researchgate.net	0%

39	Publication	Neville A. Stanton, Kirsten M. A. Revell, Patrick Langdon. "Designing Interaction a...	0%
40	Internet	jobs.tribalcollegejournal.org	0%
41	Internet	www.townofchapelhill.org	0%
42	Internet	ww.iproject.com.ng	0%
43	Internet	www.projectsshelve.com	0%
44	Publication	Adeokun, Olasupo Johnson. "Exploring Relationship Between Entrepreneurial Co...	0%
45	Publication	Andrew Gouldson, Peter Roberts. "Integrating Environment and Economy - Strate...	0%
46	Internet	archive.saulibrary.edu.bd:8080	0%
47	Internet	epdf.pub	0%
48	Internet	hal.science	0%
49	Internet	prism.lib.asu.edu	0%
50	Internet	www.bexley.gov.uk	0%
51	Internet	www.bip.org.bd	0%
52	Internet	www.designforall.in	0%

53 Internet

www.hausarbeiten.de

0%